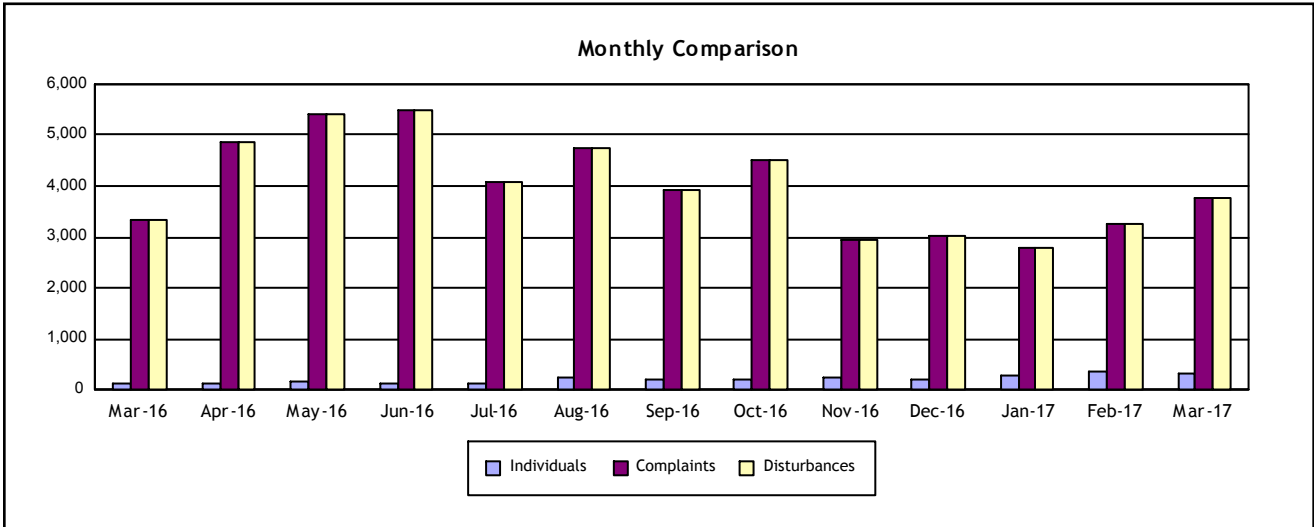


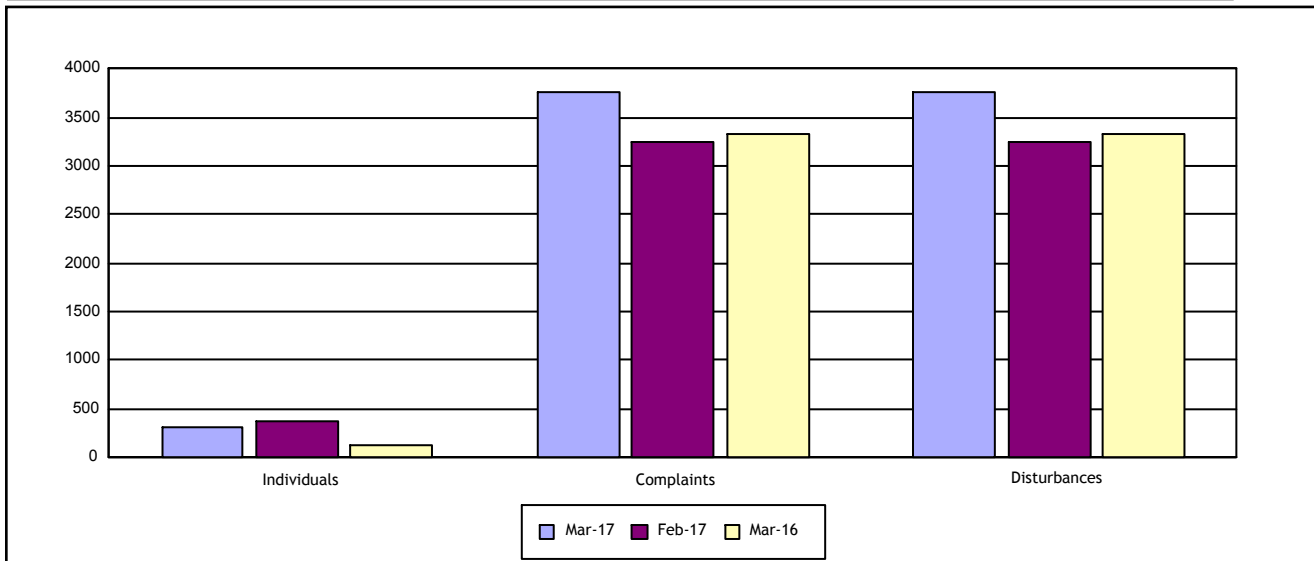
Individuals Submitting Noise Complaints **320**

Noise Complaints Received **3,758**

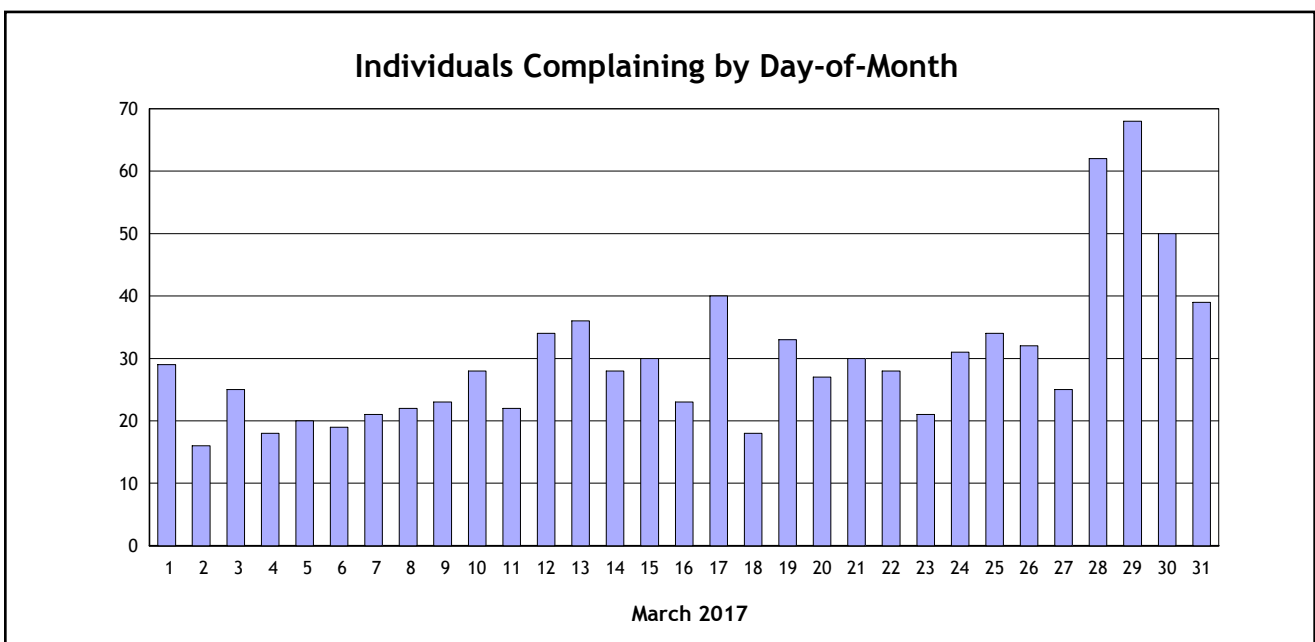
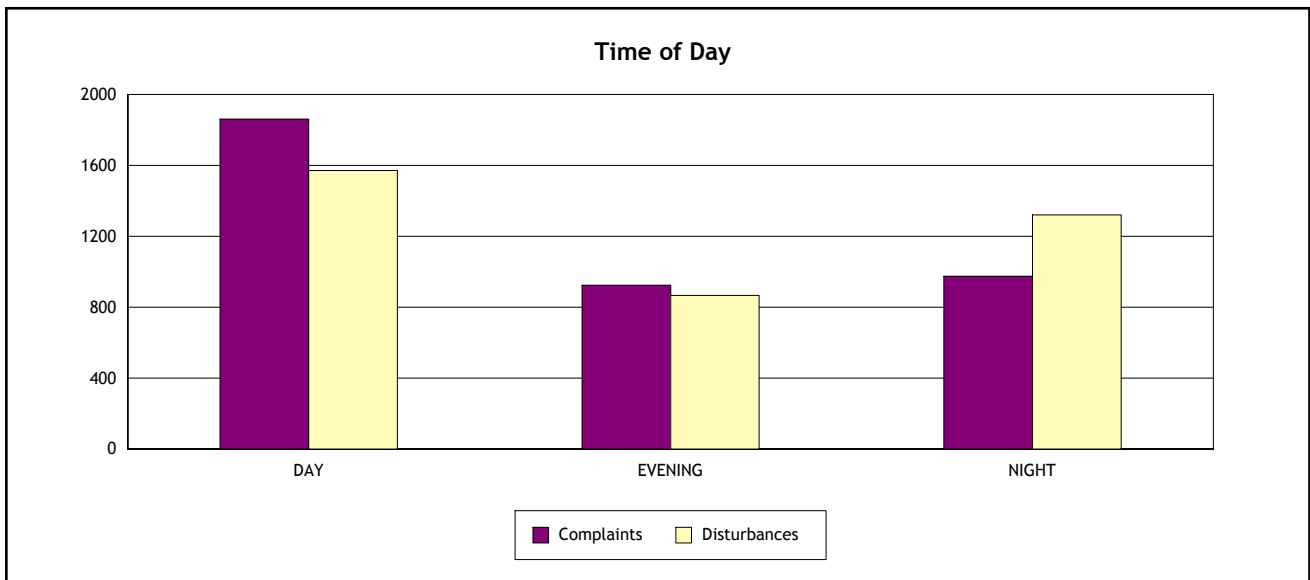
Noise Disturbances Reported **3,758**



	March 2017	February 2017	% Change	March 2016	% Change
Individuals	320	381	-16%	124	158%
Complaints	3,758	3,247	16%	3,323	13%
Disturbances	3,758	3,247	16%	3,323	13%



	Day (7:00 am - 7:00 pm)	Evening (7:00 pm - 10:00 pm)	Night (10:00 pm - 7:00 am)
Complaints	1,860	924	974
Disturbances	1,570	867	1,321

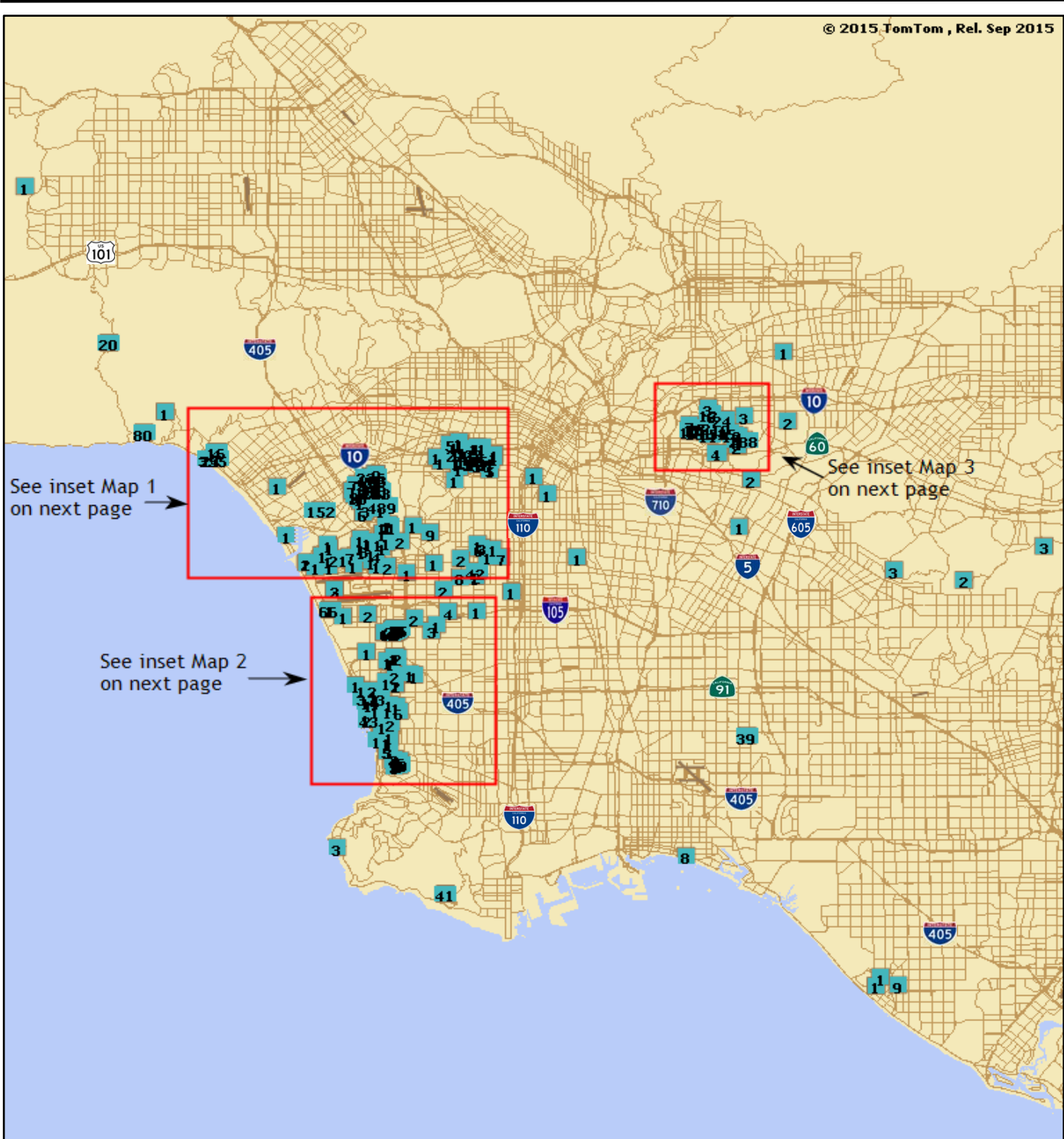




Aircraft Noise Community Response Report
Complaint Distribution by City and Complainant
 Los Angeles International Airport

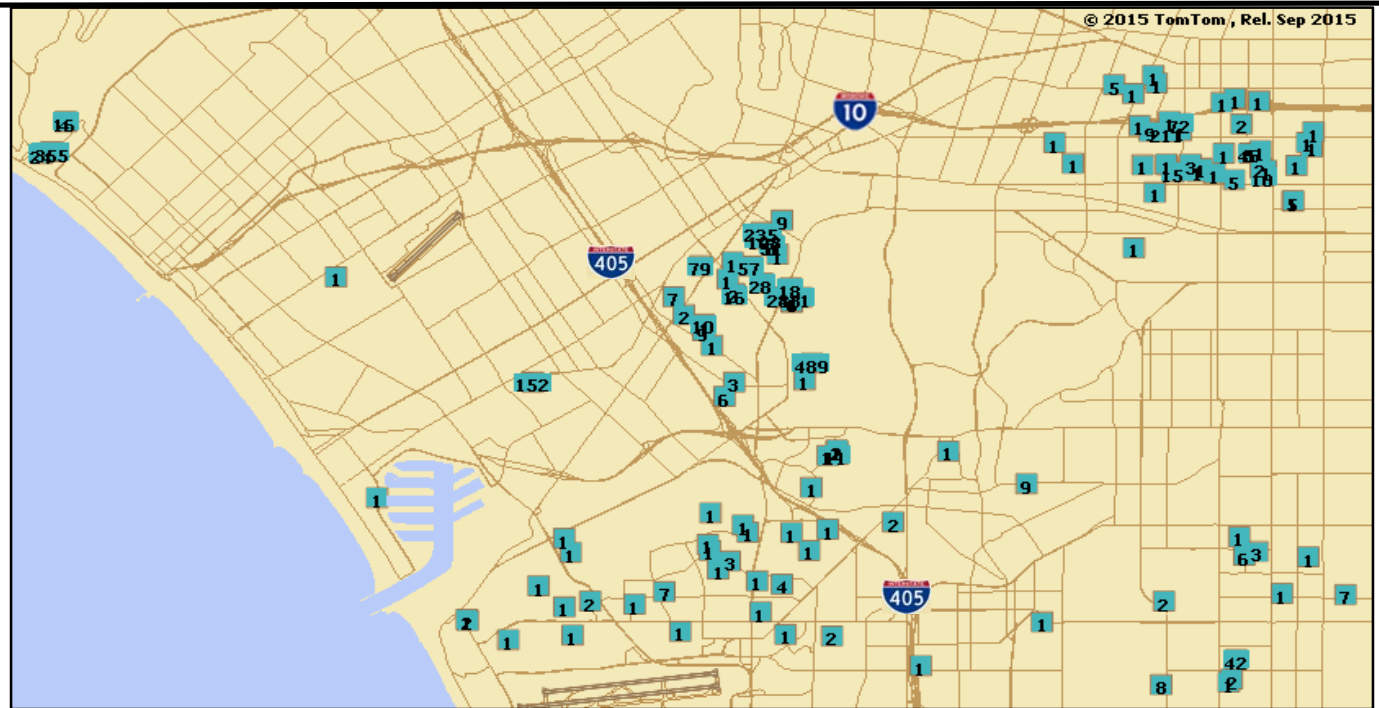
Period: March 2017

City	Individuals	Complaints	Percentage of Complaints**
Alhambra	1	3	< 1%
Chino Hills	1	1	< 1%
Culver City	33	1458	39%
El Segundo	4	70	2%
Hawthorne	81	168	4%
Hermosa Beach	13	62	2%
Huntington Beach	3	11	< 1%
Inglewood	8	29	< 1%
La Habra	1	2	< 1%
Laguna Niguel	1	2	< 1%
Lakewood	1	39	1%
Long Beach	1	8	< 1%
Los Angeles	79	679	18%
Manhattan Beach	6	7	< 1%
Marina Del Rey	1	1	< 1%
Montebello	3	4	< 1%
Monterey Park	31	518	14%
Ontario	1	1	< 1%
Pacific Palisades	2	81	2%
Palos Verdes Estates	1	3	< 1%
Playa Del Rey	4	5	< 1%
Playa Vista	2	2	< 1%
Rancho Palos Verdes	1	41	1%
Redondo Beach	23	55	1%
Rosemead	1	2	< 1%
Rowland Heights	1	3	< 1%
San Gabriel	1	1	< 1%
Santa Cruz	1	43	1%
Santa Monica	5	400	11%
Topanga	1	20	< 1%
Torrance	5	27	< 1%
Trabuco Canyon	1	8	< 1%
West Hills	1	1	< 1%
Whittier	1	3	< 1%
TOTAL	320	3758	0 10 20 30 40 50 60 70 80 90 100

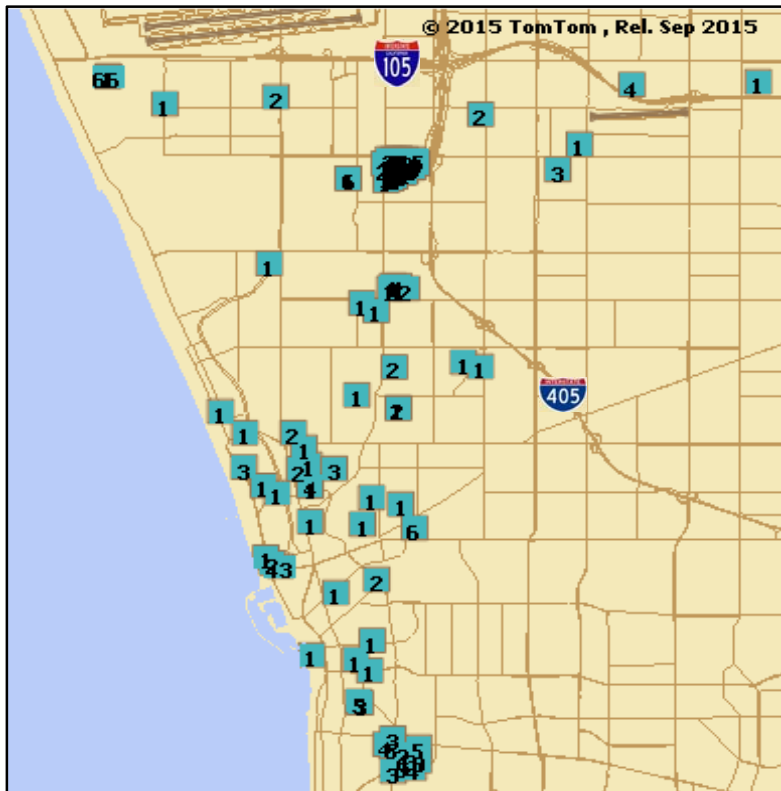


*Box indicates the location of complainant and the number within the box indicates number of complaints submitted

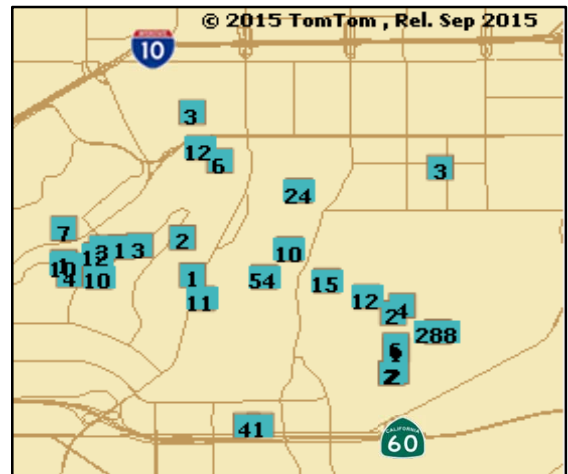
Note: Not included in map are complaints received from Chino Hills, Laguna Niguel, Ontario, Santa Cruz, and Trabuco Canyon, CA.



Map 1



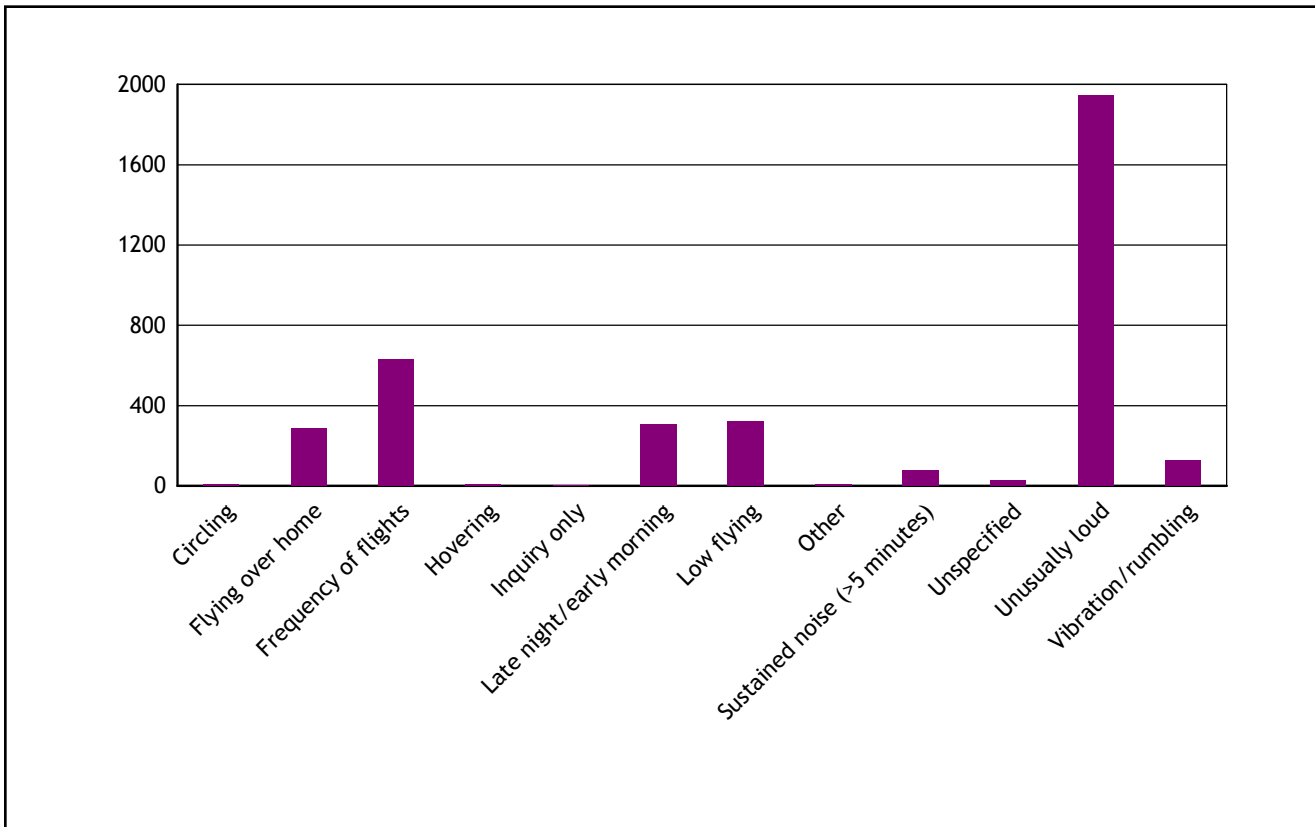
Map 2



Map 3

*Box indicates the location of complainant and the number within the box indicates number of complaints submitted

Type of Disturbance*	Number of Complaints
Circling	9
Flying over home	289
Frequency of flights	632
Hovering	10
Inquiry only	2
Late night/early morning	306
Low flying	320
Other	10
Sustained noise (>5 minutes)	78
Unspecified	28
Unusually loud	1944
Vibration/rumbling	130
TOTAL	3,758



Note: * As reported by complainant.



Aircraft Noise Community Response Report
Operations Receiving Two or More Complaints
Los Angeles International Airport

Period : March 2017

Date	Time	Operator/ Flight No.	Aircraft Type	Runway	Operation Detail	Complaint Count
03/04/2017	2:26:52	NCA101	B744	07R	East Departure during Over Ocean	3
03/09/2017	22:06:25	AAY339	A319	24R	Standard Arrival Operation	2
03/29/2017	3:12:11	FDX1876	B763	25L	Deviation from Over-Ocean Ops	2
03/29/2017	4:42:35	TSU1347	CVLT	25R	Standard Turboprop Departure	2

Note

AAY ALLEGiant AIR INC.
FDX FEDERAL EXPRESS CORPORATION
NCA NIPPON CARGO AIRLINES
TSU GULF & CARIBBEAN CARGO, INC.



Date	Start Time	End Time	Duration (hours:mins:secs)	Flow	Reason
3/1/2017	00:00:00	06:29:59	06:29:59	West Flow	Runway Closure (25L)
3/2/2017	00:00:00	06:29:59	06:29:59	West Flow	Metroplex Flight Testing
3/3/2017	00:00:00	01:44:59	01:44:59	West Flow	Volume
3/3/2017	01:45:00	04:11:59	02:26:59	East Flow	Metroplex Flight Testing
3/3/2017	04:12:00	06:29:59	02:17:59	West Flow	Metroplex Flight Testing
3/4/2017	00:00:00	00:17:59	00:17:59	West Flow	Volume
3/4/2017	06:28:00	06:29:59	00:01:59	West Flow	West Operations Transition
3/5/2017	00:00:00	03:59:59	03:59:59	West Flow	Runway Closure (24R)
3/6/2017	00:00:00	06:29:59	06:29:59	West Flow	Runway Closure (24R)
3/7/2017	00:00:00	06:29:59	06:29:59	West Flow	Runway Closure (24R)
3/8/2017	00:00:00	00:05:59	00:05:59	West Flow	Over Ocean Operations Transition
3/8/2017	06:05:00	06:29:59	00:24:59	West Flow	Unknown
3/9/2017	00:00:00	00:35:59	00:35:59	West Flow	Unknown
3/9/2017	06:19:00	06:29:59	00:10:59	West Flow	West Operations Transition
3/10/2017	00:00:00	00:04:59	00:04:59	West Flow	Over Ocean Operations Transition
3/10/2017	06:10:00	06:29:59	00:19:59	West Flow	SoCal TRACON Advised
3/11/2017	00:00:00	00:01:59	00:01:59	West Flow	Over Ocean Operations Transition
3/12/2017	00:00:00	06:29:59	06:29:59	West Flow	Weather
3/13/2017	00:00:00	06:29:59	06:29:59	West Flow	Low Ceilings and Visibility
3/14/2017	00:00:00	06:29:59	06:29:59	West Flow	Low Ceilings and Visibility
3/15/2017	00:00:00	06:29:59	06:29:59	West Flow	Low Ceilings and Visibility
3/16/2017	00:00:00	06:29:59	06:29:59	West Flow	Volume
3/17/2017	00:00:00	06:29:59	06:29:59	West Flow	Weather
3/18/2017	00:00:00	06:29:59	06:29:59	West Flow	Weather



Date	Start Time	End Time	Duration (hours:mins:secs)	Flow	Reason
3/19/2017	00:00:00	00:51:59	00:51:59	West Flow	Weather
3/19/2017	05:58:00	06:29:59	00:31:59	West Flow	Weather
3/20/2017	00:00:00	06:29:59	06:29:59	West Flow	FAA Flight Check and Runway Closure (25L)
3/21/2017	05:50:00	06:29:59	00:39:59	West Flow	Unknown
3/22/2017	00:00:00	06:29:59	06:29:59	West Flow	Weather
3/23/2017	00:00:00	06:29:59	06:29:59	West Flow	Runway Closure
3/24/2017	00:00:00	00:05:59	00:05:59	West Flow	Over Ocean Operations Transition
3/24/2017	06:13:00	06:29:59	00:16:59	West Flow	West Operations Transition
3/25/2017	00:00:00	04:44:59	04:44:59	West Flow	Winds
3/25/2017	06:14:00	06:29:59	00:15:59	West Flow	West Operations Transition
3/26/2017	00:00:00	01:09:59	01:09:59	West Flow	Winds
3/26/2017	06:05:00	06:29:59	00:24:59	West Flow	Unknown
3/27/2017	06:15:00	06:29:59	00:14:59	West Flow	West Operations Transition
3/28/2017	00:00:00	06:29:59	06:29:59	West Flow	Winds
3/29/2017	00:19:00	06:29:59	06:10:59	West Flow	Runway Closure
3/30/2017	00:00:00	00:09:59	00:09:59	West Flow	Over Ocean Operations Transition
3/30/2017	05:45:00	06:29:59	00:44:59	West Flow	Unknown
3/31/2017	00:00:00	00:11:59	00:11:59	West Flow	Over Ocean Operations Transition
3/31/2017	01:32:00	06:29:59	04:57:59	West Flow	Winds