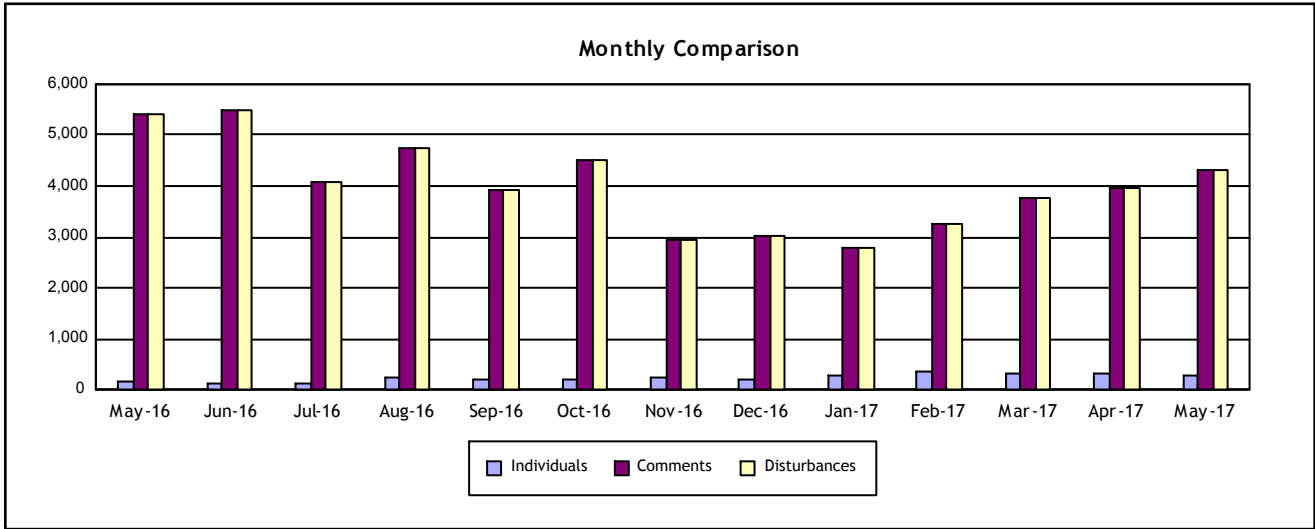


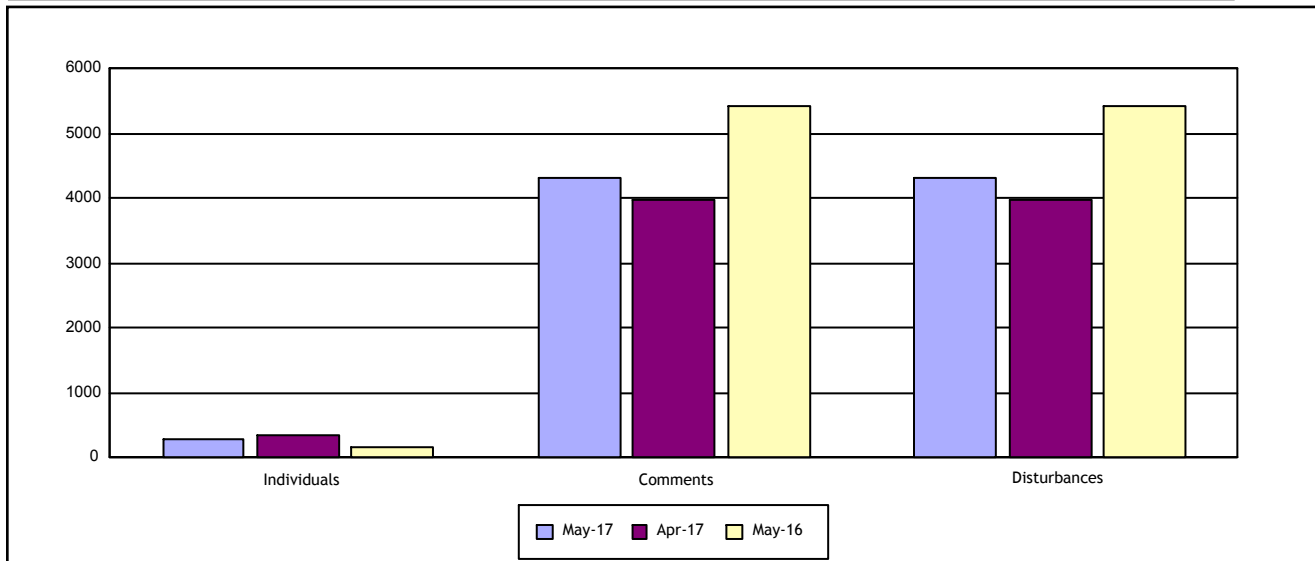
Individuals Submitting Noise Comments **285**

Noise Comments Received **4,307**

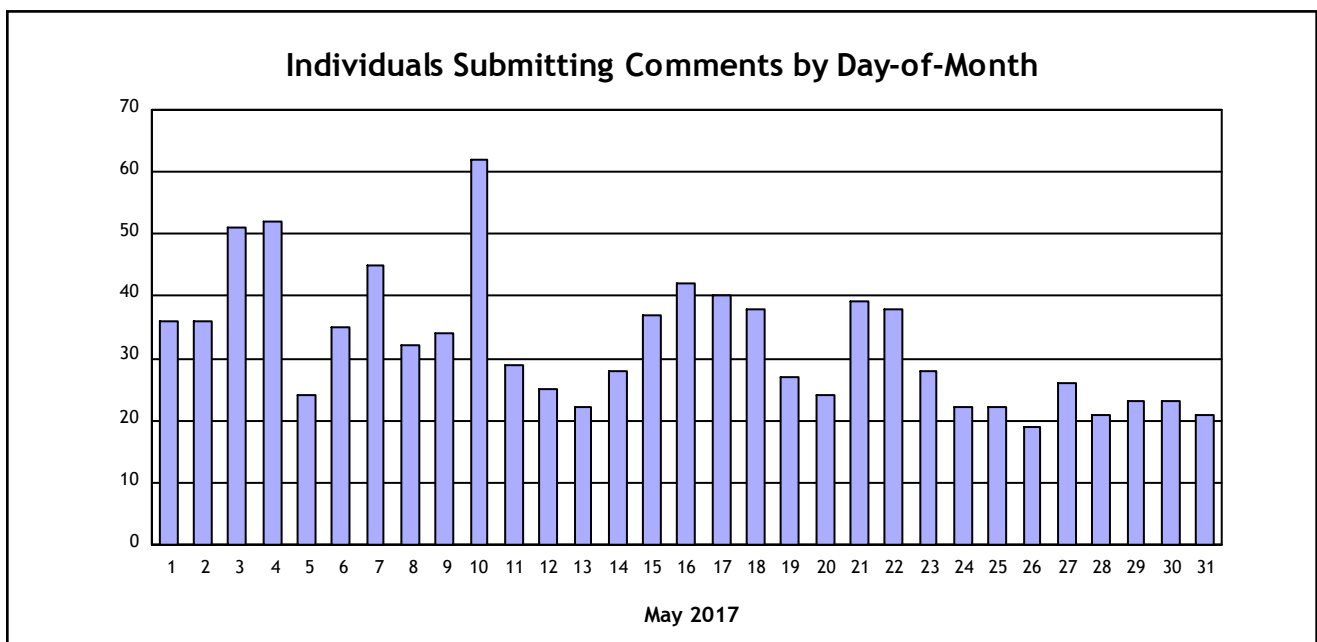
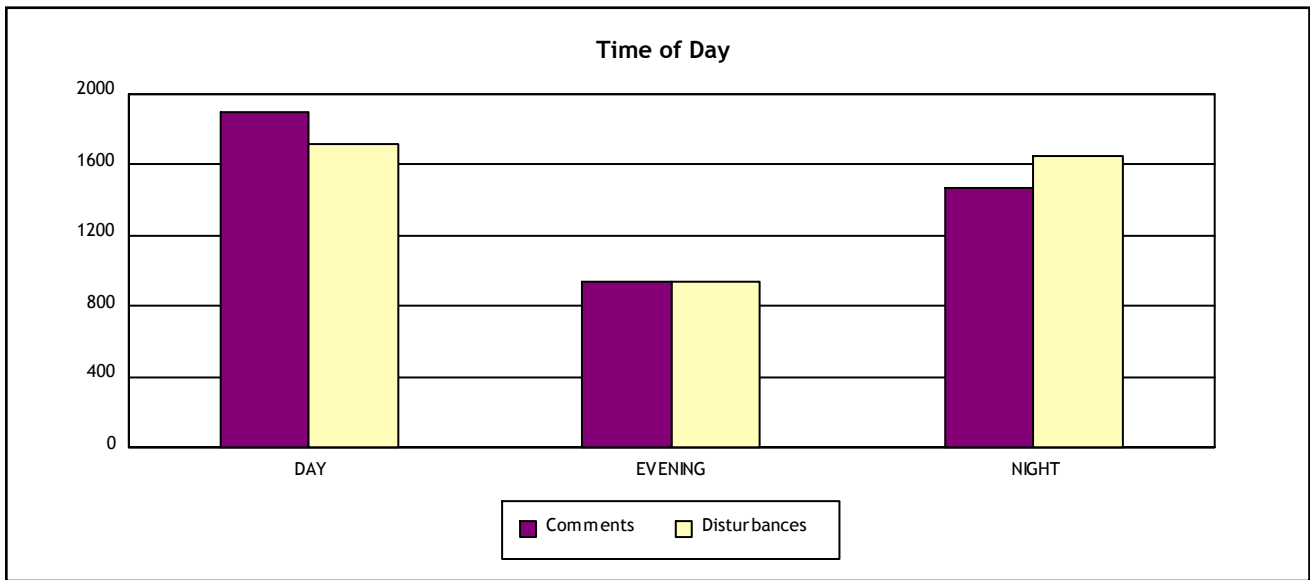
Noise Disturbances Reported **4,307**



	May 2017	April 2017	% Change	May 2016	% Change
Individuals	285	328	-13%	169	69%
Comments	4,307	3,979	8%	5,430	-21%
Disturbances	4,307	3,979	8%	5,430	-21%



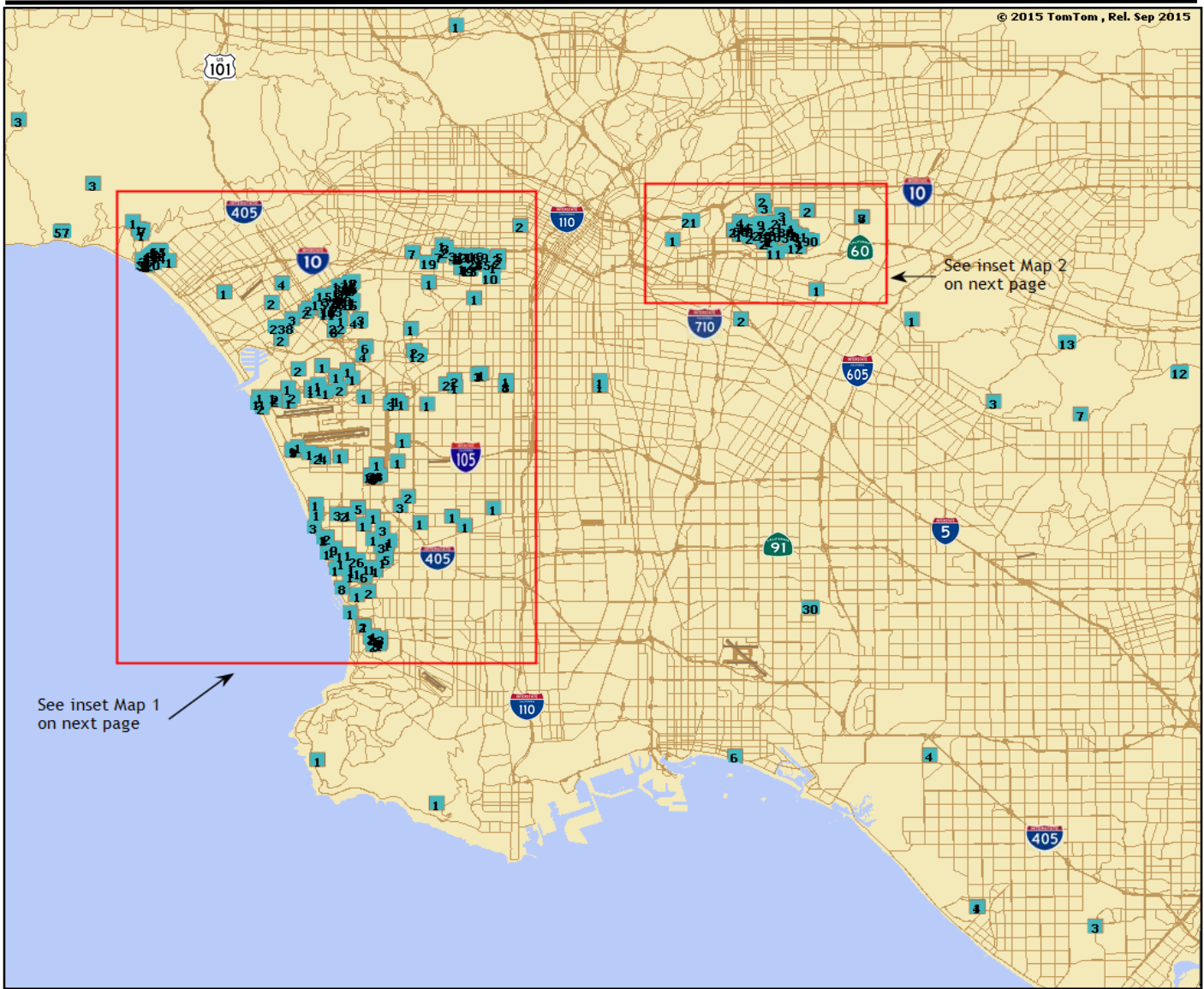
	Day (7:00 am - 7:00 pm)	Evening (7:00 pm - 10:00 pm)	Night (10:00 pm - 7:00 am)
Comments	1,896	940	1,471
Disturbances	1,721	939	1,647



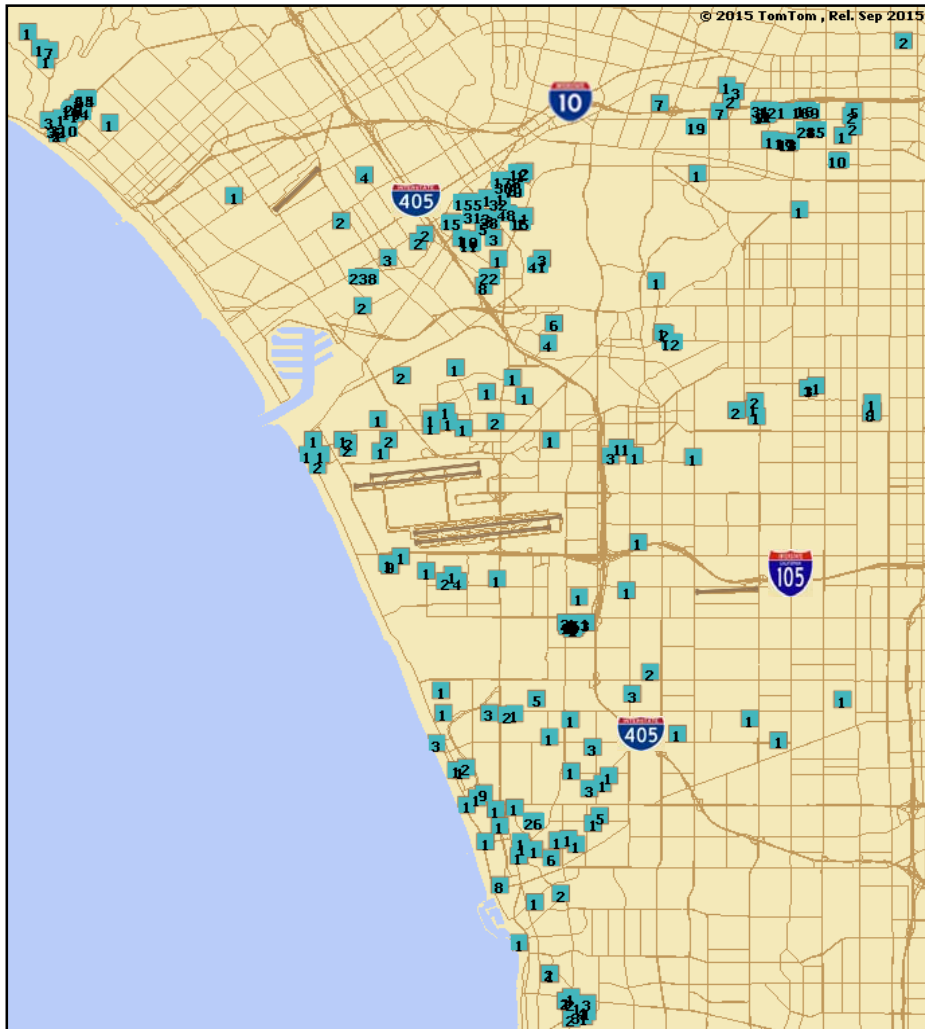
Period: May 2017

City	Individuals	Comments	Percentage of Comments*
Alhambra	1	2	< 1%
Burbank	1	1	< 1%
Commerce	1	2	< 1%
Costa Mesa	1	3	< 1%
Culver City	31	1020	24%
El Segundo	9	21	< 1%
Gardena	3	3	< 1%
Hacienda Heights	1	13	< 1%
Hawthorne	18	47	1%
Hermosa Beach	12	27	< 1%
Huntington Beach	2	5	< 1%
Inglewood	10	25	< 1%
La Habra	1	7	< 1%
Laguna Niguel	1	1	< 1%
Lakewood	1	30	< 1%
Lawndale	2	4	< 1%
Lennox	1	1	< 1%
Long Beach	1	6	< 1%
Los Angeles	65	883	21%
Manhattan Beach	11	21	< 1%
Montebello	1	1	< 1%
Monterey Park	38	1247	29%
Newbury Park	1	1	< 1%
Pacific Palisades	7	73	2%
Playa Del Rey	8	11	< 1%
Playa Vista	1	2	< 1%
Rancho Palos Verdes	2	2	< 1%
Redondo Beach	24	69	2%
Rosemead	2	15	< 1%
Rowland Heights	1	12	< 1%
Santa Cruz	1	4	< 1%
Santa Monica	16	698	16%
Thousand Oaks	1	27	< 1%
Topanga	1	3	< 1%
Torrance	5	12	< 1%
Westminster	1	4	< 1%
Whittier	2	4	< 1%
TOTAL	285	4307	0 10 20 30 40 50 60 70 80 90 100

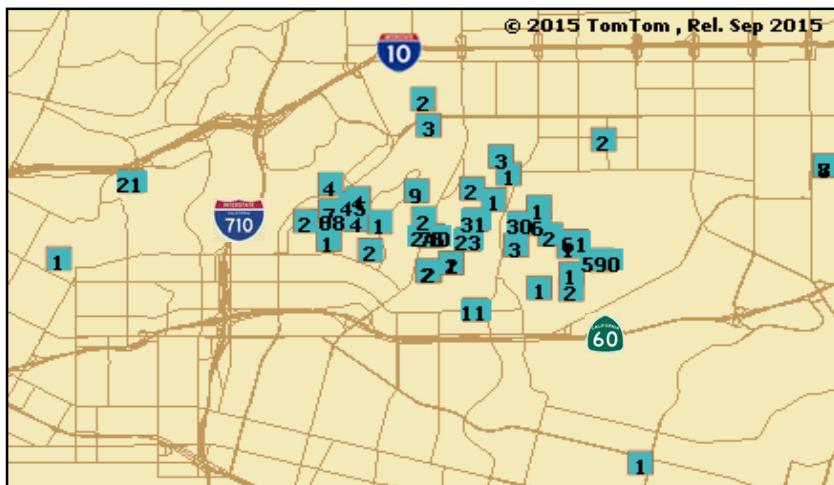
* All percentages are rounded to the nearest whole number.



*Box indicates the location of individual and the number within the box indicates number of comments submitted
 Note: Not included in map are comments received from Laguna Niguel, Newbury Park, Thousand Oaks, and Santa Cruz, CA.



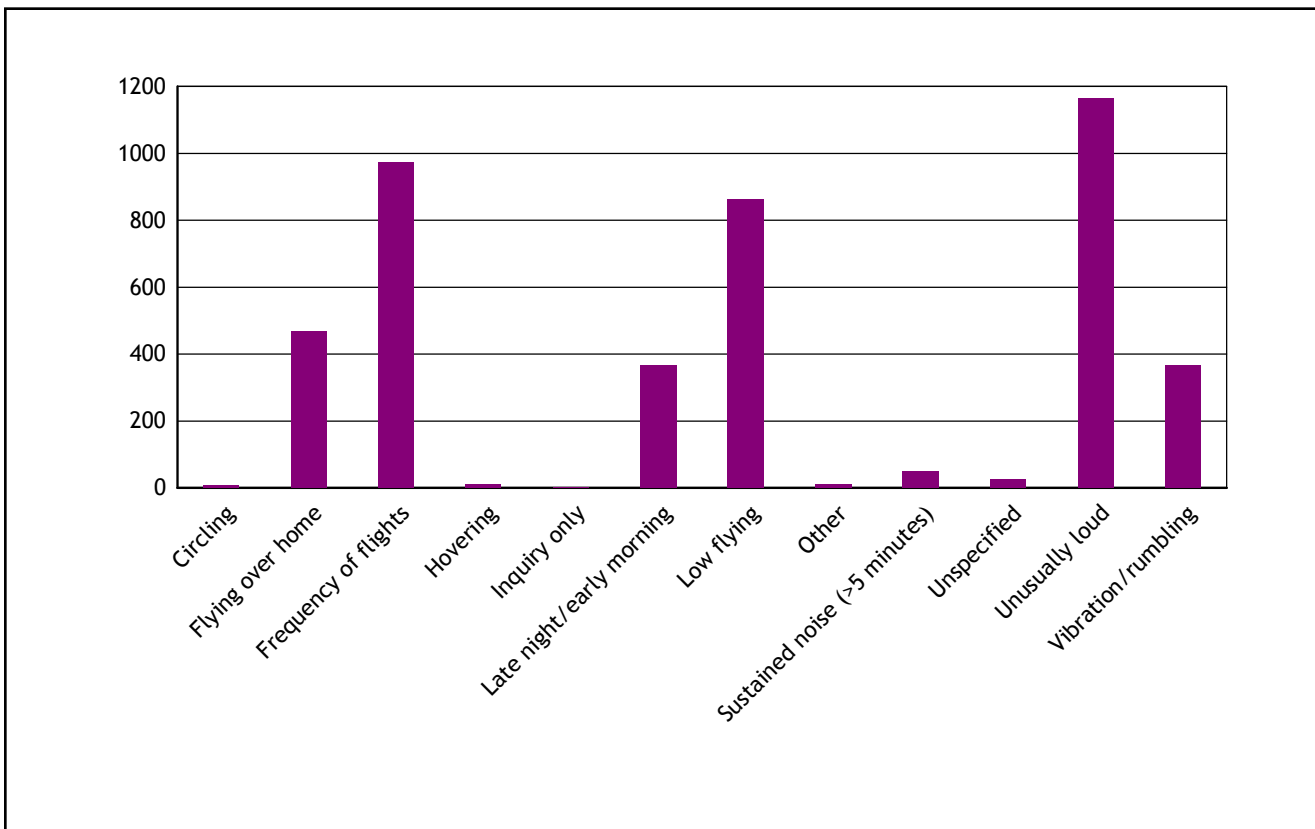
Map 1



Map 2

*Box indicates the location of the individual and the number within the box indicates number of comments submitted

<i>Type of Disturbance*</i>	<i>Number of Comments</i>
Circling	8
Flying over home	468
Frequency of flights	974
Hovering	11
Inquiry only	1
Late night/early morning	365
Low flying	862
Other	11
Sustained noise (>5 minutes)	49
Unspecified	27
Unusually loud	1164
Vibration/rumbling	367
TOTAL	4,307



Note: * As reported by individuals.



Date	Time	Operator/ Flight No.	Aircraft Type	Runway	Operation Detail	Comment Count
05/18/2017	2:13:38	AAL193	B77W	07R	East Departure during Over Ocean	13
05/10/2017	0:57:57	CPA883	B77W	07R	East Departure during Over Ocean	10
05/10/2017	1:00:20	AAR203	B744	07R	East Departure during Over Ocean	8
05/10/2017	0:56:16	VOZ8	B77W	07R	East Departure during Over Ocean	5
05/10/2017	0:39:10	CAL009	B77W	07R	East Departure during Over Ocean	4
05/19/2017	2:22:12	AAL193	B77W	07R	East Departure during Over Ocean	2

<u>Note</u>	
AAL	AMERICAN AIRLINES
AAR	ASIANA AIRLINES
CAL	CHINA AIRLINES
CPA	CATHAY PACIFIC AIRWAYS LTD
VOZ	VIRGIN AUSTRALIA



Date	Start Time	End Time	Duration (hours:mins:secs)	Flow	Reason
5/1/2017	00:00:00	06:29:59	06:29:59	West Flow	Runway Closures (25L and 25R)
5/2/2017	00:00:00	06:29:59	06:29:59	West Flow	Runway Closures (25L and 25R)
5/3/2017	00:00:00	06:29:59	06:29:59	West Flow	Multiple Runways Closed
5/4/2017	00:00:00	06:29:59	06:29:59	West Flow	Runway Closures (25L and 25R)
5/5/2017	00:00:00	06:29:59	06:29:59	West Flow	Weather
5/6/2017	00:00:00	06:29:59	06:29:59	West Flow	Low Ceilings
5/7/2017	00:00:00	03:46:59	03:46:59	West Flow	Unknown
5/7/2017	06:25:00	06:29:59	00:04:59	West Flow	West Operations Transition
5/8/2017	00:00:00	02:17:59	02:17:59	West Flow	Volume
5/8/2017	06:11:00	06:29:59	00:18:59	West Flow	Unknown
5/9/2017	00:00:00	00:53:59	00:53:59	West Flow	Wind
5/9/2017	06:07:00	06:29:59	00:22:59	West Flow	SoCal TRACON Advised
5/10/2017	00:00:00	00:37:59	00:37:59	West Flow	Unknown
5/10/2017	06:22:00	06:29:59	00:07:59	West Flow	West Operations Transition
5/11/2017	00:00:00	06:29:59	06:29:59	West Flow	Runway Closures (24L and 25R)
5/12/2017	00:00:00	06:29:59	06:29:59	West Flow	Low Ceilings and Volume
5/13/2017	06:14:00	06:29:59	00:15:59	West Flow	West Operations Transition
5/14/2017	06:20:00	06:29:59	00:09:59	West Flow	West Operations Transition
5/15/2017	00:00:00	06:29:59	06:29:59	West Flow	Runway Closures (25L and 25R)
5/16/2017	00:00:00	06:29:59	06:29:59	West Flow	Runway Construction
5/17/2017	00:00:00	06:29:59	06:29:59	West Flow	Runway Closures (25L and 25R)
5/18/2017	00:00:00	01:32:59	01:32:59	West Flow	Traffic
5/18/2017	06:15:00	06:29:59	00:14:59	West Flow	West Operations Transition
5/19/2017	00:00:00	00:19:59	00:19:59	West Flow	Volume



Date	Start Time	End Time	Duration (hours:mins:secs)	Flow	Reason
5/19/2017	06:07:00	06:29:59	00:22:59	West Flow	Unknown
5/20/2017	00:00:00	00:03:59	00:03:59	West Flow	SoCal TRACON
5/20/2017	06:22:00	06:29:59	00:07:59	West Flow	West Operations Transition
5/21/2017	00:00:00	01:54:59	01:54:59	West Flow	Due to Emergency Aircraft Inbound
5/21/2017	06:14:00	06:29:59	00:15:59	West Flow	West Operations Transition
5/22/2017	00:00:00	06:29:59	06:29:59	West Flow	Weather
5/23/2017	00:00:00	06:29:59	06:29:59	West Flow	Weather
5/24/2017	00:00:00	01:40:59	01:40:59	West Flow	Weather
5/24/2017	05:20:00	06:29:59	01:09:59	West Flow	Weather
5/25/2017	00:00:00	01:09:59	01:09:59	West Flow	Volume
5/25/2017	06:20:00	06:29:59	00:09:59	West Flow	West Operations Transition
5/26/2017	06:16:00	06:29:59	00:13:59	West Flow	West Operations Transition
5/27/2017	00:00:00	00:24:59	00:24:59	West Flow	Unknown
5/27/2017	06:10:00	06:29:59	00:19:59	West Flow	Unknown
5/28/2017	06:21:00	06:29:59	00:08:59	West Flow	West Operations Transition
5/29/2017	00:00:00	06:29:59	06:29:59	West Flow	Low Ceilings
5/30/2017	00:00:00	06:29:59	06:29:59	West Flow	Low Ceilings
5/31/2017	00:00:00	06:29:59	06:29:59	West Flow	Runway 25L Closed