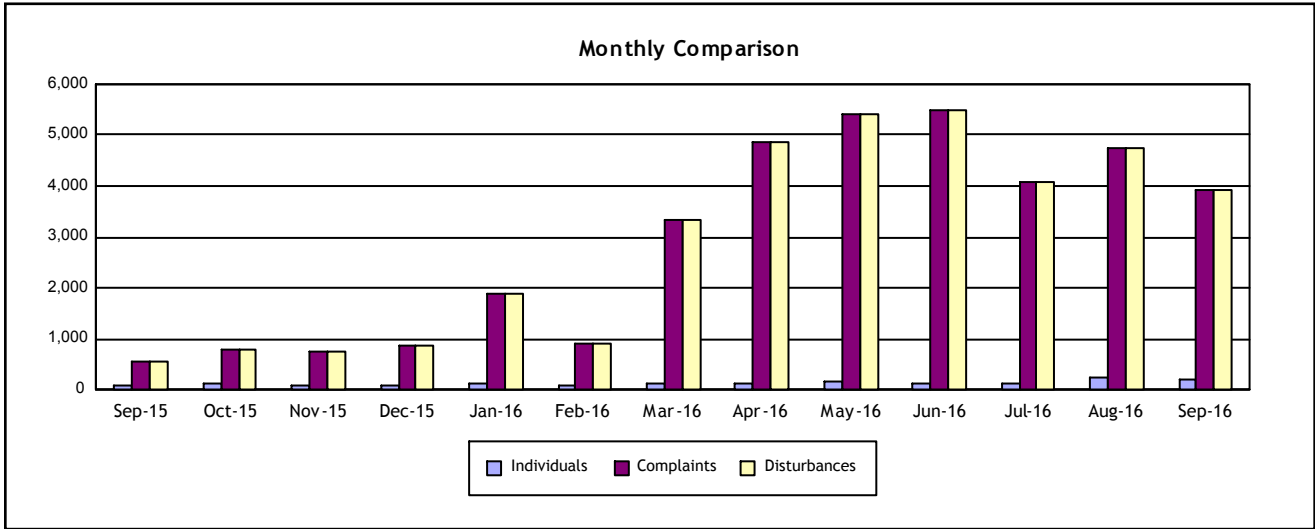


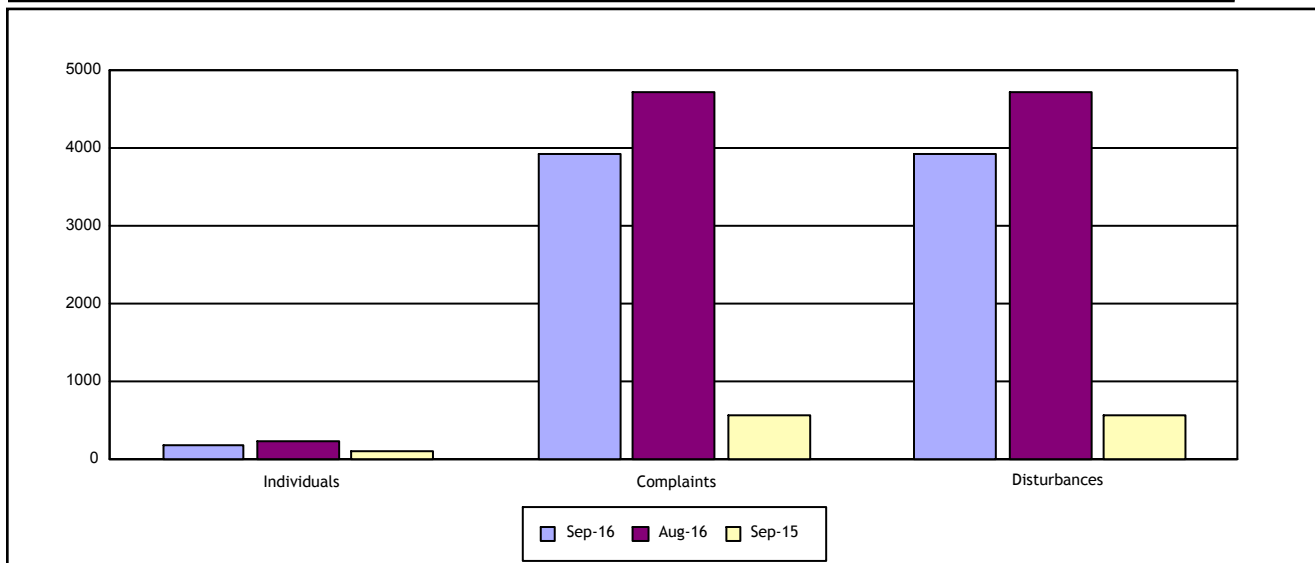
**Individuals Submitting Noise Complaints** **190**

**Noise Complaints Received** **3,923**

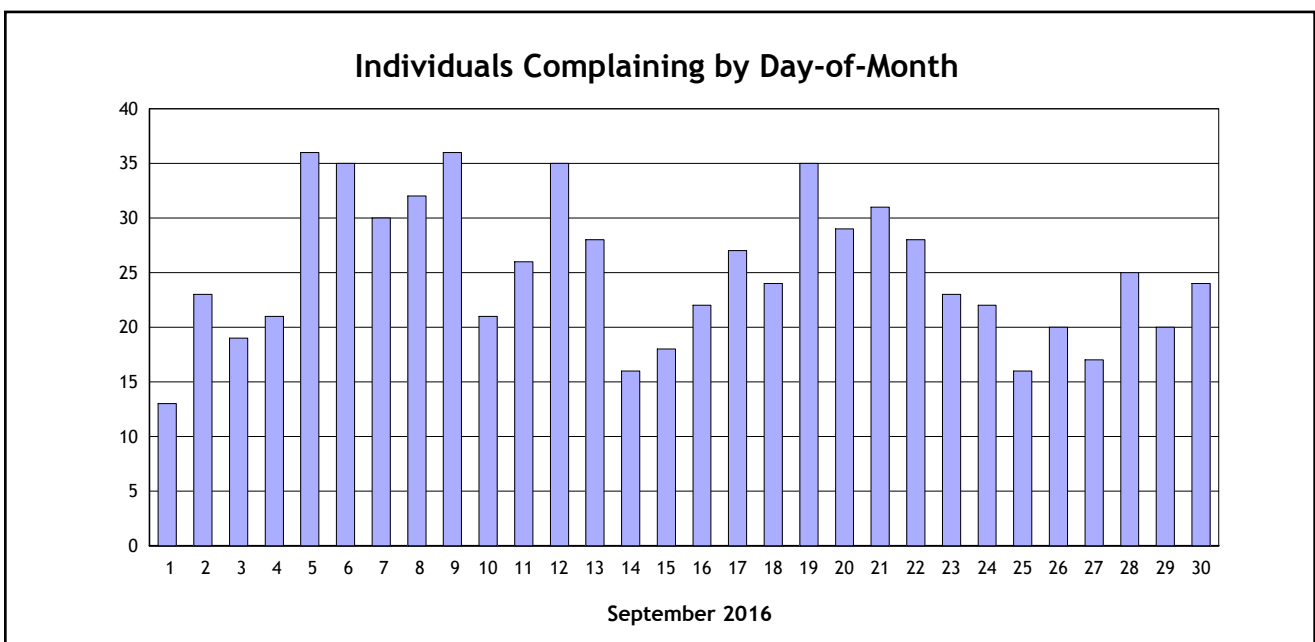
**Noise Disturbances Reported** **3,923**



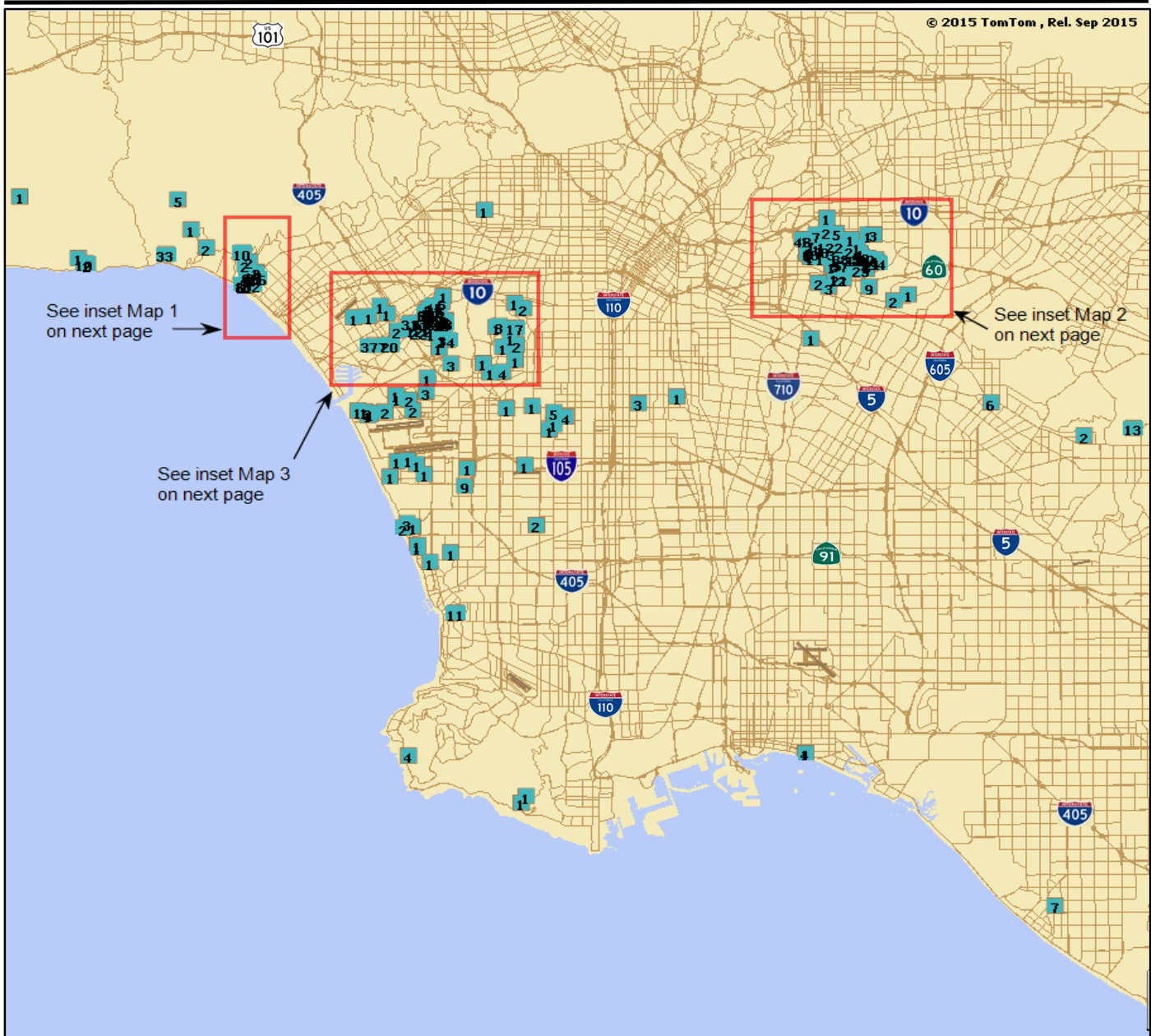
	September 2016	August 2016	% Change	September 2015	% Change
<b>Individuals</b>	190	227	-16%	101	88%
<b>Complaints</b>	3,923	4,734	-17%	557	604%
<b>Disturbances</b>	3,923	4,734	-17%	557	604%



	Day ( 7:00 am - 7:00 pm)	Evening (7:00 pm - 10:00 pm)	Night (10:00 pm - 7:00 am)
Complaints	1,888	1,026	1,009
Disturbances	1,814	1,051	1,058



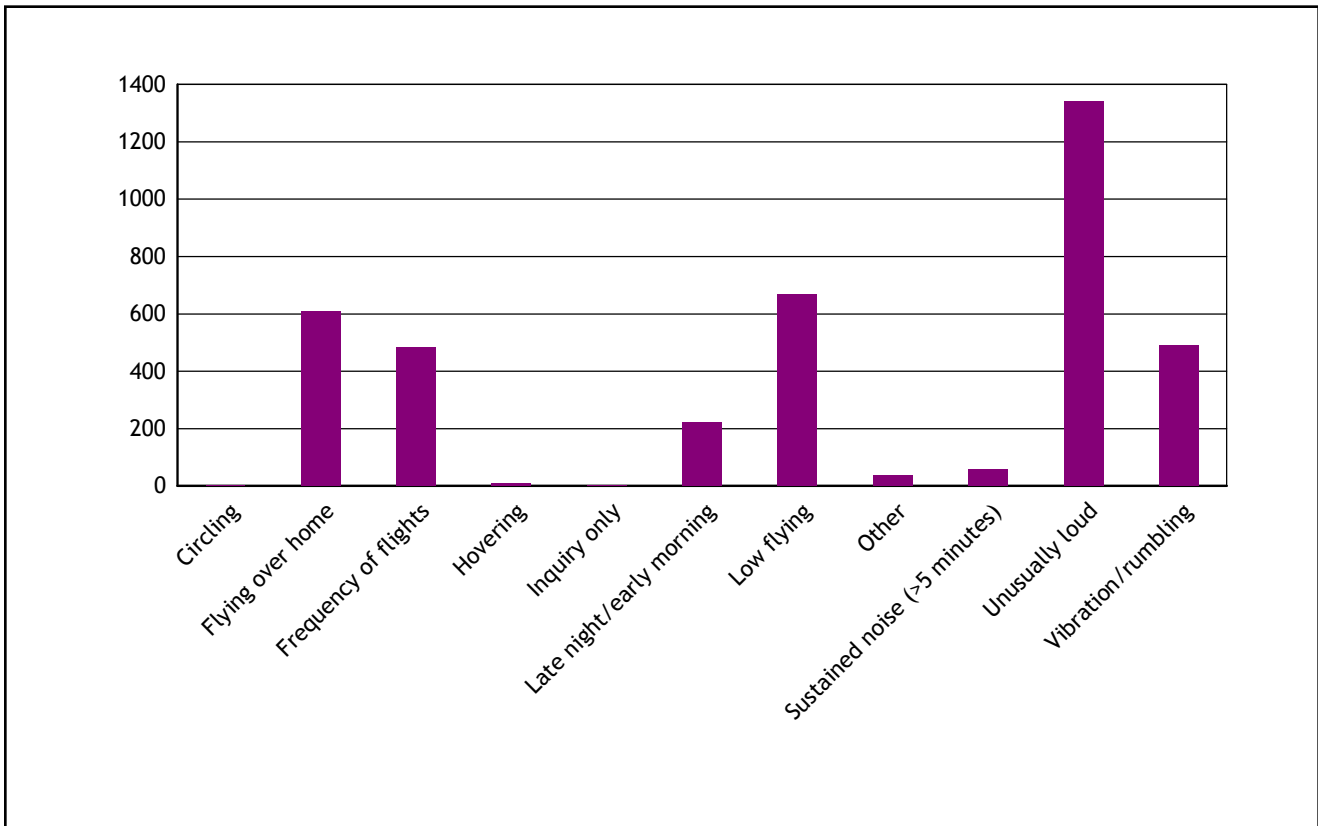
City	Individuals	Complaints	Percentage of Complaints**
Alhambra	2	3	< 1%
Crestline	1	2	< 1%
Culver City	37	1706	43%
El Segundo	6	14	< 1%
Gardena	1	2	< 1%
Hermosa Beach	1	1	< 1%
Huntington Beach	1	7	< 1%
Inglewood	9	16	< 1%
La Habra	1	13	< 1%
La Verne	1	1	< 1%
Long Beach	2	5	< 1%
Los Angeles	30	457	12%
Malibu	4	14	< 1%
Manhattan Beach	6	9	< 1%
Montebello	4	15	< 1%
Monterey Park	50	726	19%
Pacific Palisades	7	55	1%
Playa Del Rey	4	5	< 1%
Rancho Palos Verdes	3	6	< 1%
Redondo Beach	1	11	< 1%
San Gabriel	1	6	< 1%
Santa Cruz	1	14	< 1%
Santa Monica	13	825	21%
View Park-Windsor Hills	1	1	< 1%
Whittier	2	8	< 1%
Wildomar	1	1	< 1%
<b>TOTAL</b>	<b>190</b>	<b>3923</b>	0 10 20 30 40 50 60 70 80 90 100



\*Box indicates the location of complainant and the number within the box indicates number of complaints submitted  
Note: Not included in map are complaints received from Crestline, La Verne, Wildomar and Santa Cruz, CA.



Type of Disturbance*	Number of Complaints
Circling	3
Flying over home	609
Frequency of flights	485
Hovering	10
Inquiry only	1
Late night/early morning	222
Low flying	668
Other	36
Sustained noise (>5 minutes)	59
Unusually loud	1340
Vibration/rumbling	490
<b>TOTAL</b>	<b>3,923</b>



Note: \* As reported by complainant.



Aircraft Noise Community Response Report  
Operations Receiving Two or More Complaints  
Los Angeles International Airport

Period : September 2016

Date	Time	Operator/ Flight No.	Aircraft Type	Runway	Operation Detail	Complaint Count
09/01/2016	22:56:51	VRD060	A320	24R	Standard Arrival Operation	2
09/01/2016	23:08:29	HAL64	B763	24R	Standard Arrival Operation	2
09/04/2016	22:06:07	CPA880	B77W	24R	Standard Arrival Operation	2
09/12/2016	20:18:04	KAL213	B748	25L	Go-around Operation	2
09/17/2016	13:49:18	DAL1396	B752	25L	Go-around Operation	2
09/28/2016	2:40:03	EVA015	B77W	07R	East Departure during Over Ocean	2
09/30/2016	5:49:05	NCA110	B748	06L	Go-around Operation	2

<u>Note</u>	
CPA	CATHAY PACIFIC AIRWAYS LTD
DAL	DELTA AIRLINES
EVA	EVA AIRWAYS
HAL	HAWAIIAN AIRLINES
KAL	KOREAN AIRLINES
NCA	NIPPON CARGO AIRLINES
VRD	VIRGIN AMERICA INC.



Date	Start Time	End Time	Duration (hours:mins:secs)	Flow	Reason
9/1/2016	00:00:00	00:06:59	00:06:59	West Flow	Over Ocean Operations Transition
9/1/2016	06:22:00	06:29:59	00:07:59	West Flow	West Operations Transition
9/2/2016	00:00:00	00:07:59	00:07:59	West Flow	SoCal TRACON Decision
9/2/2016	06:15:00	06:29:59	00:14:59	West Flow	West Operations Transition
9/3/2016	06:27:00	06:29:59	00:02:59	West Flow	West Operations Transition
9/4/2016	00:00:00	06:29:59	06:29:59	West Flow	Unknown
9/5/2016	00:00:00	06:29:59	06:29:59	West Flow	SoCal TRACON Decision
9/6/2016	00:00:00	00:15:59	00:15:59	West Flow	SoCal TRACON Decision
9/6/2016	06:15:00	06:29:59	00:14:59	West Flow	West Operations Transition
9/9/2016	06:05:00	06:29:59	00:24:59	West Flow	NCA108 unable to accept Runway 6L for arrival due to tailwind (250 degrees at 6 knots)
9/10/2016	00:00:00	06:29:59	06:29:59	West Flow	Taxiway Closures
9/11/2016	06:29:00	06:29:59	00:00:59	West Flow	West Operations Transition
9/12/2016	00:00:00	01:00:59	01:00:59	West Flow	Volume
9/12/2016	06:11:00	06:29:59	00:18:59	West Flow	SoCal TRACON Decision
9/14/2016	00:00:00	00:11:59	00:11:59	West Flow	SoCal TRACON Decision
9/14/2016	06:19:00	06:29:59	00:10:59	West Flow	West Operations Transition
9/15/2016	06:23:00	06:29:59	00:06:59	West Flow	West Operations Transition
9/16/2016	00:00:00	00:03:59	00:03:59	West Flow	SoCal TRACON Decision
9/16/2016	06:23:00	06:29:59	00:06:59	West Flow	West Operations Transition
9/17/2016	00:00:00	06:29:59	06:29:59	West Flow	SoCal TRACON Decision
9/18/2016	00:00:00	06:29:59	06:29:59	West Flow	Construction
9/19/2016	00:00:00	06:29:59	06:29:59	West Flow	Unknown
9/20/2016	00:00:00	06:29:59	06:29:59	West Flow	RSA Project





Date	Start Time	End Time	Duration (hours:mins:secs)	Flow	Reason
9/21/2016	00:00:00	06:29:59	06:29:59	West Flow	RSA Project
9/22/2016	00:00:00	06:29:59	06:29:59	West Flow	RSA Project
9/24/2016	00:00:00	06:29:59	06:29:59	West Flow	Multiple Closures
9/25/2016	00:00:00	00:11:59	00:11:59	West Flow	Over Ocean Operations Transition
9/25/2016	06:19:00	06:29:59	00:10:59	West Flow	West Operations Transition
9/26/2016	06:27:00	06:29:59	00:02:59	West Flow	West Operations Transition
9/27/2016	00:00:00	00:02:59	00:02:59	West Flow	Over Ocean Operations Transition
9/27/2016	06:20:00	06:29:59	00:09:59	West Flow	West Operations Transition
9/28/2016	00:00:00	00:24:59	00:24:59	West Flow	Unknown
9/28/2016	06:24:00	06:29:59	00:05:59	West Flow	West Operations Transition
9/29/2016	00:00:00	01:51:59	01:51:59	West Flow	Flight Check
9/29/2016	06:25:00	06:29:59	00:04:59	West Flow	West Operations Transition
9/30/2016	00:00:00	04:19:59	04:19:59	West Flow	Runway Closure
9/30/2016	06:25:00	06:29:59	00:04:59	West Flow	West Operations Transition