



Los Angeles
World Airports
October 8, 2015

SoCal Metroplex EA
Federal Aviation Administration
Western Service Center – Operations Support Group
1601 Lind Avenue SW
Renton, WA 98057

Re: Draft Environmental Assessment (EA) FAA's Proposed Southern California
Optimization of Airspace and Procedures in the Metroplex (SoCal Metroplex)
Project

LAX

LA/Ontario

Van Nuys

City of Los Angeles

Eric Garcetti
Mayor

Board of Airport
Commissioners

Sean O. Burton
President

Valeria C. Velasco
Vice President

Jeffery J. Daar
Gabriel L. Eshaghian
Beatrice C. Hsu
Nolan V. Rollins
Dr. Cynthia A. Telles

Deborah Flint
Executive Director

Dear Sir or Madam:

Los Angeles World Airports (LAWA) would like to thank the Federal Aviation Administration (FAA) for further extending the public review and comment period for the Southern California Metroplex Draft Environmental Assessment (EA) to October 8, 2015. This additional time provided LAWA an opportunity to review the additional supplemental materials that were made available by the FAA after the release of the EA and up through August 31, 2015. Of note were the additional data FAA provided in Google Earth "kml" files, including all of the no-action and proposed project procedures and flight tracks, as well as the noise grid data for each of the affected counties.

In an effort to understand the additional information provided, LAWA's noise staff and consultant team created a geodatabase using the FAA-provided data. The geodatabase compares existing condition noise levels for Los Angeles, Orange, Ventura, Riverside and San Bernardino Counties with what LAWA understands are the changes the FAA estimates would occur if the proposed Southern California Metroplex Project were implemented for 2020. The two maps included with this comment letter were produced using this geodatabase. LAWA did not rerun, confirm or adjust the underlying noise and flight track data that FAA provided.

LAWA requests the FAA run the same type of geodatabase comparison and provide the results of that effort to the public in a manner which will be easily understandable and accessible via the internet, including in the Final EA. To facilitate this effort, we have included copies of the maps created from the comparison and a link to the geodatabase which was used to create the maps:

<https://lawa.box.com/s/zueyo0ny1gmw8fddia8imesunxgnuk0o>

LAWA requests that the FAA verify the geographic visualization of the data we have presented, including LAWA's geodatabase, and generate this type of change in noise level map layer in Google Earth.

LAWA also suggests that the FAA present this noise level information in a similar manner as we have shown on this map in the Final EA for the SoCal Metroplex. This will facilitate a clear understanding of the projected changes in noise levels within the project area. LAWA recognizes that FAA's analysis in the Draft EA reports no significant or reportable noise level increases from the proposed Project. However, the analysis




described above identified noise level increases as high as 9.0 dB DNL in certain areas that are currently below 45 DNL. As stated in earlier submitted comments, LAWA is keenly aware that some communities may experience changes in the frequency and location of aircraft overflights upon Project implementation.

LAWA believes that enhanced communication between FAA and potentially affected communities in the SoCal Metroplex area is vital. Accordingly, LAWA looks forward to working with FAA on future public outreach efforts with our local communities, surrounding jurisdictions and elected officials in the interest of supporting transparency, facilitating the understanding of complex aviation, and assisting with the modernization of the National Airspace System.

Should you have additional questions or concerns, please feel free to contact me or Cynthia Guidry, LAWA Deputy Director of Capital Programming, Planning, and Engineering Group at (424) 646-7690.

Sincerely,

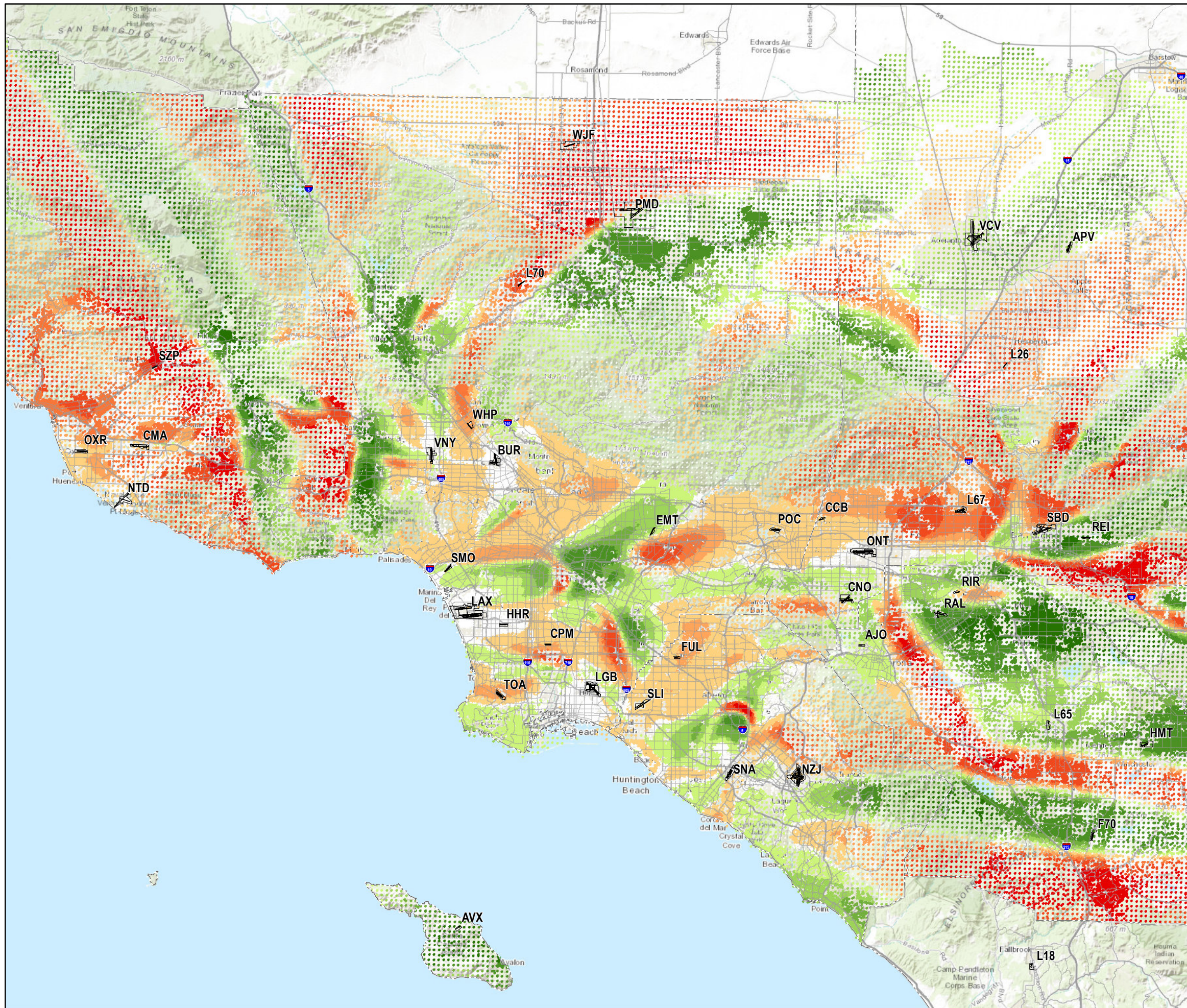


Deborah Flint

DAF:SMT:LT

Enclosures

cc: Glenn Martin, FAA
Ryan Weller, FAA
Cynthia Guidry, LAWA
Lisa Trifiletti, LAWA
Suzanne Tracy, LAWA
Mark Adams, LAWA
Scott Tatro, LAWA



Southern California Metroplex Project

Estimated Changes in DNL at Census Block Centroids and 0.5 Nautical Mile Grid Points with Implementation of the Proposed Action in 2020 As reported in the "Supplemental Materials, Google Earth" section of the SoCal Metroplex EA website

Change in dB DNL

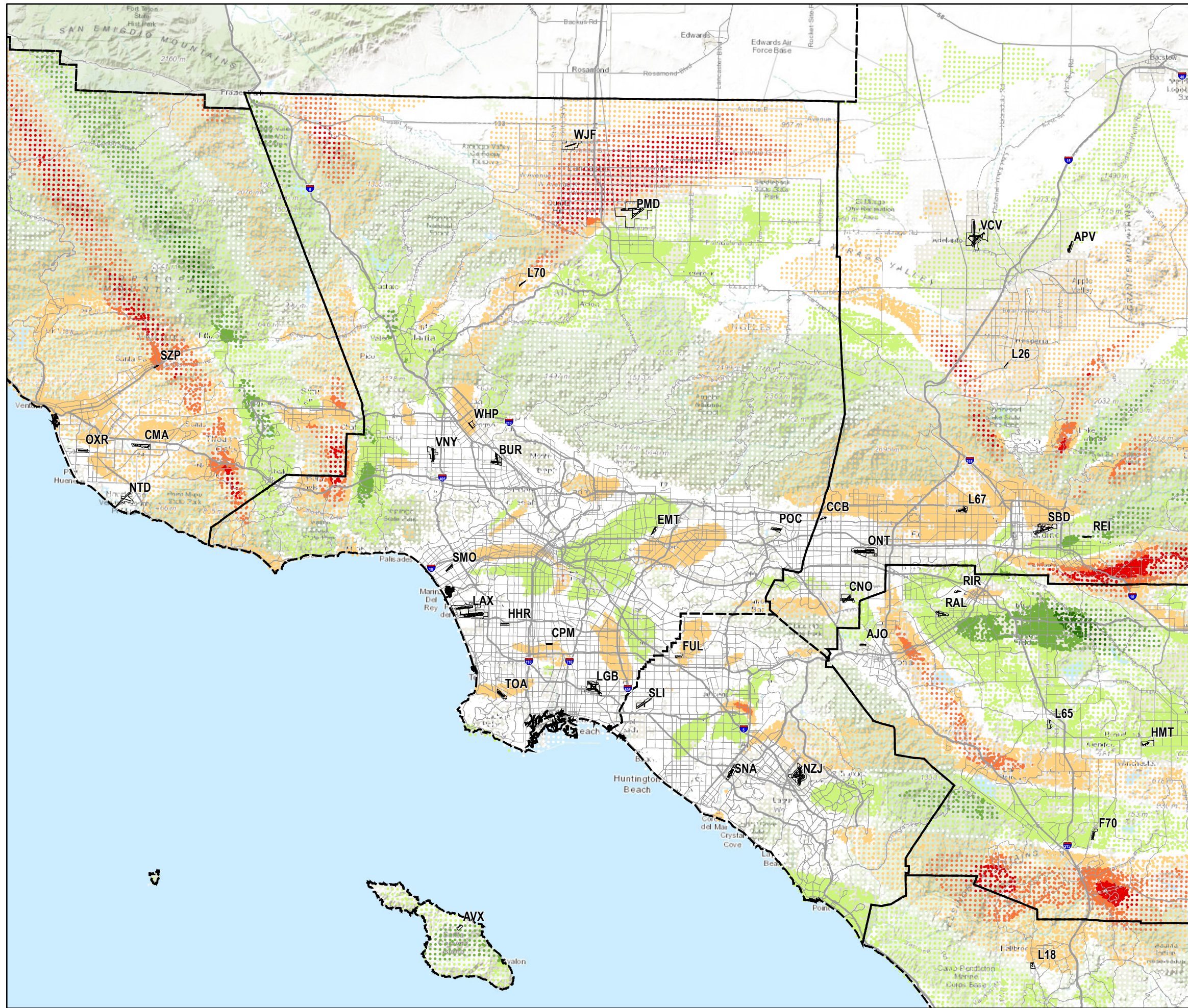
- ≥ 3.0
- 1.5 - 2.9
- 1.0 - 1.4
- 0.5 - 0.9
- 0.1 - 0.4
- 0.0
- -0.1 - -0.4
- -0.5 - -0.9
- -1.0 - -1.4
- -1.5 - -2.9
- ≤ -3.0

--- County Boundary

Service Layer Credits: Sources: Esri, HERE, DeLorme, TomTom, Intermap, increment P Corp., GEBCO, USGS, FAO, NPS, NRCAN, GeoBase, IGN, Kadaster NL, Ordnance Survey, Esri Japan, METI, Esri China (Hong Kong), swisstopo, MapmyIndia, © OpenStreetMap contributors, and the GIS User Community

http://www.metroplexenvironmental.com/socal_metroplex/socal_docs.html





Southern California Metroplex Project

Estimated Changes in DNL at Census Block Centroids and 0.5 Nautical Mile Grid Points with Implementation of the Proposed Action in 2020 As reported in the "Supplemental Materials, Google Earth" section of the SoCal Metroplex EA website

Change in dB DNL

- 5.0 to 9.0
- 3.0 to 4.9
- 0.5 to 2.9
- -0.4 to 0.4
- -0.5 to -2.9
- -3.0 to -4.9
- -5.0 to -6.9

--- County Boundary

Service Layer Credits: Sources: Esri, HERE, DeLorme, TomTom, Intermap, increment P Corp., GEBCO, USGS, FAO, NPS, NRCAN, GeoBase, IGN, Kadaster NL, Ordnance Survey, Esri Japan, METI, Esri China (Hong Kong), swisstopo, MapmyIndia, © OpenStreetMap contributors, and the GIS User Community

http://www.metroplexenvironmental.com/socal_metroplex/socal_docs.html

