



LAX

Los Angeles World Airports

Welcome!

Los Angeles International Airport
FAR Part 150 Noise Exposure Map Report Update

Public Information Workshop #2

May 2015



Los Angeles International Airport FAR Part 150 Noise Exposure Map Report Update

Noise Modeling Assumptions

- **Existing (2015) Conditions Noise Exposure Map**
 - **Based on 2013 annual operations – 614,917**
 - **Aircraft fleet mix based on Airport Noise and Operations Management System (ANOMS) data for Calendar Year (CY) 2013**
 - **Runway use based on ANOMS data for CY 2013**
 - **Time of day based on ANOMS data for CY 2013**
 - **Flight tracks and flight track usage based on ANOMS data for CY 2013**

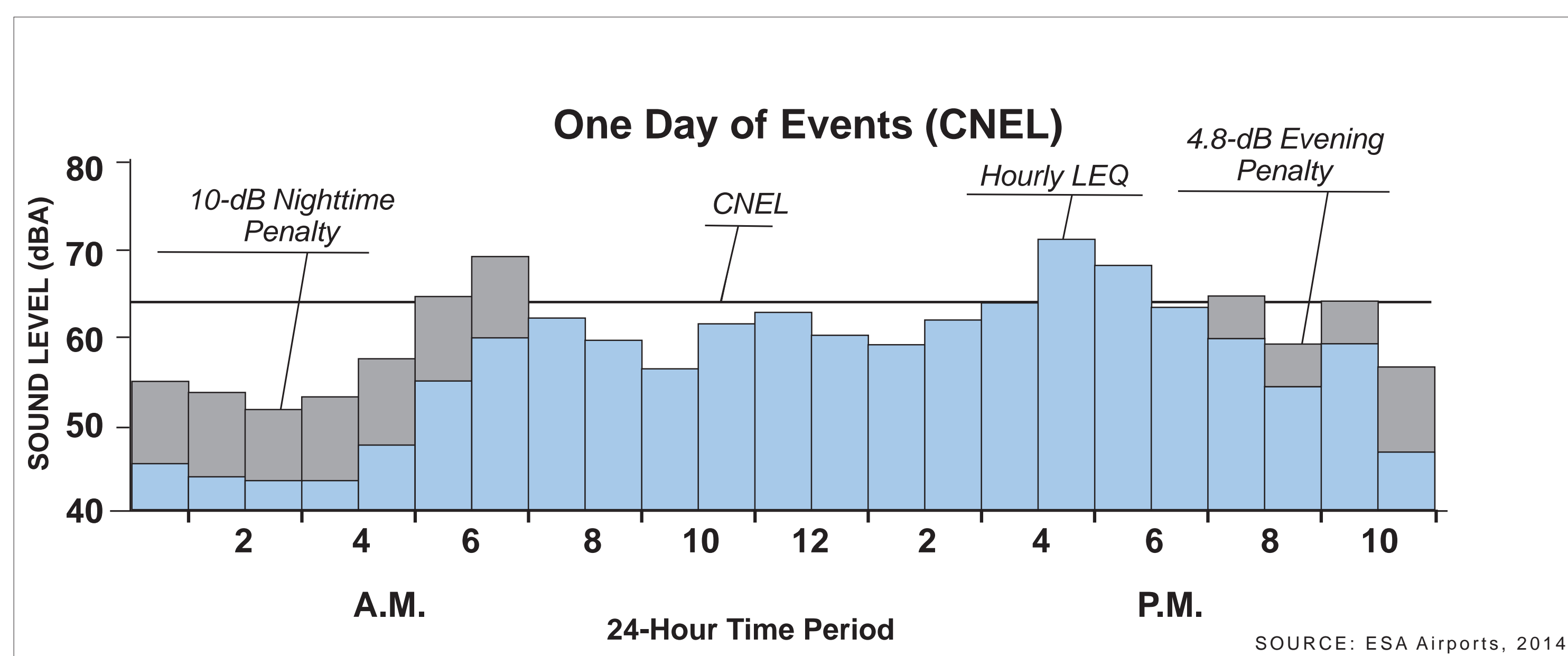
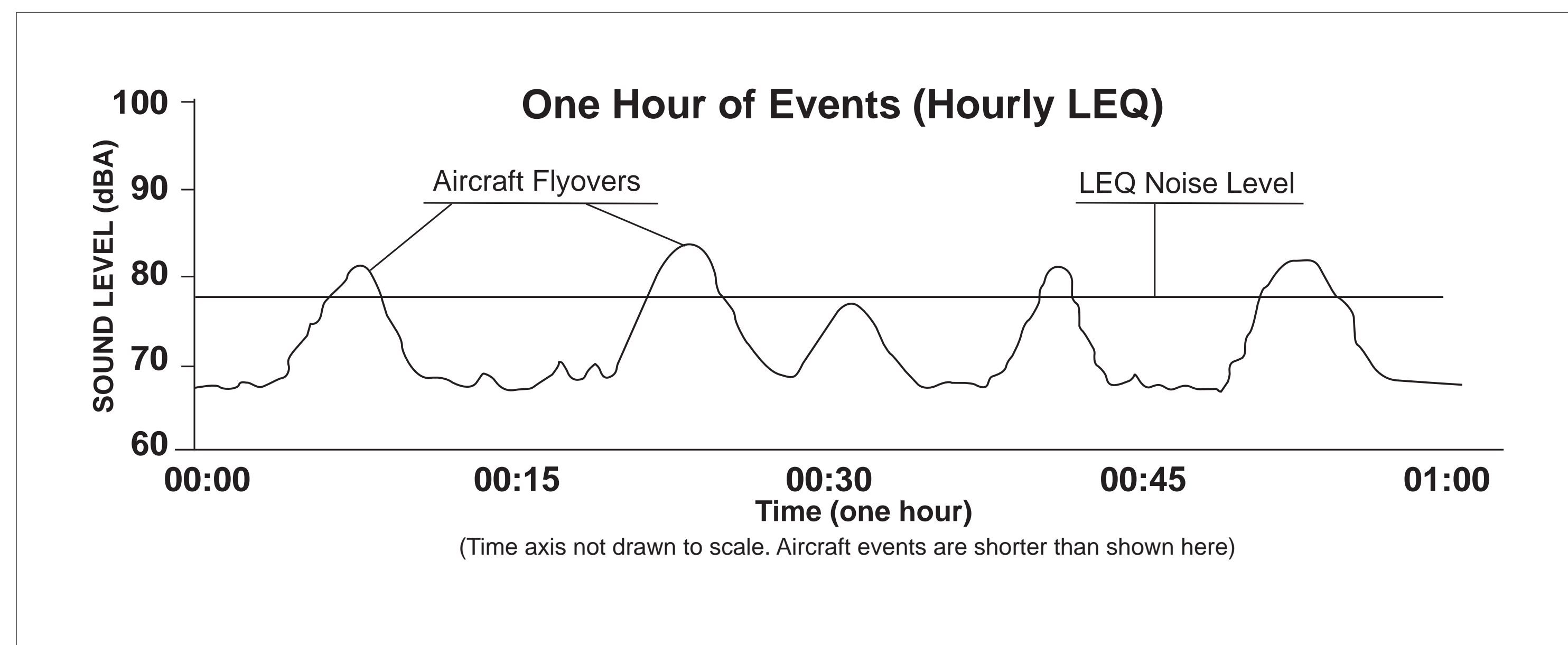
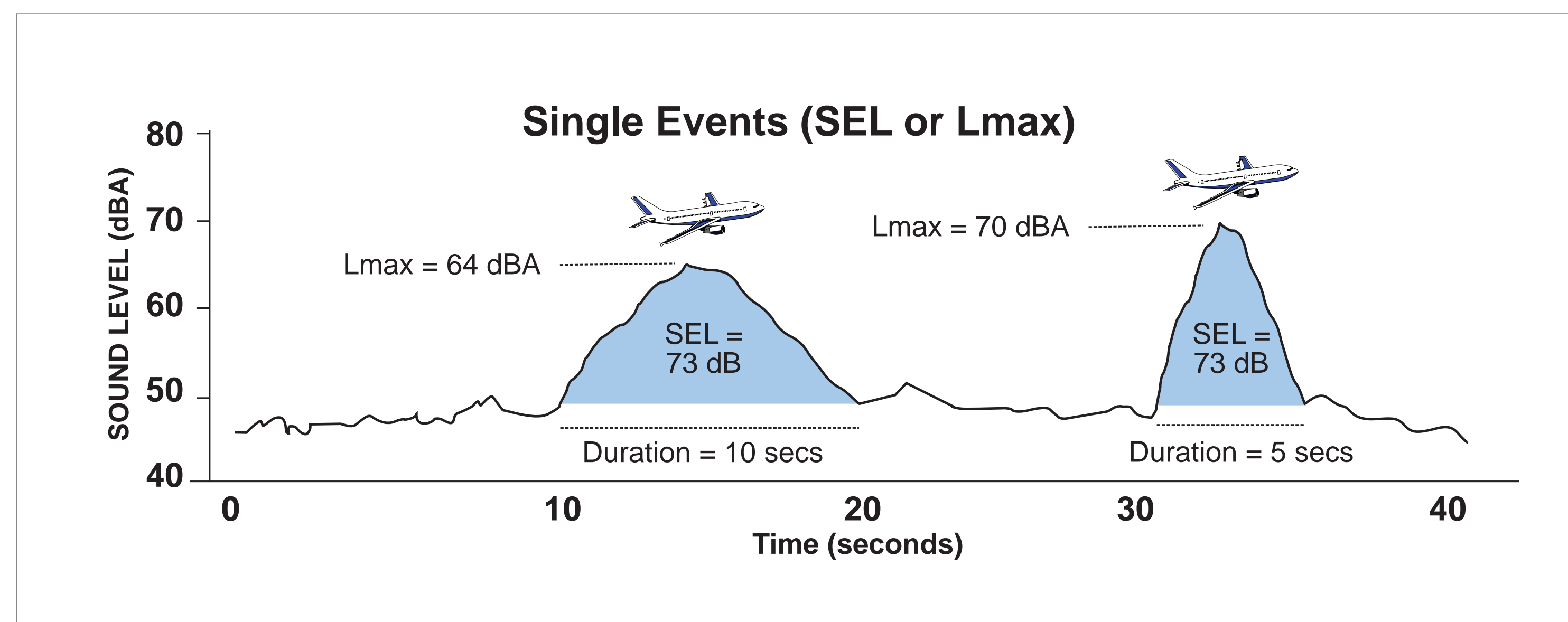
Los Angeles International Airport FAR Part 150 Noise Exposure Map Report Update

Noise Modeling Assumptions

- **Future (2020) Conditions Noise Exposure Map**
 - **705,254 annual operations in 2020**
 - **Aircraft fleet mix updated based on information contained in approved LAX environmental studies**
 - **Runway Use, time of day, and flight tracks assumed to be similar to 2015**
 - **Considered impact of runway safety area improvements for Runways 7L-25R and 6R-24L**

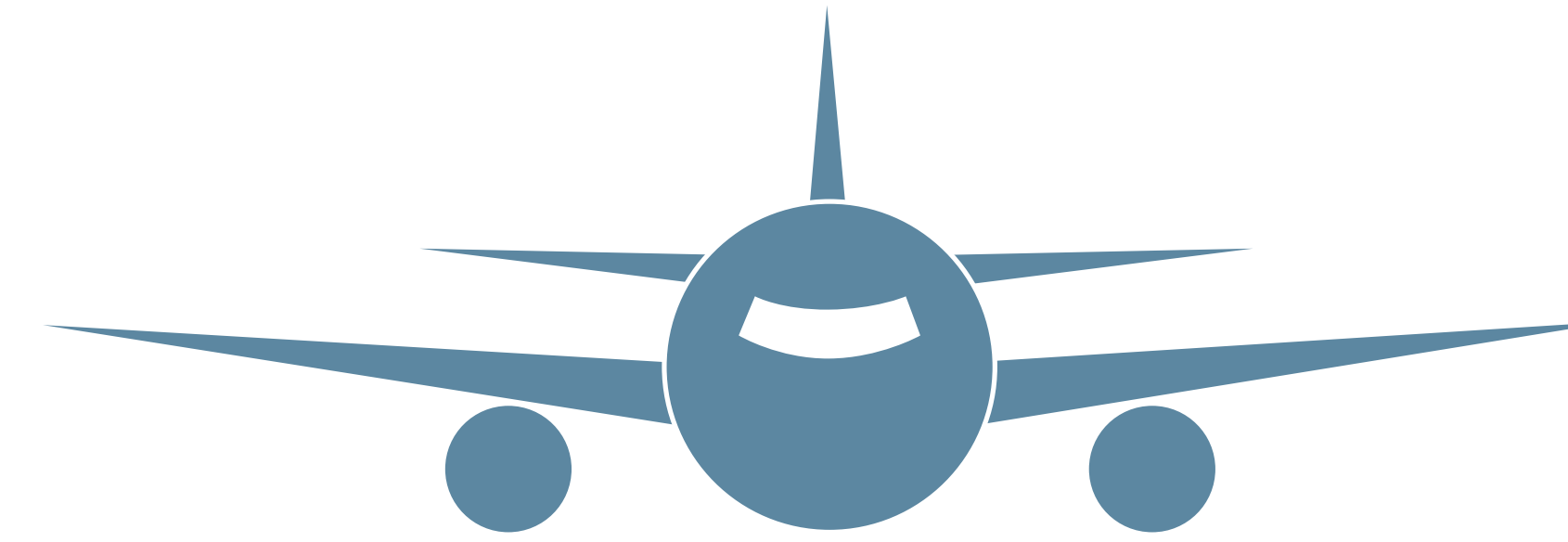
Los Angeles International Airport FAR Part 150 Noise Exposure Map Report Update

Aircraft Noise Levels

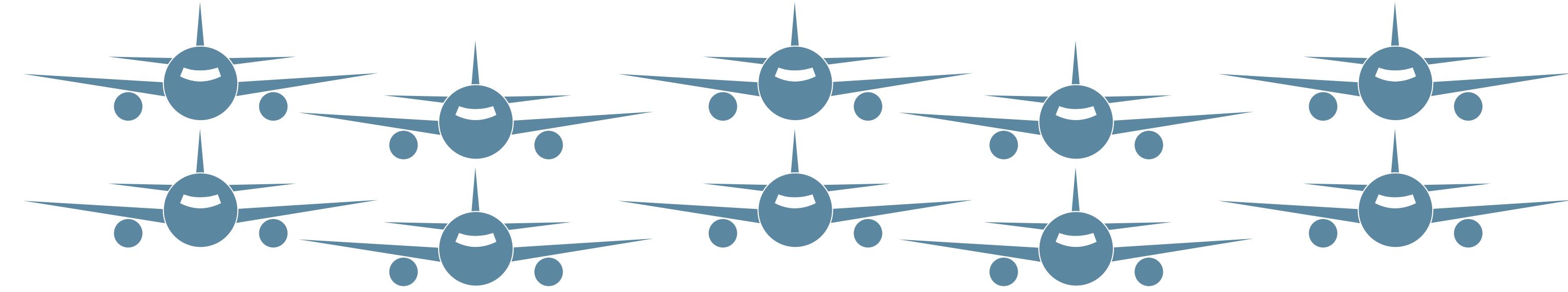


IDENTICAL CNEL LEVELS

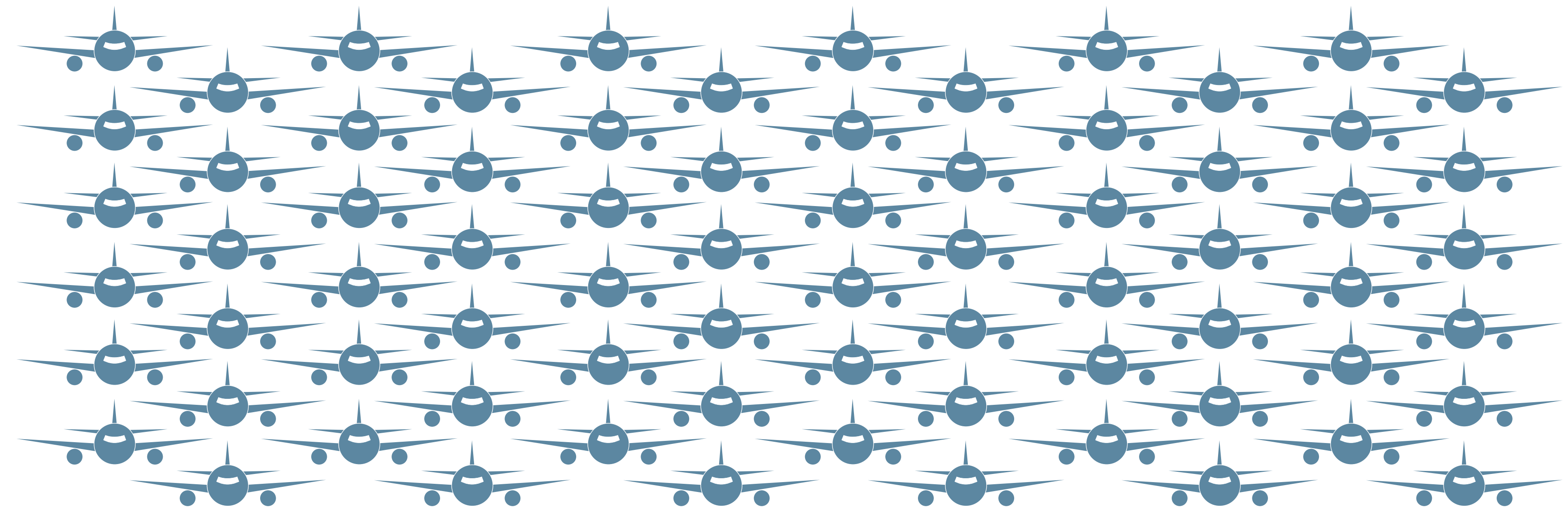
1 Event/Day SEL 114.4 dBA = CNEL 65



10 Events/Day SEL 104.4 dBA = CNEL 65



100 Events/Day SEL 94.4 dBA = CNEL 65



Los Angeles International Airport FAR Part 150 Noise Exposure Map Report Update

2015 Aircraft Fleet Mix

ANNUAL AVERAGE DAY OPERATIONS BY INM AIRCRAFT TYPE – 2015
LOS ANGELES INTERNATIONAL AIRPORT

| INM Aircraft Type | Aircraft Category | Arrivals | Departures | Total |
|-------------------|----------------------------|----------|------------|--------|
| 1900D | Non-Jet Aircraft | 8.62 | 8.62 | 17.24 |
| 727EM2 | Large Narrow-Body Aircraft | 0.22 | 0.22 | 0.43 |
| 737300 | Small Narrow-Body Aircraft | 25.34 | 25.34 | 50.67 |
| 737400 | Small Narrow-Body Aircraft | 7.11 | 7.11 | 14.23 |
| 737500 | Small Narrow-Body Aircraft | 0.07 | 0.07 | 0.14 |
| 737700 | Small Narrow-Body Aircraft | 84.74 | 84.74 | 169.48 |
| 737800 | Small Narrow-Body Aircraft | 122.50 | 122.50 | 245.00 |
| 747200 | Large Wide-Body Aircraft | 0.77 | 0.77 | 1.53 |
| 747400 | Large Wide-Body Aircraft | 19.50 | 19.50 | 39.01 |
| 7478 | New Large Aircraft | 3.53 | 3.53 | 7.05 |
| 757300 | Large Narrow-Body Aircraft | 14.27 | 14.27 | 28.55 |
| 757PW | Large Narrow-Body Aircraft | 52.17 | 52.17 | 104.34 |
| 757RR | Large Narrow-Body Aircraft | 22.14 | 22.14 | 44.28 |
| 767300 | Small Wide-Body Aircraft | 23.06 | 23.06 | 46.13 |
| 767400 | Small Wide-Body Aircraft | 0.22 | 0.22 | 0.44 |
| 767CF6 | Small Wide-Body Aircraft | 10.18 | 10.18 | 20.37 |
| 777200 | Large Wide-Body Aircraft | 12.51 | 12.51 | 25.02 |
| 777300 | Large Wide-Body Aircraft | 0.02 | 0.02 | 0.03 |
| 7773ER | Large Wide-Body Aircraft | 23.26 | 23.26 | 46.52 |
| 7878R | Large Narrow-Body Aircraft | 1.61 | 1.61 | 3.22 |
| A300-622R | Small Wide-Body Aircraft | 2.47 | 2.47 | 4.93 |
| A300B4-203 | Small Wide-Body Aircraft | 1.56 | 1.55 | 3.11 |
| A310-304 | Small Wide-Body Aircraft | 0.06 | 0.06 | 0.12 |
| A319-131 | Small Narrow-Body Aircraft | 36.26 | 36.26 | 72.53 |
| A320-211 | Small Narrow-Body Aircraft | 42.00 | 42.00 | 83.99 |
| A320-232 | Small Narrow-Body Aircraft | 31.60 | 31.60 | 63.20 |
| A321-232 | Small Narrow-Body Aircraft | 15.12 | 15.12 | 30.24 |
| A330-301 | Large Wide-Body Aircraft | 1.35 | 1.34 | 2.69 |
| A330-343 | Large Wide-Body Aircraft | 3.54 | 3.54 | 7.08 |
| A340-211 | Large Wide-Body Aircraft | 3.67 | 3.67 | 7.34 |
| A340-642 | Large Wide-Body Aircraft | 3.55 | 3.55 | 7.09 |
| A380-841 | New Large Aircraft | 4.17 | 4.17 | 8.33 |
| A380-861 | New Large Aircraft | 2.29 | 2.29 | 4.58 |
| BEC58P | Non-Jet Aircraft | 0.27 | 0.27 | 0.53 |
| C17 | Non-Jet Aircraft | 0.03 | 0.03 | 0.07 |
| C5A | Non-Jet Aircraft | 0.01 | 0.01 | 0.03 |
| CIT3 | Small Jet Aircraft | 0.13 | 0.13 | 0.26 |
| CL600 | Small Jet Aircraft | 3.82 | 3.82 | 7.63 |
| CL601 | Small Jet Aircraft | 66.84 | 66.84 | 133.69 |
| CNA172 | Non-Jet Aircraft | 0.04 | 0.04 | 0.08 |
| CNA182 | Non-Jet Aircraft | 0.01 | 0.01 | 0.02 |
| CNA206 | Non-Jet Aircraft | 0.03 | 0.03 | 0.07 |
| CNA208 | Non-Jet Aircraft | 0.53 | 0.53 | 1.06 |
| CNA20T | Non-Jet Aircraft | 0.01 | 0.01 | 0.02 |
| CNA441 | Non-Jet Aircraft | 0.88 | 0.88 | 1.77 |
| CNA500 | Small Jet Aircraft | 0.36 | 0.36 | 0.71 |

ANNUAL AVERAGE DAY OPERATIONS BY INM AIRCRAFT TYPE – 2015
LOS ANGELES INTERNATIONAL AIRPORT

| INM Aircraft Type | Aircraft Category | Arrivals | Departures | Total |
|---------------------|----------------------------|---------------|---------------|-----------------|
| CNA510 | Small Jet Aircraft | 0.74 | 0.74 | 1.49 |
| CNA525C | Small Jet Aircraft | 0.71 | 0.71 | 1.43 |
| CNA55B | Small Jet Aircraft | 0.52 | 0.52 | 1.04 |
| CNA560E | Small Jet Aircraft | 0.24 | 0.24 | 0.47 |
| CNA560XL | Small Jet Aircraft | 1.23 | 1.23 | 2.45 |
| CNA680 | Small Jet Aircraft | 0.63 | 0.63 | 1.26 |
| CNA750 | Small Jet Aircraft | 1.97 | 1.97 | 3.94 |
| CRJ9-ER | Small Jet Aircraft | 79.41 | 79.41 | 158.83 |
| CVR580 | Non-Jet Aircraft | 0.61 | 0.61 | 1.23 |
| DC1010 | Large Wide-Body Aircraft | 3.64 | 3.64 | 7.29 |
| DC9Q9 | Small Narrow-Body Aircraft | 0.03 | 0.03 | 0.05 |
| DHC6 | Non-Jet Aircraft | 0.06 | 0.06 | 0.13 |
| DHC830 | Non-Jet Aircraft | 8.72 | 8.72 | 17.44 |
| DO328 | Non-Jet Aircraft | 0.03 | 0.03 | 0.06 |
| ECLIPSE500 | Small Jet Aircraft | 0.04 | 0.04 | 0.08 |
| EMB120 | Non-Jet Aircraft | 47.91 | 47.91 | 95.81 |
| EMB145 | Small Jet Aircraft | 1.46 | 1.46 | 2.92 |
| EMB14L | Small Jet Aircraft | 0.20 | 0.20 | 0.40 |
| EMB170 | Small Jet Aircraft | 4.84 | 4.84 | 9.67 |
| EMB190 | Small Jet Aircraft | 5.64 | 5.64 | 11.27 |
| F10062 | Small Jet Aircraft | 1.12 | 1.12 | 2.25 |
| FAL20 | Small Jet Aircraft | 0.09 | 0.09 | 0.17 |
| GASEPV | Non-Jet Aircraft | 0.11 | 0.11 | 0.21 |
| GII | Small Jet Aircraft | 0.12 | 0.12 | 0.24 |
| GIIB | Small Jet Aircraft | 0.53 | 0.53 | 1.06 |
| GIV | Small Jet Aircraft | 3.48 | 3.48 | 6.97 |
| GV | Small Jet Aircraft | 3.40 | 3.40 | 6.81 |
| IA1125 | Small Jet Aircraft | 0.28 | 0.28 | 0.56 |
| LEAR25 | Small Jet Aircraft | 0.06 | 0.06 | 0.12 |
| LEAR35 | Small Jet Aircraft | 3.27 | 3.27 | 6.54 |
| MD11GE | Large Wide-Body Aircraft | 4.51 | 4.51 | 9.03 |
| MD11PW | Large Wide-Body Aircraft | 1.69 | 1.69 | 3.38 |
| MD81 | Small Narrow-Body Aircraft | 0.03 | 0.03 | 0.07 |
| MD82 | Small Narrow-Body Aircraft | 2.69 | 2.69 | 5.37 |
| MD83 | Small Narrow-Body Aircraft | 5.07 | 5.07 | 10.14 |
| MD9025 | Small Narrow-Body Aircraft | 0.02 | 0.02 | 0.03 |
| MU3001 | Small Jet Aircraft | 1.17 | 1.17 | 2.34 |
| PA28 | Non-Jet Aircraft | 0.02 | 0.02 | 0.05 |
| PA31 | Non-Jet Aircraft | 0.02 | 0.02 | 0.03 |
| PA42 | Non-Jet Aircraft | 0.02 | 0.02 | 0.04 |
| SA365N | Helicopter | 3.34 | 3.34 | 6.67 |
| SD330 | Non-Jet Aircraft | 0.26 | 0.26 | 0.52 |
| All Aircraft | | 842.35 | 842.35 | 1,684.70 |

NOTE: Values may not sum to totals shown due to rounding.
SOURCE: ESA Airports, October 2014.



Los Angeles International Airport FAR Part 150 Noise Exposure Map Report Update

2020 Aircraft Fleet Mix

ANNUAL AVERAGE DAY OPERATIONS BY INM AIRCRAFT TYPE – 2020
LOS ANGELES INTERNATIONAL AIRPORT

| INM Aircraft Type | Aircraft Category | Arrivals | Departures | Total |
|-------------------|----------------------------|----------|------------|--------|
| 1900D | Non-Jet Aircraft | 9.46 | 9.46 | 18.91 |
| 737700 | Small Narrow-Body Aircraft | 136.81 | 136.81 | 273.63 |
| 737800 | Small Narrow-Body Aircraft | 141.71 | 141.71 | 283.41 |
| 747400 | Large Wide-Body Aircraft | 17.10 | 17.10 | 34.19 |
| 7478 | New Large Aircraft | 4.08 | 4.08 | 8.16 |
| 757300 | Large Narrow-Body Aircraft | 16.51 | 16.51 | 33.02 |
| 757PW | Large Narrow-Body Aircraft | 60.62 | 60.62 | 121.24 |
| 757RR | Large Narrow-Body Aircraft | 25.65 | 25.65 | 51.30 |
| 767300 | Small Wide-Body Aircraft | 31.55 | 31.55 | 63.11 |
| 767400 | Small Wide-Body Aircraft | 0.25 | 0.25 | 0.51 |
| 767CF6 | Small Wide-Body Aircraft | 11.78 | 11.78 | 23.56 |
| 777200 | Large Wide-Body Aircraft | 26.22 | 26.22 | 52.43 |
| 777300 | Large Wide-Body Aircraft | 0.02 | 0.02 | 0.04 |
| 7773ER | Large Wide-Body Aircraft | 26.90 | 26.90 | 53.81 |
| 7878R | Large Narrow-Body Aircraft | 1.86 | 1.86 | 3.72 |
| A319-131 | Small Narrow-Body Aircraft | 41.95 | 41.95 | 83.90 |
| A320-211 | Small Narrow-Body Aircraft | 48.58 | 48.58 | 97.16 |
| A320-232 | Small Narrow-Body Aircraft | 45.85 | 45.85 | 91.71 |
| A321-232 | Small Narrow-Body Aircraft | 17.49 | 17.49 | 34.98 |
| A330-301 | Large Wide-Body Aircraft | 1.56 | 1.56 | 3.11 |
| A330-343 | Large Wide-Body Aircraft | 4.09 | 4.09 | 8.19 |
| A340-211 | Large Wide-Body Aircraft | 4.24 | 4.24 | 8.49 |
| A340-642 | Large Wide-Body Aircraft | 4.10 | 4.10 | 8.21 |
| A380-841 | New Large Aircraft | 7.21 | 7.21 | 14.42 |
| A380-861 | New Large Aircraft | 6.63 | 6.63 | 13.27 |
| BEC58P | Non-Jet Aircraft | 0.28 | 0.28 | 0.57 |
| C17 | Non-Jet Aircraft | 0.03 | 0.03 | 0.07 |
| C5A | Non-Jet Aircraft | 0.01 | 0.01 | 0.03 |
| CIT3 | Small Jet Aircraft | 0.14 | 0.14 | 0.27 |
| CL600 | Small Jet Aircraft | 4.07 | 4.07 | 8.14 |
| CL601 | Small Jet Aircraft | 73.33 | 73.33 | 146.65 |
| CNA172 | Non-Jet Aircraft | 0.04 | 0.04 | 0.09 |
| CNA182 | Non-Jet Aircraft | 0.01 | 0.01 | 0.02 |
| CNA206 | Non-Jet Aircraft | 0.03 | 0.03 | 0.07 |
| CNA208 | Non-Jet Aircraft | 0.56 | 0.56 | 1.13 |
| CNA441 | Non-Jet Aircraft | 0.97 | 0.97 | 1.94 |
| CNA500 | Small Jet Aircraft | 0.38 | 0.38 | 0.76 |
| CNA510 | Small Jet Aircraft | 0.79 | 0.79 | 1.59 |
| CNA525C | Small Jet Aircraft | 0.76 | 0.76 | 1.52 |
| CNA55B | Small Jet Aircraft | 0.56 | 0.56 | 1.11 |
| CNA560E | Small Jet Aircraft | 0.25 | 0.25 | 0.50 |
| CNA560XL | Small Jet Aircraft | 1.31 | 1.31 | 2.61 |
| CNA680 | Small Jet Aircraft | 0.67 | 0.67 | 1.34 |
| CNA750 | Small Jet Aircraft | 2.10 | 2.10 | 4.20 |
| CRJ9-ER | Small Jet Aircraft | 91.87 | 91.87 | 183.73 |
| DHC6 | Non-Jet Aircraft | 0.07 | 0.07 | 0.14 |

ANNUAL AVERAGE DAY OPERATIONS BY INM AIRCRAFT TYPE – 2020
LOS ANGELES INTERNATIONAL AIRPORT

| INM Aircraft Type | Aircraft Category | Arrivals | Departures | Total |
|---------------------|----------------------------|---------------|---------------|-----------------|
| DHC830 | Non-Jet Aircraft | 10.81 | 10.81 | 21.62 |
| DO328 | Non-Jet Aircraft | 0.03 | 0.03 | 0.06 |
| ECLIPSE500 | Small Jet Aircraft | 0.04 | 0.04 | 0.09 |
| EMB120 | Non-Jet Aircraft | 52.55 | 52.55 | 105.10 |
| EMB145 | Small Jet Aircraft | 1.60 | 1.60 | 3.21 |
| EMB14L | Small Jet Aircraft | 0.22 | 0.22 | 0.44 |
| EMB170 | Small Jet Aircraft | 5.59 | 5.59 | 11.19 |
| EMB190 | Small Jet Aircraft | 6.52 | 6.52 | 13.04 |
| F10062 | Small Jet Aircraft | 1.20 | 1.20 | 2.40 |
| FAL20 | Small Jet Aircraft | 0.09 | 0.09 | 0.18 |
| GASEPV | Non-Jet Aircraft | 0.12 | 0.12 | 0.25 |
| GIV | Small Jet Aircraft | 3.84 | 3.84 | 7.68 |
| GV | Small Jet Aircraft | 4.19 | 4.19 | 8.39 |
| IA1125 | Small Jet Aircraft | 0.30 | 0.30 | 0.59 |
| LEAR35 | Small Jet Aircraft | 3.55 | 3.55 | 7.10 |
| MD9025 | Small Narrow-Body Aircraft | 0.02 | 0.02 | 0.04 |
| MU3001 | Small Jet Aircraft | 1.25 | 1.25 | 2.49 |
| PA28 | Non-Jet Aircraft | 0.03 | 0.03 | 0.05 |
| PA31 | Non-Jet Aircraft | 0.02 | 0.02 | 0.03 |
| PA42 | Non-Jet Aircraft | 0.02 | 0.02 | 0.04 |
| SA365N | Helicopter | 3.36 | 3.36 | 6.71 |
| SD330 | Non-Jet Aircraft | 0.29 | 0.29 | 0.57 |
| All Aircraft | | 966.10 | 966.10 | 1,932.20 |

NOTE: Values may not sum to totals shown due to rounding.
SOURCE: ESA Airports, October 2014.



Los Angeles International Airport FAR Part 150 Noise Exposure Map Report Update

2015 Time of Day

AIRCRAFT OPERATIONS BY TIME OF DAY - EXISTING (2015) CONDITIONS LOS ANGELES INTERNATIONAL AIRPORT

| Aircraft Category | Arrivals | | | | Departures | | | |
|---------------------------------|---------------|---------------|---------------|----------------|---------------|---------------|---------------|----------------|
| | Day | Evening | Night | Total | Day | Evening | Night | Total |
| Large Narrow-Body Aircraft | 49.45% | 25.66% | 24.90% | 100.00% | 73.93% | 2.36% | 23.71% | 100.00% |
| Large Wide-Body Aircraft | 67.99% | 11.99% | 20.01% | 100.00% | 48.64% | 13.53% | 37.82% | 100.00% |
| Non-Jet Aircraft | 74.40% | 15.19% | 10.41% | 100.00% | 72.35% | 15.49% | 12.16% | 100.00% |
| New Large Aircraft | 64.44% | 17.34% | 18.22% | 100.00% | 45.02% | 3.04% | 51.94% | 100.00% |
| Small Jet Aircraft | 72.04% | 19.37% | 8.59% | 100.00% | 74.75% | 16.21% | 9.04% | 100.00% |
| Small Narrow-Body Aircraft | 66.62% | 20.36% | 13.01% | 100.00% | 70.58% | 10.89% | 18.53% | 100.00% |
| Small Wide-Body Aircraft | 50.50% | 23.12% | 26.38% | 100.00% | 56.80% | 10.77% | 32.43% | 100.00% |
| All Aircraft¹ | 65.96% | 19.61% | 14.43% | 100.00% | 69.03% | 11.65% | 19.32% | 100.00% |

NOTES:

Day (7 a.m. to 7 p.m.); Evening (7 p.m. to 10 p.m.); Night (10 p.m. to 7 a.m.)

Values may not sum to 100% due to rounding.

¹ Does not include helicopter operations

SOURCE: ESA Airports, October 2014, based on LAX ANOMS data for calendar year 2013.



Los Angeles International Airport FAR Part 150 Noise Exposure Map Report Update

2020 Time of Day

AIRCRAFT OPERATIONS BY TIME OF DAY - FUTURE (2020) CONDITIONS LOS ANGELES INTERNATIONAL AIRPORT

| Aircraft Category | Arrivals | | | | Departures | | | |
|----------------------------------|---------------|---------------|---------------|----------------|---------------|---------------|---------------|----------------|
| | Day | Evening | Night | Total | Day | Evening | Night | Total |
| Large Narrow-Body Aircraft | 49.38% | 25.70% | 24.92% | 100.00% | 73.91% | 2.36% | 23.74% | 100.00% |
| Large Wide-Body Aircraft | 75.55% | 11.46% | 12.99% | 100.00% | 54.66% | 11.98% | 33.36% | 100.00% |
| Non-Jet Aircraft | 75.12% | 15.06% | 9.81% | 100.00% | 72.93% | 15.82% | 11.25% | 100.00% |
| New Large Aircraft | 72.23% | 13.31% | 14.46% | 100.00% | 52.09% | 2.54% | 45.37% | 100.00% |
| Small Jet Aircraft | 72.01% | 19.45% | 8.54% | 100.00% | 74.70% | 16.28% | 9.03% | 100.00% |
| Small Narrow-Body Aircraft | 65.95% | 20.38% | 13.67% | 100.00% | 69.83% | 10.93% | 19.24% | 100.00% |
| Small Wide-Body Aircraft | 54.56% | 24.69% | 20.75% | 100.00% | 61.33% | 11.89% | 26.77% | 100.00% |
| All Aircraft ¹ | 66.60% | 19.63% | 13.78% | 100.00% | 69.51% | 11.49% | 19.00% | 100.00% |

NOTES:

Day (7 a.m. to 7 p.m.); Evening (7 p.m. to 10 p.m.); Night (10 p.m. to 7 a.m.)

Values may not sum to 100% due to rounding.

¹ Does not include helicopter operations

SOURCE: ESA Airports, October 2014.



Los Angeles International Airport FAR Part 150 Noise Exposure Map Report Update

2015 Runway Use

RUNWAY USE BY OPERATION TYPE AND TIME OF DAY - EXISTING (2015) CONDITIONS LOS ANGELES INTERNATIONAL AIRPORT

| Runway | Arrival | | | Departure | | |
|--------------|----------------|----------------|----------------|----------------|----------------|----------------|
| | Day | Evening | Night | Day | Evening | Night |
| 06L | 0.47% | 0.23% | 3.55% | 0.02% | 0.01% | 0.01% |
| 06R | 0.01% | 0.00% | 15.73% | 0.46% | 0.24% | 0.22% |
| 07L | 0.01% | 0.01% | 6.55% | 0.55% | 0.28% | 0.51% |
| 07R | 0.54% | 0.28% | 4.30% | 0.01% | 0.02% | 0.17% |
| 24L | 1.58% | 2.39% | 1.27% | 43.20% | 40.02% | 25.87% |
| 24R | 45.91% | 46.64% | 30.97% | 1.49% | 0.47% | 1.33% |
| 25L | 49.44% | 47.12% | 35.62% | 3.23% | 5.05% | 10.82% |
| 25R | 2.04% | 3.33% | 2.01% | 51.04% | 53.91% | 61.08% |
| Total | 100.00% | 100.00% | 100.00% | 100.00% | 100.00% | 100.00% |

NOTES:

Day (7 a.m. to 7 p.m.); Evening (7 p.m. to 10 p.m.); Night (10 p.m. to 7 a.m.)

Values may not sum to 100% due to rounding.

Does not include helicopter operations

SOURCE: ESA Airports, October 2014, based on LAX ANOMS data for calendar year 2013.



Los Angeles International Airport FAR Part 150 Noise Exposure Map Report Update

2020 Runway Use

RUNWAY USE BY OPERATION TYPE AND TIME OF DAY - FUTURE (2020) CONDITIONS LOS ANGELES INTERNATIONAL AIRPORT

| Runway | Arrival | | | Departure | | |
|--------------|----------------|----------------|----------------|----------------|----------------|----------------|
| | Day | Evening | Night | Day | Evening | Night |
| 06L | 0.48% | 0.23% | 3.38% | 0.02% | 0.01% | 0.01% |
| 06R | 0.01% | 0.00% | 15.00% | 0.45% | 0.26% | 0.24% |
| 07L | 0.01% | 0.01% | 4.90% | 0.55% | 0.28% | 0.50% |
| 07R | 0.53% | 0.28% | 3.17% | 0.01% | 0.01% | 0.17% |
| 24L | 1.58% | 2.39% | 1.43% | 44.22% | 42.15% | 28.55% |
| 24R | 46.53% | 47.21% | 34.12% | 1.50% | 0.49% | 1.43% |
| 25L | 48.82% | 46.52% | 36.09% | 2.90% | 3.45% | 9.60% |
| 25R | 2.04% | 3.36% | 1.92% | 50.35% | 53.35% | 59.51% |
| Total | 100.00% | 100.00% | 100.00% | 100.00% | 100.00% | 100.00% |

NOTES:

Day (7 a.m. to 7 p.m.); Evening (7 p.m. to 10 p.m.); Night (10 p.m. to 7 a.m.)

Values may not sum to 100% due to rounding.

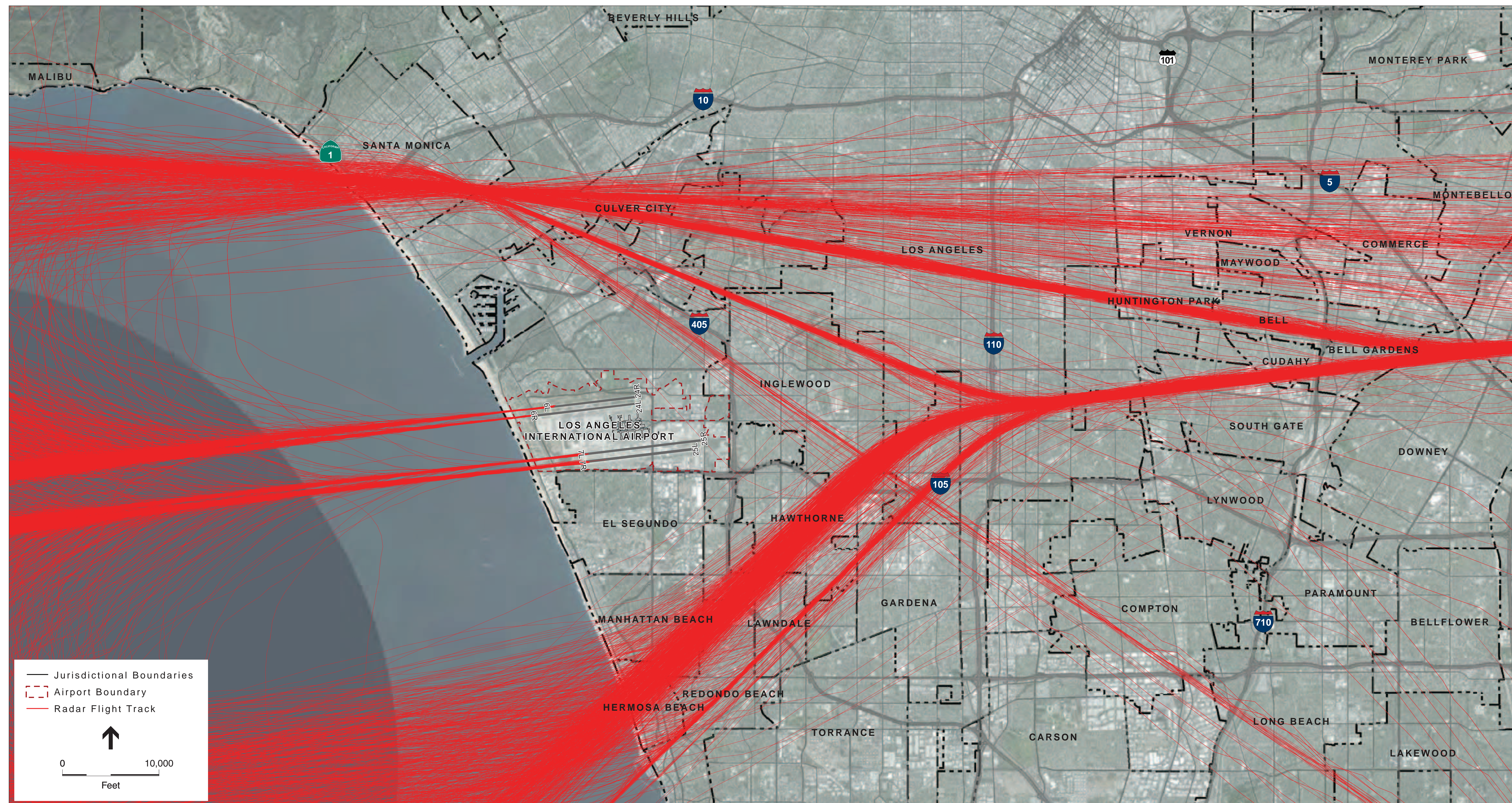
Does not include helicopter operations

SOURCE: ESA Airports, October 2014.



Los Angeles International Airport FAR Part 150 Noise Exposure Map Report Update

Arrival Flight Tracks – Runways 6 and 7



SOURCES: LAWA Airport Noise and Operations Management System data, 2013; LA Co. DRP, 2014; City of LA DCP, 2013; ESA Airports, 2014; ESRI ArcGIS Online, 2011; PCR Services Corporation, 2012

Los Angeles International Airport 14 CFR Part 150 Study . 130072.03

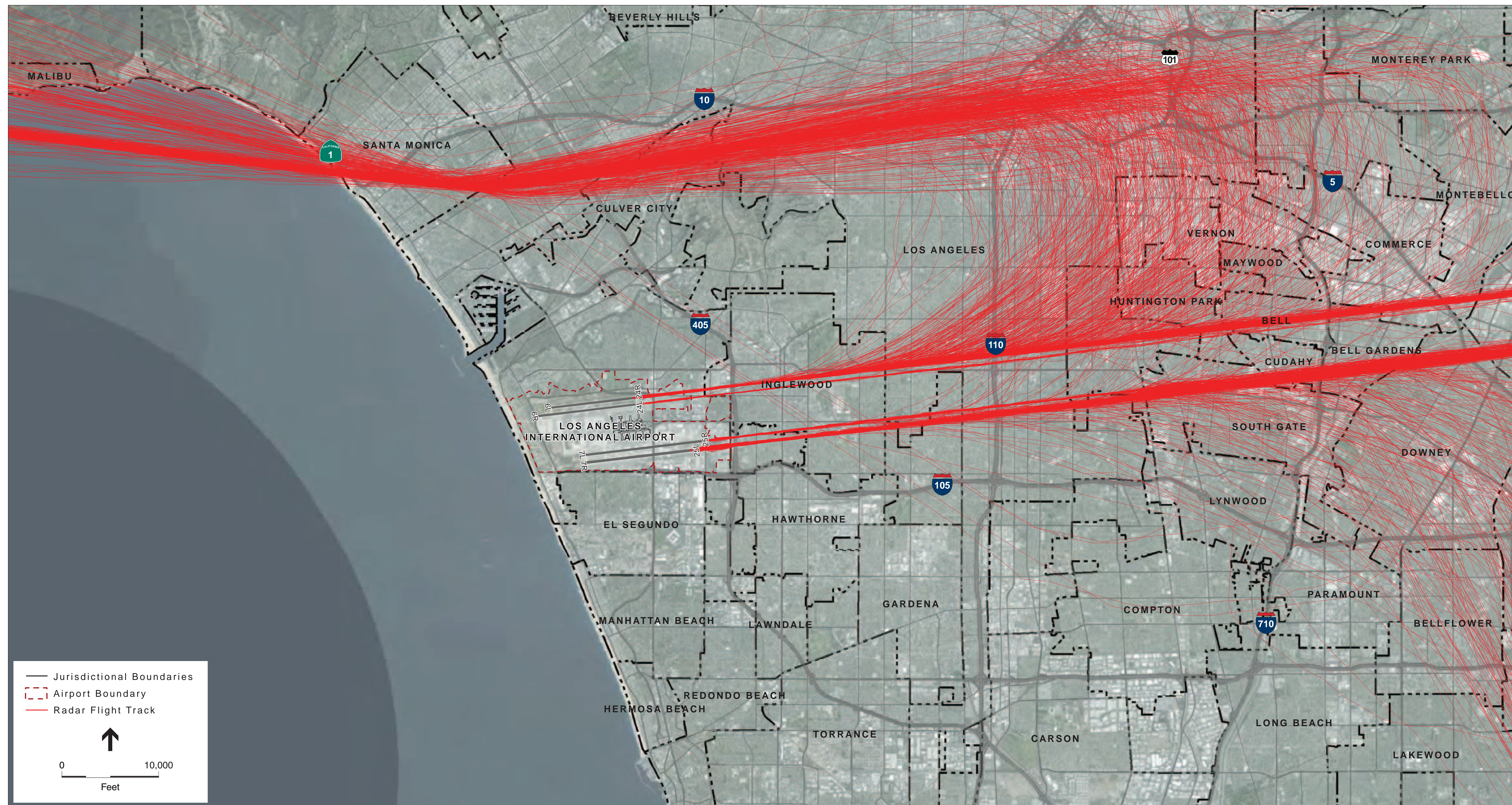
Exhibit C-2

Radarr Flight Tracks – Arrivals from the West



Los Angeles International Airport FAR Part 150 Noise Exposure Map Report Update

Arrival Flight Tracks – Runways 24 and 25



SOURCES: LAVA Airport Noise and Operations Management System data, 2013; LA Co. DRP, 2014; City of LA DCP, 2013; ESA Airports, 2014; ESRI ArcGIS Online, 2011; PCR Services Corporation, 2012

Los Angeles International Airport 14 CFR Part 150 Study . 130072.03

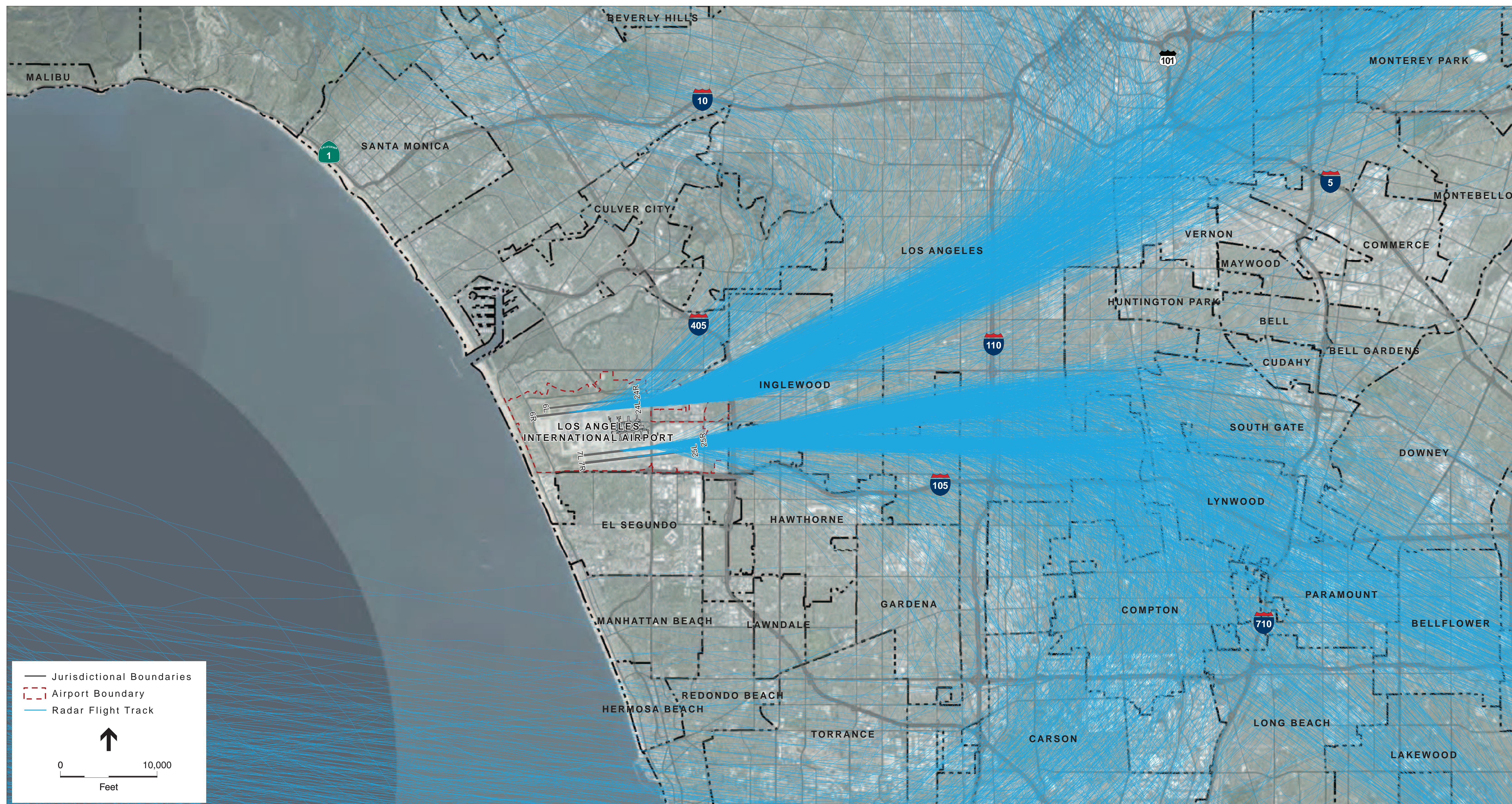
Exhibit C-1

Radarr Flight Tracks – Arrivals from the East



Los Angeles International Airport FAR Part 150 Noise Exposure Map Report Update

Departure Flight Tracks – Runways 6 and 7



SOURCES: LAWA Airport Noise and Operations Management System data, 2013; LA Co. DRP, 2014; City of LA DCP, 2013; ESA Airports, 2014; ESRI ArcGIS Online, 2011; PCR Services Corporation, 2012

Los Angeles International Airport 14 CFR Part 150 Study . 130072.03
Exhibit C-3

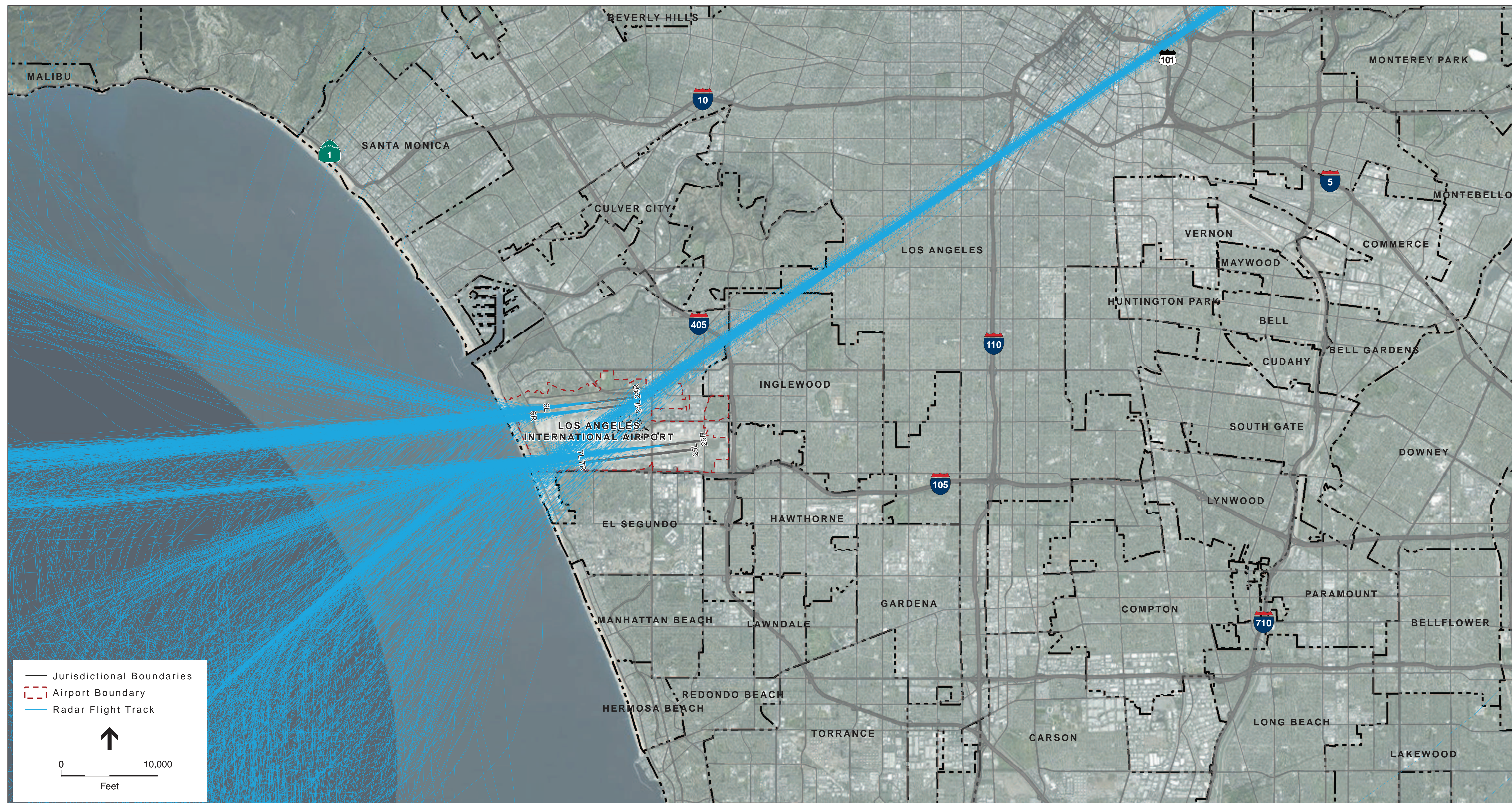
Radar Flight Tracks – Departures to the East



TRIM SIZE - 40" x 30"

Los Angeles International Airport FAR Part 150 Noise Exposure Map Report Update

Departure Flight Tracks – Runways 24 and 25



SOURCES: LAWA Airport Noise and Operations Management System data, 2013; LA Co. DRP, 2014; City of LA DCP, 2013; ESA Airports, 2014; ESRI ArcGIS Online, 2011; PCR Services Corporation, 2012

Los Angeles International Airport 14 CFR Part 150 Study . 130072.03
Exhibit C-4

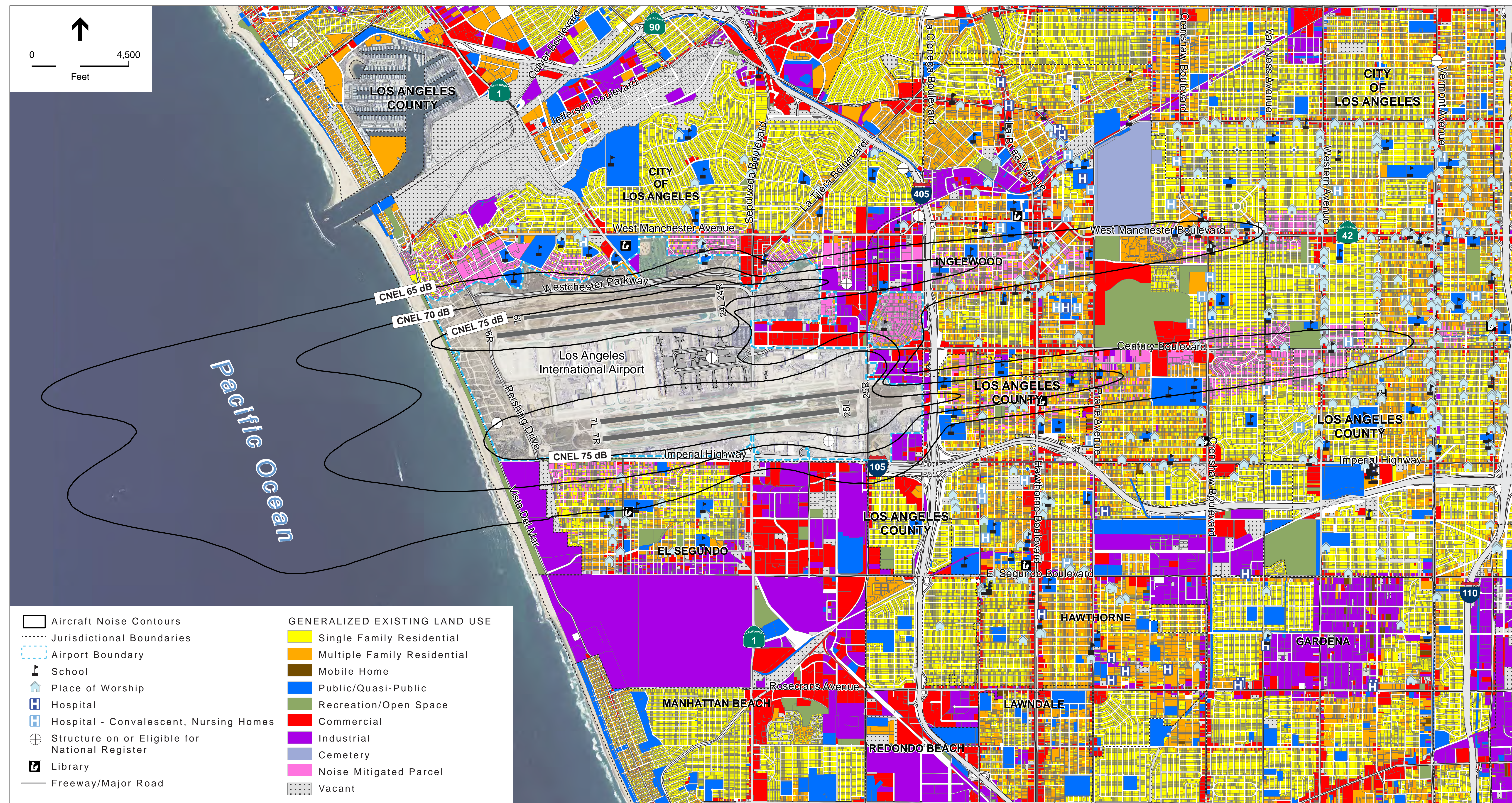
Radar Flight Tracks – Departures to the West



TRIM SIZE - 40" x 30"

Los Angeles International Airport FAR Part 150 Noise Exposure Map Report Update

2015 Noise Exposure Map



SOURCES: LAWA, 2014; ESA Airports, 2014; ESRI ArcGIS Online, 2011; ESRI World Imagery - Aerial; PCR Services Corporation, 2012
 NOTES: CNEL = Community Noise Equivalent Level; dB = Decibel.

Los Angeles International Airport 14 CFR Part 150 Study - 130072.03

Exhibit 5-1

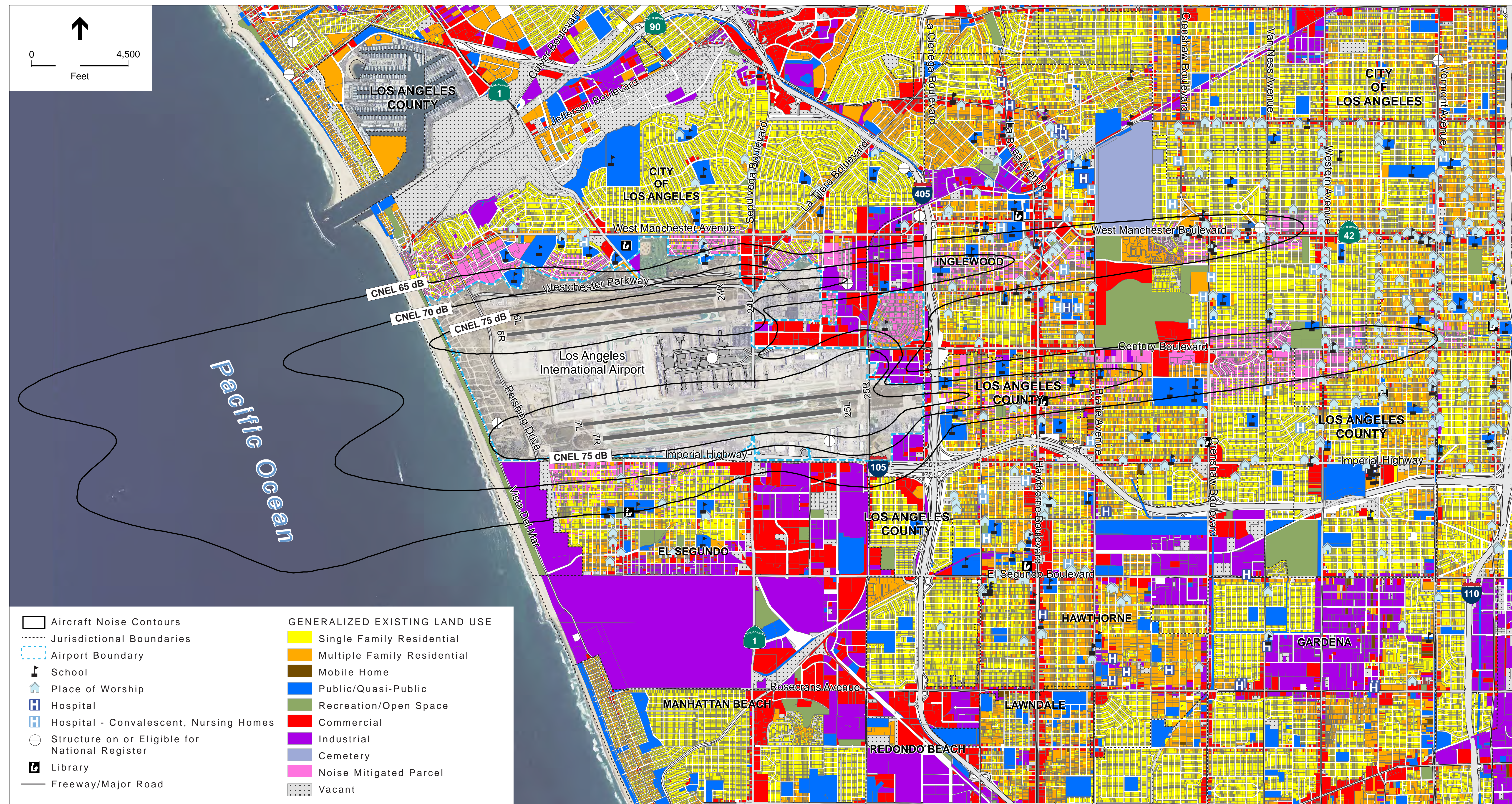
2015 Noise Exposure Map – Los Angeles International Airport



TRIM SIZE - 40" x 30"

Los Angeles International Airport FAR Part 150 Noise Exposure Map Report Update

2020 Noise Exposure Map



SOURCES: LAWA, 2014; ESA Airports, 2014; ESRI ArcGIS Online, 2011; ESRI World Imagery - Aerial; PCR Services Corporation, 2012
 NOTES: CNEL = Community Noise Equivalent Level; dB = Decibel.

Los Angeles International Airport 14 CFR Part 150 Study . 130072.03

Exhibit 5-2

2020 Noise Exposure Map – Los Angeles International Airport

