



Statistical Update on LAX Aircraft Operations

July 11, 2018

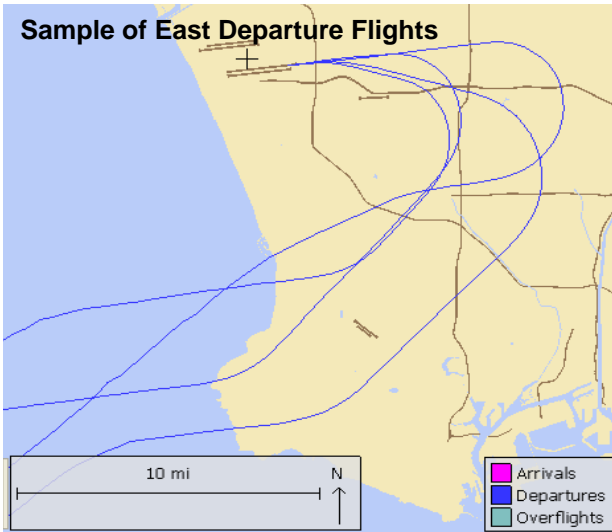
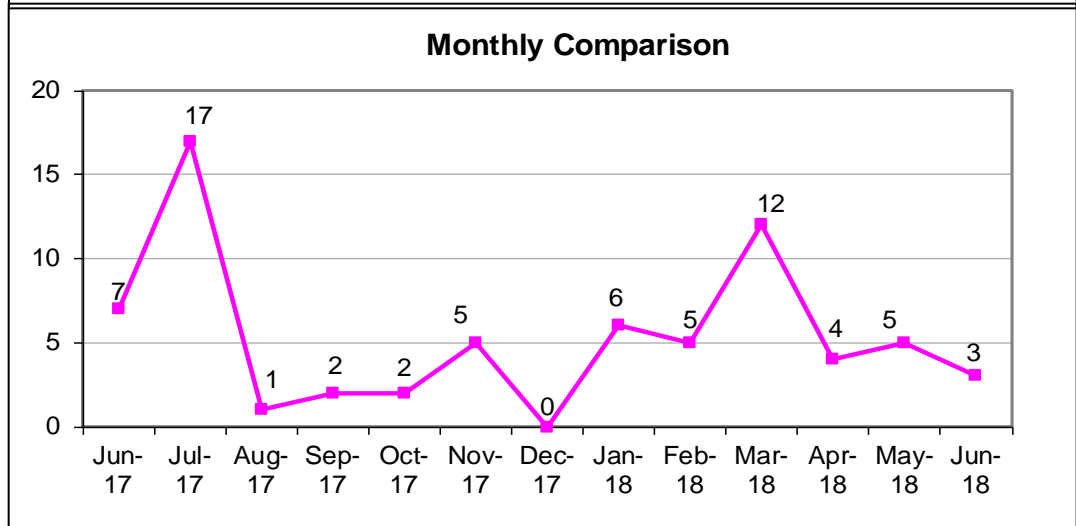
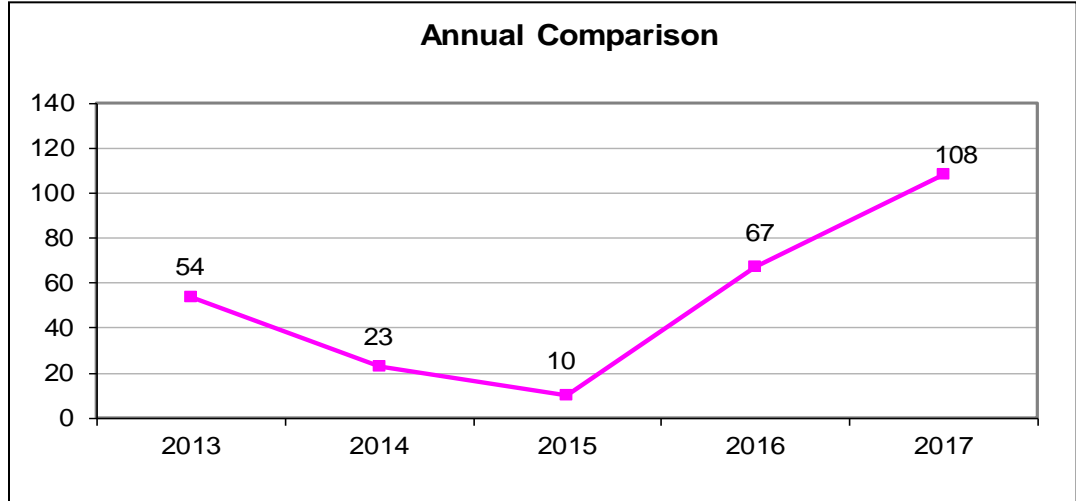
LAX/Community Noise Roundtable

Statistical information on the following operations:

- East Departures
- Early Turns
- Go-arounds
- PV Overflights

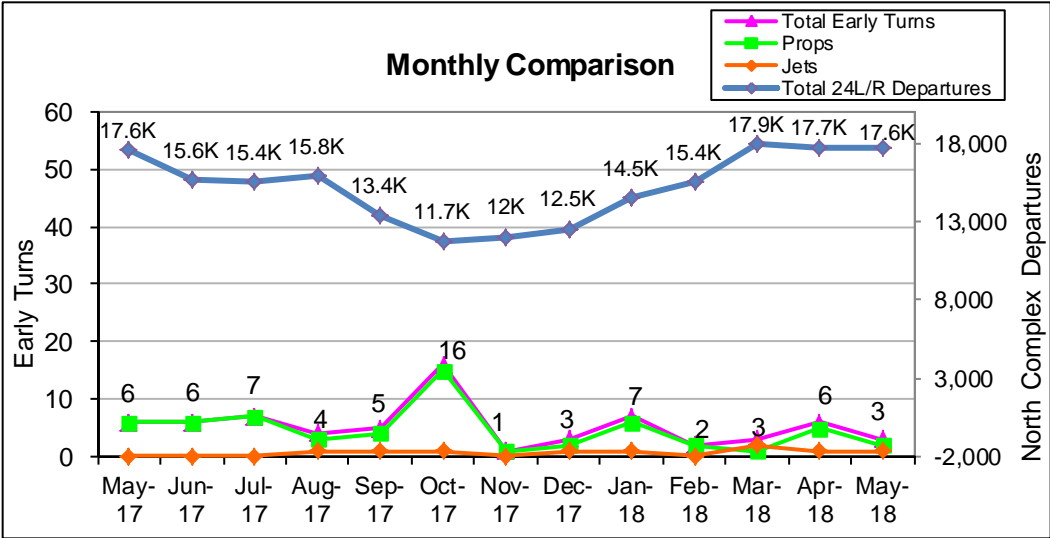
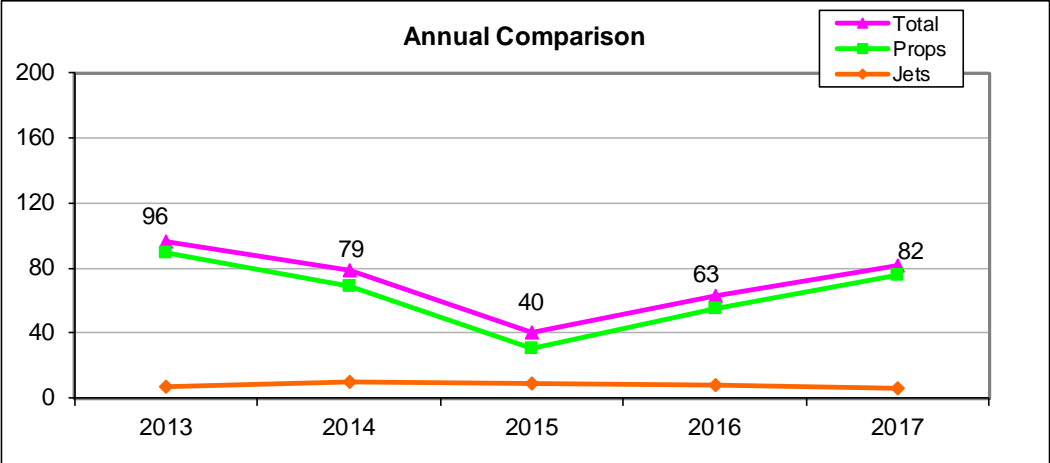
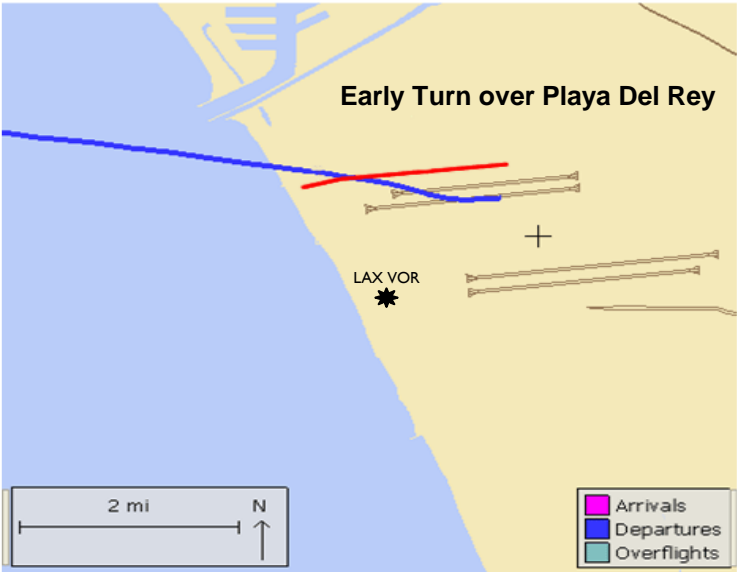
Non-Conforming East Departures Midnight to 6:30 AM

This report shows a summary of aircraft operations departing to the east while the airport is still conducting westerly departures between midnight and 6:30 a.m. These individual easterly departures usually occur when the pilot of a heavy aircraft (e.g. B747s) determines that the tail wind is too great for the weight of the aircraft and requests to depart east into the wind for aircraft safety.



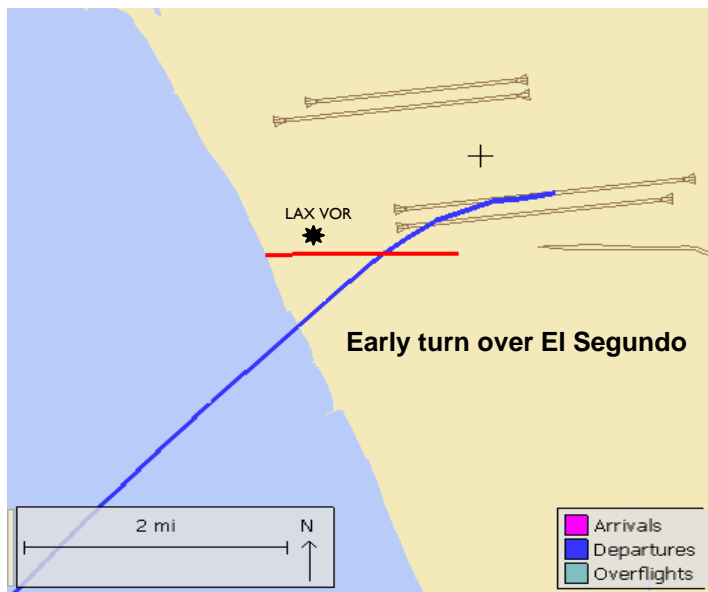
Early Turns to the North

Aircraft departing to the ocean turn early prior to reaching the shoreline

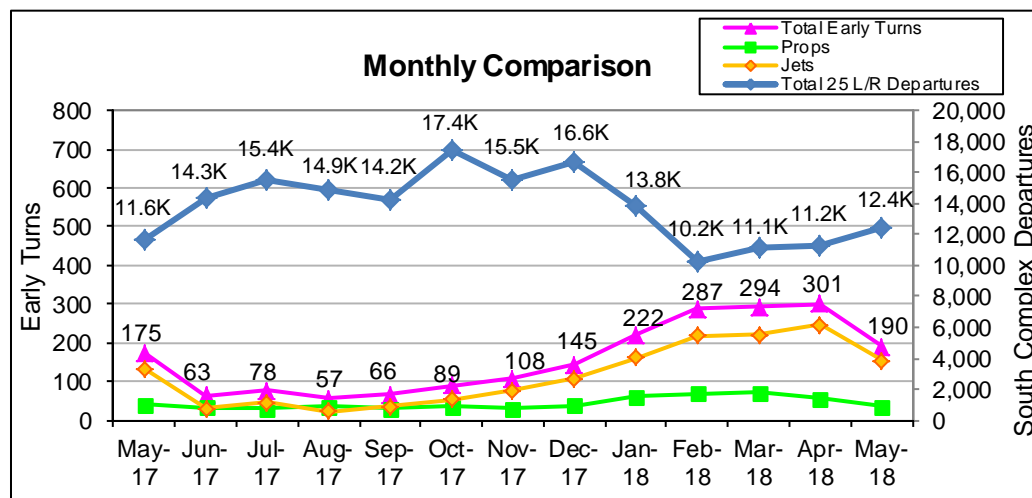
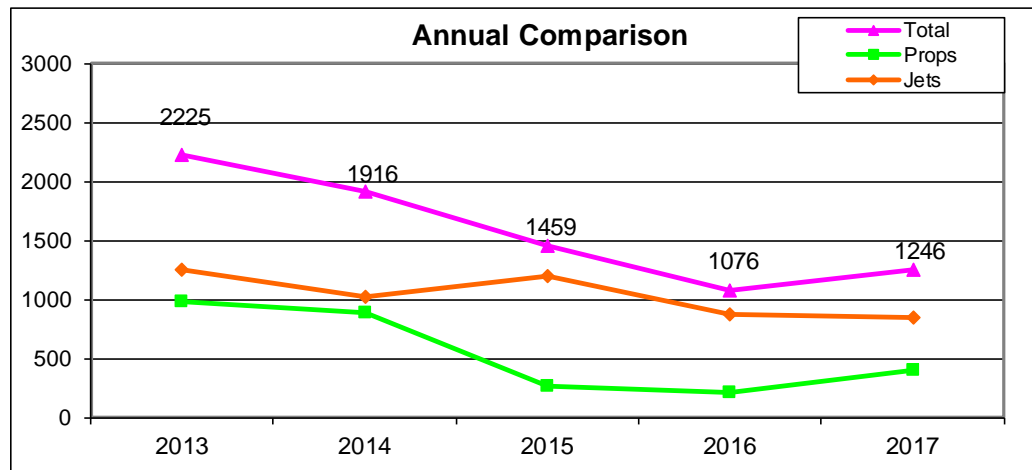


Early Turns to the South

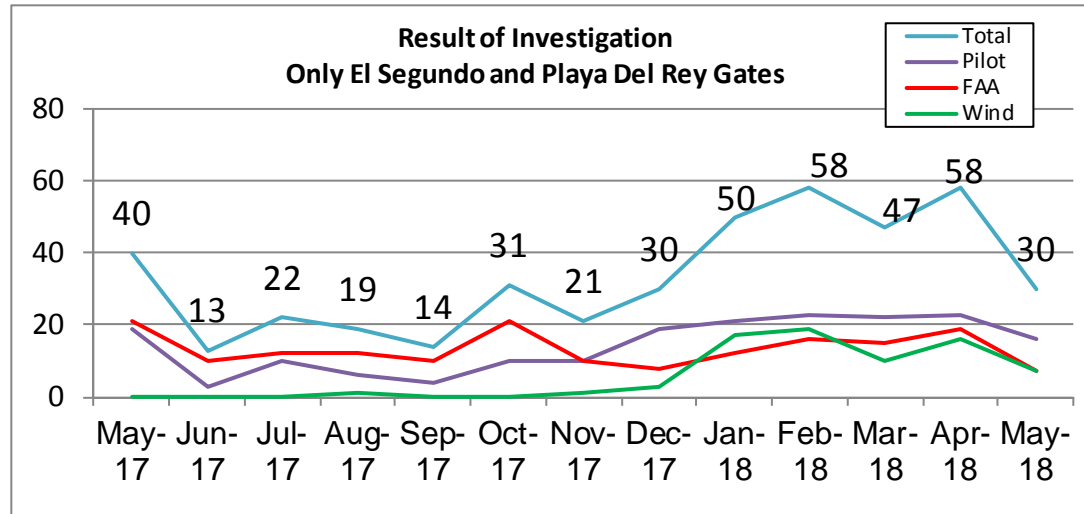
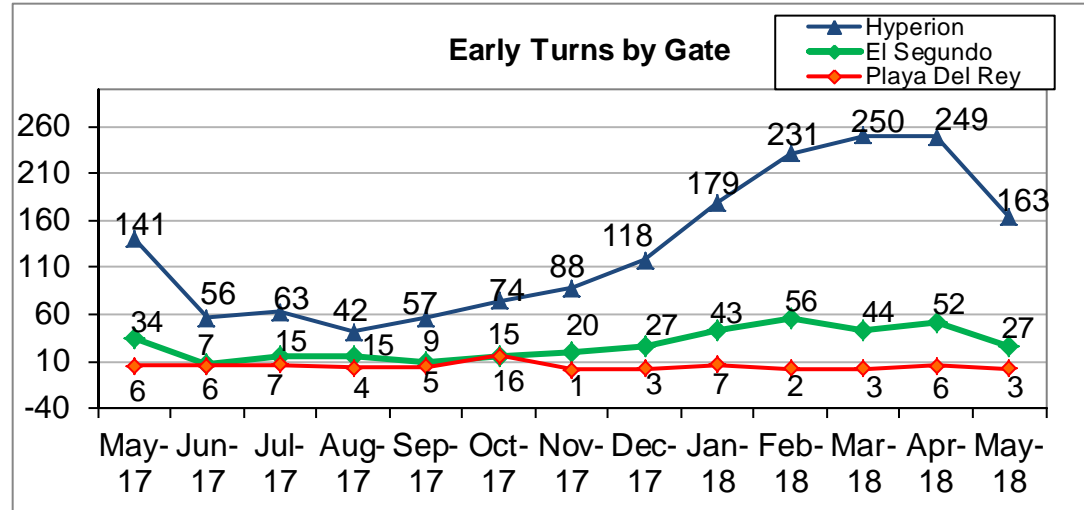
Aircraft departing to the ocean turn early prior to reaching the shoreline



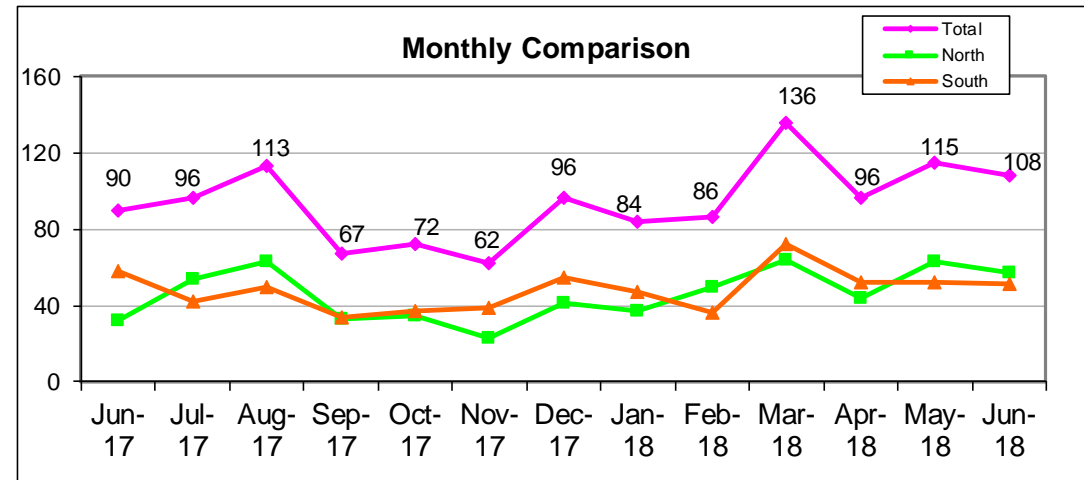
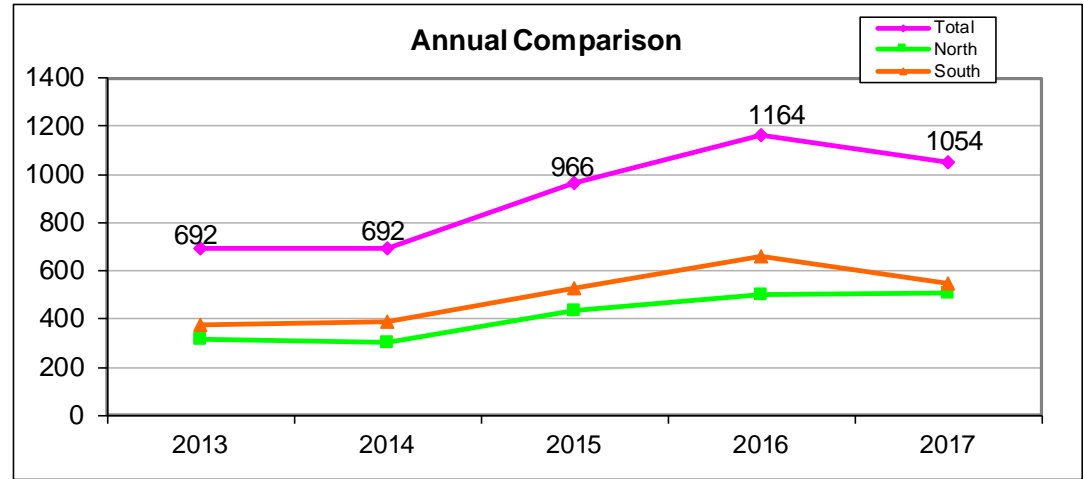
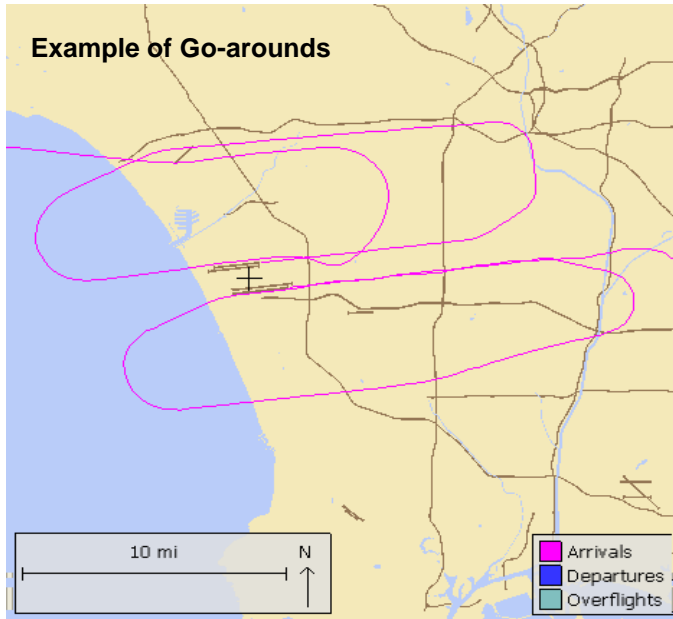
Note: The increase in early turns from January 2018 to May 2018 is due to Rwy 25R closure for reconstruction.



Early Turn Breakdown

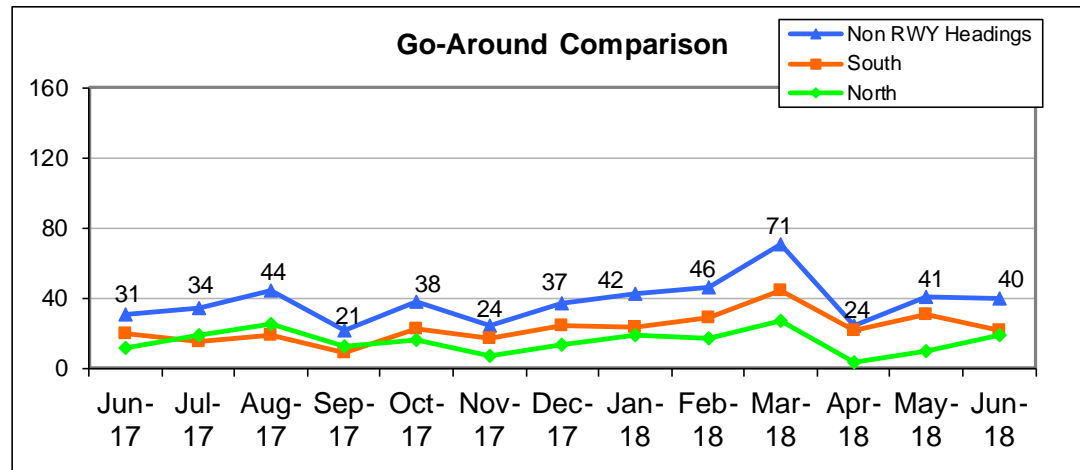
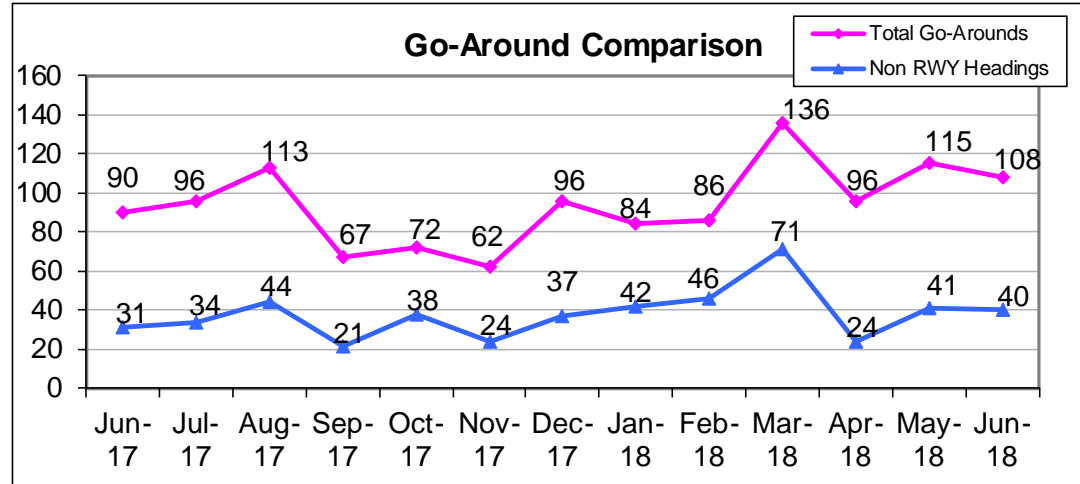
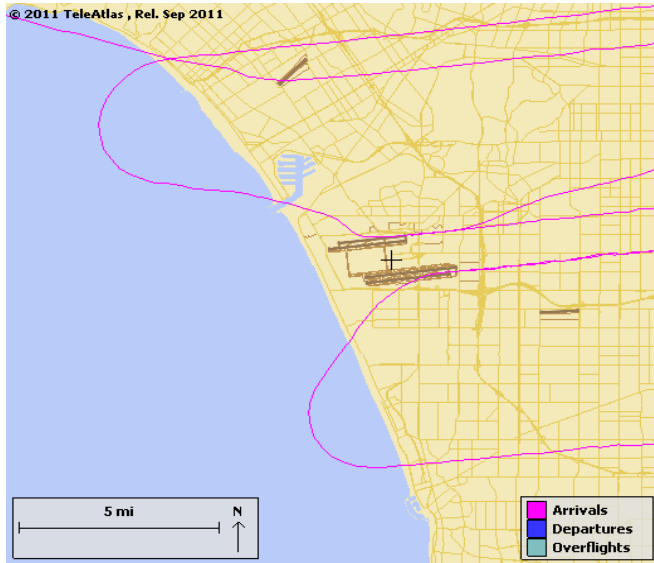


Monitoring pilot or ATC initiated go-arounds or missed approaches



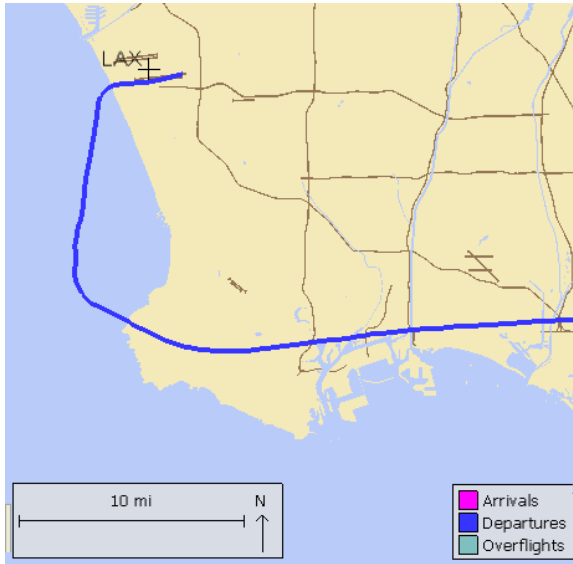
Go-Arounds – Not Maintaining RWY Headings

Example of Go-Arounds not maintaining runway headings

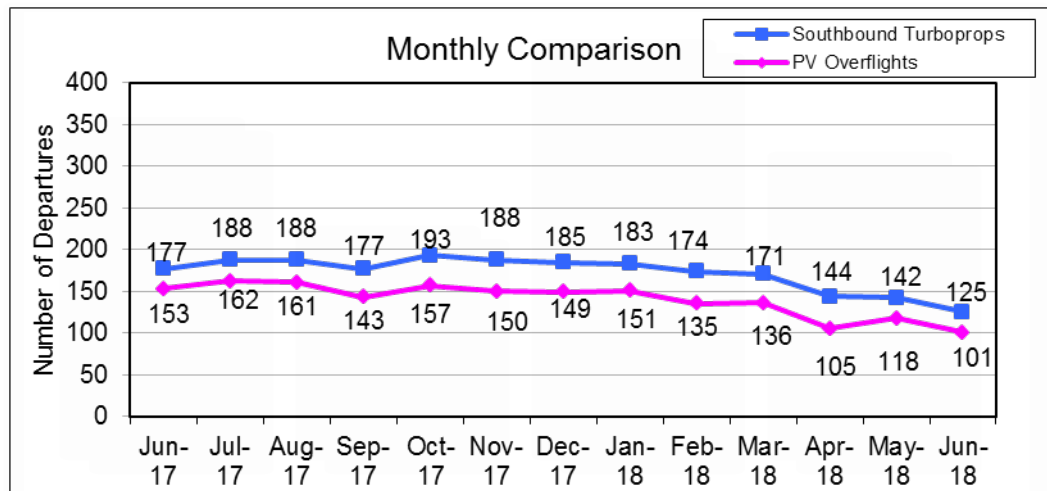
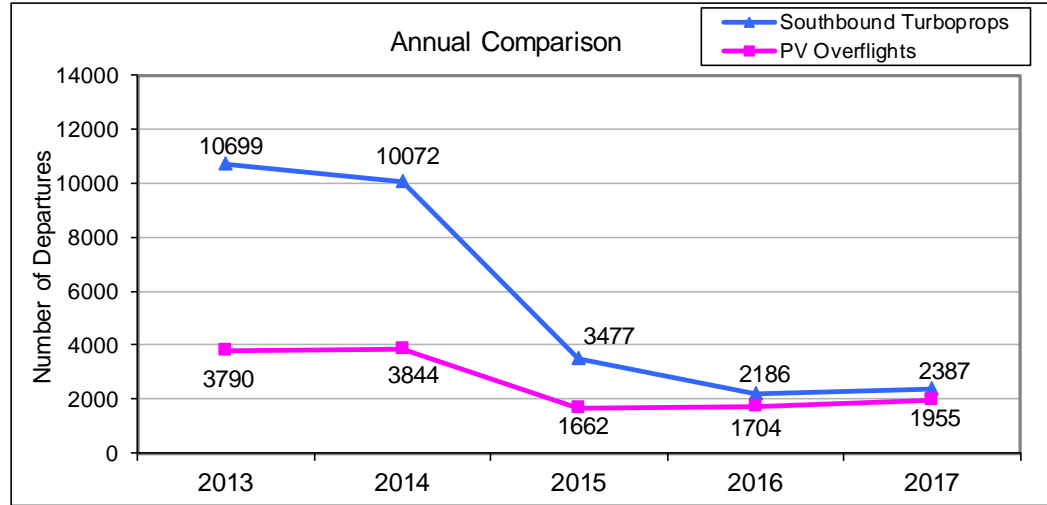


Palos Verdes Peninsula – Turboprop Overflights

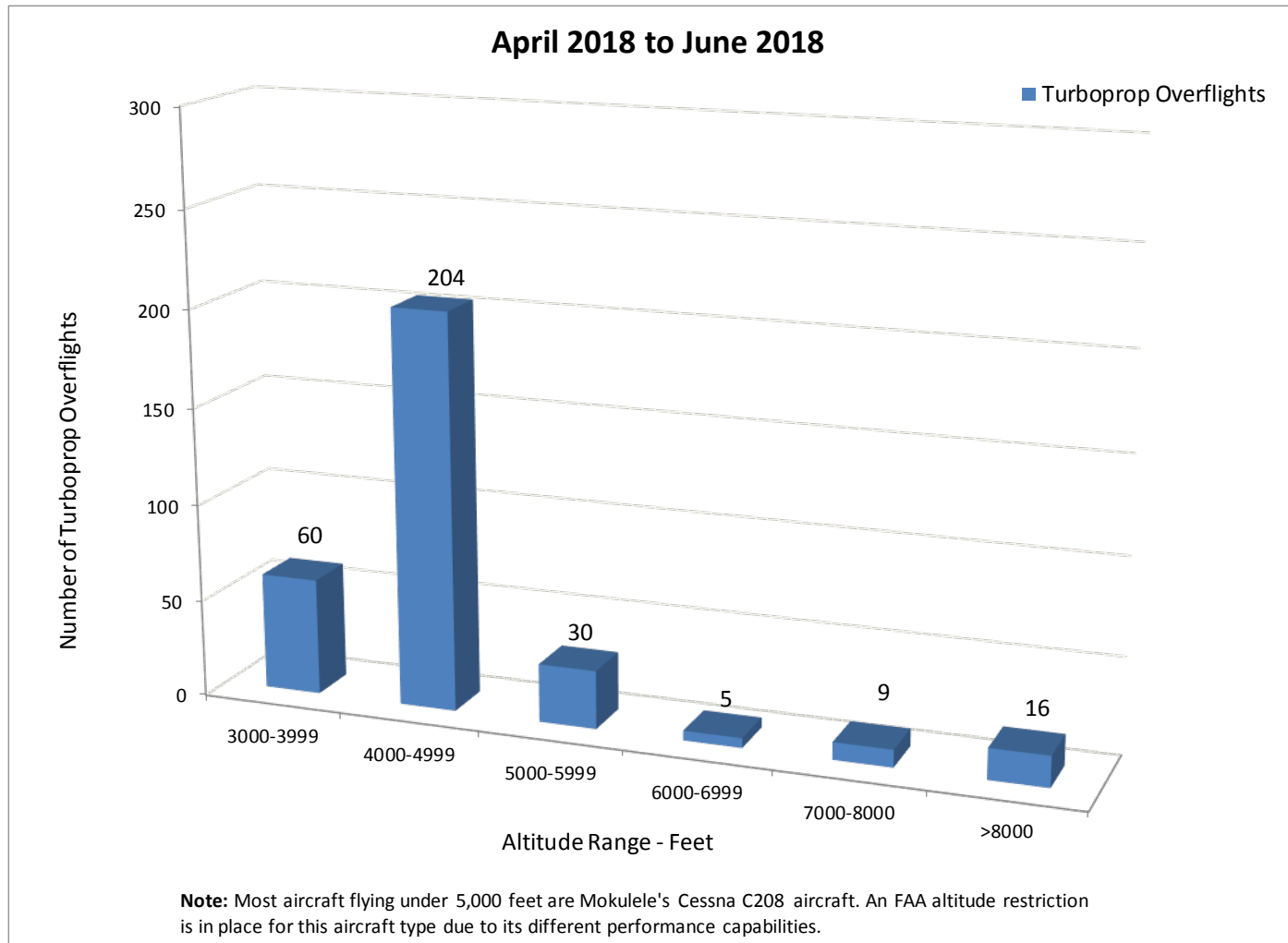
Monitoring southbound turboprops departing from LAX that overfly Peninsula



Note: Prior to SkyWest’s fleet mix change (turboprop to jet) in early 2015, monthly southbound turboprops were ~800 and PV overflights were ~300.

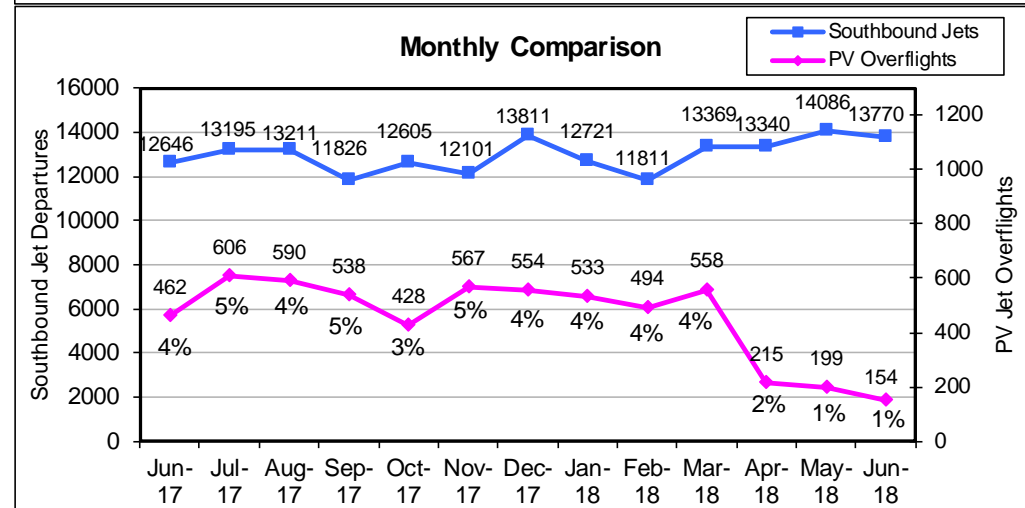
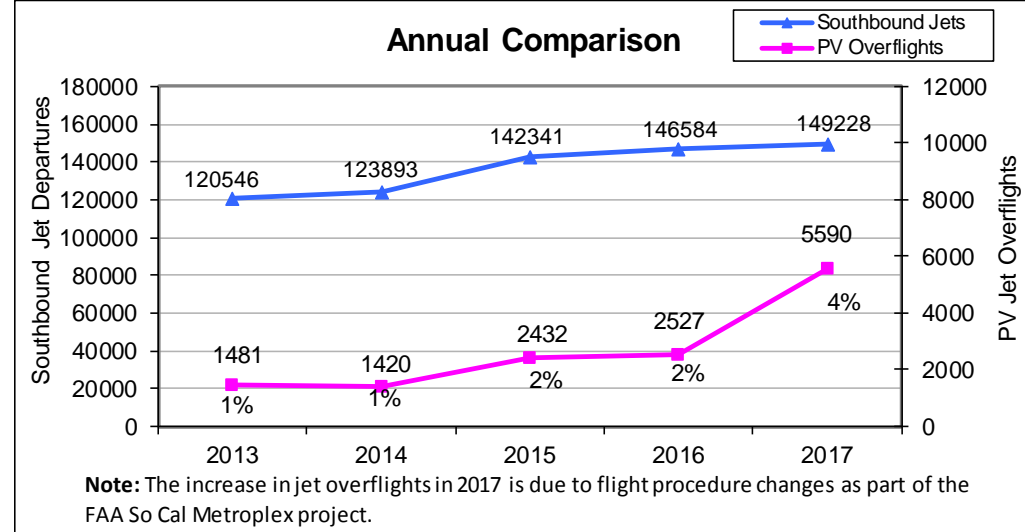
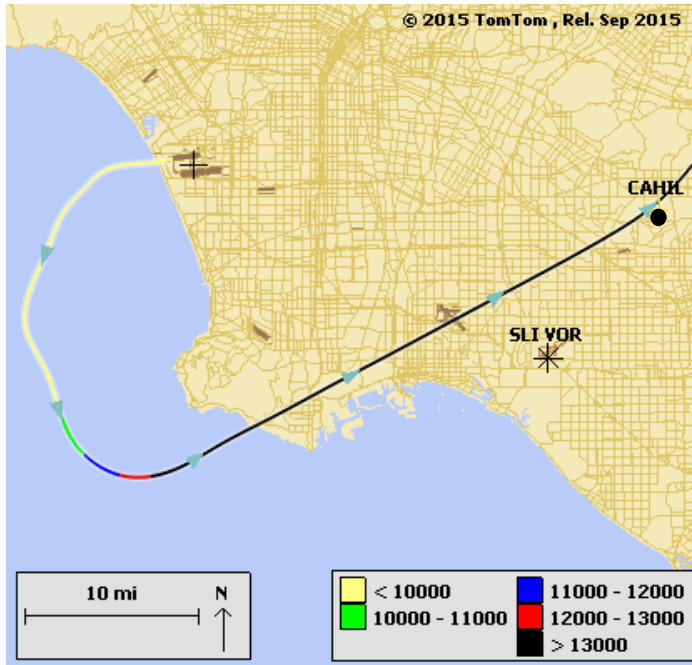


Turboprop Altitudes over PV



Palos Verdes Peninsula – Jet Overflights

Monitoring southbound jets departing from LAX that overfly Peninsula



Jet Altitudes over PV Peninsula

