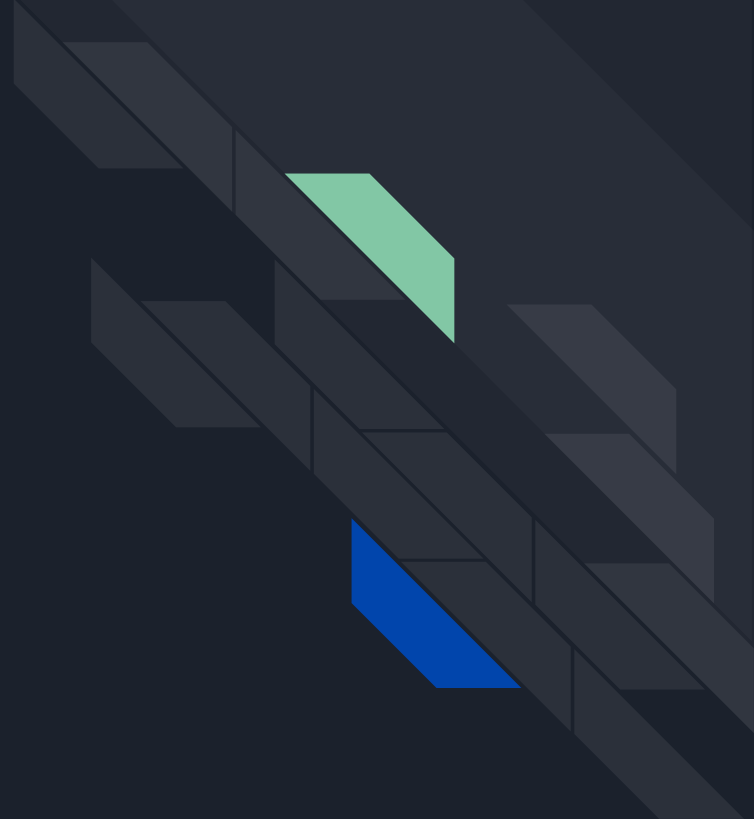


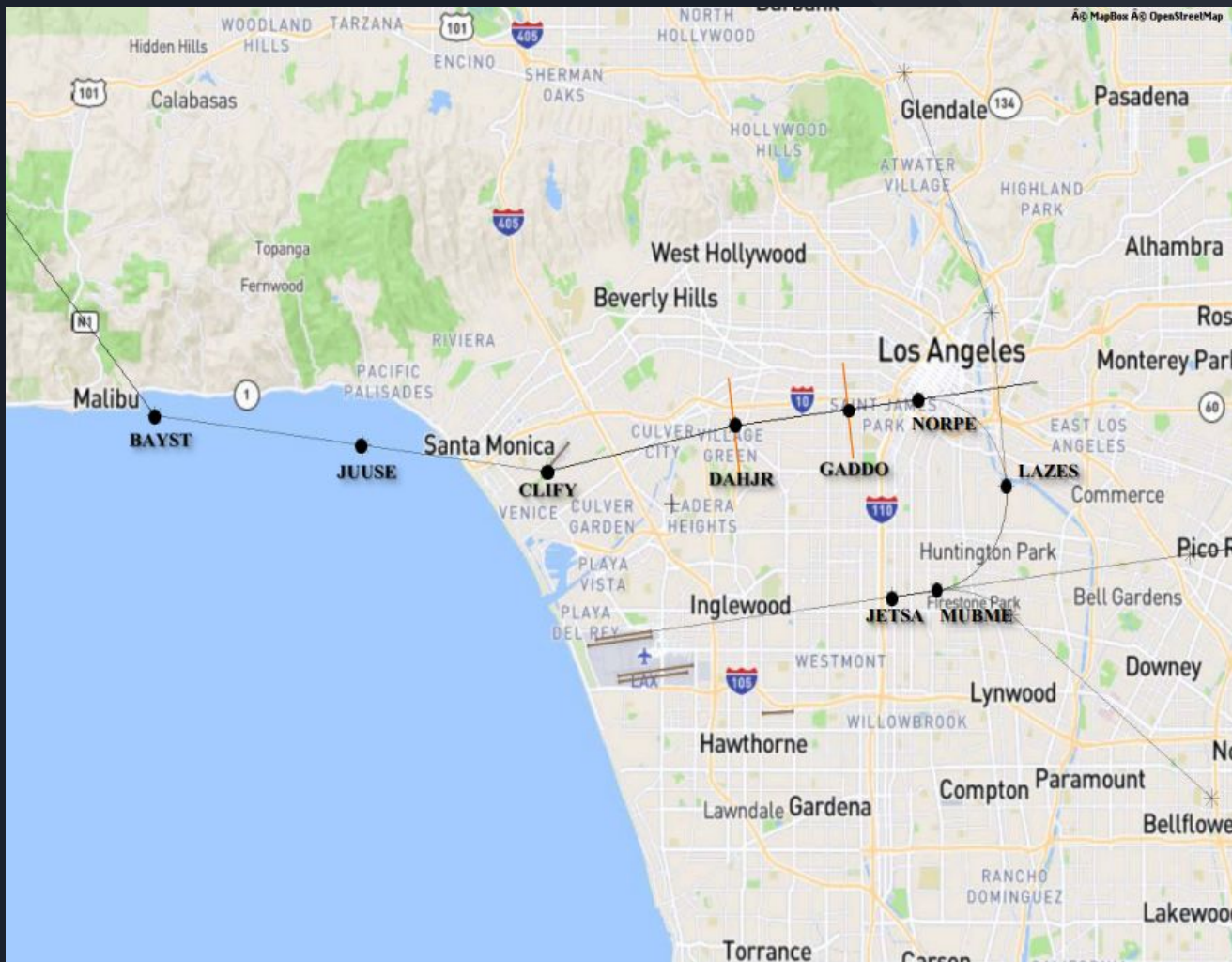


LAX Metroplex / Wide Area Ad Hoc Committee

Sept 2018 LAX Noise Roundtable

1. DAHJR Flight Data
2. Sept 5 Meeting FAA Commitments
3. CVFP Status Update





North Downwind Arrival Flight Paths



1. 6000 Foot Alt +/- 300 at DAHJR

March 1-31, 2018

Altitude MSL (ft)	Count of Ops*	% of Ops	% of Ops Between Altitudes
>6300	902	9.7%	65.0%
6000-6299	2346	25.2%	
5700-5999	2817	30.2%	
5500-5699	1034	11.1%	35.0%
5000-5499	1474	15.8%	
4500-4999	554	5.9%	
4000-4499	139	1.5%	
3500-3999	49	0.5%	
3000-3499	10	0.1%	
2500-2999	3	0.0%	
<2500	0	0.0%	
Grand Total	9328	100%	

April 1-30, 2018

Altitude MSL (ft)	Count of Ops*	% of Ops	% of Ops Between Altitudes
>6300	782	8.5%	64.1%
6000-6299	2371	25.8%	
5700-5999	2739	29.8%	
5500-5699	1156	12.6%	35.9%
5000-5499	1504	16.4%	
4500-4999	478	5.2%	
4000-4499	126	1.4%	
3500-3999	28	0.3%	
3000-3499	9	0.1%	
2500-2999	4	0.0%	
<2500	0	0.0%	
Grand Total	9197	100%	

ANOMS Gate Penetration - DAHJR May 1-23, 2018

Altitude MSL (ft)	Count of Ops*	% of Ops	% of Ops Between Altitudes
>6300	500	6.8%	66.5%
6000-6299	2114	28.7%	
5700-5999	2294	31.1%	
5500-5699	894	12.1%	33.5%
5000-5499	1130	15.3%	
4500-4999	332	4.5%	
4000-4499	83	1.1%	
3500-3999	22	0.3%	
3000-3499	7	0.1%	
2500-2999	0	0.0%	
<2500	0	0.0%	
Grand Total	7376	100%	

Prepared by: LAWA Noise Management
*Data source: LAX ANOMS

ANOMS Gate Penetration - DAHJR May 24-31, 2018

Altitude MSL (ft)	Count of Ops*	% of Ops	% of Ops Between Altitudes
>6300	205	7.8%	67.5%
6000-6299	793	30.2%	
5700-5999	774	29.5%	
5500-5699	293	11.2%	32.5%
5000-5499	390	14.9%	
4500-4999	121	4.6%	
4000-4499	29	1.1%	
3500-3999	15	0.6%	
3000-3499	3	0.1%	
2500-2999	1	0.0%	
<2500	0	0.0%	
Grand Total	2624	100%	

Prepared by: LAWA Noise Management
*Data source: LAX ANOMS

ANOMS Gate Penetration - DAHJR Jun 1-30, 2018

Altitude MSL (ft)	Count of Ops*	% of Ops	% of Ops Between Altitudes
>6300	794	8.1%	65.1%
6000-6299	2628	26.8%	
5700-5999	2959	30.2%	
5500-5699	1258	12.8%	34.9%
5000-5499	1536	15.7%	
4500-4999	480	4.9%	
4000-4499	111	1.1%	
3500-3999	24	0.2%	
3000-3499	9	0.1%	
2500-2999	0	0.0%	
<2500	0	0.0%	
Grand Total	9799	100%	

Prepared by: LAWA Noise Management
*Data source: LAX ANOMS

ANOMS Gate Penetration - DAHJR July 1-31, 2018

Altitude MSL (ft)	Count of Ops*	% of Ops	% of Ops Between Altitudes
>6300	590	6.2%	65.1%
6000-6299	2556	26.6%	
5700-5999	3099	32.3%	
5500-5699	1217	12.7%	34.9%
5000-5499	1606	16.7%	
4500-4999	395	4.1%	
4000-4499	102	1.1%	
3500-3999	15	0.2%	
3000-3499	8	0.1%	
2500-2999	1	0.0%	
<2500	2	0.0%	
Grand Total	9591	100%	

Prepared by: LAWA Noise Management
*Data source: LAX ANOMS

ANOMS Gate Penetration - DAHJR August 1-31, 2018

Altitude MSL (ft)	Count of Ops*	% of Ops	% of Ops Between Altitudes
>6300	829	8.2%	67.4%
6000-6299	2767	27.5%	
5700-5999	3186	31.7%	
5500-5699	1292	12.8%	32.6%
5000-5499	1491	14.8%	
4500-4999	403	4.0%	
4000-4499	68	0.7%	
3500-3999	25	0.2%	
3000-3499	4	0.0%	
2500-2999	0	0.0%	
<2500	0	0.0%	
Grand Total	10065	100%	

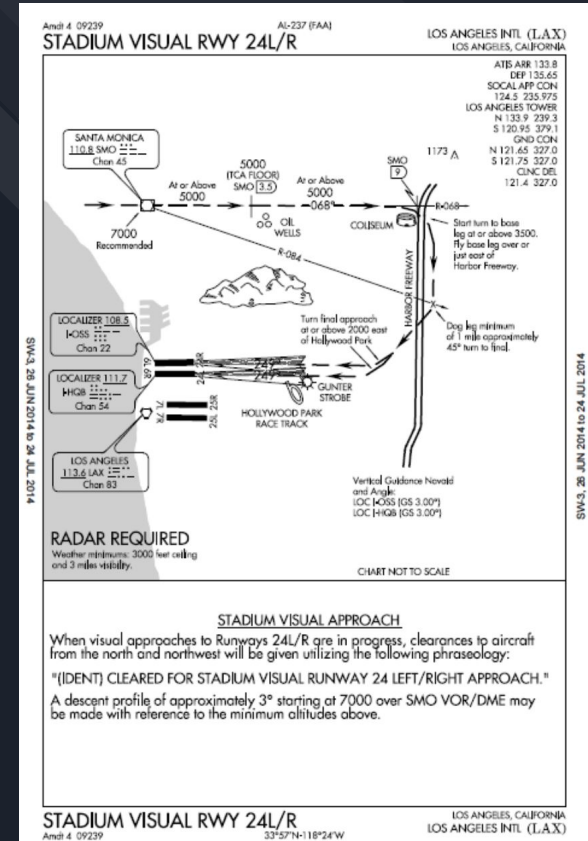
Prepared by: LAWA Noise Management
*Data source: LAX ANOMS

2. Sept 5 Meeting FAA Commitments

- As of August 30, all flights are assigned a minimum height of 5000 feet or above at DAHJR, per previous communications here
- In lead ups to the Sept 5 meeting, Geoff Thompson communicated the resistance folks in the RT and general community expressed in having nighttime flights not meet the 6000 foot standard called for in STAR procedures at DAHJR
- FAA has agreed revise the 5000 foot guidance to 6000 between 0100 and 0500 (AM) hours
- FAA also hand delivered SOPs to the RT after previously mentioned FOIA issues
- FAA provided night time data for DAHJR flights from 12 to 6
- Ad Hoc expressed wish for additional analysis with an eventual goal to extend night time height restrictions beyond 1 to 5

3. CVFPs: What they are, How they can help

- CVFP = Charted Visual Flight Procedures
- Set parameters for Air Traffic Control to bring flights in via visual approach, which many LA inbound flights still are
- Still in place in some areas that have implemented Metroplex
- LAX had CVFPs for North Arrivals until March 2015.
- Old LAX CVFPs set 5000 foot Min Alt near where DAHJR is today



3. CVFPs: LAWA working with FAA

- At the July meeting of the Roundtable held in Culver City, the RT motioned for the Metroplex Ad Hoc committee to request that LAWA work with the FAA to request a new CVFP
- Metroplex Ad Hoc created a draft letter for LAWA to send to the FAA requesting this, that letter has not yet been sent
- LAWA is currently working with FAA on this request investigating viability of a new CVFP