

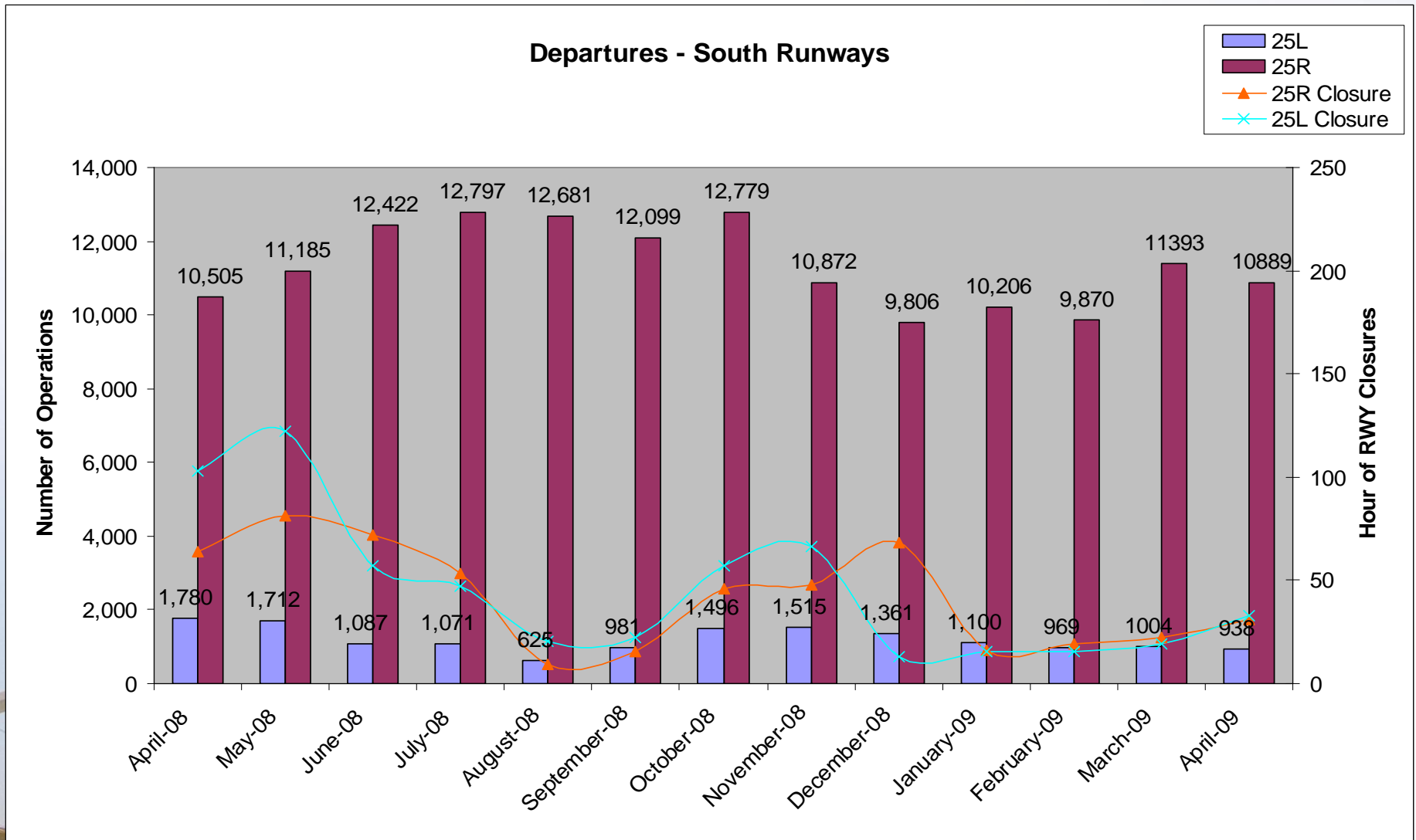


Statistical Update on LAX Runway Utilization

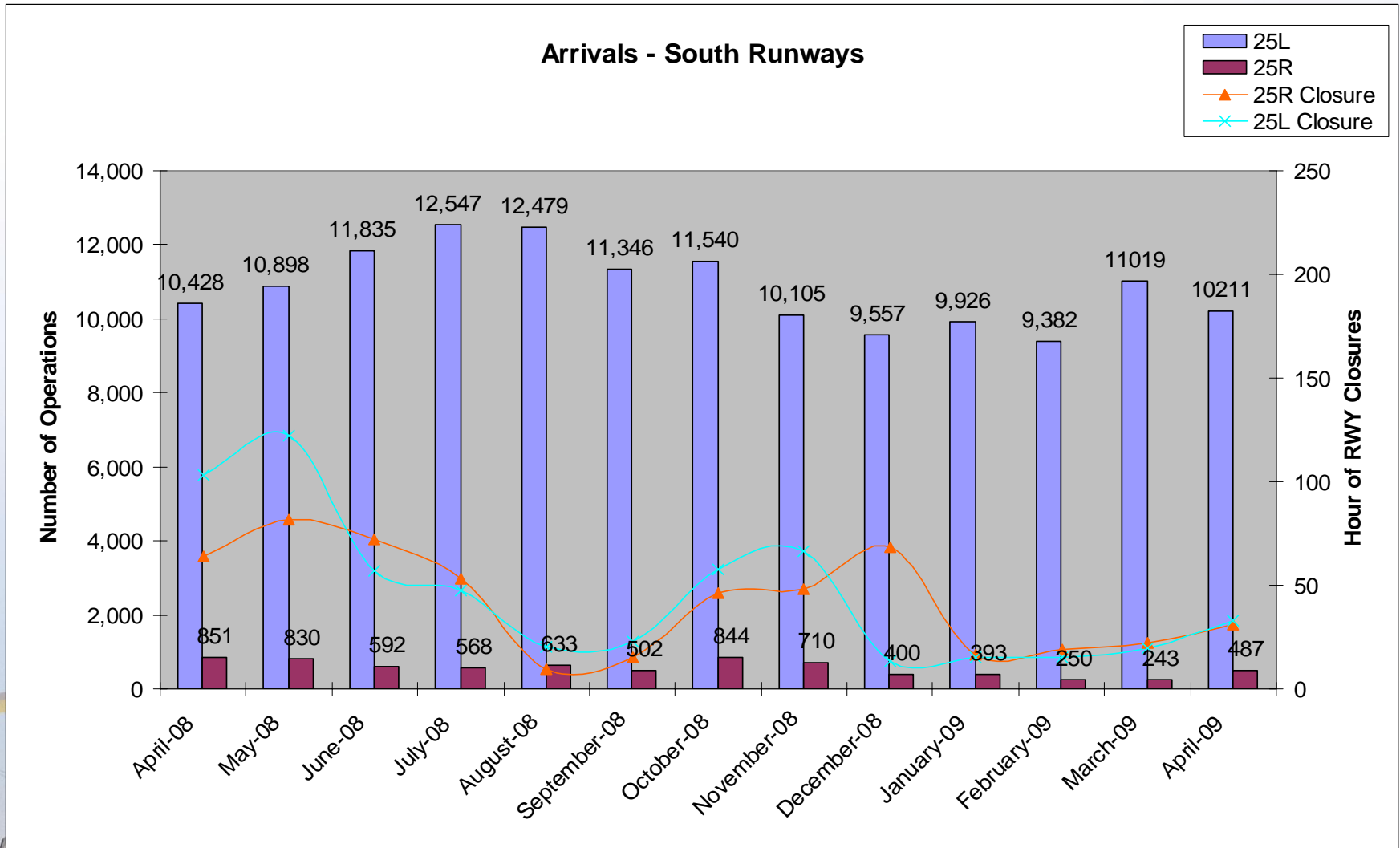
May 13, 2009

LAX/Community Noise Roundtable

Departures – Runways 25L and 25R

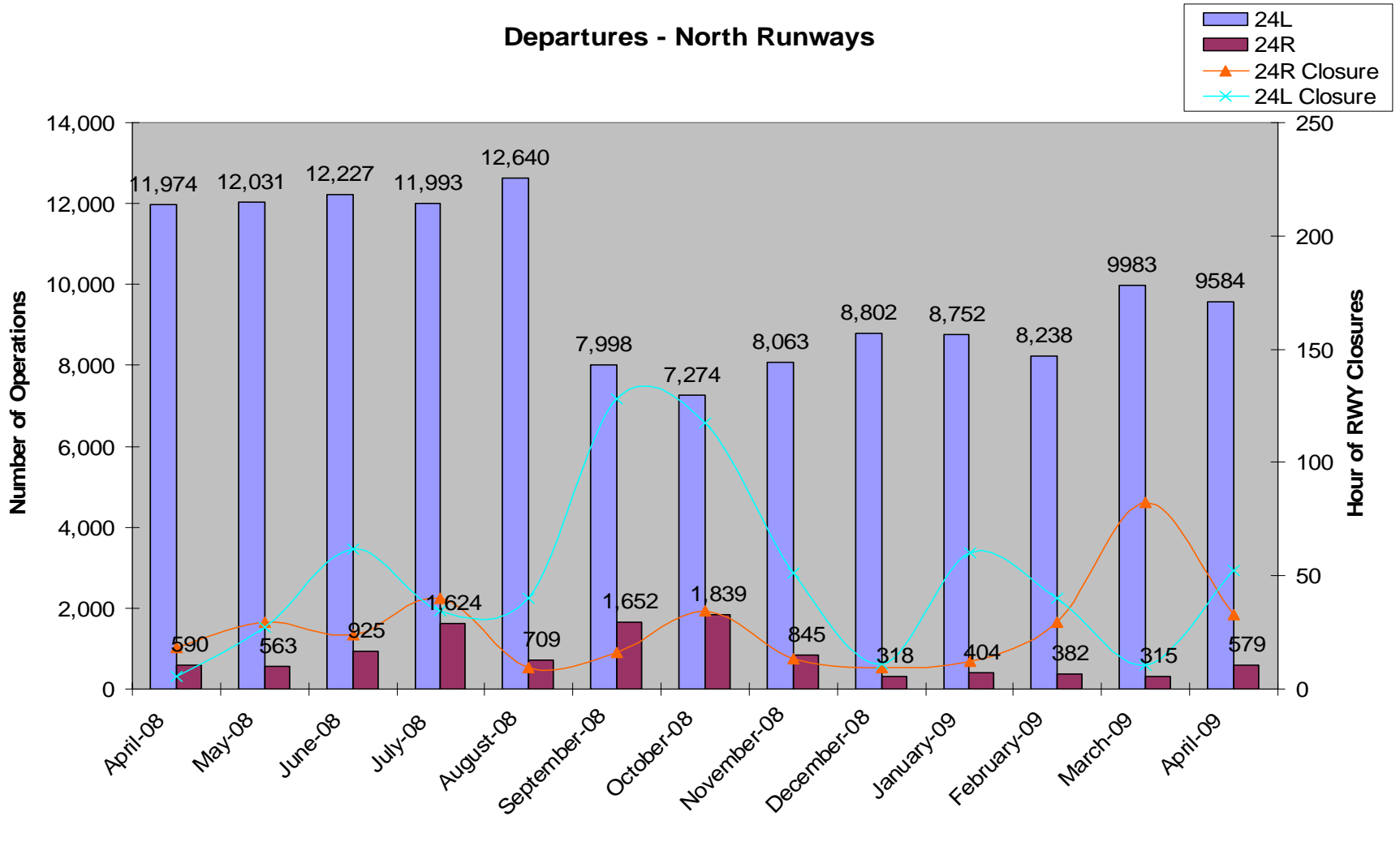


Arrivals – Runways 25L and 25R

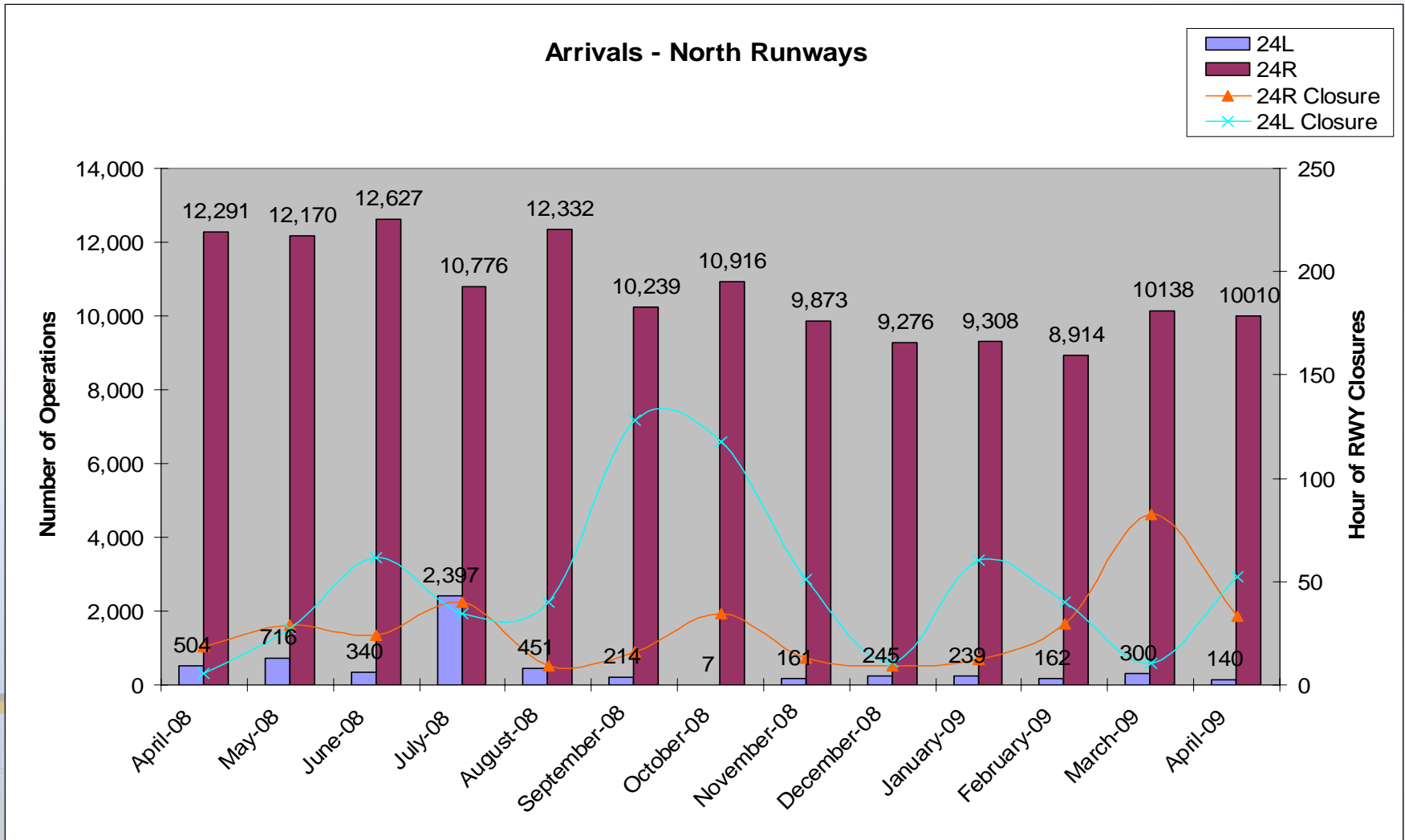


Departures – Runways 24L and 24R

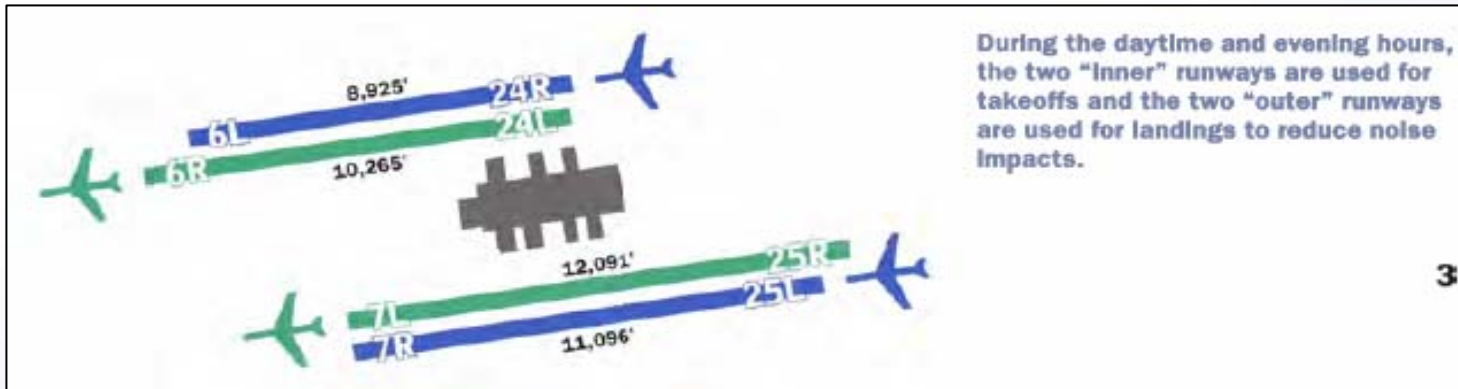
Departures - North Runways



Arrivals – Runways 24L and 24R

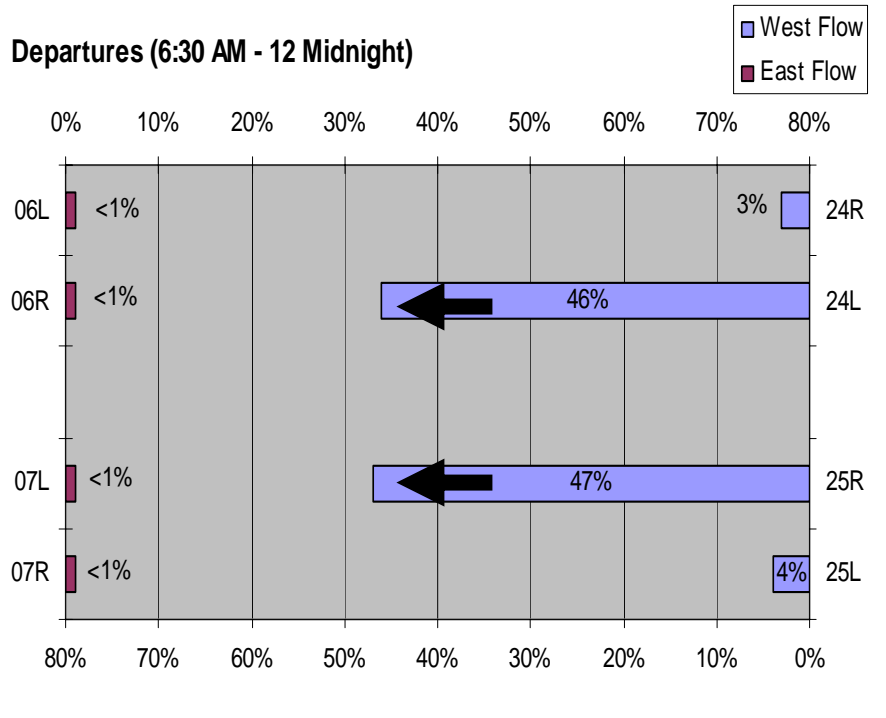


April 2009 – Westerly Operations

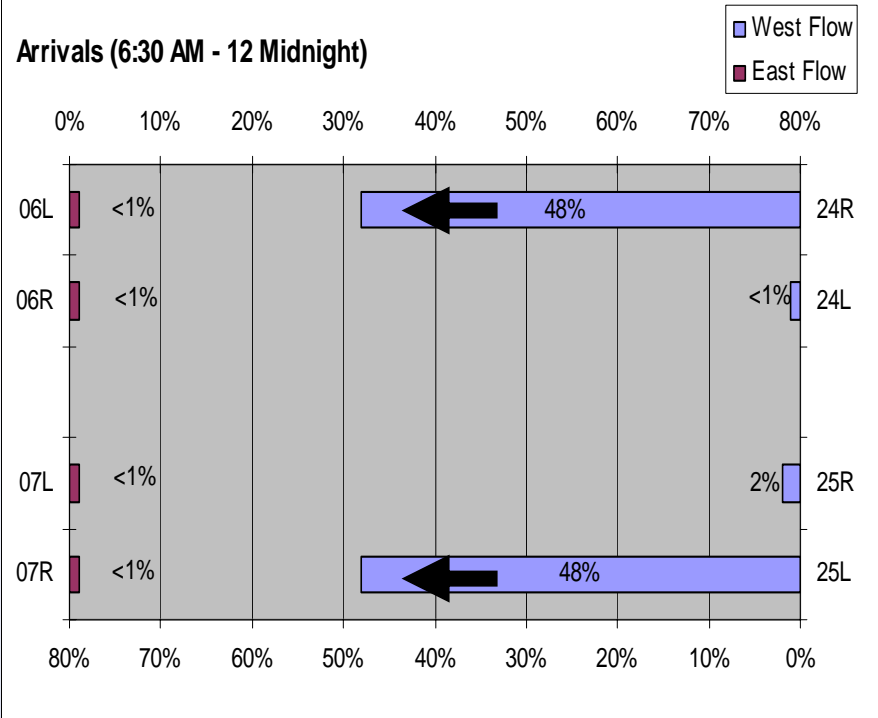


3

Departures (6:30 AM - 12 Midnight)

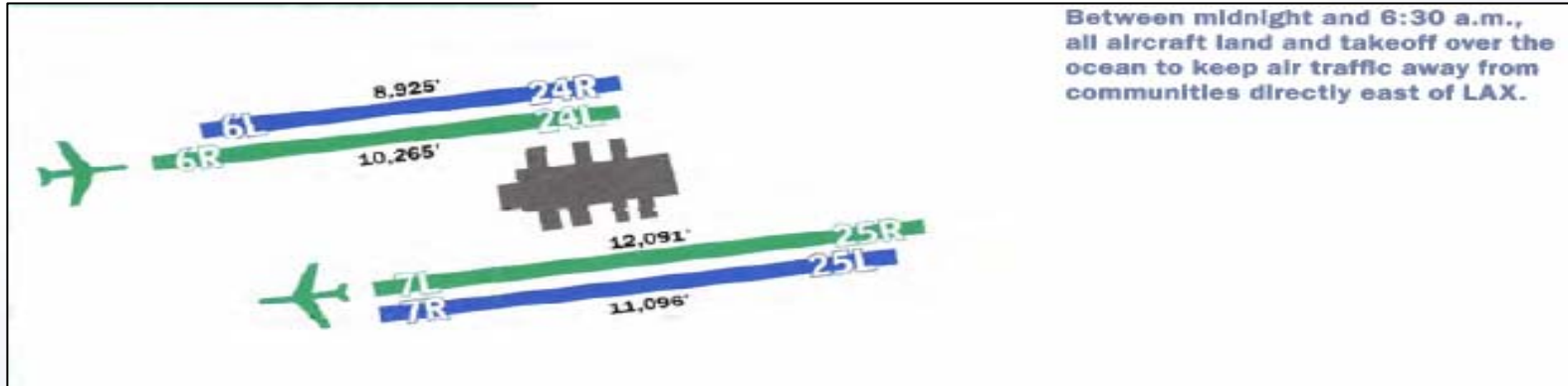


Arrivals (6:30 AM - 12 Midnight)

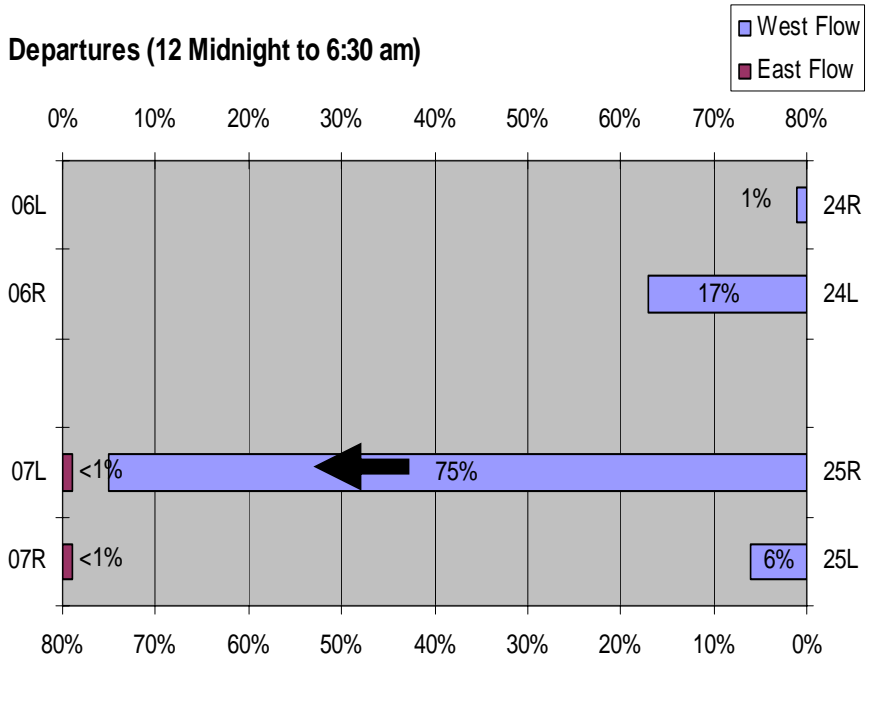


6

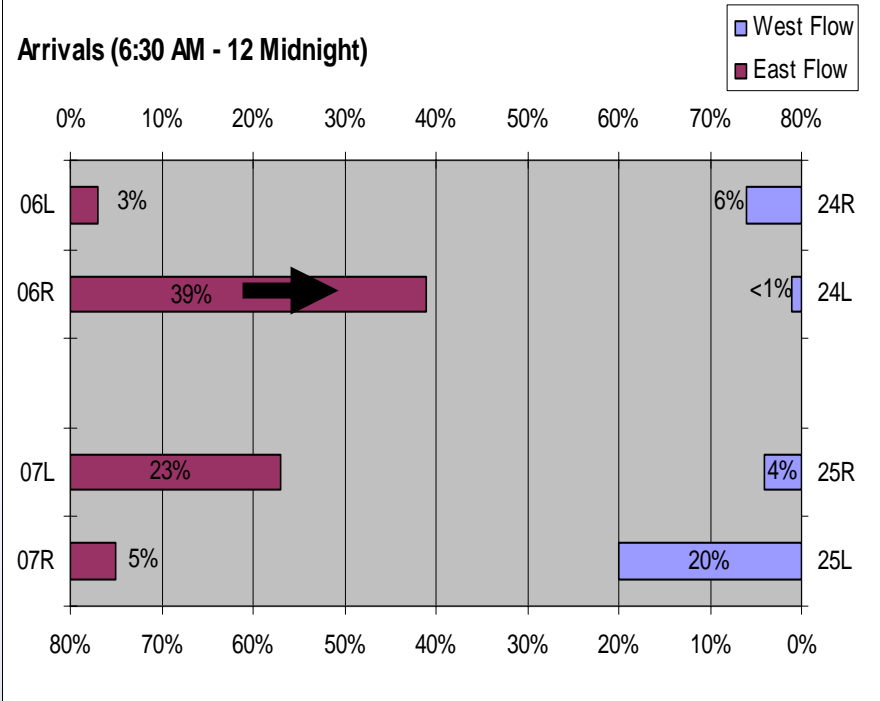
April 209 – Over Ocean Operations



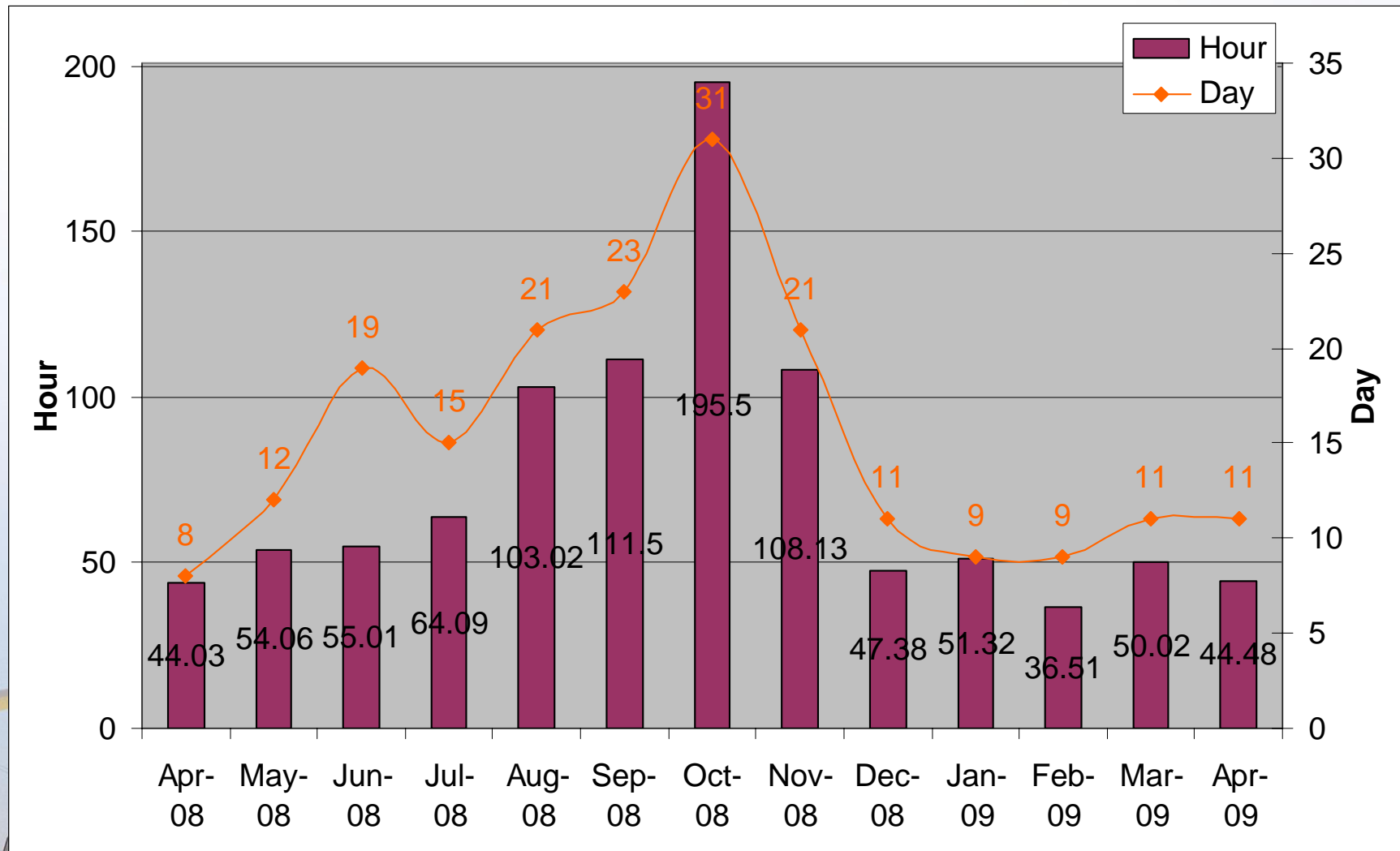
Departures (12 Midnight to 6:30 am)



Arrivals (6:30 AM - 12 Midnight)



Deviation from Over-Ocean Operations



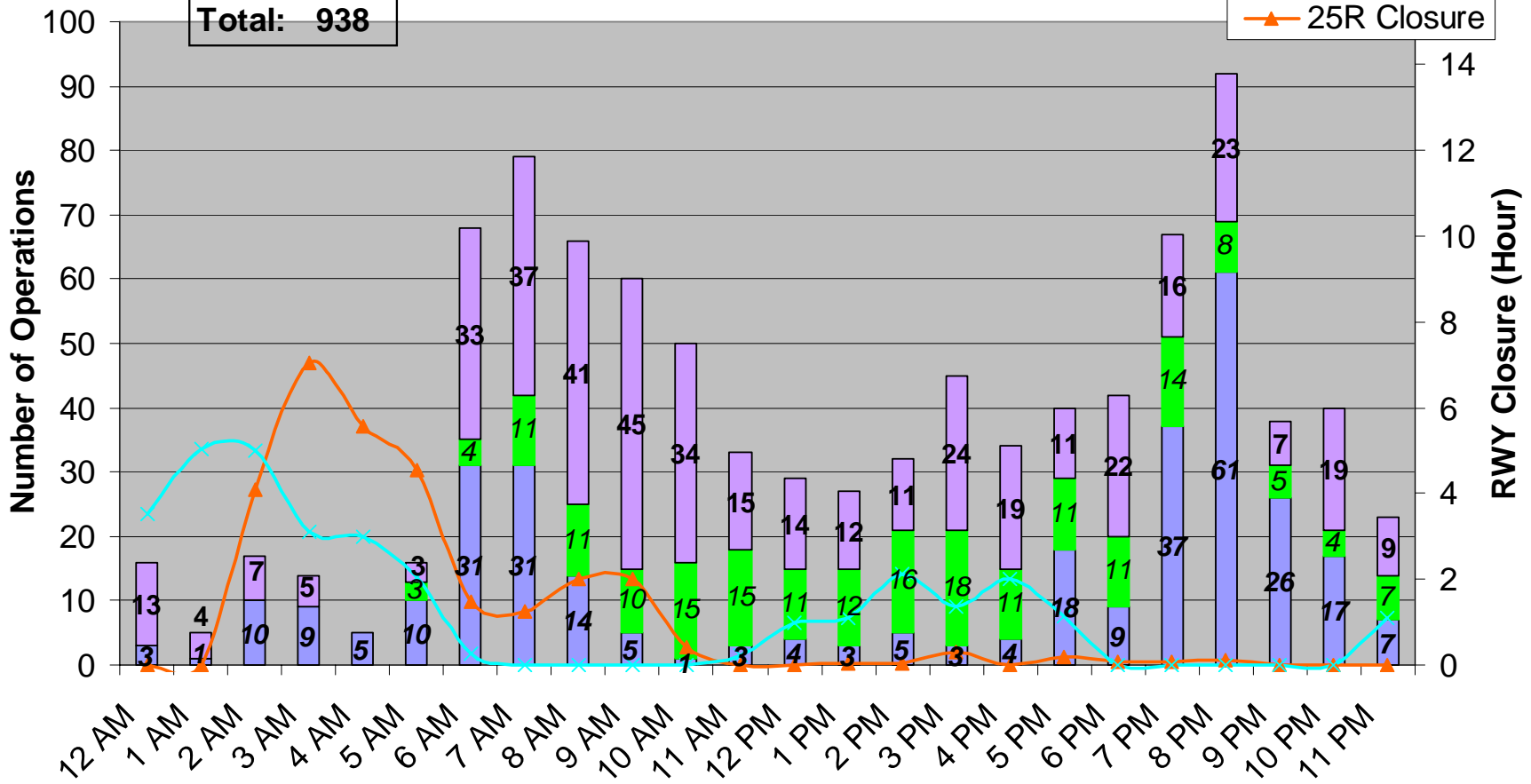
Time of Day by Operator on 25L

April 2009

Departures on 25L

Cargo: 317
 GA: 197
 PAX: 424
 Total: 938

PAX
 GA
 Cargo
 25L Closure
 25R Closure



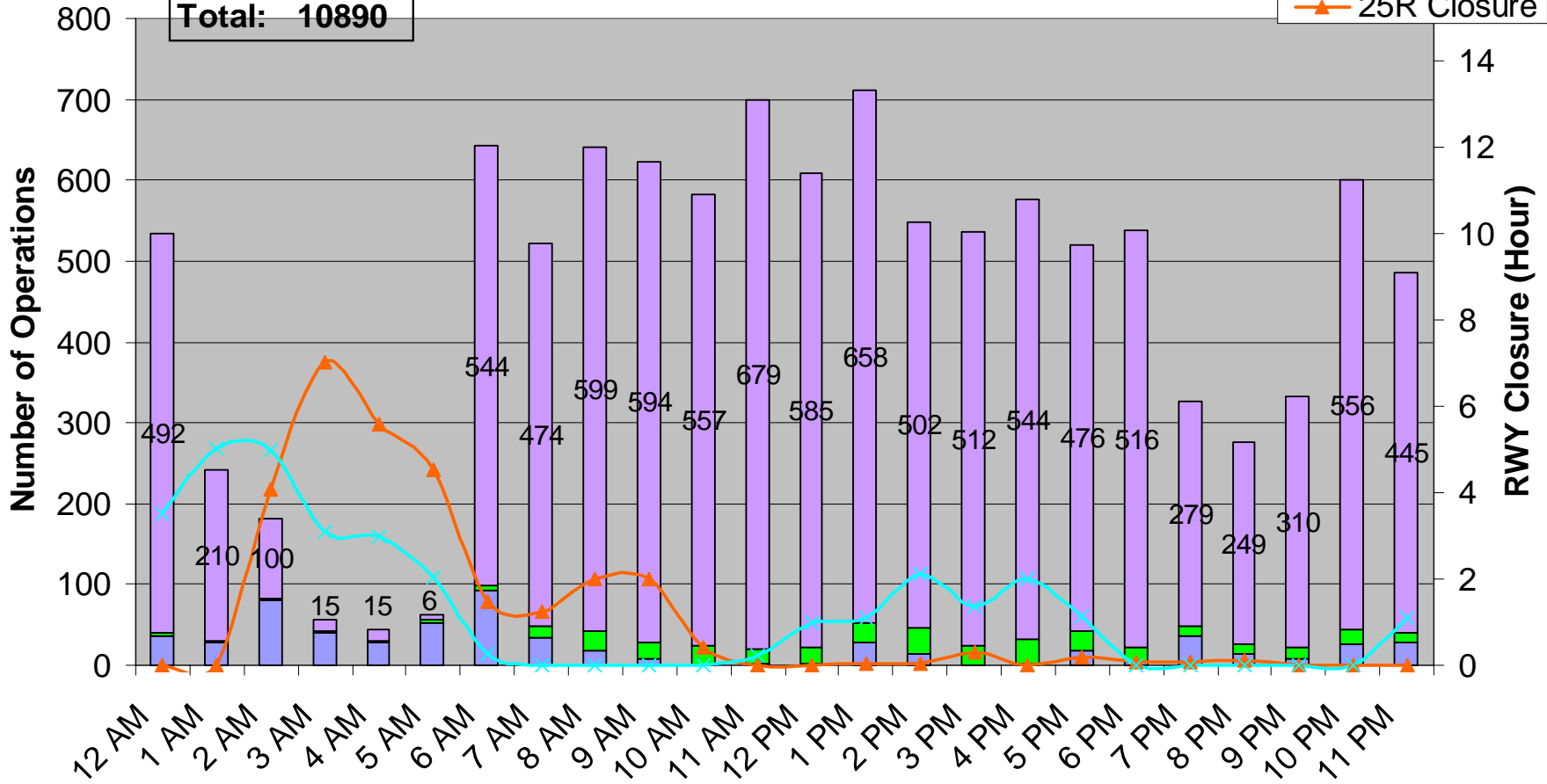
Time of Day by Operator on 25R

April 2009

Departures on 25R

Cargo: 613
GA 360
PAX: 9917
Total: 10890

■ PAX
■ GA
■ Cargo
✕ 25L Closure
▲ 25R Closure



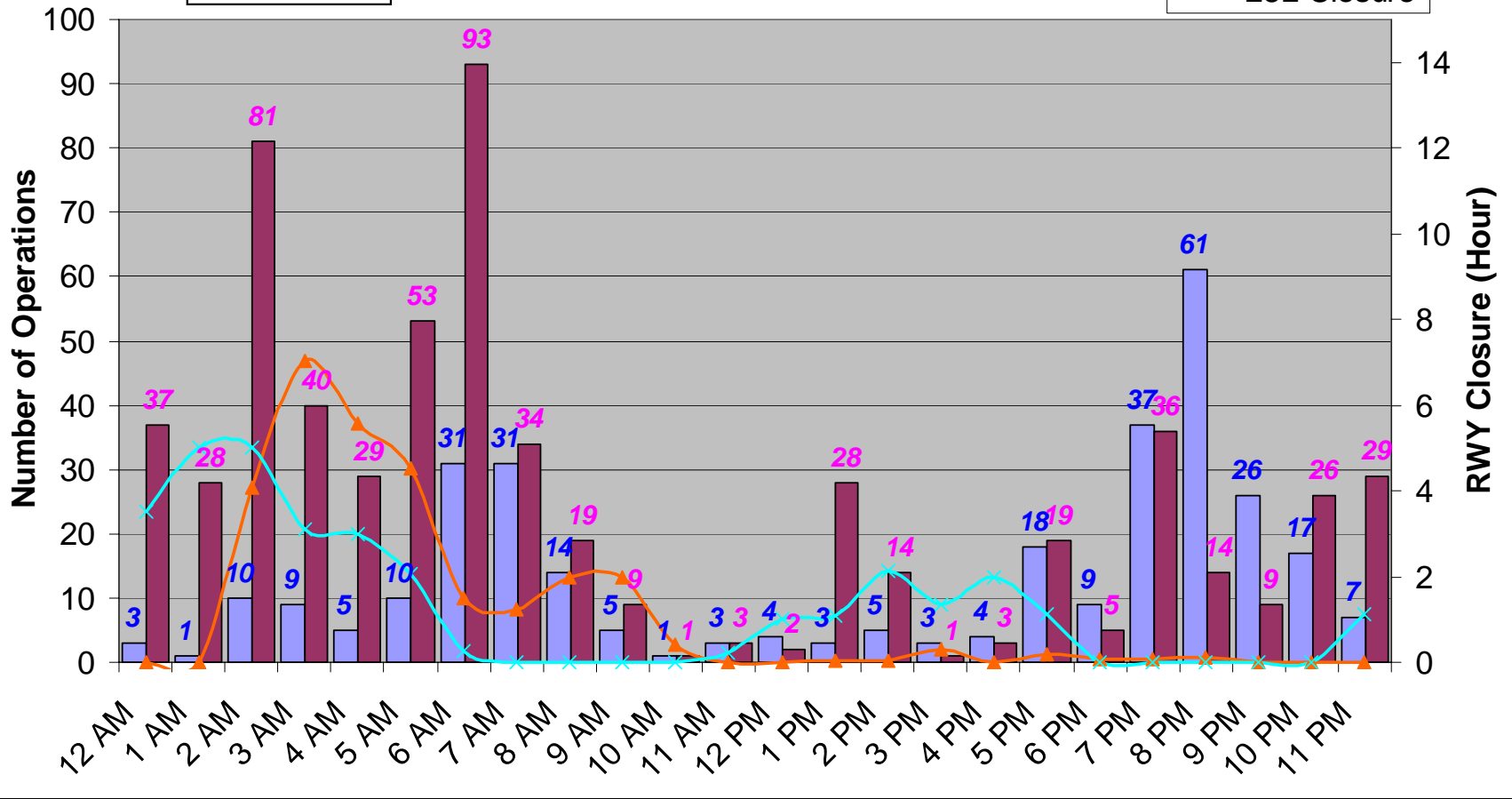
Time of Day – Cargo Only

April 2009

Cargo Departures on 25L & 25R

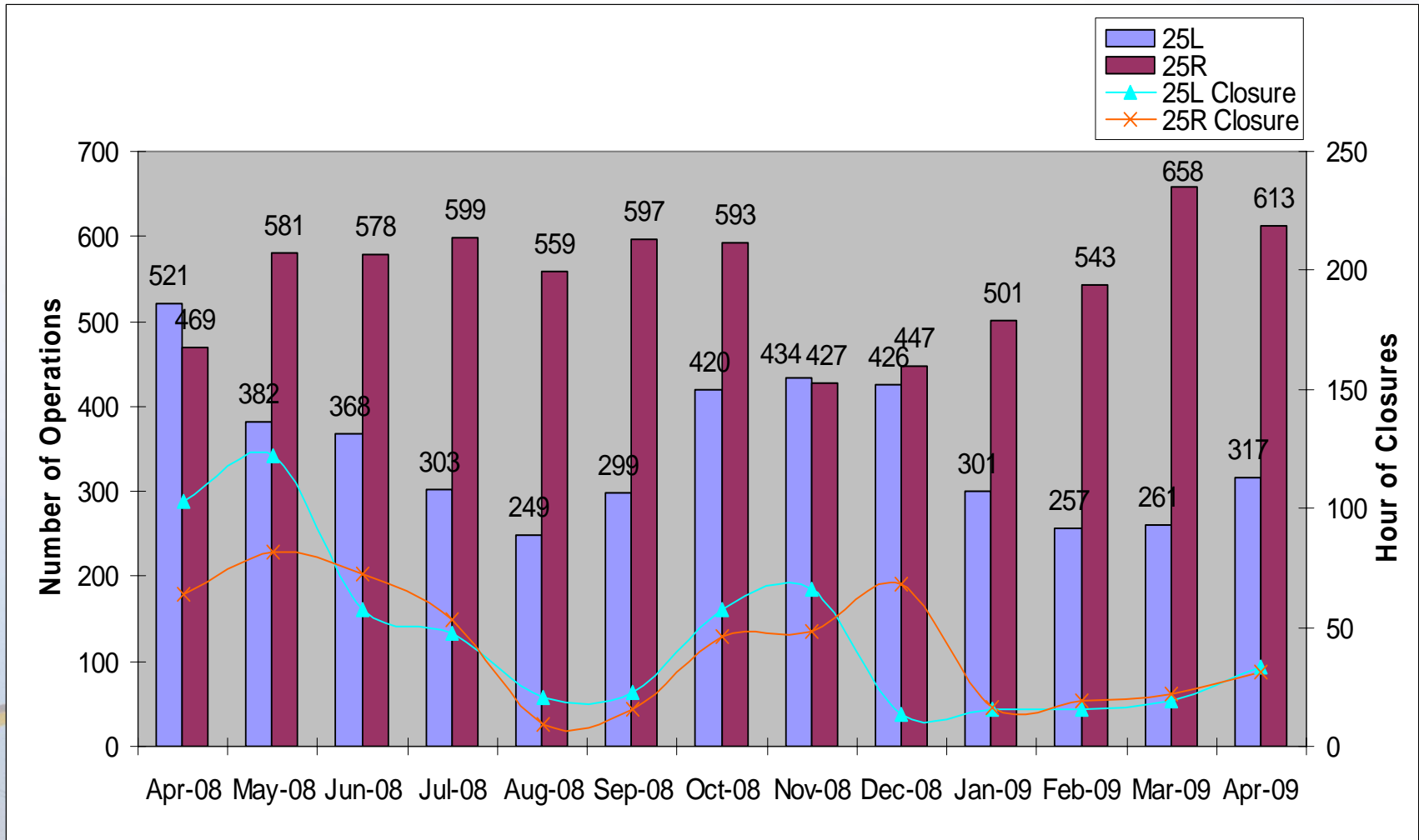
25L: 317
 25R: 613
 Total: 930

25L
 25R
 25R Closure
 25L Closure



Cargo Departures on 25L & 25R

13-month period



Air Cargo Departures on 25L & 25R April 2009

