

LAX Runway Safety Area Program

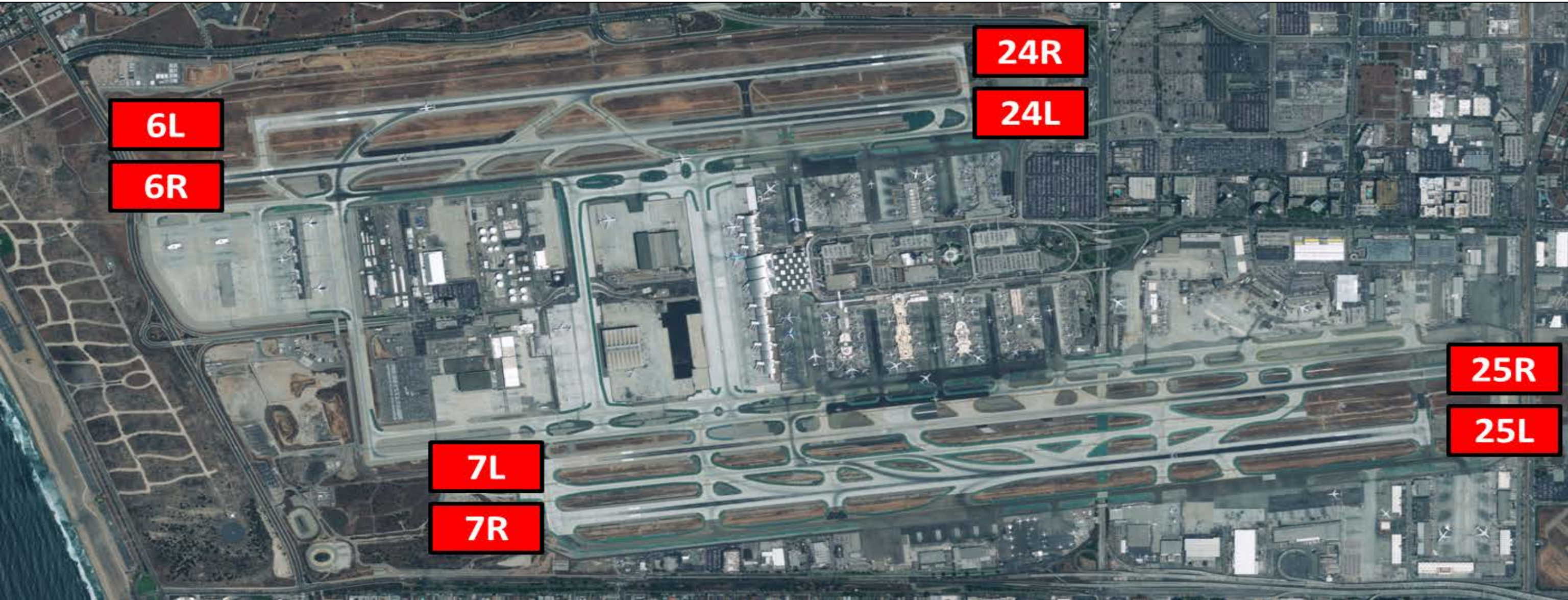


LAX/Community Noise Roundtable

September 9, 2015

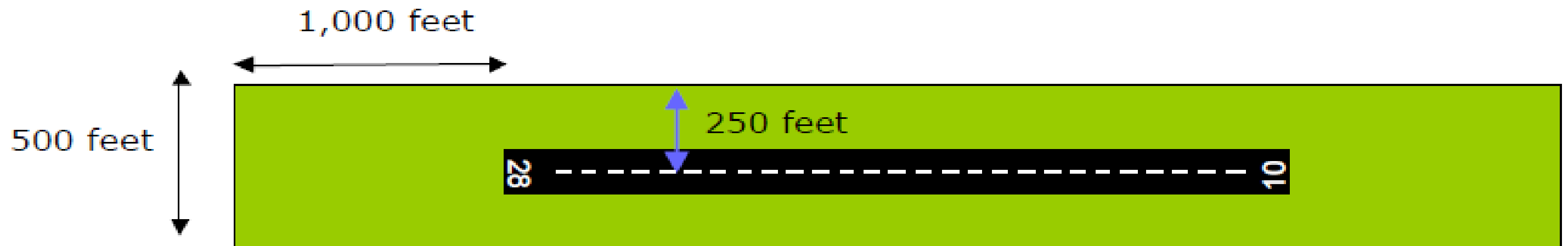
Mark J. Vicelja - PE

LAX Runway Configuration



Runway Safety Areas (RSA)

- Area surrounding a runway that provides critical safety margins for landing and departing aircraft
- Must be kept clear, well drained, and capable of supporting the weight of commercial aircraft
- Must meet dimensional requirements
 - 1,000 feet by 500 feet at each runway end
 - 250 feet from the runway centerline depending on the type of instrument approach procedures and the size and type of aircraft served by the runway
- Provides for greater accessibility for firefighting and rescue equipment should an incident occur at the end of the runway



RSA Surrounding a Runway

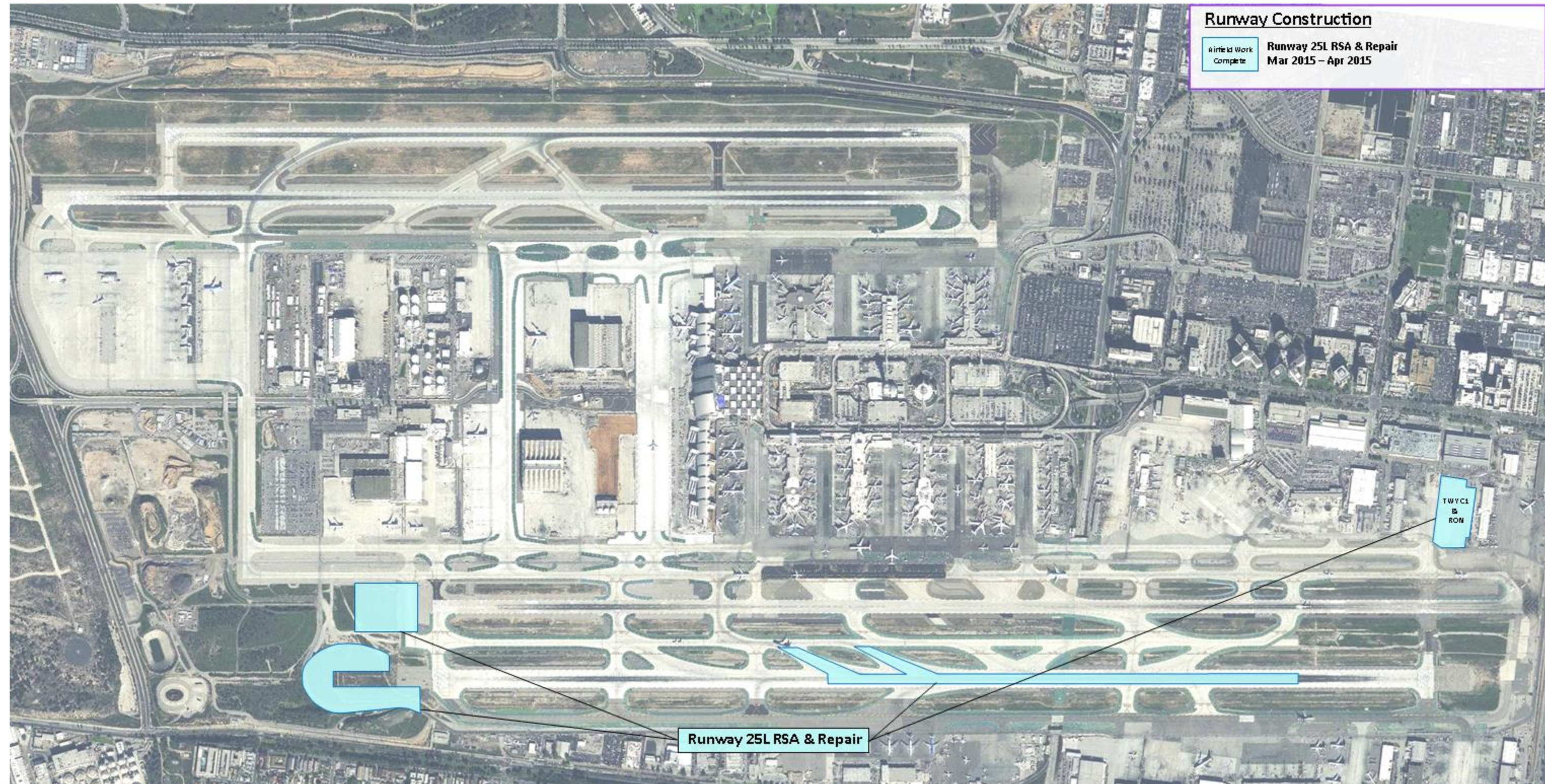
Federal Compliance Requirement

- All commercial service airports must meet the minimum identified RSA standards by improving RSAs no later than 2015.

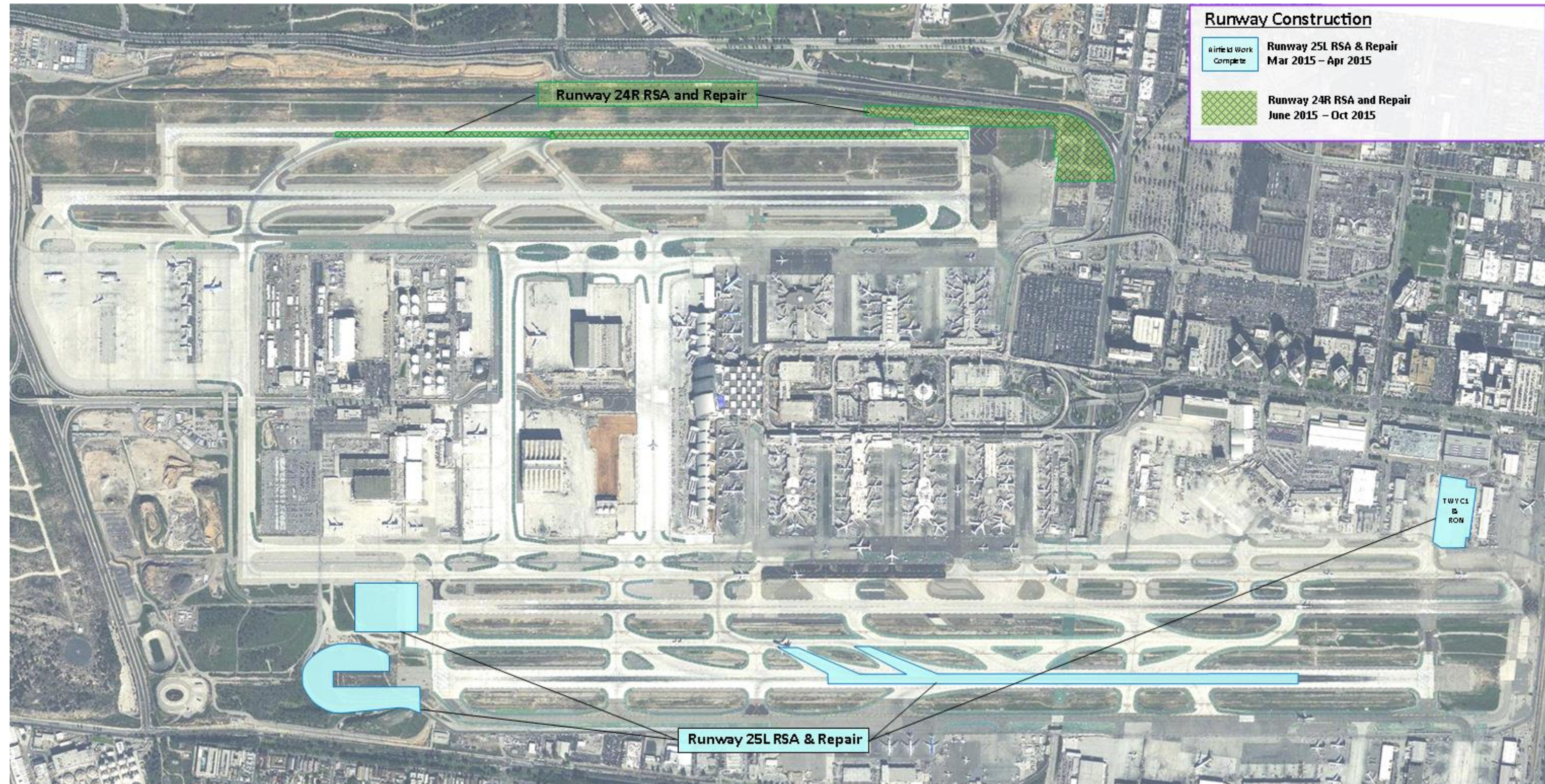
The Runway Safety Area (RSA) program for LAX

- Runway 7R-25L RSA and Temporary Repair - completed
- Runway 6L-24R RSA and Rehabilitation – under construction
- Runway 6R-24L RSA – construction to begin November
- Runway 7L-25R RSA and Rehabilitation – final design

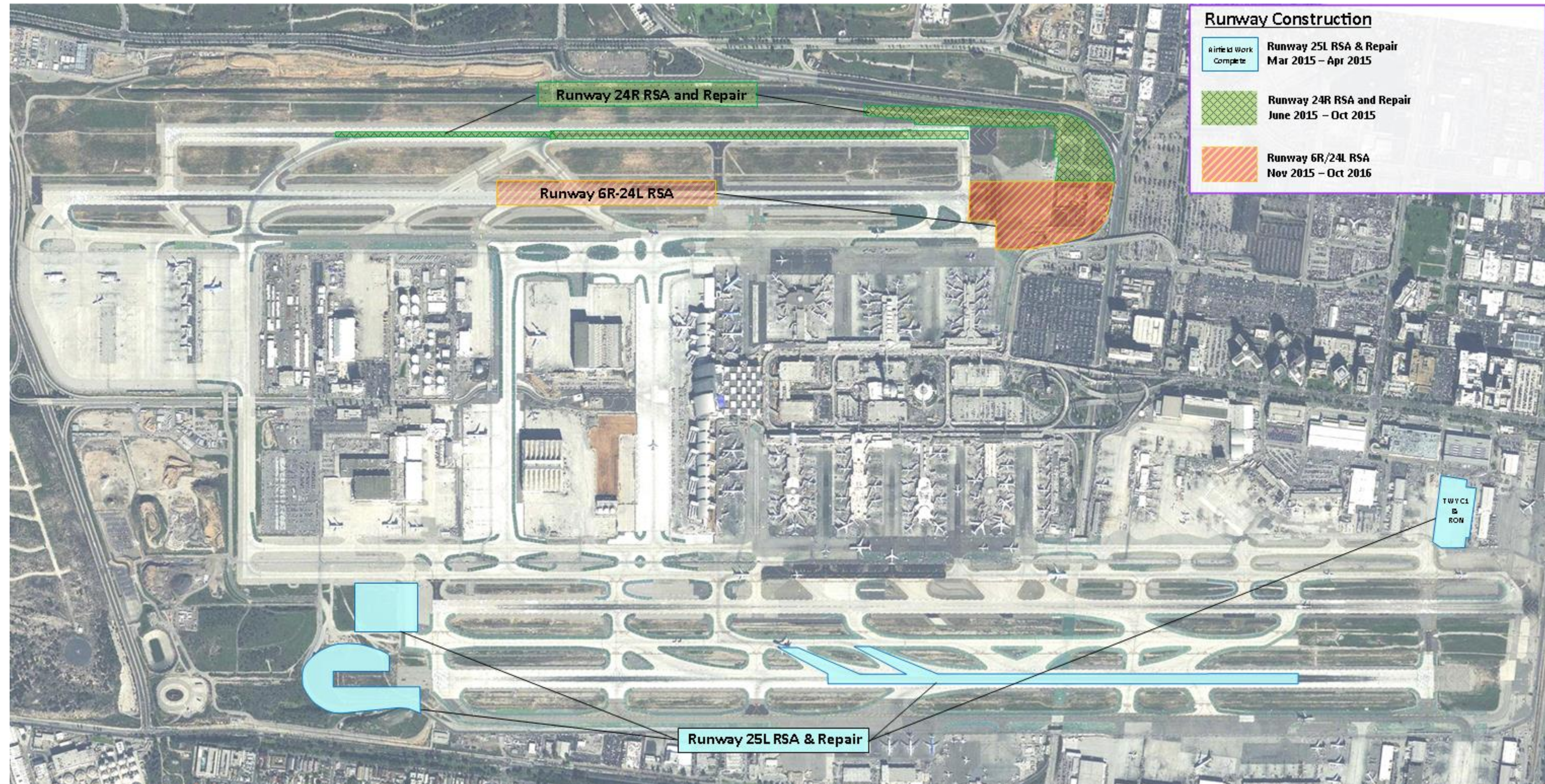
LAX RUNWAY SAFETY AREA PROJECTS (as of September 1, 2015)



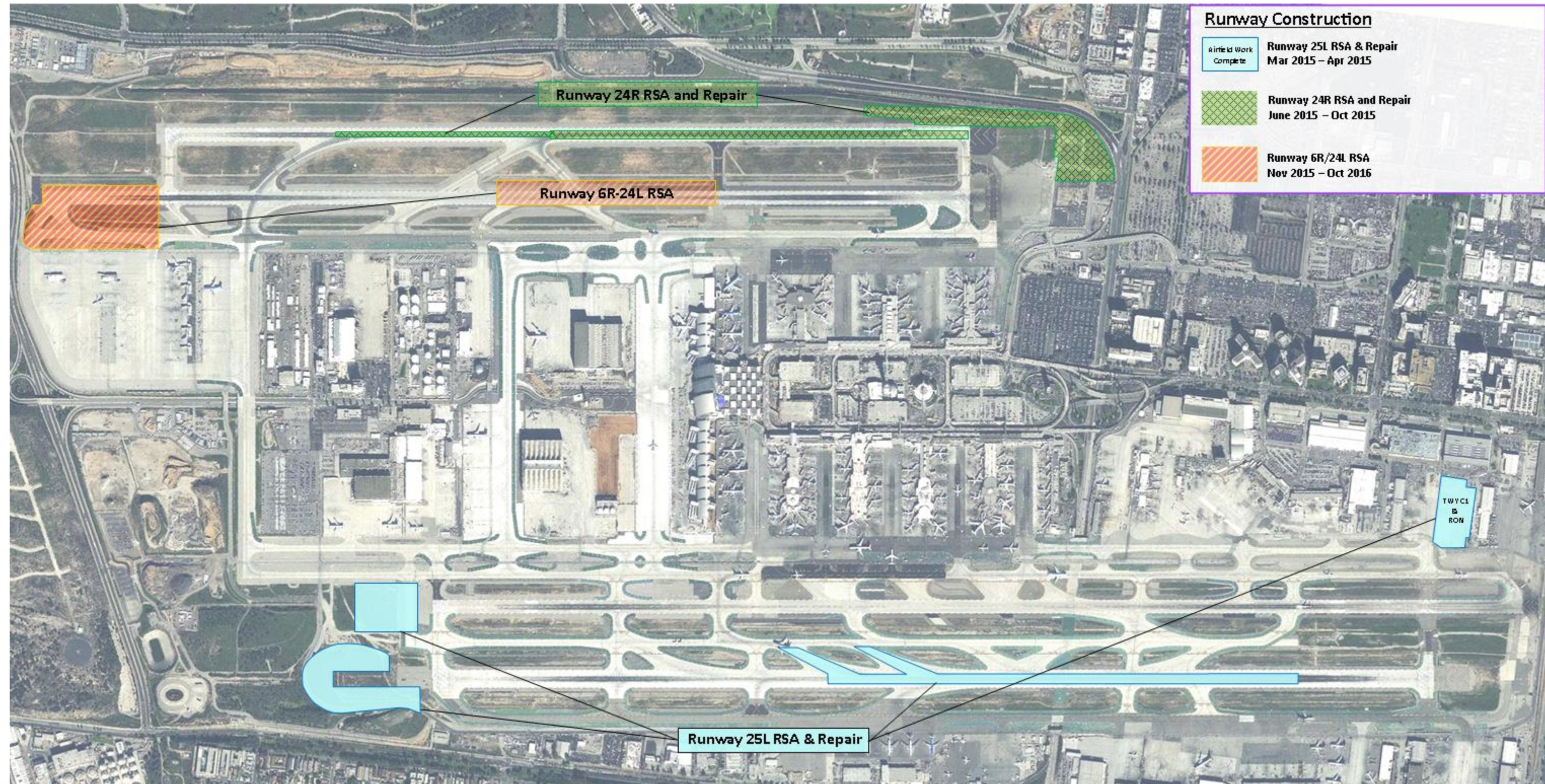
LAX RUNWAY SAFETY AREA PROJECTS (as of September 1, 2015)



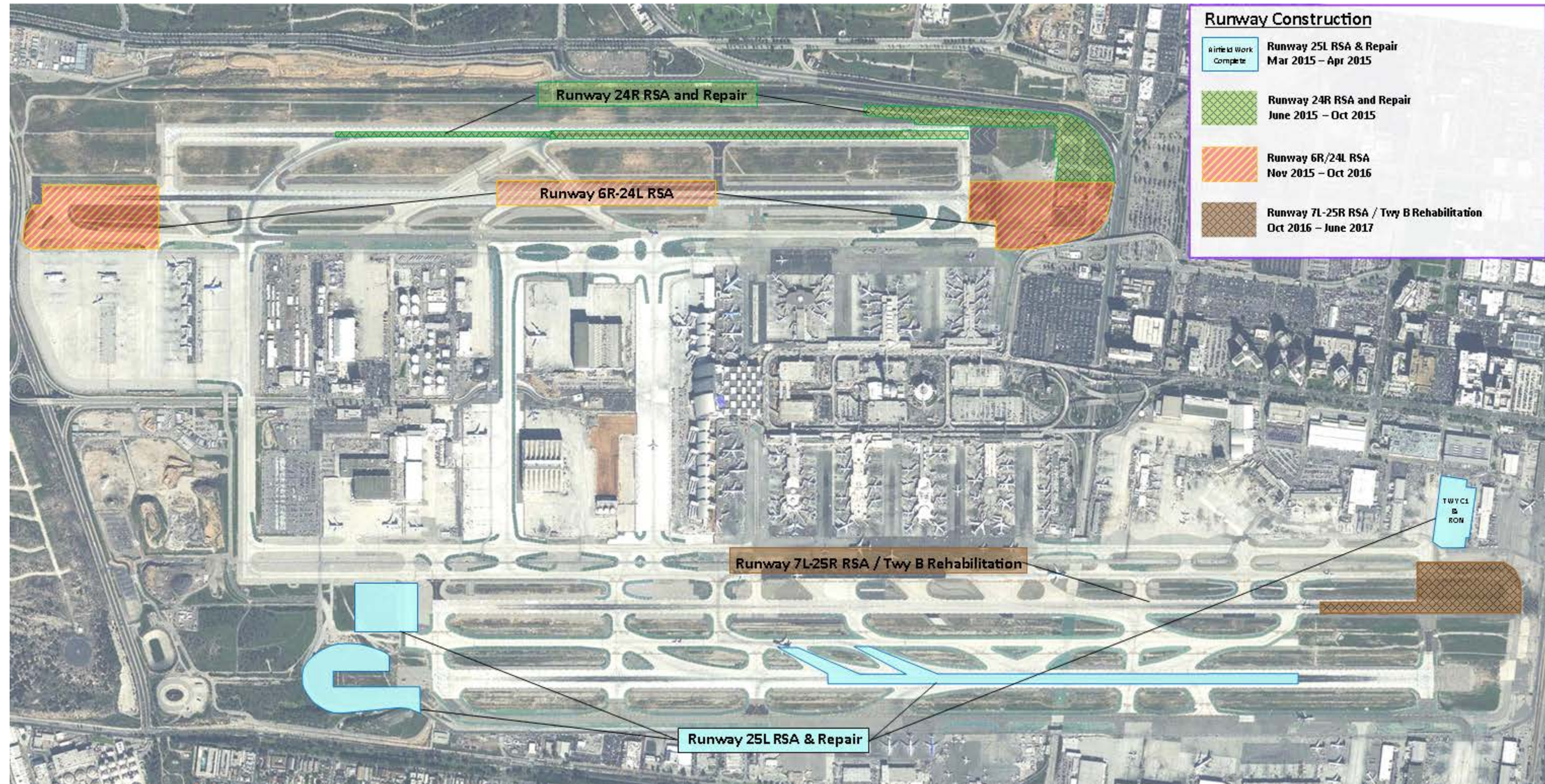
LAX RUNWAY SAFETY AREA PROJECTS (as of September 1, 2015)



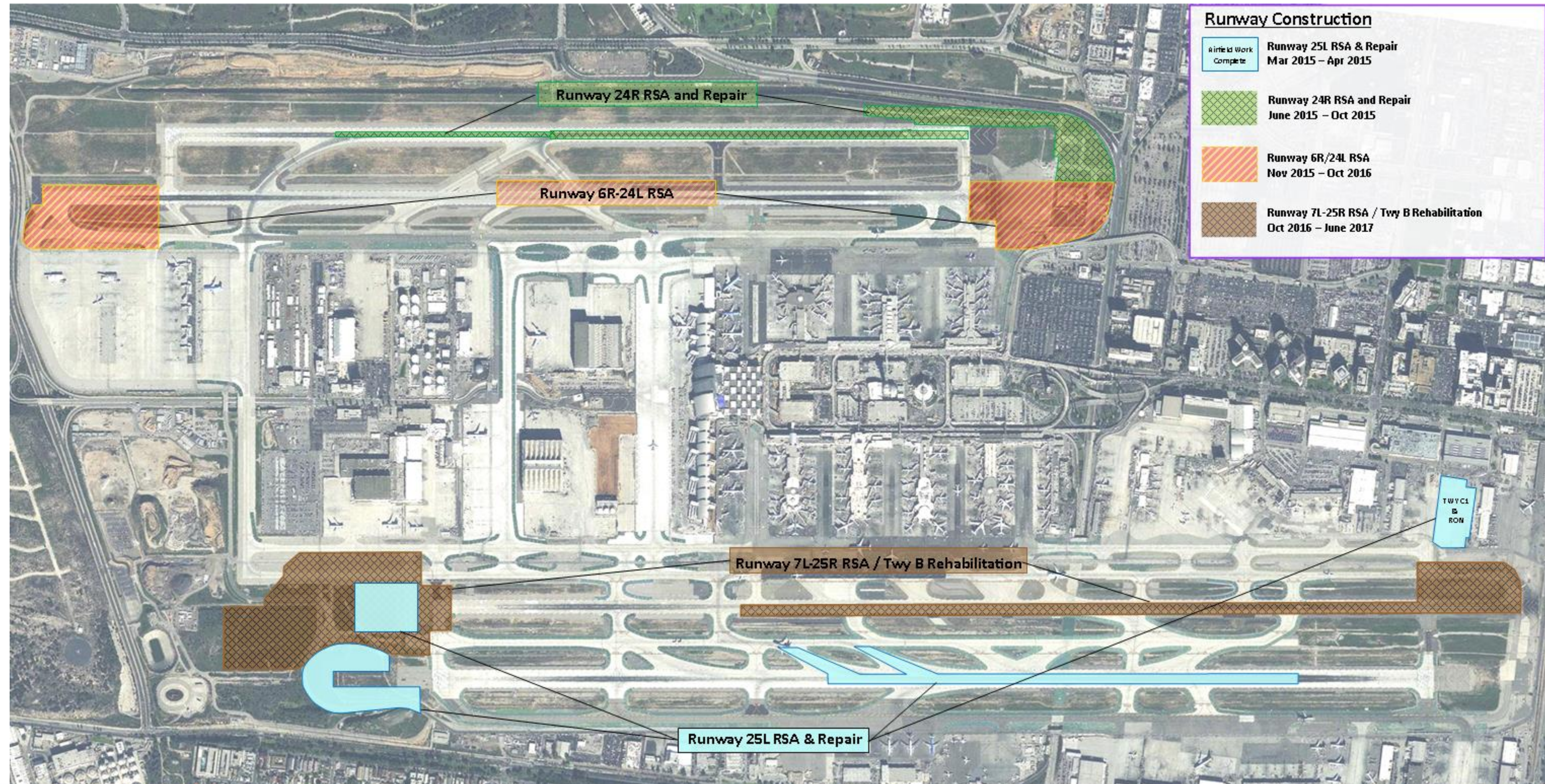
LAX RUNWAY SAFETY AREA PROJECTS (as of September 1, 2015)



LAX RUNWAY SAFETY AREA PROJECTS (as of September 1, 2015)



LAX RUNWAY SAFETY AREA PROJECTS (as of September 1, 2015)





**25L RSA
Grading**

**Temporary
25R Grading**



RW 24R closed June 29, 2015 for 4 months

**Update: Placed box structure
in Argo Ditch & partial runway
pavement replacement**



Argo Channel shoring and grading – 7/30/15

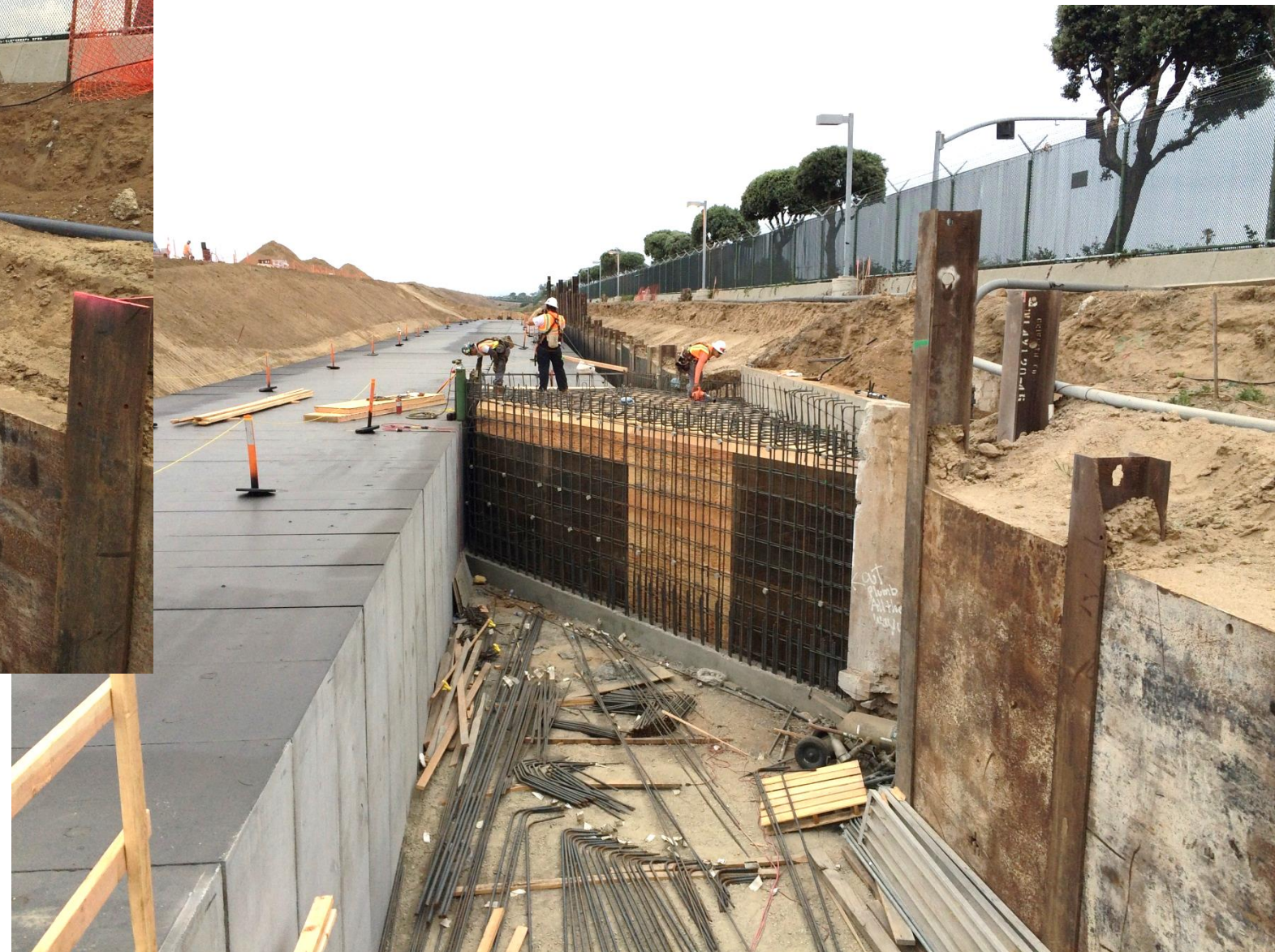


New Argo Channel box structure – 8/25/15



Argo Ditch after July rain. Lincoln Blvd outlet on the right. – 7/20/15

Constructing transition structure for Lincoln Blvd outlet – 8/21/15



Runway 24R paving lane and centerline light cans - 7/29/15



Runway 24R demolition - 7/13/15

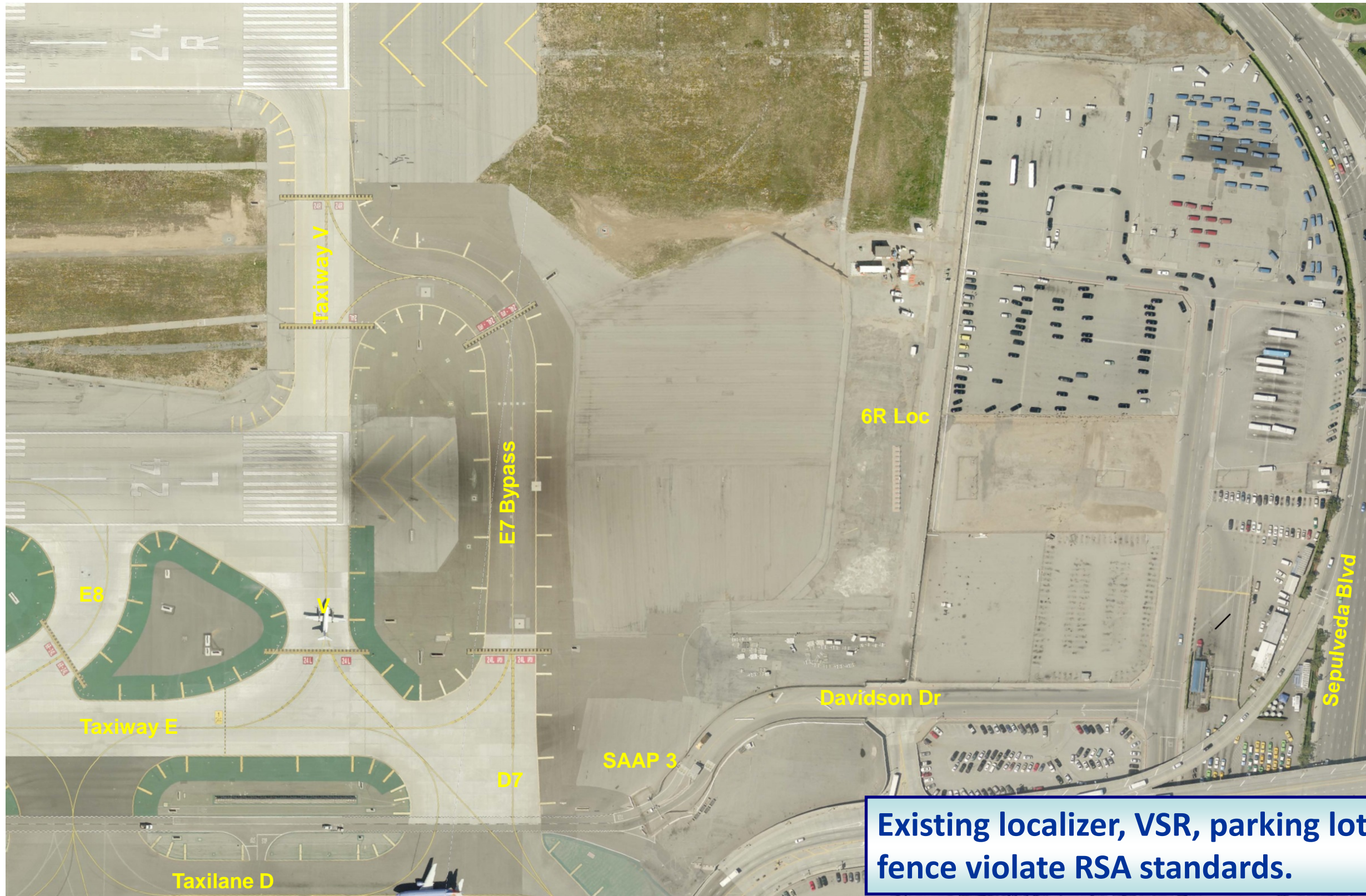




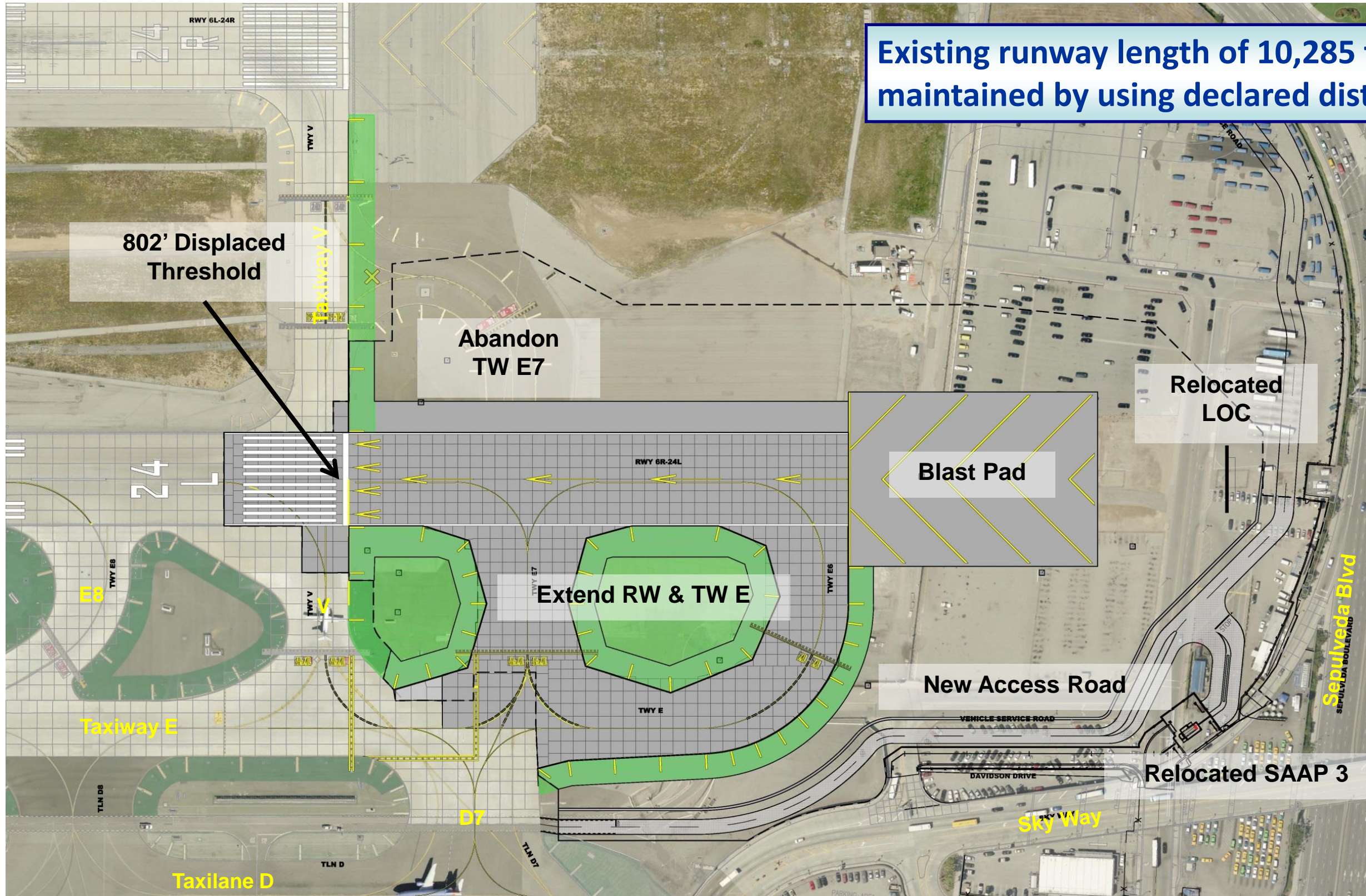
RW Guard Lights at
Taxiway Y - 8/24/15



Runway 24R pavement and
centerline lights - 8/24/15



Existing localizer, VSR, parking lot and fence violate RSA standards.



Existing runway length of 10,285 feet to be maintained by using declared distances.

802' Displaced Threshold

Abandon TW E7

Relocated LOC

Blast Pad

Extend RW & TW E

New Access Road

Relocated SAAP 3

Taxiway E

Taxilane D

Sky Way

Sepulveda Blvd

DAVIDSON DRIVE

VEHICLE SERVICE ROAD

TLN D

D7

E6

V

E7

E6

RWY 6L-24R

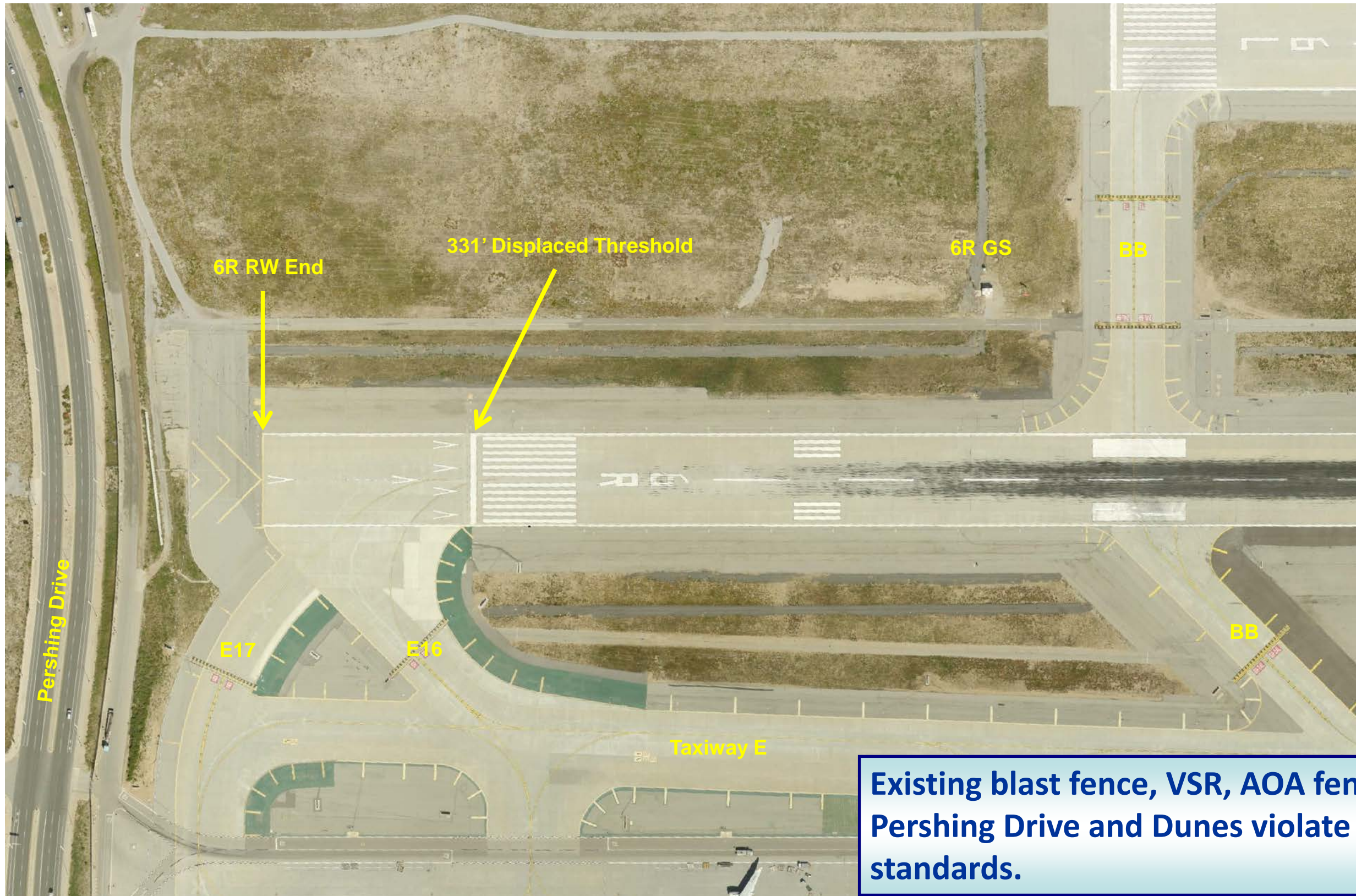
V

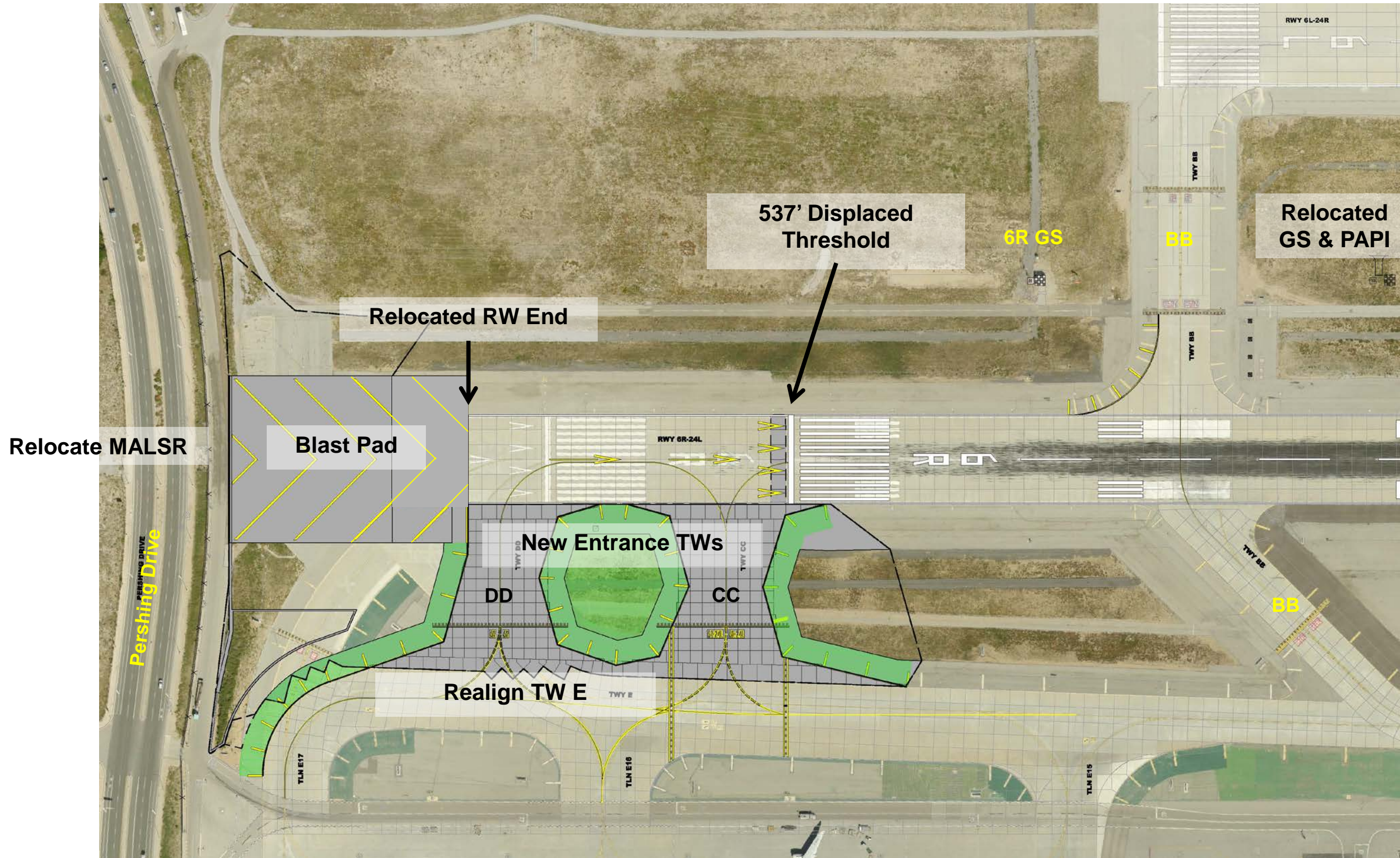
RWY 6R-24L

E

24

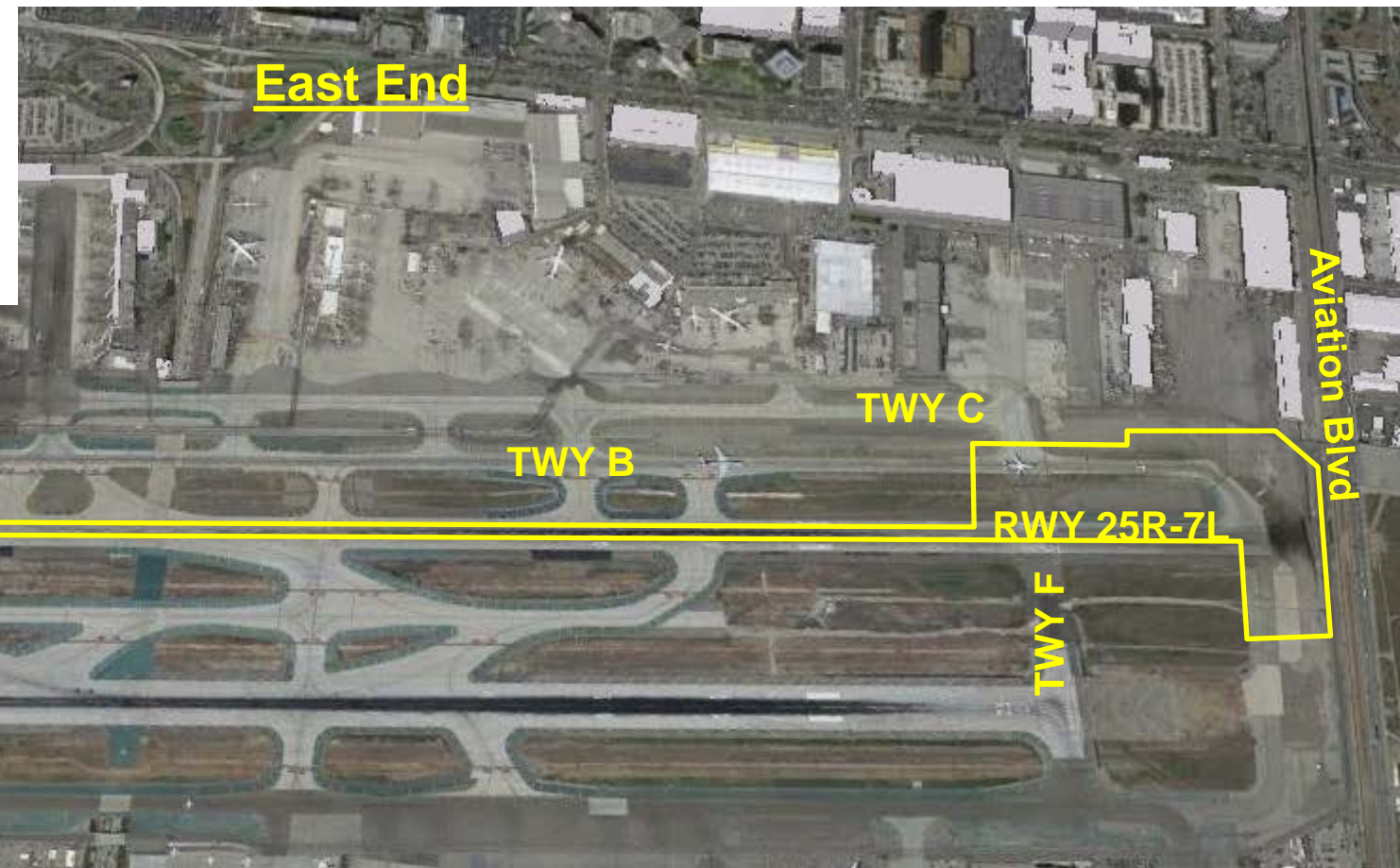
7





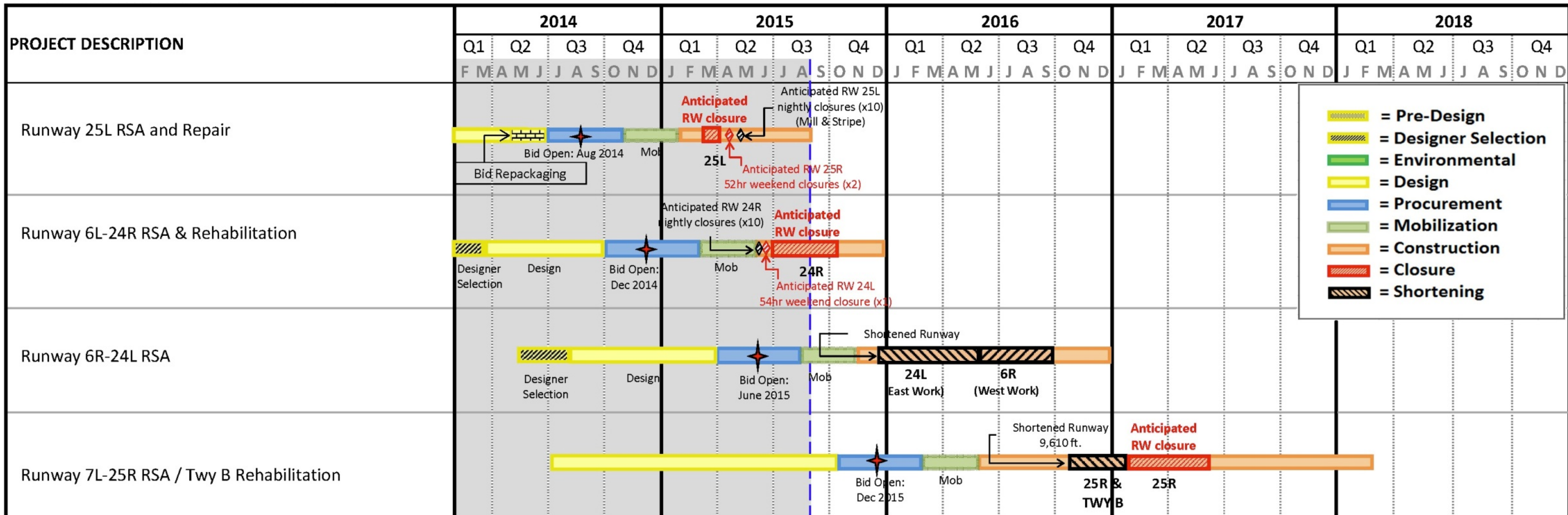


Shortened runway Oct/Nov 2016 - 3½ months
Runway closure Jan/Feb 2017 - 4 months



Update: Closure of Taxiway C re-sequenced to after runway repair work completed.

LAX RUNWAY SAFETY AREA PROJECTS (As of September 1, 2015)



QUESTIONS ?