



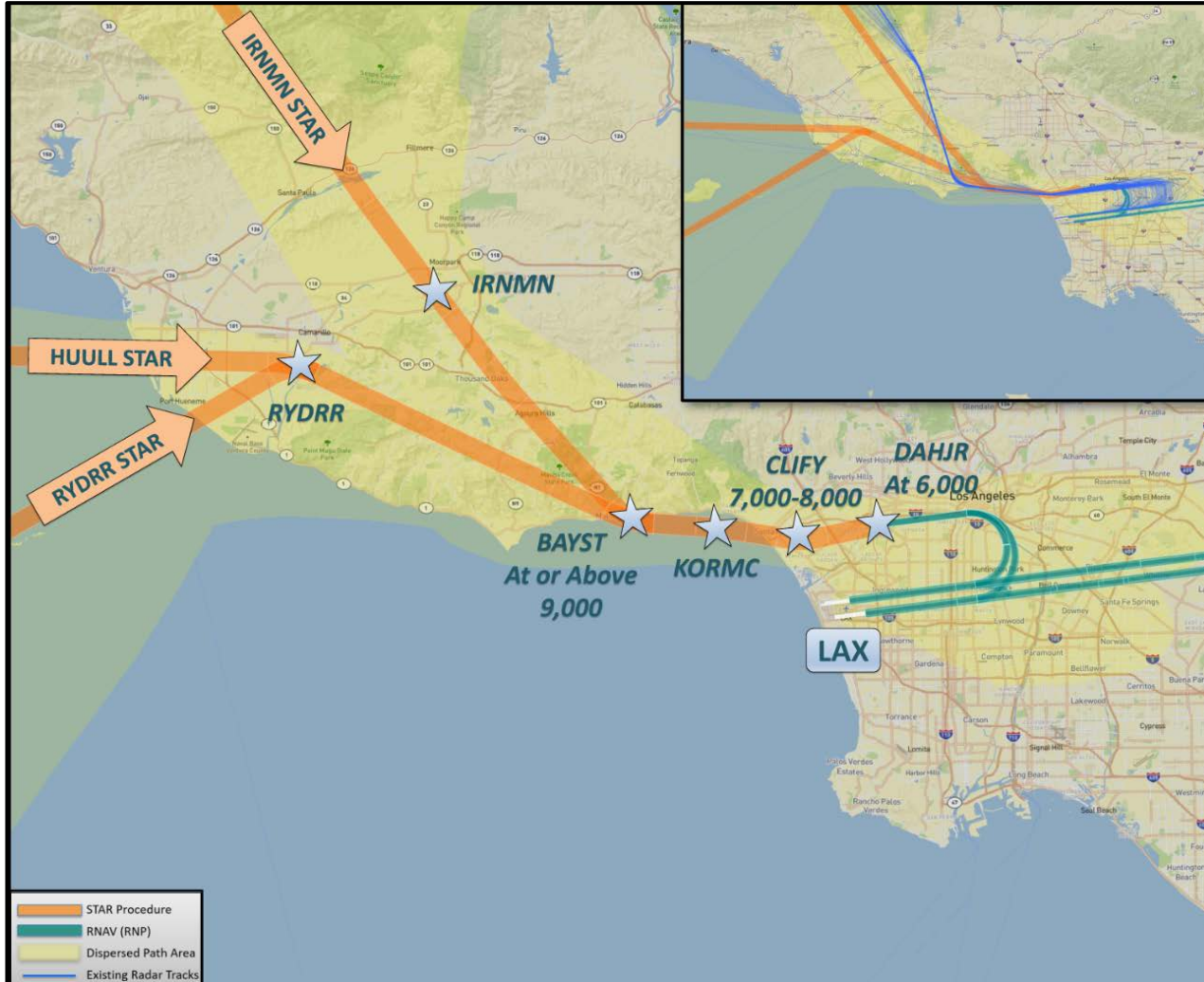
LAX North Downwind Arrivals at DAHJR Waypoint - Before and After Metroplex Implementation

**LAX/Community Noise Roundtable
September 13, 2017**

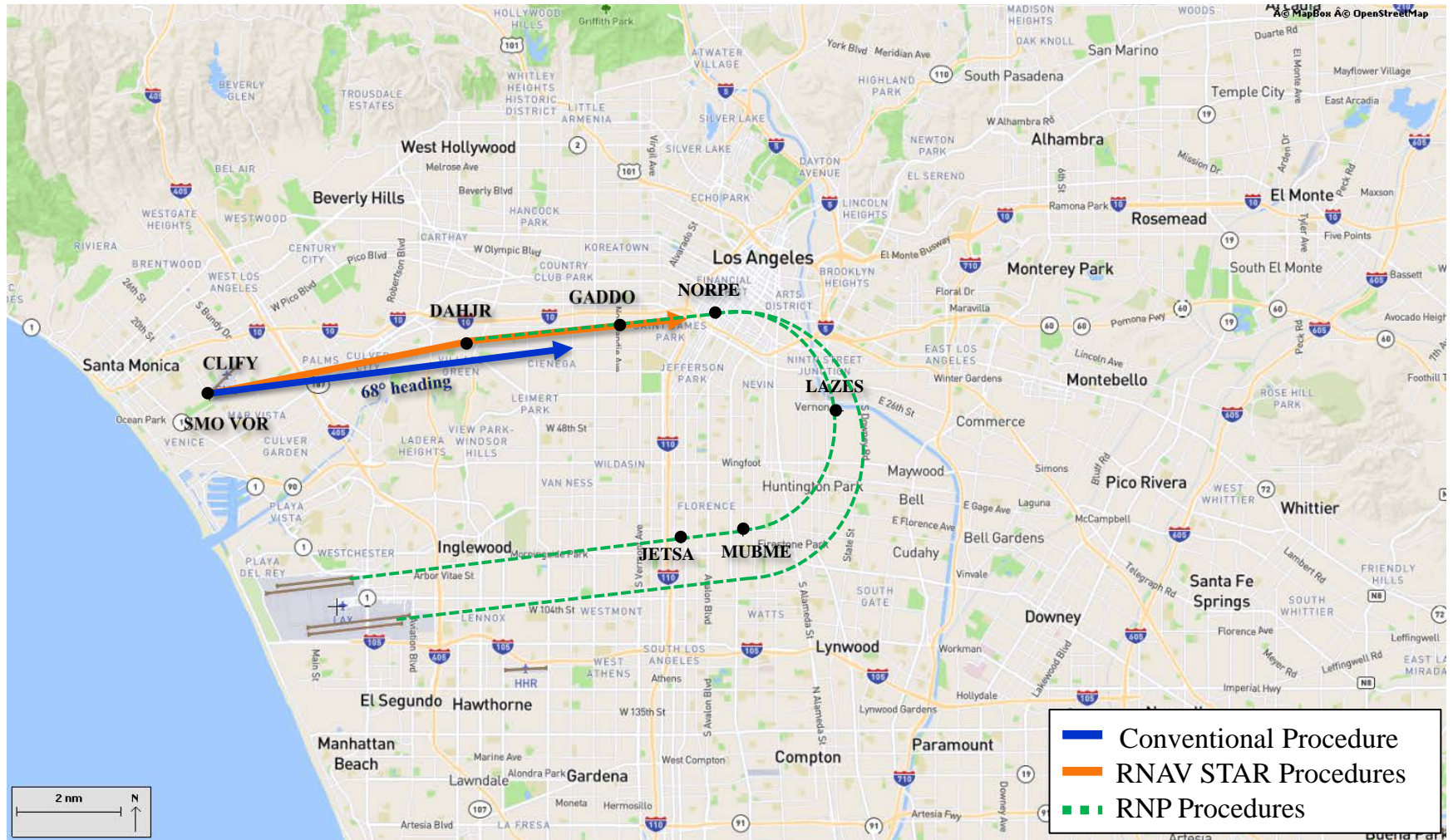
Metroplex procedures implemented by FAA in 3 phases:

- Phase 1: Nov 10, 2016 and Jan 5, 2017
- Phase 2: March 2, 2017 – Required Navigation Performance (RNP) procedures published
- **Phase 3: April 27, 2017 – Area Navigation (RNAV) Standard Terminal Arrival (STAR) Procedures published (IRNMN, HUULL, and RYDRR)**

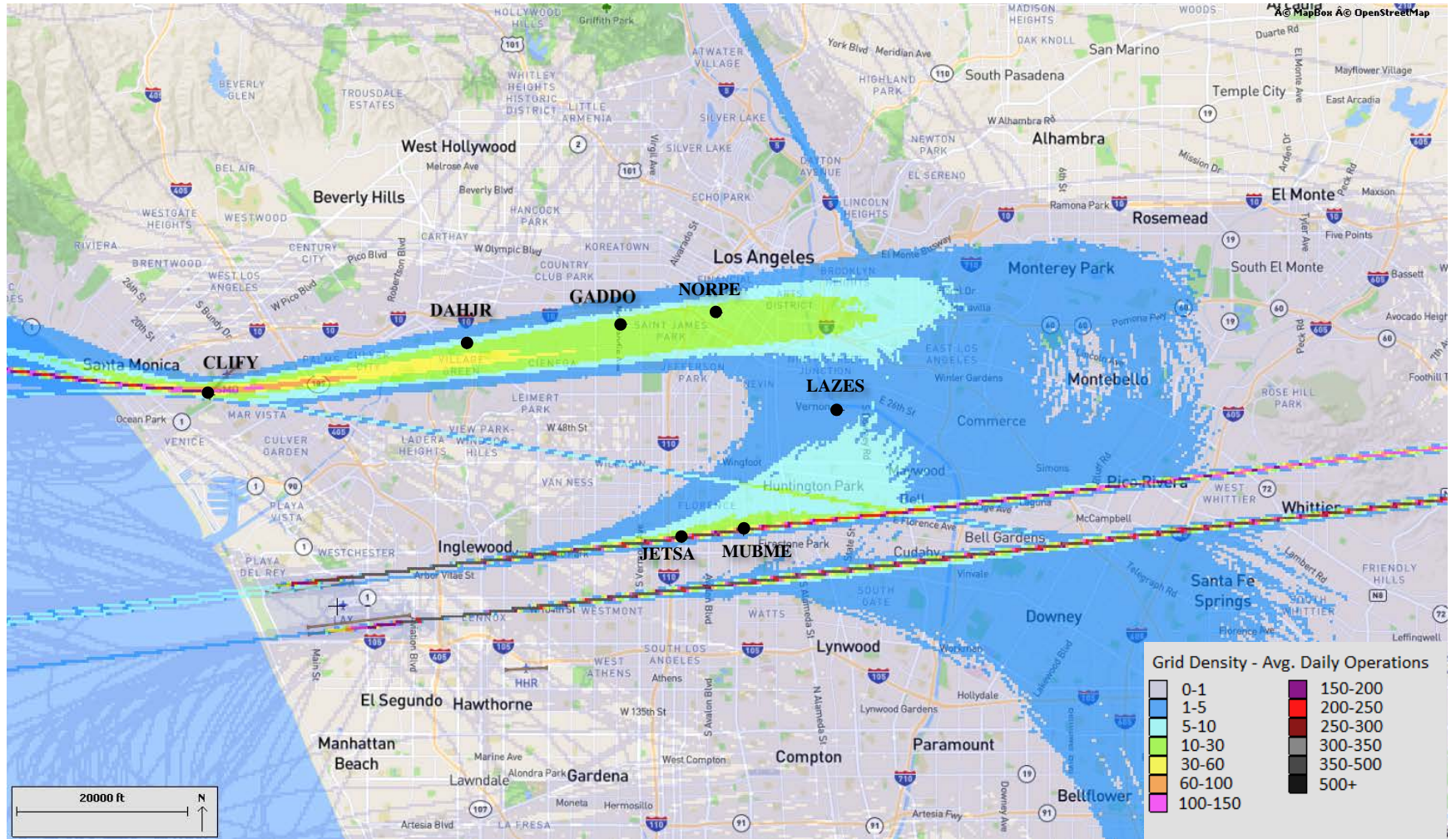
North Downwind RNAV/RNP Procedures



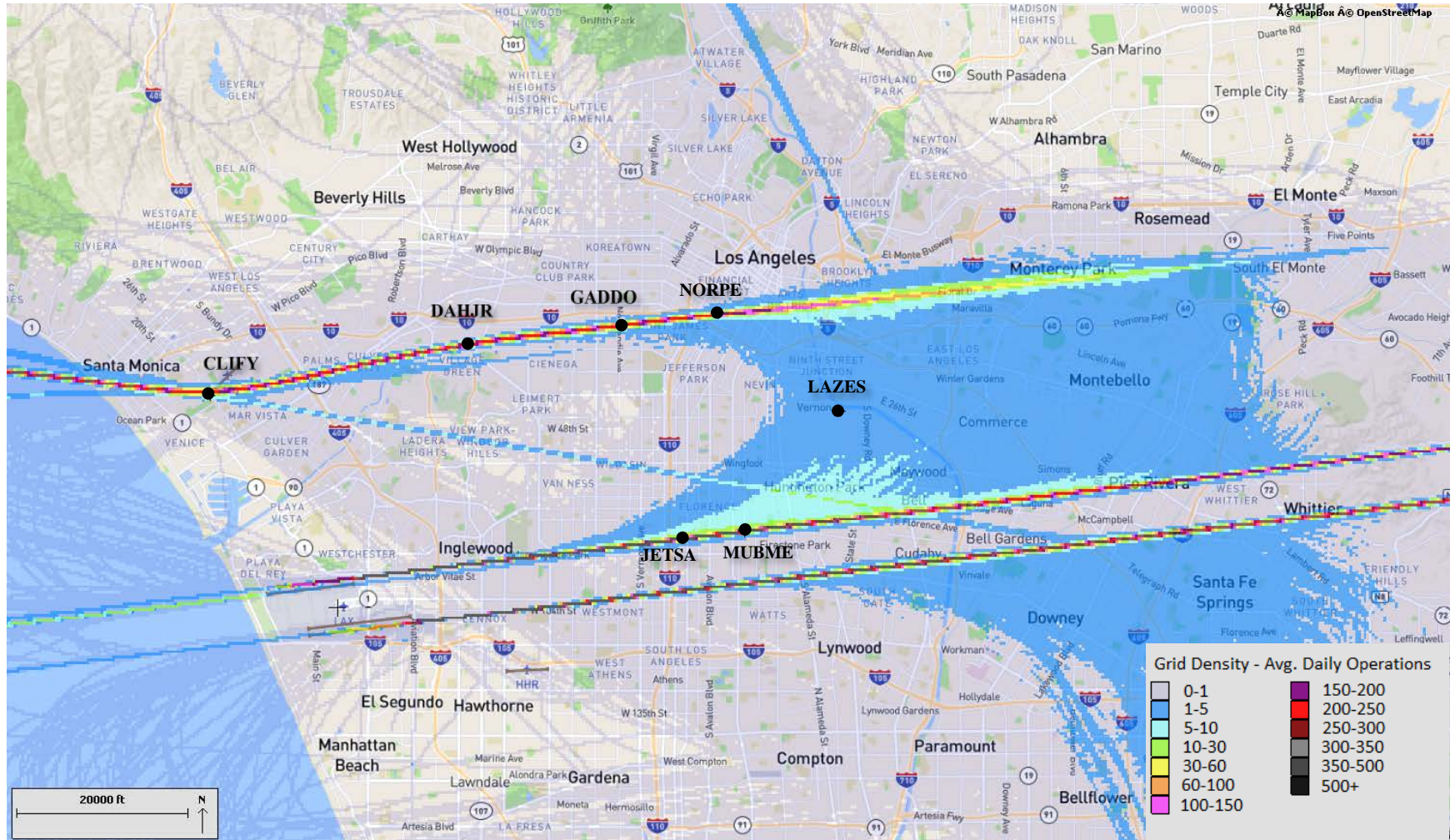
“Conventional” vs. RNAV/RNP Procedures



Before Phase 3 Metroplex Implementation: Flight Track Density for MAR 2017



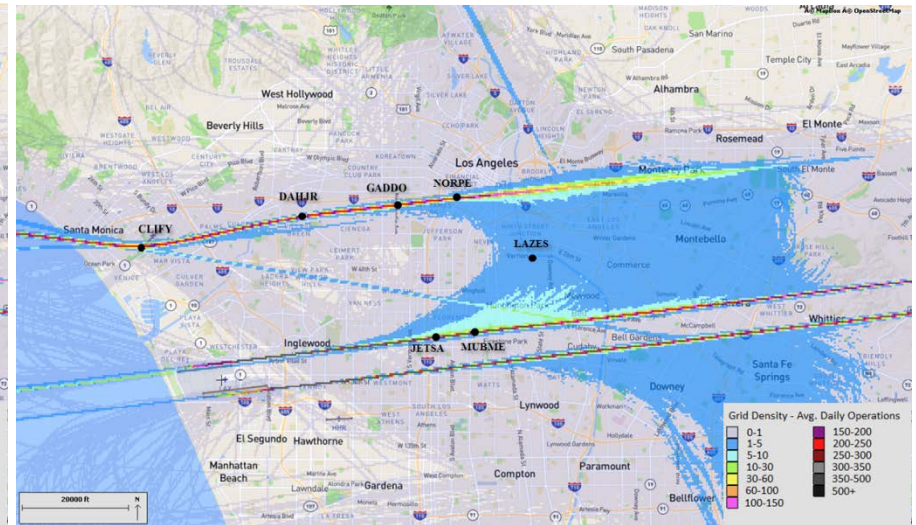
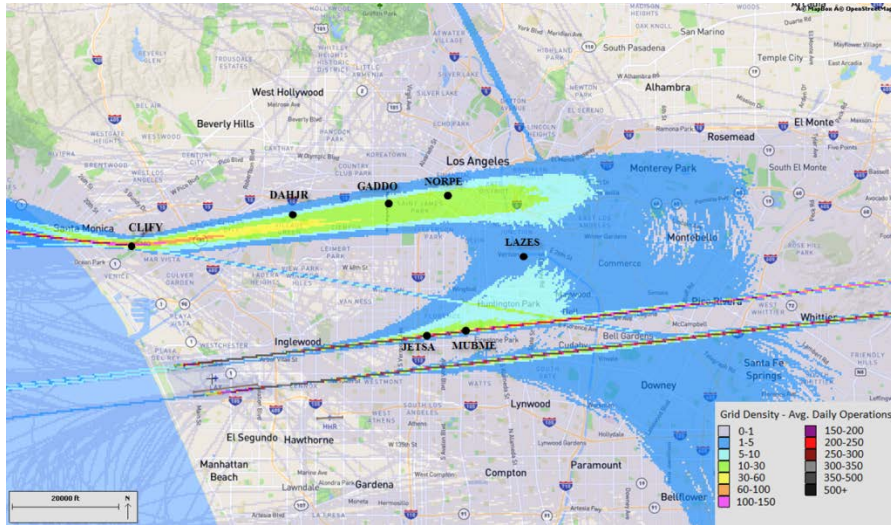
After Phase 3 Metroplex Implementation: Flight Track Density for MAY 2017



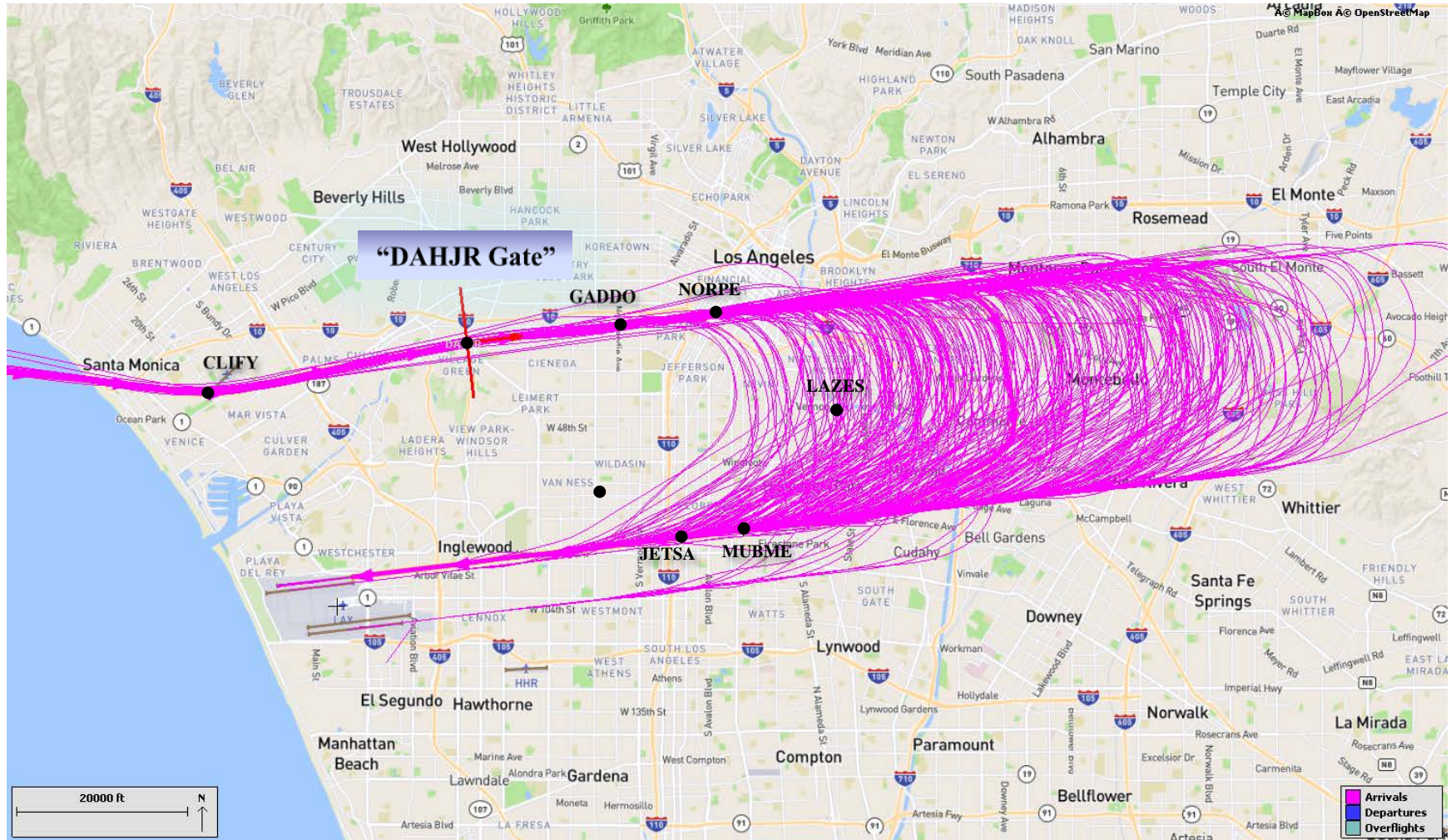
Side-by-Side Comparison

Before Phase 3 Metroplex – MAR 2017

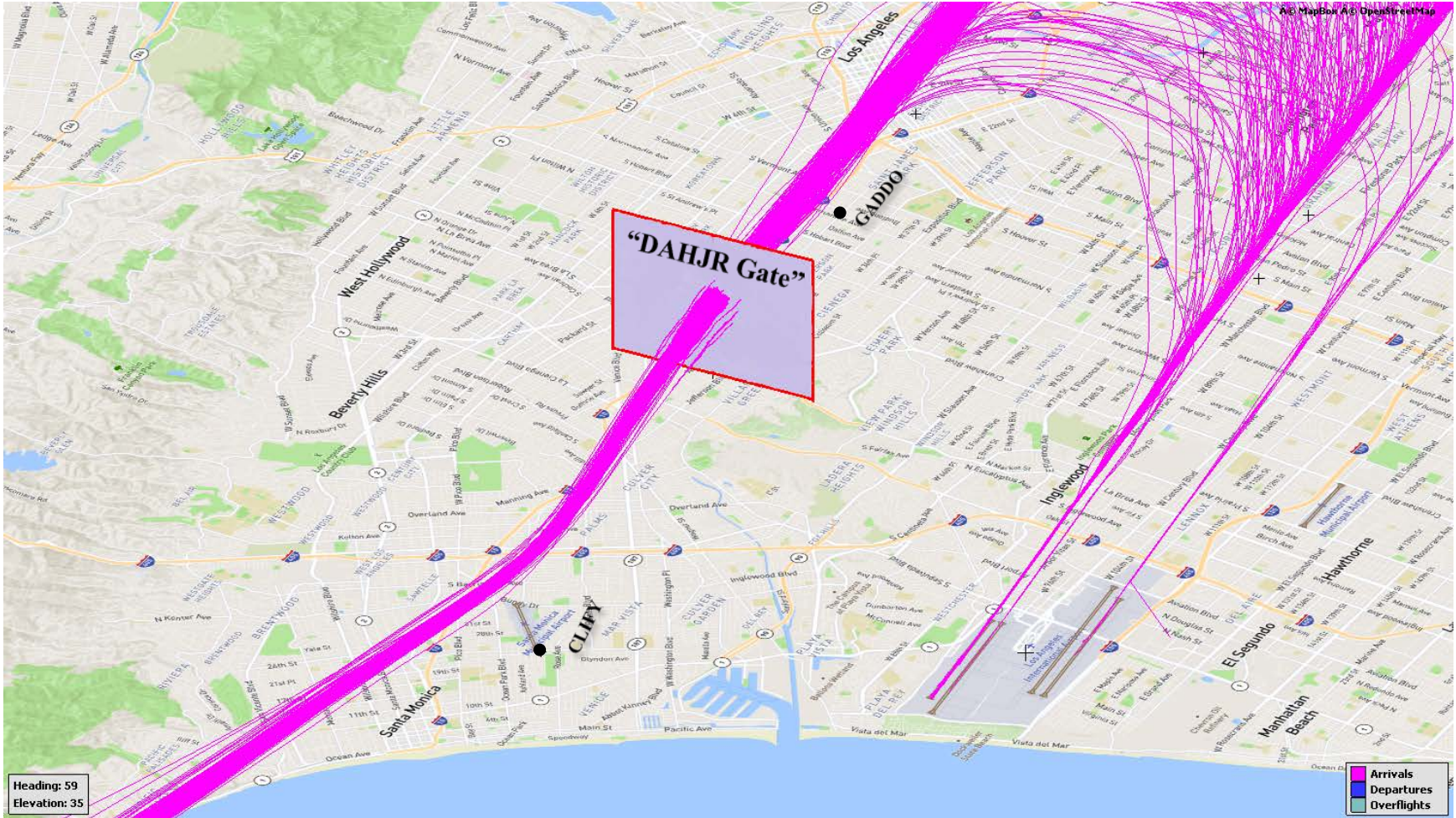
After Phase 3 Metroplex – MAY 2017



Altitude Analysis – “DAHJR Gate”

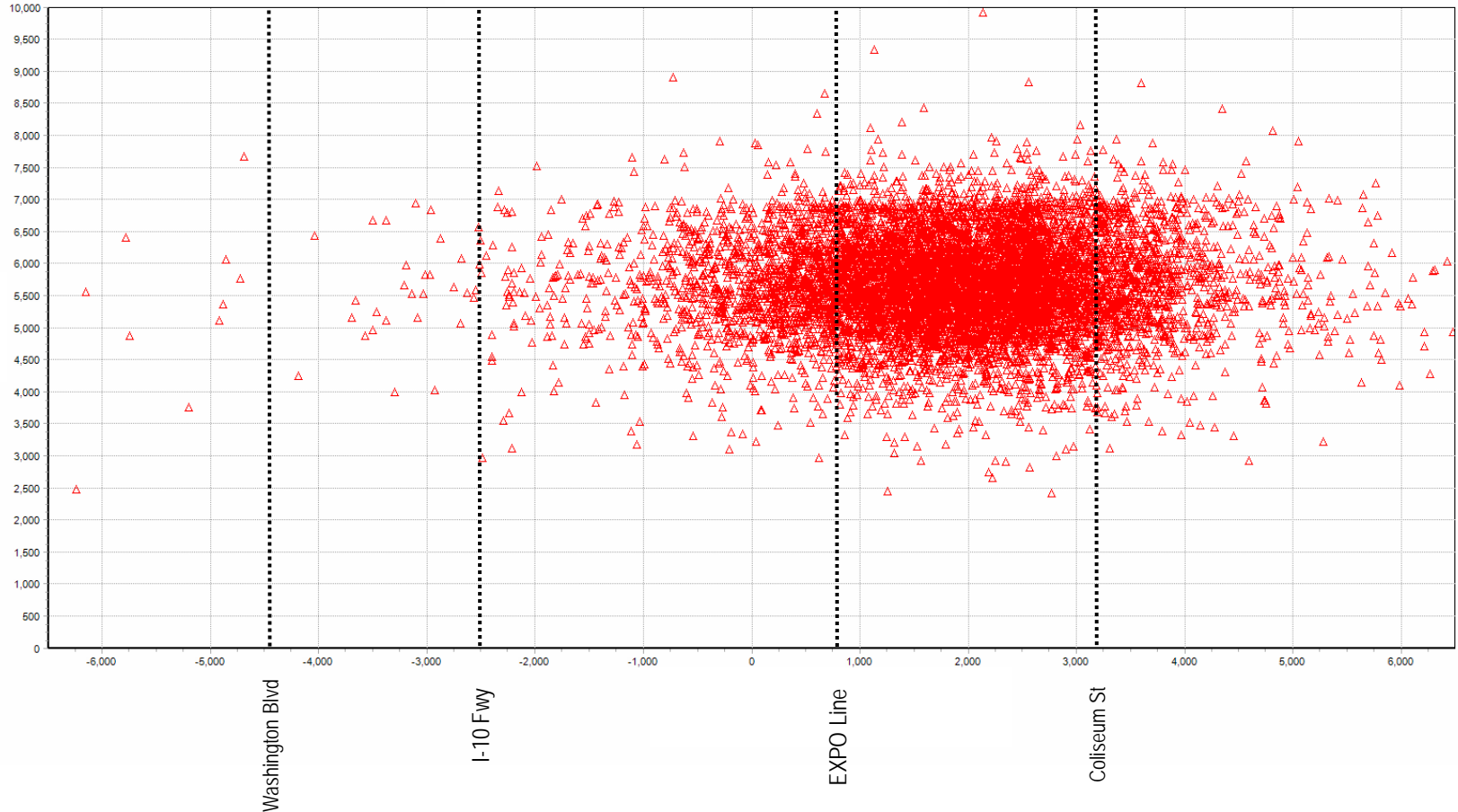


Altitude Analysis – “DAHJR Gate”



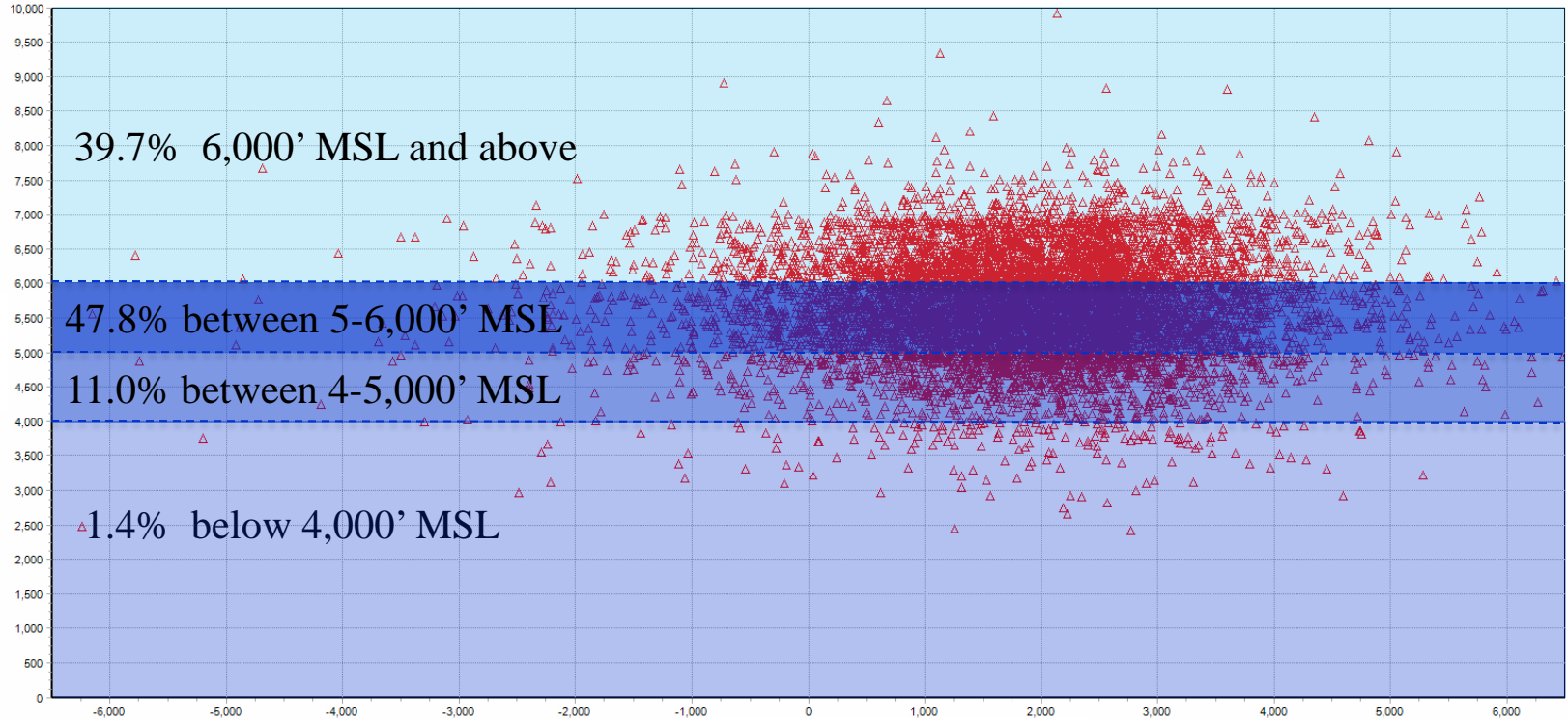
Before Phase 3 Metroplex Implementation: Altitude Distribution for MAR 2017

“DAHJR” Gate Penetration Plot



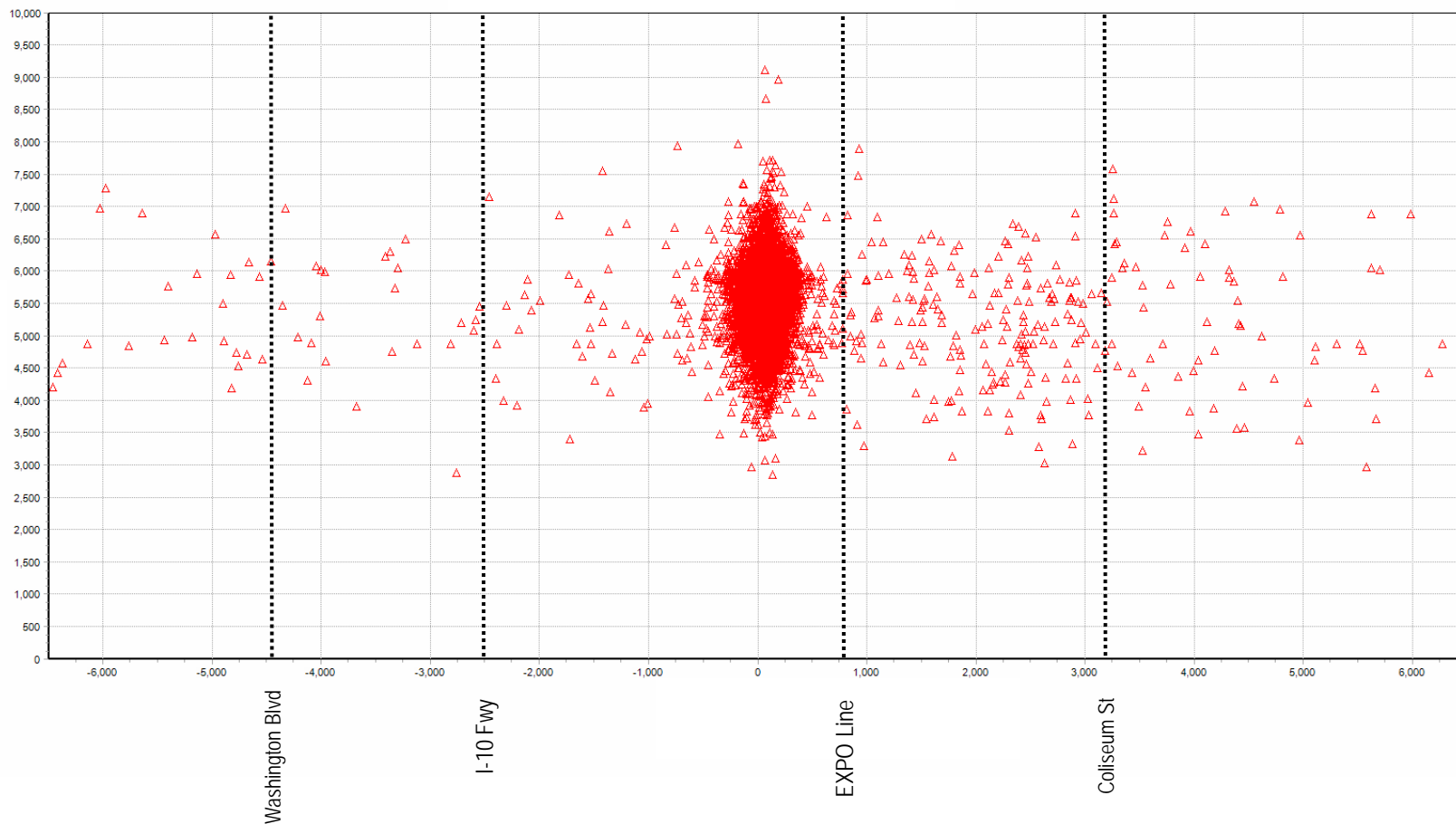
Before Phase 3 Metroplex Implementation: Altitude Distribution for MAR 2017

“DAHJR” Gate Penetration Plot



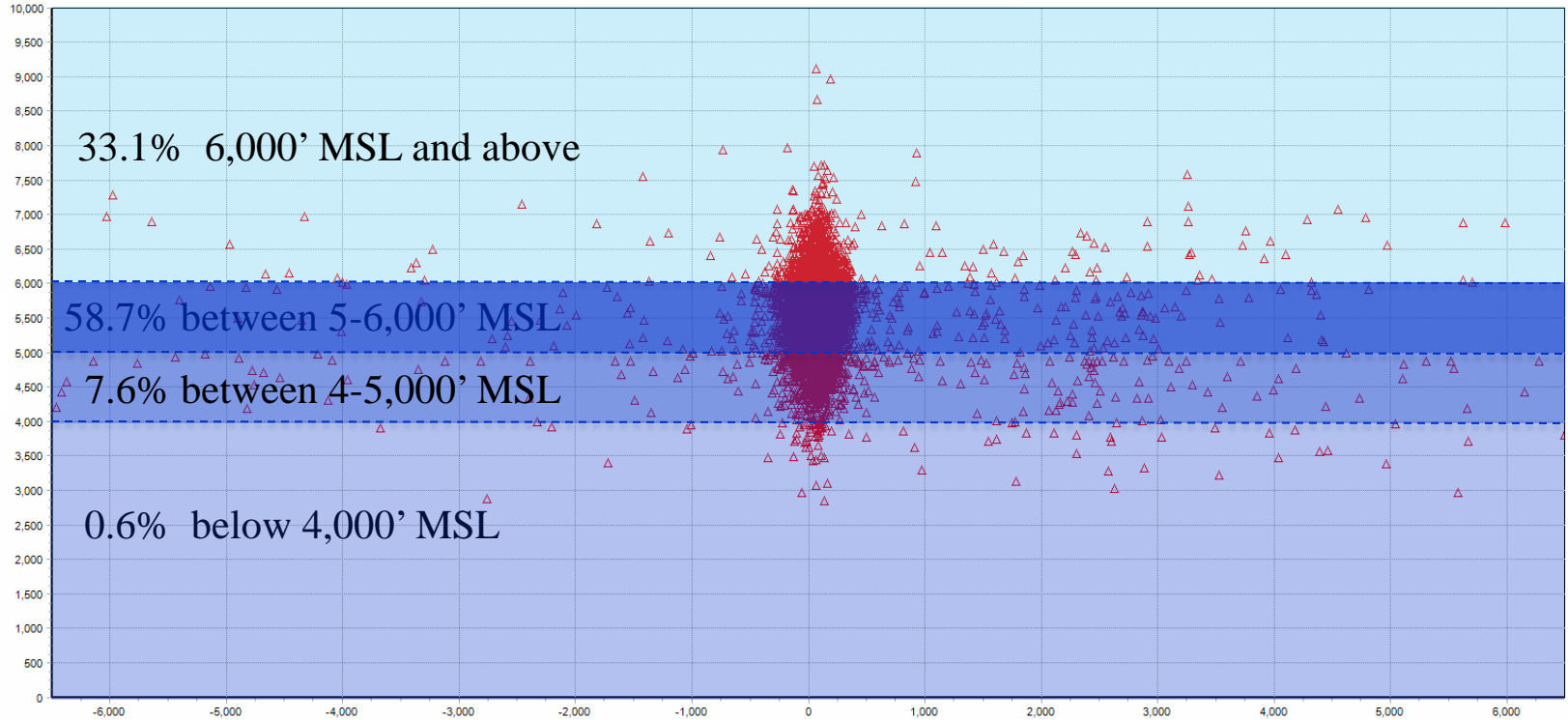
After Phase 3 Metroplex Implementation: Altitude Distribution for MAY 2017

“DAHJR” Gate Penetration Plot



After Phase 3 Metroplex Implementation: Altitude Distribution for MAY 2017

“DAHJR” Gate Penetration Plot



Questions?