

## **Taxiway B, C and P Continuous Closures for Taxiway P Repaving Project**

Taxiway P between Taxiway B and Taxiway C will be closed for 13 continuous days starting on Saturday, April 27, 2019 through Thursday, May 09, 2019 for LAWA Facilities Maintenance and Utility Group to complete the Taxiway P Repaving Project. This project will also require a continuous 20 hour closure of Taxiway B the first weekend to support this work. Taxiway C will be closed nightly for three consecutive nights the following weekend. The following taxiway closures can be expected:

### **Phase 1:**

- Taxiway P closed between Taxiway B and Taxiway C April 27, 2019 (1300L) – May 09, 2019 (0630L). This will be a 13 day continuous closure.
- Taxiway B closed between Taxiway S and Taxiway N April 27, 2019 (1300L) – April 28, 2019 (0900L). This will be a 20 hour continuous closure.

### **Phase 2:**

- Taxiway C closed between Taxiway S and Taxiway C10 May 03, 2019 – May 04, 2019 (0030 – 0630L) and May 05, 2019 (0030 – 0900L).

### **Phase 3:**

- Vehicle Service Road C at Taxiway P will be closed nightly for repaving April 30, 2019 and May 01, 2019 (0030L – 0630L). All VSR C traffic will be detoured around this closure using the inner VSR adjacent to TBIT West terminal, north of Taxiway C (see exhibit below).
- Nightly closures of Taxiway C and Taxiway B are scheduled between April 30, 2019 and May 09, 2019 (0030L – 0630L) to support the VSR repaving activity, and the markings/lighting restoration activities following completion of the repaving work. Please reference current [NOTAMs](#) for the most current taxiway and runway closure information.

Thank you for your support.

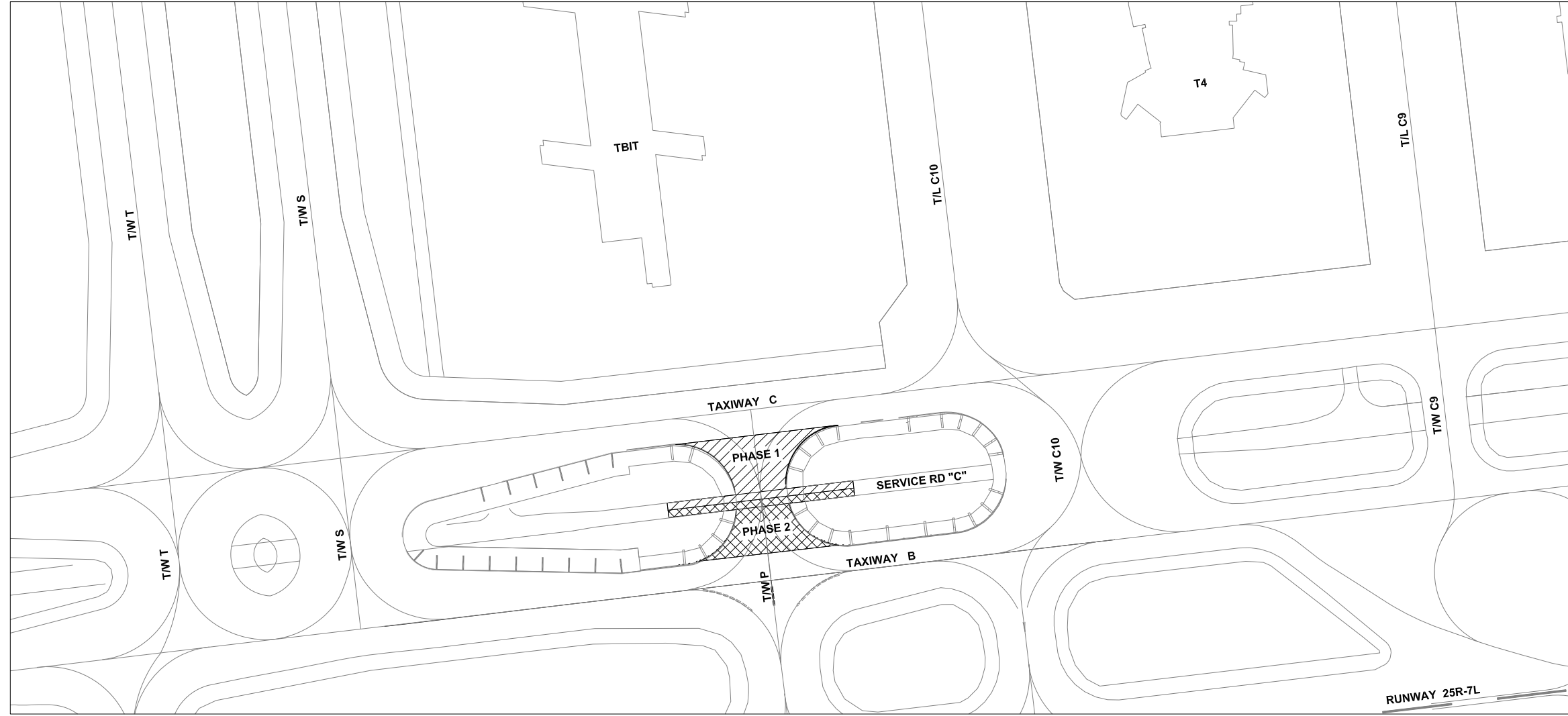
For questions or comments regarding this advisory please contact Airside Manager, Jeff Mort, [Jmort@lawa.org](mailto:Jmort@lawa.org).

**Issue Date: April 25, 2019**

**Subject: Taxiway B, C and P Continuous Closures for Taxiway P Repaving Project**

\*The LAX Operations Advisory will be posted on LAWA's Airport Operations website and can be retrieved at <http://www.lawa.org/aiops.aspx>

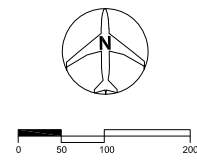




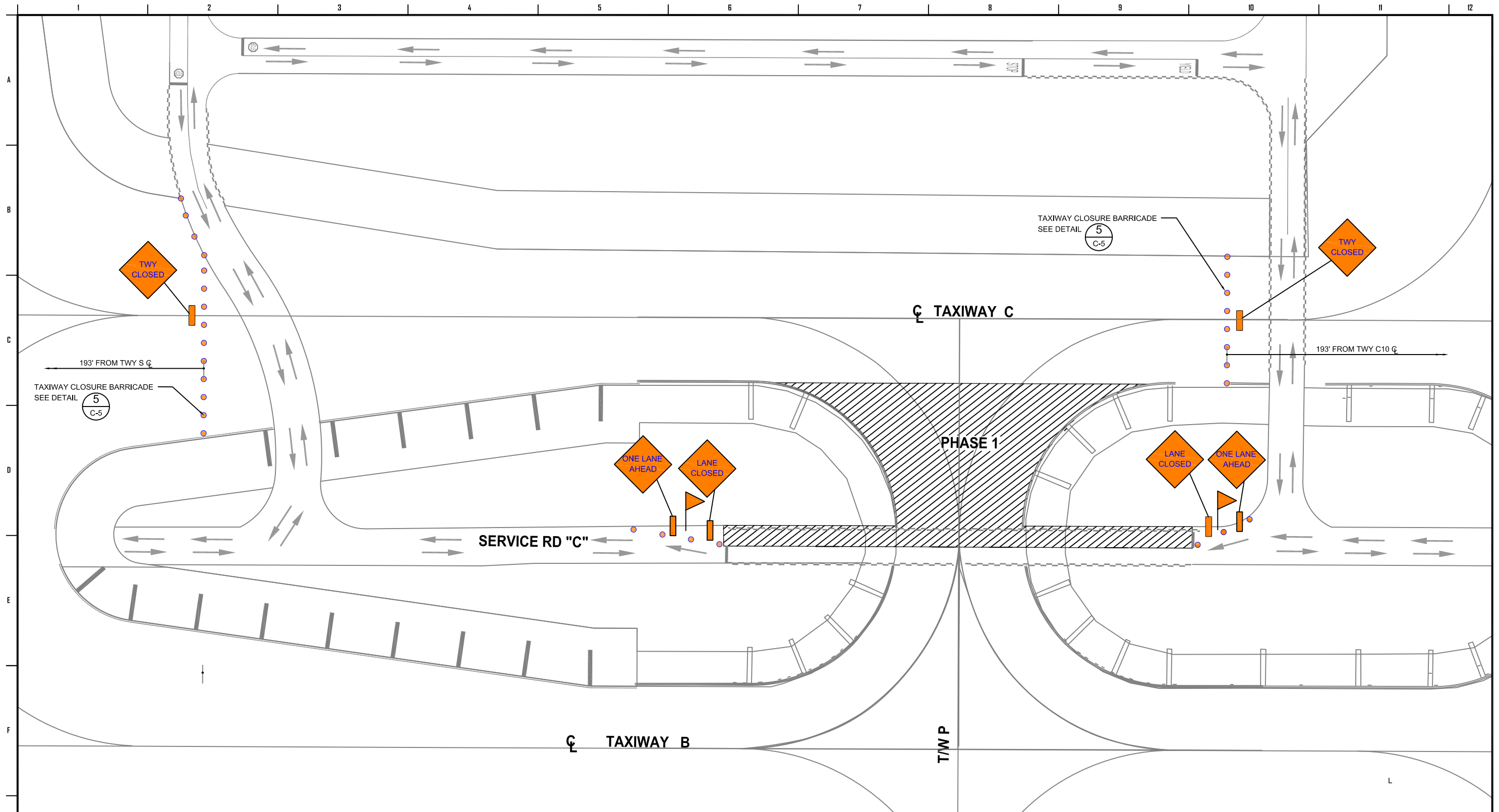
**SITE PLAN**  
SCALE: 1"=100'-0"

**TAXIWAY P PAVEMENT REHABILITATION**

INDEX OF DRAWINGS		
SHEET NUMBER	SHEET TITLE	SHEET DESCRIPTION
1	C-1	SITE PLAN AND DRAWING INDEX
2	C-2	PHASE 1 - PAVEMENT REHABILITATION AND TRAFFIC CONTROL PLAN
3	C-3	PHASE 2 - PAVEMENT REHABILITATION AND TRAFFIC CONTROL PLAN
4	C-4	PAVEMENT MARKING PLAN
5	C-5	PAVEMENT MARKING DETAIL



	Los Angeles World Airports		
	PAVEMENT REHABILITATION AT TAXIWAY P BETWEEN TAXIWAY B & C		
<b>SITE PLAN AND DRAWING INDEX</b>			
LOS ANGELES INTERNATIONAL AIRPORT			
SUBMITTED BY		APPROVED BY	
ASST. CHIEF AIRPORTS ENGINEER		CHIEF AIRPORTS ENGINEER	
DRAWN RPTORRALBA	CHECKED GNAGY	PLAN SET NUMBER OF	SHEET C-1
SCALE AS SHOWN	DATE 04.09.2019	DWG NO. <b>20190504</b>	
GRID LOCATIONS TO	FILE NAME 20190504-C1		



**SCOPE OF WORK:**

**FOR TAXIWAY**

1. REMOVE TOP 4-INCH ASPHALT PAVEMENT BY UNIFORM MILLING.
2. CLEAN THE MILLED SURFACE AND COMPACT, AND THEN PRIOR TO PAVING, APPLY A TACK COAT (FAA P-603 BITUMINOUS TACK COAT) TO THE EXPOSED HMA SURFACE.
3. PLACE ASPHALT PAVEMENT IN ONE 4-INCH LIFTS.
4. ASPHALT MIX TO BE FAA P-401 SPECIFICATION WITH 1-INCH MAX AGGREGATE, PG 82-22 (POLYMER MODIFICATION) BINDER.
5. 95% COMPACTION.
6. RE-STRIPE PAVEMENT MARKING PER PAVEMENT MARKING PLAN ON SHEET C-4

**AREA:**

PHASE 1 = 17,512 SF

**FOR SERVICE ROAD**

1. MILL AND OVERLAY 4-INCH OF AC PAVEMENT.
2. RE-STRIPE PAVEMENT MARKING PER PAVEMENT MARKING PLAN ON SHEET C-4.
3. TAXIWAY C BETWEEN TAXIWAY S & TAXIWAY C10 WILL BE CLOSED.

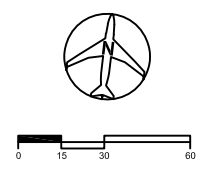
**TRAFFIC CONTROL NOTES:**

- PORTION OF TAXIWAY "P" BETWEEN TAXIWAY B AND TAXIWAY C TO BE CLOSED FOR CONSTRUCTION.
- ONE LANE ON SERVICE ROAD "C" TO BE CLOSED FOR CONSTRUCTION
- ONE LANE TO REMAIN OPEN FOR TRAFFIC
- FLAGGERS TO BE STATIONED AT BOTH ENDS OF THE OPEN LANE TO MAINTAIN TRAFFIC FLOW.

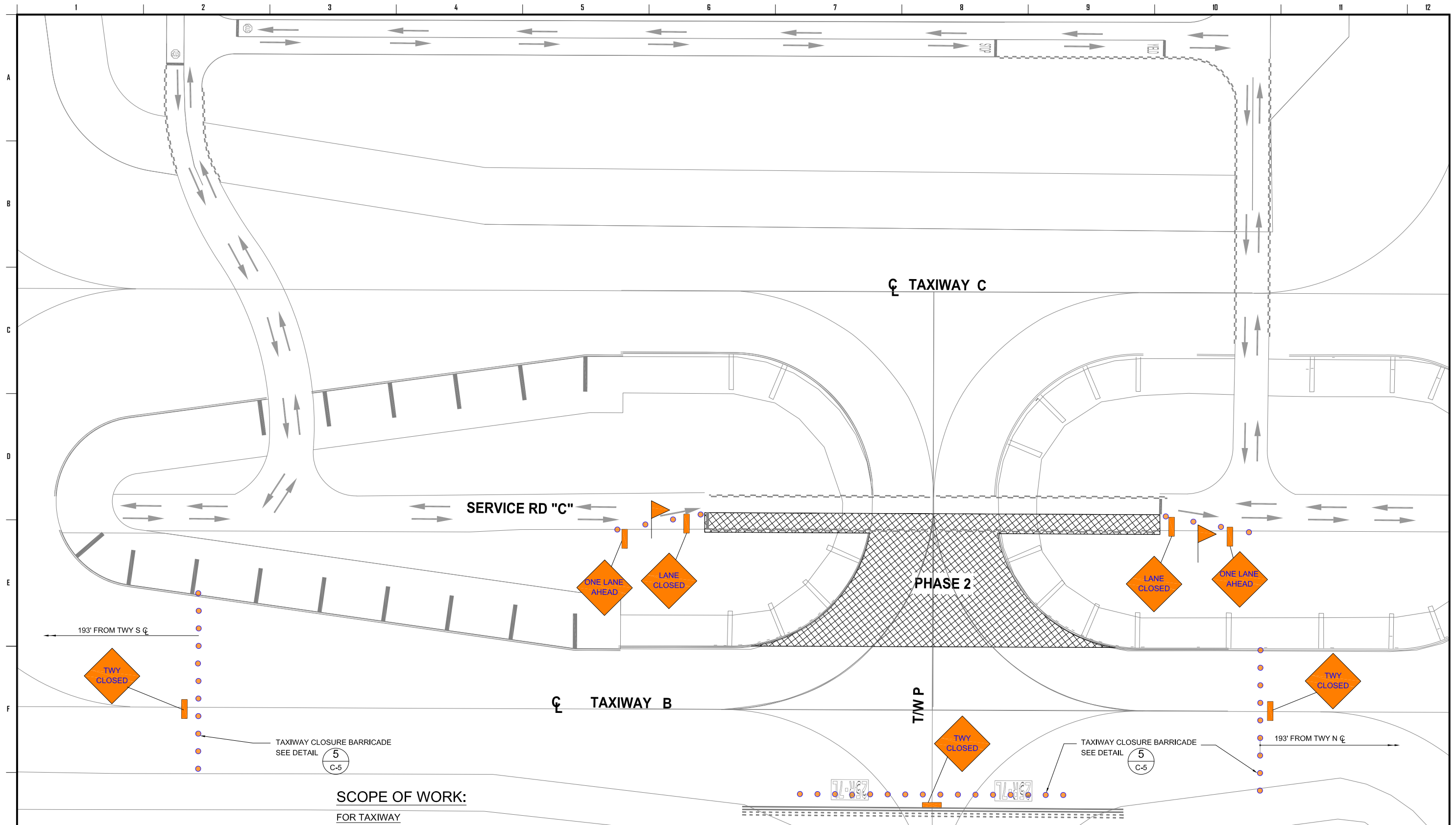
**LEGEND:**

- MILL AND OVERLAY
- FLAGGERS STATIONED TO MAINTAIN TRAFFIC FLOW
- TRAFFIC DELINEATORS TO BE PLACED AT 20 FEET MAX. SPACING
- SIGN PER PLAN

C-2.dwg 04/09/2019



		Los Angeles World Airports PAVEMENT REHABILITATION AT TAXIWAY P BETWEEN TAXIWAY B & C PAVEMENT REHABILITATION AND TRAFFIC CONTROL PHASE I LOS ANGELES INTERNATIONAL AIRPORT	
SUBMITTED BY RPTORRALBA	CHECKED GNAGY	PLAN SET NUMBER OF	SHEET C-2
DRAWN RPTORRALBA	DATE 04.09.2019	DWG NO.	20190504
GRID LOCATIONS TO	FILE NAME 20190504-C2		



**SCOPE OF WORK:**

**FOR TAXIWAY**

1. REMOVE TOP 4-INCH ASPHALT PAVEMENT BY UNIFORM MILLING.
2. CLEAN THE MILLED SURFACE AND COMPACT, AND THEN PRIOR TO PAVING, APPLY A TACK COAT (FAA P-603 BITUMINOUS TACK COAT) TO THE EXPOSED HMA SURFACE.
3. PLACE ASPHALT PAVEMENT IN ONE 4-INCH LIFTS.
4. ASPHALT MIX TO BE FAA P-401 SPECIFICATION WITH 1-INCH MAX AGGREGATE, PG 82-22 (POLYMER MODIFICATION) BINDER.
5. 95% COMPACTION.
6. RE-STRIPE PAVEMENT MARKING PER PAVEMENT MARKING PLAN ON SHEET C-4

**FOR SERVICE ROAD**

1. MILL AND OVERLAY 4-INCH OF AC PAVEMENT.
2. RE-STRIPE PAVEMENT MARKING PER PAVEMENT MARKING PLAN ON SHEET C-4.
3. TAXIWAY B BETWEEN TAXIWAY S & TAXIWAY N WILL BE CLOSED.

**AREA:**

PHASE 2 = 15,695 SF

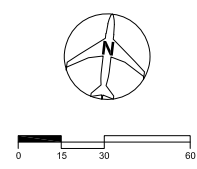
**TRAFFIC CONTROL NOTES:**

- PORTION OF TAXIWAY "P" BETWEEN TAXIWAY B AND TAXIWAY C TO BE CLOSED FOR CONSTRUCTION.
- ONE LANE ON SERVICE ROAD "C" TO BE CLOSED FOR CONSTRUCTION
- ONE LANE TO REMAIN OPEN FOR TRAFFIC
- FLAGGERS TO BE STATIONED AT BOTH ENDS OF THE OPEN LANE TO MAINTAIN TRAFFIC FLOW.

**LEGEND:**

- MILL AND OVERLAY
- FLAGGERS STATIONED TO MAINTAIN TRAFFIC FLOW
- TRAFFIC DELINEATORS TO BE PLACED AT 20 FEET MAX. SPACING
- SIGN PER PLAN

C-2.dwg 01/09/2019



Los Angeles World Airports <b>PAVEMENT REHABILITATION AT TAXIWAY P BETWEEN TAXIWAY B &amp; C</b> <b>PAVEMENT REHABILITATION AND TRAFFIC CONTROL</b> PHASE 2 LOS ANGELES INTERNATIONAL AIRPORT			
SUBMITTED BY		APPROVED BY	
ASST. CHIEF AIRPORTS ENGINEER		CHIEF AIRPORTS ENGINEER	
DRAWN RPTORRALBA	CHECKED GNAGY	PLAN SET NUMBER OF	SHEET C-3
SCALE AS SHOWN	DATE 04.09.2019	DWG NO. <b>20190504</b>	
GRID LOCATIONS TO	FILE NAME 20190504-C3		