

Runway 7R-25L Rehabilitation Project

Runway 7R-25L will be closed for pavement reconstruction and lighting improvements starting on Friday, February 26, 2021 through Wednesday, May 05, 2021. The purpose of this work is to remove and replace the runway keel section with a new asphalt overlay, including Taxiways H6 and H7. New taxiway centerline lights will be installed at Taxiway G between Taxiway A and Taxiway H. Please see pages two and three for the overall construction limits.

Operational Impacts:

- Runway 25R will be closed on Friday, February 26, 2021 (0600-1330L) to complete temporary markings, lighting, and sign modifications required to support the Taxiway H closures during the project.
- Runway 25L will be closed on Friday, February 26, 2021 (starting at 1400L) through Wednesday, May 05, 2021.
- Taxiway H will be closed between Taxiway G and Taxiway J to support the repaving of Taxiway H6 and Taxiway H7 for the duration of the project.
- Taxiway G will be closed between Taxiway A and Taxiway H to support the repaving of the runway keel section and the installation of new taxiway centerline lighting for the duration of the project.
- Expect short duration phased rolling closures of Taxiway A, Taxiway F, Taxiway G, Taxiway L, and Taxiway Q for temporary markings, lighting, and sign modifications at the start of the project. Similar rolling closures will be required again toward the end of the project to restore the taxiway lighting, markings, and signs.
- A 300-foot section of Vehicle Service Road A between Taxiways A3 and A5 will be temporarily detoured slightly to the south to accommodate space for construction haul route traffic to queue for access to Runway 25L. See page three for the plan exhibit.

Notices to Airmen (NOTAMs) will be issued 120 hours prior to the scheduled closures. Please plan flight operations accordingly. For current airfield operating conditions please check NOTAMs at <https://notams.aim.faa.gov/notamSearch/disclaimer.html>. Thank you for your support.

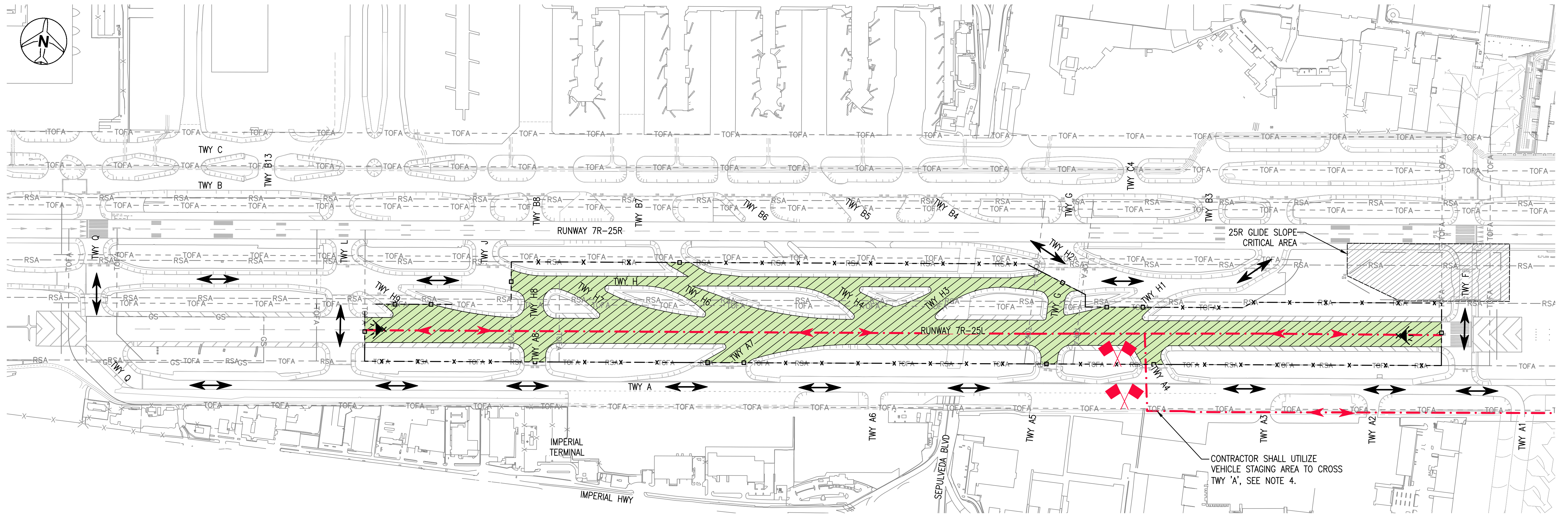
For questions or comments regarding this advisory please contact Airside Manager, Jeff Mort, Jmort@lawa.org.

Issue Date: February 04, 2021

Subject: Runway 7R-25L Rehabilitation Project

*The LAX Operations Advisory will be posted on LAWA's Airport Operations web site and can be retrieved at <http://www.lawa.org/airops.aspx>



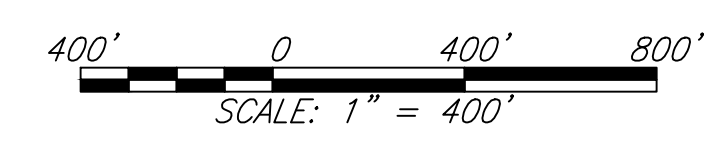


LEGEND:

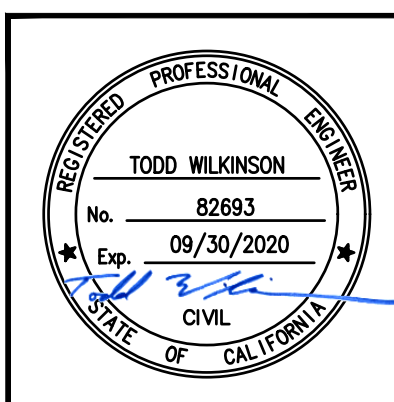
- RSA --- RUNWAY SAFETY AREA
- TOFA --- TAXIWAY OBJECT FREE AREA
- ✈ RUNWAY CLOSURE LIGHTED X
SEE DETAIL 5, SHEET G402
- ↔ AIRCRAFT TAXI ROUTES
- ←- - - - -> CONTRACTOR HAUL ROUTE (AIRSIDE)
- - □ - - - - - EXISTING LOW PROFILE BARRICADES
- - x - - - - - EXISTING ORANGE CONSTRUCTION FENCE
- ▨ PAVEMENT CLOSED TO AIRCRAFT
- ▨ PHASE 3 WORK AREA
- 🚧 FLAGGER EQUIPPED WITH TWO-WAY RADIO

NOTES:

1. CONTRACTOR SHALL NOT ENTER THE 25R GLIDE SLOPE CRITICAL AREA UNDER ANY CIRCUMSTANCES UNLESS PREVIOUSLY APPROVED BY LAWA OPERATIONS IN WRITING.
2. SEE CONSTRUCTION ACCESS AND HAUL ROUTE, SHEET G200 FOR AOA ENTRANCE AND EXIT DETAILS.
3. CONTRACTOR SHALL NOT BLOCK TRAFFIC ON VEHICLE SERVICE ROAD 'A'
4. FLAGGERS ARE REQUIRED FOR CONSTRUCTION CROSSINGS AT TAXIWAYS 'A4' AND 'L'. SEE TEMPORARY VEHICLE SERVICE Road 'A' Relocation, SHEET G202.
5. ALL RUNWAY AND TAXIWAY CLOSURES FOR TEMPORARY NIGHT WORK TO BE COORDINATED AND APPROVED BY AIRSIDE OPERATIONS AIRSIDE CONSTRUCTION OFFICE.

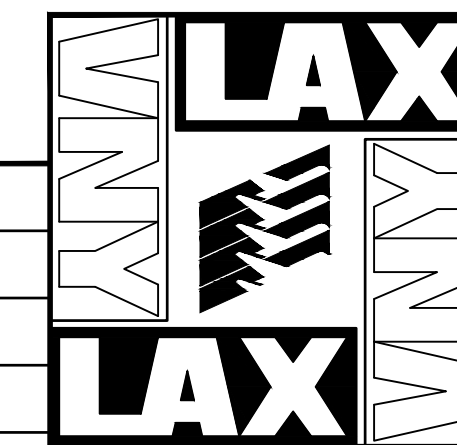


20180064G-41503.DWG 07/21/2020



TYLIN INTERNATIONAL
engineers | planners | scientists
6033 WEST CENTURY BOULEVARD SUITE 605
LOS ANGELES, CALIFORNIA 90045
PHONE (213) 694-3981 FAX (619) 692-0634

REV. NO.	BY	DESCRIPTION	APPROVED	DATE
1		CONFORMED SET		07/10/20

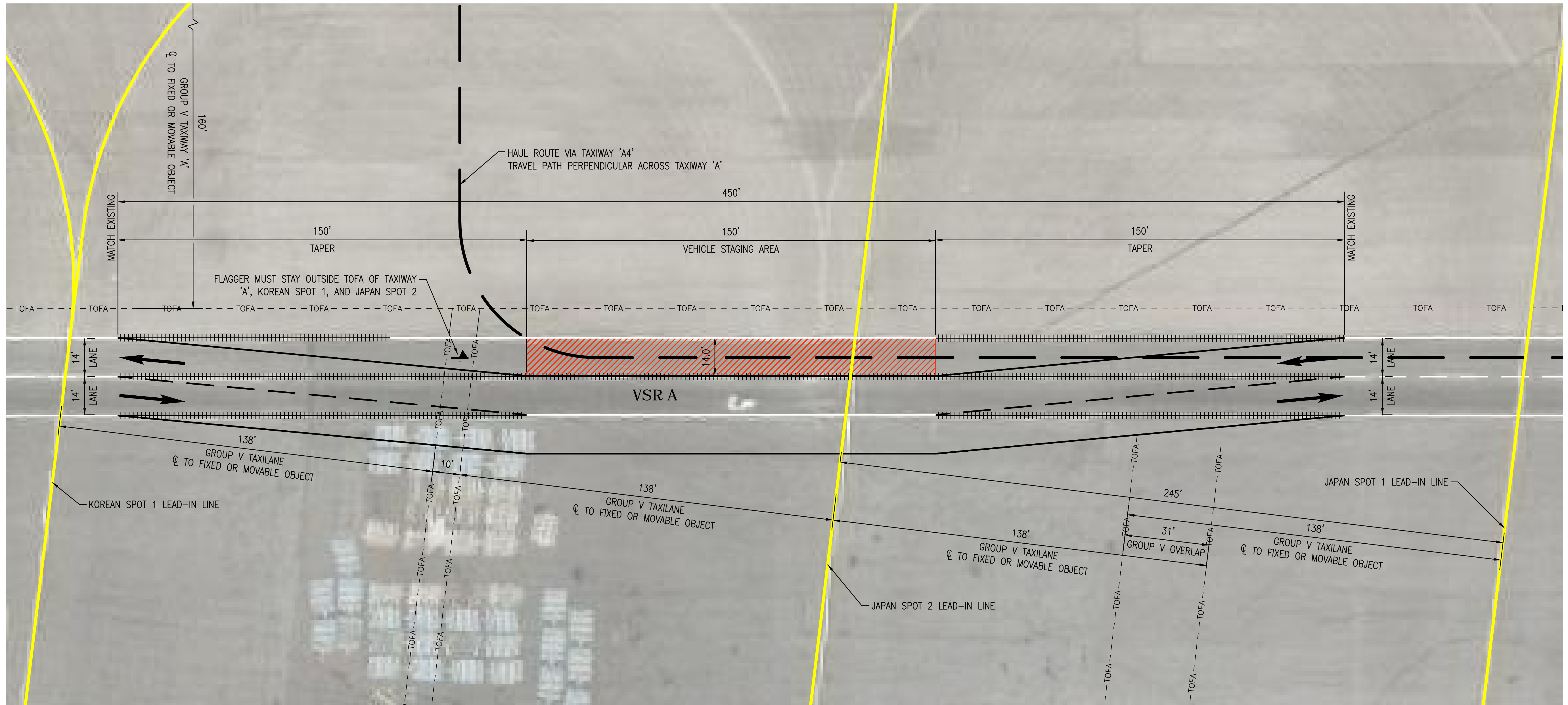
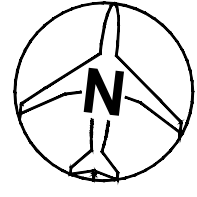


Los Angeles World Airports

**RUNWAY 25L REHABILITATION PROJECT
CONSTRUCTION PHASING PLAN
PHASE 3**

LOS ANGELES INTERNATIONAL AIRPORT

SUBMITTED BY <i>Mark Weidner</i> ASST. CHIEF AIRPORTS ENGINEER		APPROVED BY <i>J. Brown</i> CHIEF AIRPORTS ENGINEER	
DRAWN ACD	CHECKED TJW	PLAN SET NUMBER 43 OF 226	SHEET G415
SCALE AS SHOWN	DATE 07/10/2020	DWG NO. 20180064	
FILE NAME 20180064G-41503.DWG			



LEGEND:

- PROPOSED VEHICLE STAGING AREA
- TAXIWAY/TAXILANE OBJECT FREE AREA
- CONSTRUCTION HAUL ROUTE (INBOUND ONLY)
- REMOVE EXISTING VSR 'A' PAVEMENT MARKING
- EXISTING VSR 'A' SOLID EDGE LINE PAVEMENT MARKING TO REMAIN
- EXISTING VSR 'A' DASHED CENTERLINE PAVEMENT MARKING TO REMAIN
- TEMPORARY VSR 'A' SOLID EDGE LINE PAVEMENT MARKING
- TEMPORARY VSR 'A' DASHED CENTERLINE PAVEMENT MARKING
- TEMPORARY CALTRANS TYPE 1-24 ARROW (24-FT)
- FLAGGER AT VEHICLE CROSSINGS

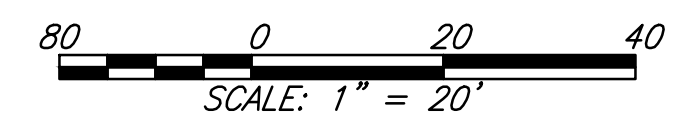
TAPER LENGTH CALCULATION:

$L = \frac{WS^2}{60}$, WHERE: L = TAPER LENGTH
 W = HORIZONTAL SHIFT, 14'
 S = DESIGN SPEED, 25 MPH (20 MPH OPERATING SPEED + 5MPH)

$L = \frac{14 \times 25^2}{60} = 145.83$, USE L = 150'

NOTES:

1. CONTRACTOR SHALL MOVE FROM VEHICLE STAGING AREA IMMEDIATELY TO MAKE WAY FOR ANY PLANES ENTERING OR LEAVING JAPAN SPOT 2
2. CONTRACTOR SHALL RETURN VSR 'A' TO ORIGINAL STATE AFTER THE HAUL ROUTE IS NO LONGER NEEDED
3. TEMPORARY ADVANCE WARNING SIGNS (WEIGHTED) MAY BE PLACED TO THE EAST AND WEST OUTSIDE OF ACTIVE TAXIWAYS AND TAXILANES AS NECESSARY. CONTRACTOR SHALL REMOVE THEM AFTER EACH SHIFT.
4. VSR WIDTH IS MEASURED FROM CENTER OF CENTERLINE MARKING TO INSIDE OF WHITE EDGE MARKING.



**RUNWAY 7R-25L REHABILITATION
 AT LOS ANGELES INTERNATIONAL AIRPORT**

TYLIN INTERNATIONAL
 engineers | planners | scientists
 707 WILSHIRE BOULEVARD SUITE 4900
 LOS ANGELES, CALIFORNIA 90017
 PHONE (213) 694-3981 FAX (619) 692-0634

**THIS EXHIBIT IS FOR PLANNING PURPOSES ONLY.
 CONTRACT DOCUMENTS WILL PROVIDE INSTRUCTION FOR
 CONSTRUCTION, OPERATION, COORDINATION WITH LAWA
 OPERATIONS, AND RESTORATION.**

TITLE TAXIWAY 'A4' HAUL ROUTE VSR 'A' TEMPORARY RELOCATION	EXHIBIT 1 OF 2
SCALE AS SHOWN	DATE 01/31/2019

NOT FOR CONSTRUCTION - THIS DOCUMENT IS A DRAFT AND IS FOR PRELIMINARY USE ONLY.
 CONFIDENTIAL - DO NOT DISTRIBUTE

1/31/2019 - 12:09pm, Drawing: Haul Route - VSR A Temporary Relocation-14by150.dwg, By: TWILKINSON

