



Los Angeles
World Airports

LAX Northside: Argo Drain Sub-Basin Facility (Prop O)

Mitigation Monitoring and Reporting Program

2018 Annual Progress Report

Prepared by Los Angeles World Airports
Environmental Programs Group and
Planning & Development Group
April 2019

Table of Contents

LAX Northside: Argo Drain Sub-Basin Facility (Prop O)

Introduction	3
Project Background	4
MMRP Summary Table Overview	5
Air Quality and Greenhouse Gas (GHG) Emissions	6
Biotic Communities / Endangered and Threatened Species	8
Historic/Architectural and Archaeological/Cultural/Paleontological Resources	9
Geology and Soils	10
Noise	11
Solid Waste	13
Surface Transportation	14
Appendix A – Measures Completed Prior to 2018	16

Introduction

LAX Northside: Argo Drain Sub-Basin Facility (Prop O)

The California Environmental Quality Act (CEQA) requires the adoption of a Mitigation Monitoring and Reporting Program (MMRP) to report on environmental impacts associated with a development project. The adopted MMRP describes the procedures for the implementation of a project's mitigation measures. Monitoring and implementation of all of the measures are the responsibility of Los Angeles World Airports (LAWA), and/or the party implementing the project. LAWA, at its discretion, may delegate implementation responsibility or portions thereof to a licensed contractor or other responsible party.

The primary purpose of this report is to document and report on the status of the current ongoing and recently completed mitigation measures that are applicable to the Argo Drain Sub-Basin Facility (Prop O) project and set forth in the adopted LAX Northside Plan Update MMRP for the period from **January 1, 2018 through December 31, 2018**.

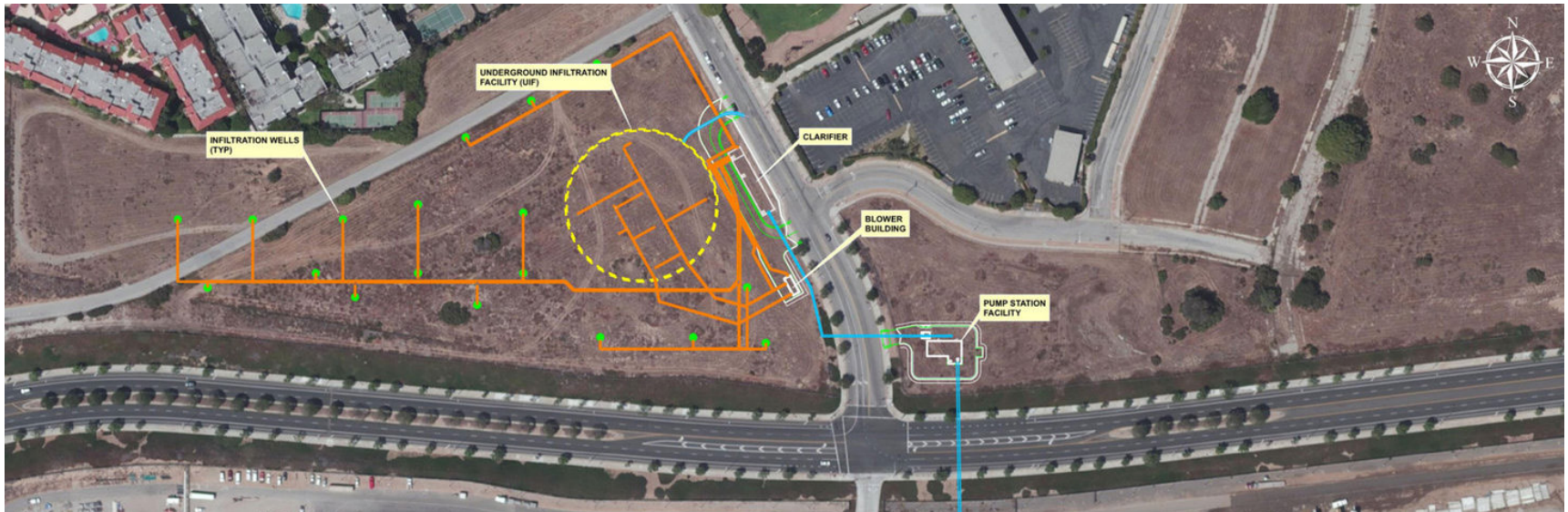
Please note that construction for the Argo Drain Sub-Basin Facility (Prop O) project began in Fall of 2018. Therefore, only a portion of the year is reported in this document.

**To view the project's adopted MMRP and previous annual progress reports, please visit <https://www.lawa.org/en/lawa-our-lax/studies-and-reports/mitigation-monitoring-reporting-program>.

Project Background

LAX Northside: Argo Drain Sub-Basin Facility (Prop O)

The Argo Drain Sub-Basin Facility is a project under the City of Los Angeles' voter approved Proposition (Prop) O, which authorized the issuance of general obligation bonds for projects to comply with the federal Clean Water Act and to protect public health by cleaning up pollution, including bacteria and trash, in the City's watersheds. The Argo Drain Sub-Basin Facility is located in the LAX Northside Subarea and was analyzed under the LAX Northside Plan Update Environmental Impact Report (EIR) that was certified on March 12, 2015 by the Board of Airport Commissioners (BOAC). An addendum to the EIR was made in 2016 to reflect updated details of the Argo Drain Sub-Basin Facility project, which were not previously known at the time of the certified EIR. The addendum updated the EIR to reflect the fact that the project would be jointly undertaken by both LAWA and the City of Los Angeles Department of Public Works, and to incorporate minor design changes to the original assumptions made for the project in the certified EIR. Once completed, the facility will provide LAWA with stormwater quality treatment and will mitigate runoff contributions for approximately 1,100 acres of LAX airport property.



Above Image: Project site diagram (north of Westchester Parkway only) by the City of Los Angeles, Department of Public Works.

MMRP Summary Table Overview

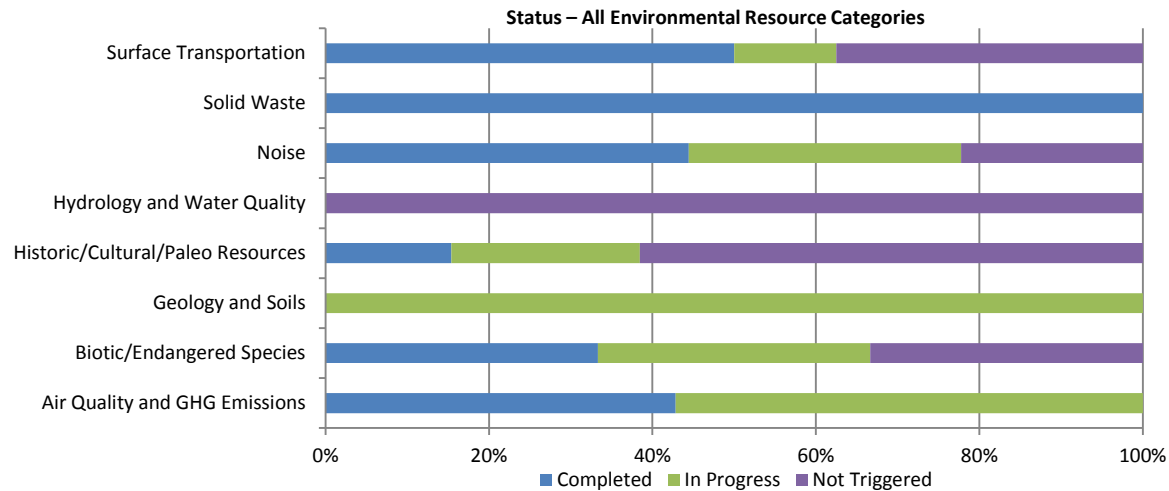
LAX Northside: Argo Drain Sub-Basin Facility (Prop O)

The MMRP Summary Table provides an overview of the progress of the implementation of applicable mitigation measures during the reporting period. The following are included in the table:

- **Resource Category** – lists the environmental factor/resource category
- **Measure ID** – lists the mitigation number as identified in the project’s MMRP
- **Status** – the following categories state the progress of the implementation at time of reporting:
 - **Completed:** Mitigation measure was completed during this reporting period.
 - **In Progress:** Mitigation measure was implemented or is ongoing during the reporting period.
 - **Not Triggered:** Mitigation measure was not triggered during the reporting period. These measures may be triggered in future reporting periods.

Air Quality and Greenhouse Gas (GHG) Emissions

LAX Northside: Argo Drain Sub-Basin Facility (Prop O)



Measure ID	Overview	Status	Summary of how goal was/is being met
MM-AQ-2	Construction-Related Mitigation Measures	Completed	LAWA delivered and implemented a Construction-related Mitigation Plan. Please see MM-AQ-2 sub-measures for information on how construction-related mitigation measures are implemented for this project.
MM-AQ-2[1.3]	Post a sign with contact information for dust complaints	Completed	A sign was posted in compliance with this measure on the Falmouth and 92nd Street gates.
MM-AQ-2[2]	On-Road Mobile Source Controls [Employee Work/Commute Hours and Lunch Trucks]	In Progress	This is a construction contract requirement. Employee shift hours are scheduled outside of peak commuter traffic hours in compliance with this measure. Lunch trucks are allowed on-site in a designated area.

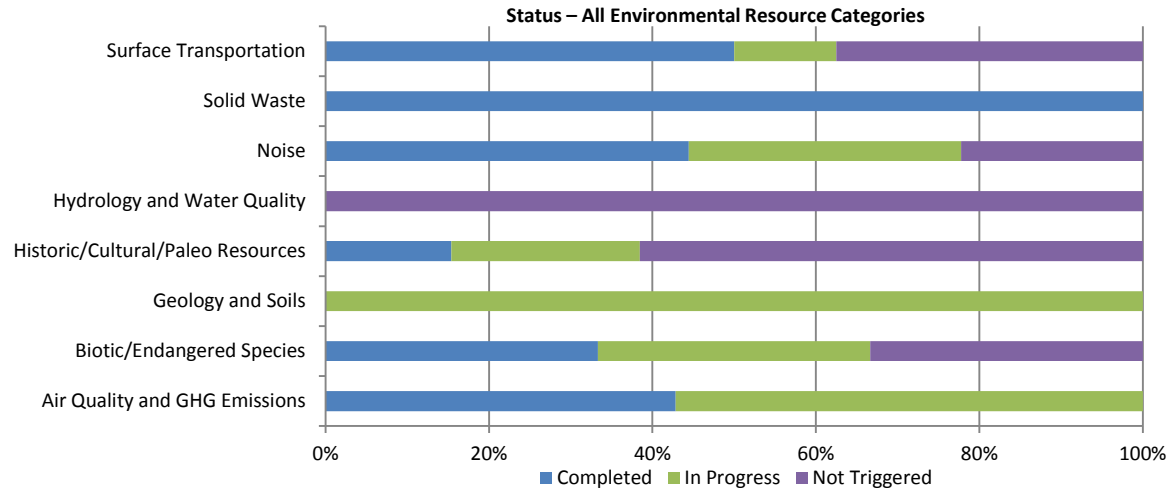
Air Quality and Greenhouse Gas (GHG) Emissions (cont.)

LAX Northside: Argo Drain Sub-Basin Facility (Prop O)

Measure ID	Overview	Status	Summary of how goal was/is being met
MM-AQ-2[3]	Non-road Mobile Source Controls [Prohibit staging/parking on adjacent streets]	In Progress	Construction/employee parking is provided on-site in a designated area.
MM-AQ-2[6]	The contractor/builder shall designate a person(s) to ensure implementation of construction-related measure	Completed	The contractor designated an individual point-of-contact for implementation of MMRPs.
PDF-20	Water three times daily to reduce fugitive dust emissions	In Progress	A water truck is located on-site full time to water three times daily. No violations were noted during the reporting period.
PDF-23	Off-road diesel-powered equipment greater than 50 horsepower shall meet USEPA Tier 3 emission standards	In Progress	The contractor submitted eleven (11) pieces of off-road equipment to LAWA for review and approval. Seven (7) Tier 4 (final) and three (3) Tier 4 (interim) diesel-powered construction equipment were approved per the measure. No violations were noted during the reporting period.

Biotic Communities / Endangered and Threatened Species

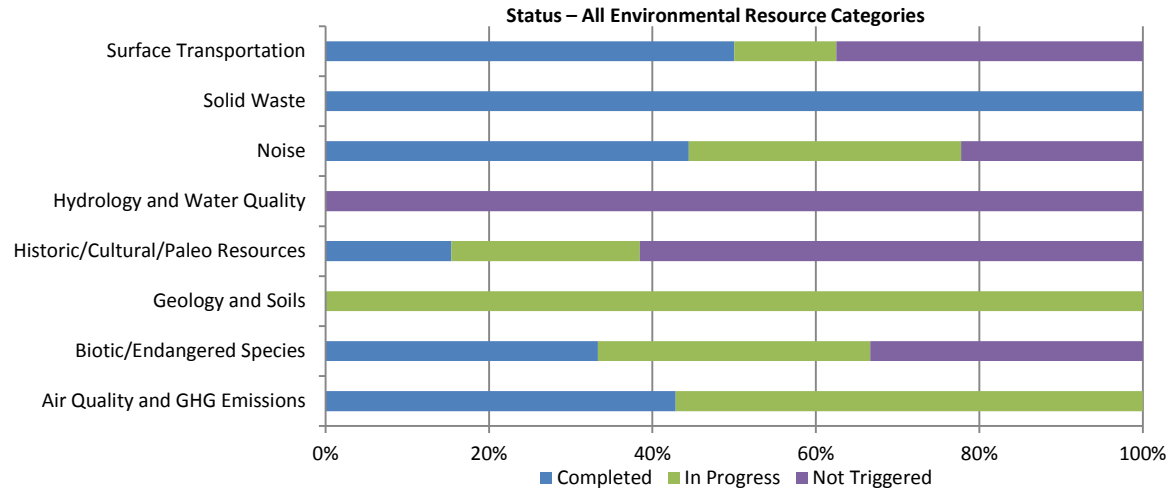
LAX Northside: Argo Drain Sub-Basin Facility (Prop O)



Measure ID	Overview	Status	Summary of how goal was/is being met
MM-BC-9	Removal of Large Shrubs Outside of Nesting Season (Mar. 15 – Aug. 15)	Completed	Large shrubs were removed in December 2018, outside of nesting season.
MM-ET-3	El Segundo Blue Butterfly Conservation: Dust Control	In Progress	This measure is addressed through dust control watering required by PDF-20, which requires that the site be watered three times a day to reduce fugitive dust emissions. No violations were noted during the reporting period.

Historic/Architectural and Archaeological/Cultural/Paleontological Resources

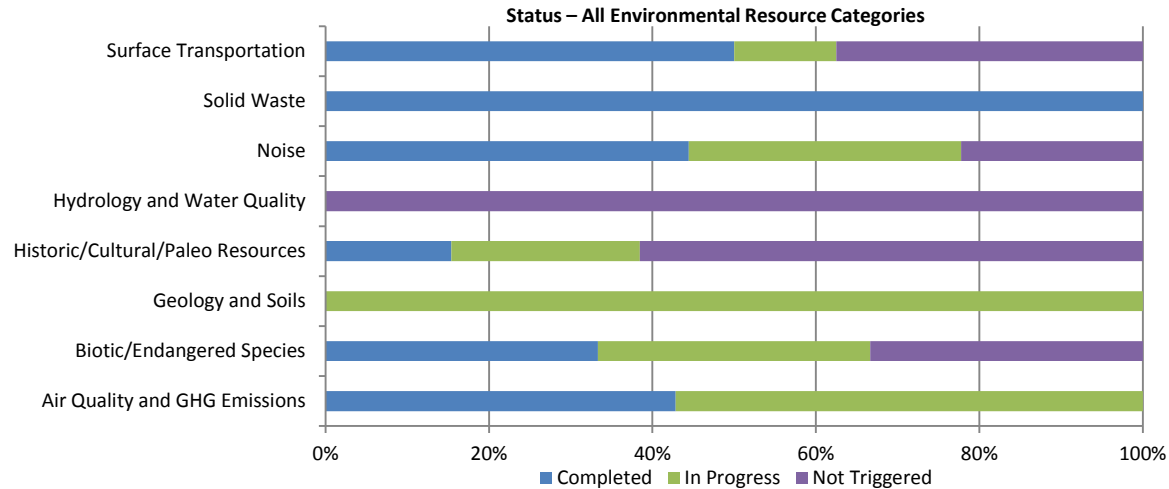
LAX Northside: Argo Drain Sub-Basin Facility (Prop O)



Measure ID	Overview	Status	Summary of how goal was/is being met
MM-HA-5	Monitoring [of Archaeological/Cultural Resources]	In Progress	An archeologist remains on-site for periodic monitoring in compliance with this measure. No resources were found during the reporting period.
MM-HA-7	Administration [of Archaeological/Cultural Resources Mitigation Measures]	In Progress	See MM-HA-5 above.
MM-PA-1	Paleontological Qualification and Treatment Plan	Completed	A paleontologist was retained for this project in compliance with this measure. The Paleontological Management Treatment Plan (PMTP) was originally prepared and revised in December 2005.
MM-PA-2	Paleontological Authorization	In Progress	A paleontologist remains on-site for periodic monitoring in compliance with this measure. No resources were found during the reporting period.
MM-PA-3	Paleontological Monitoring Specifications	Completed	The Paleontological Monitoring Specifications are addressed in the PMTP. See PA-1 above.

Geology and Soils

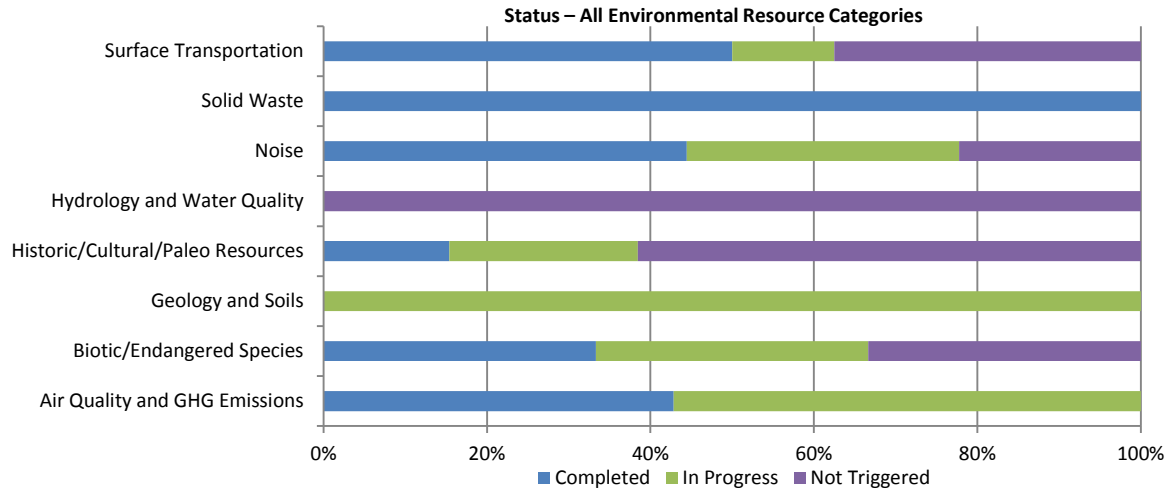
LAX Northside: Argo Drain Sub-Basin Facility (Prop O)



Measure ID	Overview	Status	Summary of how goal was/is being met
PDF-55	Grading would be scheduled for completion prior to the start of the rainy season or temporary erosion control plans would be implemented	In Progress	A Stormwater Pollution Prevention Plan (SWPPP) was prepared for the project and approved by the Regional Water Quality Control Board (RWQCB). Implementation of this measure is through the SWPPP.
PDF-56	The grading contractor will control surface water and the transportation of silt and sediment	In Progress	The control of surface water and transportation of silt and sediment is addressed in the SWPPP.
PDF-57	Backfilling would be used during construction of the project	In Progress	The control of surface water and transportation of silt and sediment is addressed in the SWPPP.
PDF-58	Erosion and sedimentation control measures would be implemented during site grading	In Progress	The control of surface water and transportation of silt and sediment is addressed in the SWPPP.

Noise

LAX Northside: Argo Drain Sub-Basin Facility (Prop O)



Measure ID	Overview	Status	Summary of how goal was/is being met
MM-N (NSP)-2	Shut off idle equipment if within 250' of noise sensitive receptors	In Progress	No construction activity occurred within 250' of noise sensitive receptors. No violations were noted during the reporting period.
MM-N (NSP)-3	Equipment equipped with shields/mufflers that achieve a minimum of 5 dBA reduction and properly maintained.	In Progress	All approved construction equipment includes manufacturer installed mufflers and were well maintained. No violations were noted during the reporting period.
MM-N (NSP)-5	Loading/unloading of construction materials shall be located on-site and away from noise-sensitive uses, to the extent feasible	In Progress	Construction materials were loaded/unloaded on-site. No violations noted during the reporting period.

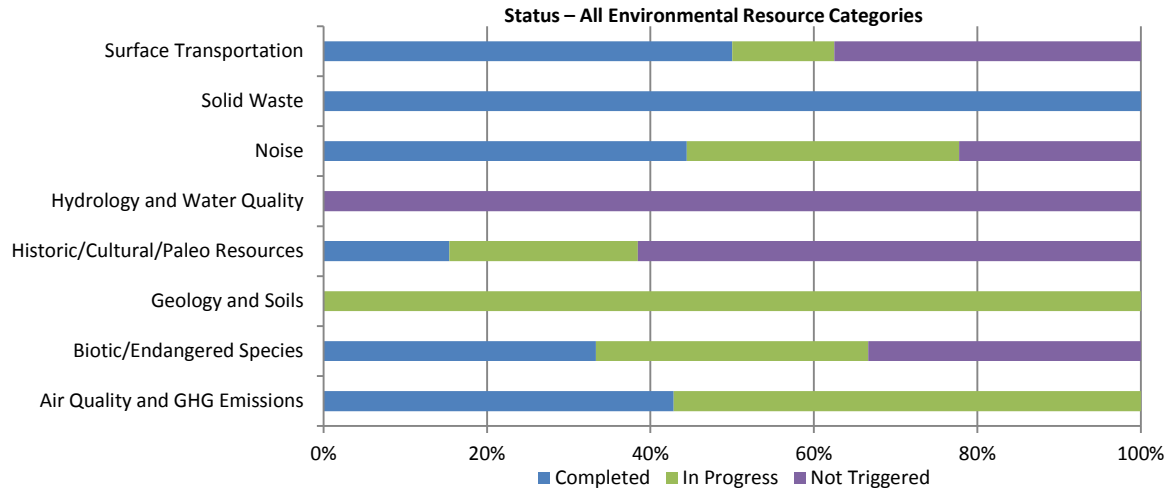
Noise (cont.)

LAX Northside: Argo Drain Sub-Basin Facility (Prop O)

Measure ID	Overview	Status	Summary of how goal was/is being met
MM-N-7	Construction Noise Control Plan	Completed	This is a construction contract requirement. The contractor is required to meet noise control measures (i.e. noise barriers, staging, equipment replacement) in compliance with this measure.
MM-N-8	Construction Staging	Completed	Construction staging was approved by LAWA and located as far from noise-sensitive uses as feasible.
MM-N-9	Equipment Replacement	Completed	Equipment replacement procedures are addressed in the Construction Noise Control Plan. See MM-N-7 above.
MM-N-10	Construction Scheduling	Completed	This is a construction contract requirement. Construction activities are scheduled to avoid sensitive times of the day.

Solid Waste

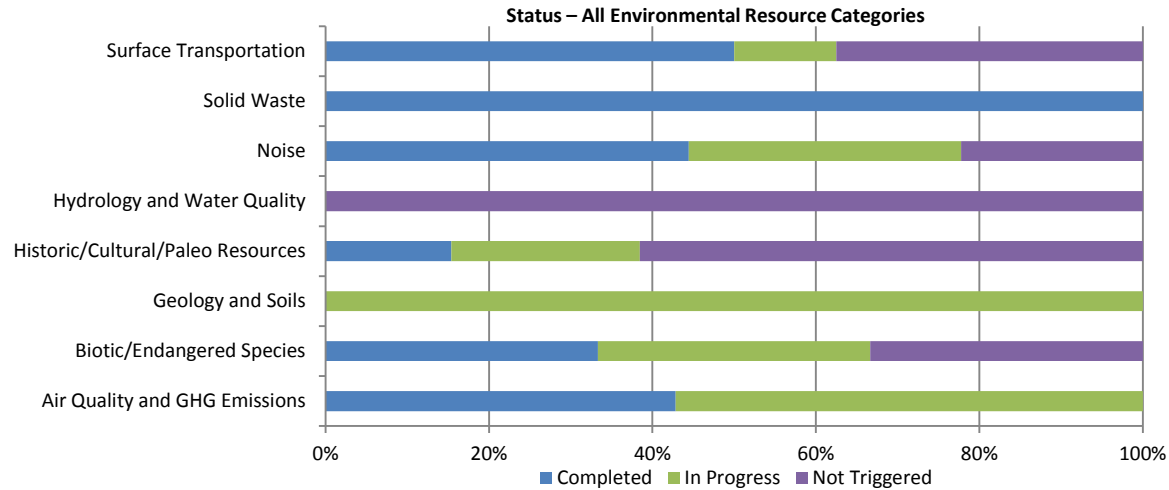
LAX Northside: Argo Drain Sub-Basin Facility (Prop O)



Measure ID	Overview	Status	Summary of how goal was/is being met
SW-3	Requirements for the Recycling of Construction and Demolition Waste	Completed	The approved construction contract requires a minimum of 50% of demolition and construction waste to be recycled in compliance with this measure.

Surface Transportation

LAX Northside: Argo Drain Sub-Basin Facility (Prop O)



Measure ID	Overview	Status	Summary of how goal was/is being met
ST-12	Designated Truck Delivery Hours	In Progress	Deliveries were scheduled outside of the peak hours during the reporting period. No violations were noted.
ST-14	Construction Employee Shift Hours	In Progress	This is a construction contract requirement. Employee shift hours are scheduled outside of peak commuter traffic hours in compliance with this measure. Waivers require approval from LAWA's Coordination and Logistics Management (CALM) Office.
ST-16	Designated Haul Routes	Completed	The project's haul routes were approved by the Los Angeles Department of Building and Safety's (LADBS) Board of Building and Safety Commission in March 2017. No hauling occurred during the reporting period.

Surface Transportation (cont.)

LAX Northside: Argo Drain Sub-Basin Facility (Prop O)

Measure ID	Overview	Status	Summary of how goal was/is being met
ST-18	Construction Traffic Management Plan	Completed	This is a construction contract requirement. LAWA's Coordination and Logistics Management (CALM) team is responsible for reviewing Area Shutdown Requests (ASRs), which delineate traffic control measures on- and off- airport property. The ASRs effectively serve as construction traffic management plans. During the 2018 reporting period two (2) ASRs were approved by CALM for this project.
ST-22	Designated Truck Routes	Completed	The project's haul routes were approved by the Los Angeles Department of Building and Safety's (LADBS) Board of Building and Safety Commission in March 2017.

Appendix A

Measures Not Triggered in 2018

Appendix A

Measures Not Triggered in 2018

Appendix A provides a list of mitigation measures that were completed prior to the 2018 reporting period. For more information on these measures, please see previous annual progress reports .

Measure ID	Resource Category	Overview
PDF-42	[Biotic Communities]	Pest control and no use of pesticides
PDF-82	Hydrology and Water Quality	Dewatering per Regional Water Quality Control Board requirements if encountered
MM-HA-6	Historic/Architectural and Archaeological/Cultural Resources	Excavation and Recovery
MM-HA-8	Historic/Architectural and Archaeological/Cultural Resources	Archaeological/Cultural Monitor Report
MM-HA-9	Historic/Architectural and Archaeological/Cultural Resources	Artifact Curation
MM-HA-10	Historic/Architectural and Archaeological/Cultural Resources	Archaeological Notification
MM-N (NSP)-1	Noise	Minimum 10' high noise barriers wherever construction activities are within 250' of noise sensitive receptors
MM-N (NSP)-4	Noise	Locate stationary equipment as far from noise sensitive receptors as possible
PA-4	Paleontological Resources	Paleontological Resources Collection

Appendix A

Measures Not Triggered in 2018

Measure ID	Resource Category	Overview
PA-5	Paleontological Resources	Fossil Preparation
PA-6	Paleontological Resources	Fossil Donation
PA-7	Paleontological Resources	Paleontological Reporting
ST-9	Surface Transportation	Construction Deliveries Requiring Lane Closures
ST-17	Surface Transportation	Maintenance of Haul Routes
ST-19	Surface Transportation	Closure Restrictions of Existing Roadways