



# Airports Development

Executive Management

Program Status Report

January 31, 2011

---

## TABLE OF CONTENTS

Project Status	_____	3
Work in Progress	_____	32
Schedule	_____	34
Financial	_____	43
OCIP	_____	69
MWBE/DBE	_____	72

## ELEMENT OVERVIEW

### **Purpose**

This report is a tool to provide status of the Capital Projects for the Airports Development Group. The report presents status per project followed by the Master Program Schedule, a Financial section with Budget, Cash Flow and Change Orders, OCIP, MWBE/DBE, and a section listing Projects in Definition.

### **Airside Element**

The Airside Element consists of multiple projects necessary for accommodating the movement of large aircraft between the north and south runways; reconfiguring traffic movement to accommodate the Tom Bradley International Terminal (TBIT) expansion and modernization program; and provide airfield improvements as required by Airfield Operations, the Federal Aviation Administration and other Federal and State regulatory agencies.

### **Bradley West Element**

The Bradley West Element provides for certain improvements identified in the approved LAX Master Plan, specifically related to development of new aircraft gates at the Tom Bradley International Terminal. The new gates will support the airport's ability to effectively and efficiently accommodate new large aircraft, such as the Airbus A380, Boeing 747 and Boeing 747-8. In addition, the project calls for substantial improvements related to the concourses and central core area of the Tom Bradley International Terminal, including:

- construction of new north and south concourses at the terminal, west of the existing concourses, which would be removed;
- construction of eight aircraft gates and associated loading bridges and apron areas, along the west side of the new terminal concourses;
- relocation and consolidation of existing aircraft gates along the east side of the Tom Bradley Terminal;
- renovation and enlargement of the existing U.S. Customs and Border Protection areas within the central core of the terminal; and
- construction of the secure passenger corridors between Terminals 3 and 4, and the Bradley Terminal.

---

## ELEMENT OVERVIEW - Continued

### **Central Utility Plant (CUP) Replacement Element**

The CUP Replacement Element includes replacing the existing CUP, constructed in 1961, and the co-generation facility, brought into service in 1985, which are considered obsolete and inefficient relative to present-day technology, the distribution network between the CUP and the terminals, and various mechanical/electrical infrastructure improvements within the terminals.

### **Utilities and Infrastructure Element**

These capital improvement projects are critical utility and infrastructure elements that support Terminal and Airport operations within the Central Terminal Area (CTA). Current construction projects include the In-Line Baggage Screening System program consisting of the construction of fully integrated Transportation Security Administration (TSA) screening equipment in Terminal 3 and removal of lobby machines, plus, the IT Fiber Loop Backbone project which will provide new connectivity between all Terminals and the Telecommunication Building.

### **Landside Element**

The Landside Element undertakes capital projects designed to provide for the efficient and effective movement of people through the airport; and to provide convenient parking for individuals using the airport. Landside projects are typically related to parking lots, public transportation, train stations, tank farms, warehouse and cargo areas and access roads and perimeter fencing.

### **Residential / Soundproofing Element**

LAWA has implemented a voluntary Airport Residential Soundproofing Program (RSP) for aircraft noise impacted areas in the City of Los Angeles. This program is for impacted homes adjacent to the Los Angeles International Airport (LAX) and Van Nuys (VNY).

---

## ELEMENT OVERVIEW - Continued

### **Terminals Element**

Most of LAX's Terminals have been serving their purpose without major renovations or modernization efforts over the years. As needs change, the Terminal spaces and structures need repairs, upgrades, modernization, and standardization to satisfy these changing demands. From modernizing elevators and escalators with standardized devices to updating fire/life safety systems, the Terminals Element is focused on implementing these necessary improvements.

### **TBIT Renovation Element**

The Tom Bradley International Terminal (TBIT) was designed in 1982 and constructed for the opening of the 1984 Olympics that were held in Los Angeles. In the intervening years, other than minor improvements and concessions additions, the terminal had not been remodeled or modernized and did not provide comparable standards, amenities, and aesthetics realized at other international and national airports around the world. The aesthetics and finishes at TBIT were based on 1980s design. The lighting in most areas was not up to current standards, the paging system was inadequate, and some areas did not meet current building code requirements including the Americans with Disabilities Act (ADA). Contact gates at TBIT were inadequate to accommodate the "New Large Aircrafts", e.g. Airbus A380. Lastly, due to the events following September 11, 2001, the Transportation Security Administration (TSA) mandated requirements for in-line 100% checked baggage screening of the outbound baggage system at TBIT. The proposed project addresses these deficiencies and new security baggage screening requirements through a comprehensive modernization and upgrade of TBIT.

### **Work in Progress**

This section lists the projects that are in various stages of pre-development. Typically, these projects represent efforts for which LAWA has committed funding for the design; not the construction. A project in this category will experience variability as the design is refined. If approved, projects in Work in Progress will be moved into the appropriate execution element. If not approved, projects will be dropped from this report.

---

## AIRSIDE ELEMENT - Construction Support Facilities (M209A)

### **Project Description**

The project includes the construction of a new aircraft parking ramp/block, new emergency exits for American Airlines Maintenance Hangar, airfield security fencing, building modifications, and other miscellaneous construction activities as may be required.

### **Planning and Programming Status**

Project Definition is complete.

### **Design Progress**

Design is 100% complete.

### **Construction Progress**

First construction contract awarded to Griffith Construction on April 21, 2009.

Notice to Proceed issued June 29, 2009.

Construction is 96% complete.

### **Budget Status**

This project is anticipated to complete on budget.

### **Schedule Status**

The project's original completion date of May 25, 2010 has been extended to February 2011 to accommodate ASDE-X and replacement FAA fiber work.

### **Issues**

## AIRSIDE ELEMENT - Crossfield Taxiway Project (M101A)

### **Project Description**

The project entails the construction of a 3,437-foot-long by 100-foot-wide taxiway that connects Taxiway 'B' on the south and Taxiway 'E' on the north. To facilitate this construction, there will be removal of existing deteriorated concrete pavement and the removal of asphalt pavement replaced with Portland Cement Concrete (PCC) and asphalt concrete pavement. This project also constructs a new parallel service road and a replacement apron for Remain Overnight (RON) and the following facilities:

- \* Realignment of World Way West and two bridges over the road; one for aircraft crossing as a part of taxiway C13 and the other for vehicular traffic;
- \* Taxiway centerline electrical, lighting and signage;
- \* Pavement markings, including centerline, edge striping and edge reflectors; and
- \* Installation of redesigned drainage and modifications to existing utilities.

### **Planning and Programming Status**

Project Definition is complete.

### **Design Progress**

Design is 100% complete.

### **Construction Progress**

Construction contract awarded to R & L Brosamer Inc. on March 23, 2009.

Construction Notice to Proceed issued May 11, 2009.

Taxiway 'R' opened on May 24, 2010.

Construction is 100% complete.

### **Budget Status**

The final change orders are being negotiated. This project is expected to complete under budget.

### **Schedule Status**

Anticipated project close-out is February 2011.

### **Issues**

---

## **AIRSIDE ELEMENT - LAX Aircraft Rescue and Fire Fighting Facility (M107A)**

### **Project Description**

The new Aircraft Rescue and Fire Fighting Facility (ARFF) is proposed to be constructed as a replacement for the existing Fire Station No. 80. This new facility will be located on World Way West just west of Remain Over Night (RON) aircraft aprons situated relative to the mid-points of the outmost runways (Runway 6L/24R on the north and Runway 7R/25L on the south). The proposed ARFF would provide approximately 27,500 square feet of administrative office area and station living quarters within a 2-story structure, six bays for emergency vehicles along with a service bay, storage area for various emergency response equipments, and briefing and training rooms.

### **Planning and Programming Status**

Project Definition is complete.

### **Design Progress**

Design is 100% complete.

### **Construction Progress**

Construction contract awarded to Tobo Construction on June 10, 2009.

Administrative Notice to Proceed issued July 10, 2009.

Construction Notice to Proceed issued September 4, 2009.

Construction is 100% complete.

The Grand Opening of the LAX Aircraft Rescue and Firefighting Station 80 was held on November 22, 2010.

### **Budget Status**

This project is expected to complete under budget.

### **Schedule Status**

Anticipated project closeout is February 2011.

### **Issues**



## AIRSIDE ELEMENT - Bradley West - Aprons (M205A)

### **Project Description**

The Bradley West Aprons project contains an East and West component. The Bradley West Aprons project consists of approximately 34,000 square yards of pavement and associated drainage covering the aprons on the west side of the north and south Concourses as well as the apron west of the Core. This apron construction includes all grading, utilities, airfield signage and lighting; construction of LADWP power and communication ductbanks; and the LAWA power and communication ductbanks.

The Bradley East Aprons project entails construction of approximately 121,000 square yards of pavement and associated drainage from the edge of the new Concourses to the edge of Taxilanes C10/D10. It includes all grading, drainage, utilities, airfield signage and lighting; construction of LADWP power and communication ductbanks; and the LAWA power and communication ductbanks.

### **Planning and Programming Status**

Project Definition is complete.

### **Design Progress**

West Aprons awarded design is 100% complete.  
East Aprons design is 50% complete.

### **Construction Progress**

West Aprons - Construction on April 8, 2010 through June 8, 2012  
The Bradley West Gates and Core contracts awarded to Walsh-Austin.

East Aprons -  
No construction contracts awarded.

### **Budget Status**

This project is tracking on budget.

### **Schedule Status**

This project progressing on schedule.

### **Issues**

## AIRSIDE ELEMENT - Taxilane 'S' (M204A)

### **Project Description**

This project undertakes the relocation of certain ancillary and support facilities; and constructs a 3,785-foot long Taxilane to connect Taxiway 'B' on the south and Taxiway 'E' on the north. Taxilane 'S' will be constructed as part of a 400 foot wide Portland Cement Concrete (PCC) paved strip which will be the first part of the future Dual Taxilane / Taxiway System between the proposed Midfield Satellite Concourse and the Tom Bradley International Terminal. The centerline is located 242 feet west of the existing Taxiway 'Q' centerline. A 169-foot-Object Free Area (OFA) will be provided on the east side of the Taxilane 'S' centerline in accordance with the FAA approved Airport Layout Plan (ALP). This construction also includes the relocation of fuel lines and other utilities, all grading, airfield signage and lighting, construction of LADWP power and communication ductbanks; and the LAWA power and communication ductbanks. Additionally, Taxiway D will be extended approximately 1,000 feet west from Taxiway Q.

The project also includes the construction of approximately 60,000 square yards of pavement and associated drainage covering the aprons on the west side of the north and south Concourses as well as the apron west of the Bradley Core. This apron construction includes all grading, utilities and airfield signage; construction of LADWP power and ductbanks; and the LAWA power and communications ductbanks.

### **Planning and Programming Status**

Project Definition is complete.

### **Design Progress**

Design is 100% complete.

### **Construction Progress**

Construction contract awarded to Flatiron West, Inc. on December 7, 2009.

Administrative Notice to Proceed issued on December 18, 2009.

Construction Notice to Proceed issued on March 1, 2010.

Construction is 24% complete.

### **Budget Status**

Additional funds may be required for the changes that are currently being negotiated for LAWA Power Electrical Duct Banks and New Natural Gas Line.

---

## AIRSIDE ELEMENT - Taxilane 'S' (M204A) - Continued

### **Schedule Status**

Taxilane 'S' is anticipated to open May 2011. However, schedule impacts from various sources including additional contaminated soil, World Way West utilities, resequencing the DWP duct bank installation, and guard post 5 design revisions are threatening this completion date. As an attempt to mitigate schedule impacts, existing Taxiway S will remain closed permanently. Recovery schedule was submitted by Flatiron and is currently under review.

### **Issues**

- \* New natural gas service to the Bradley West across new Taxilane 'S' will have schedule and cost impacts.
- \* New storm drain construction south of the Concourse Construction Package (CCP) may need to be accelerated to provide construction access for Walsh Austin.
- \* Concrete batch plant was delivered to the site in January 2011 however, it is not operational due to Building and Safety electrical permitting issues. Paving is anticipated to begin in early February 2011.
- \* LAWA is evaluating whether to accelerate the Contractor's paving operations to meet the originally scheduled opening of Taxilane S in May 2011.

## AIRSIDE ELEMENT - Taxilane 'T' (M306A)

### **Project Description**

The project consists of the construction of a 3,166-foot long Taxilane to connect Taxiway 'C' on the south and Taxiway 'D' on the north. Taxilane 'T' will be constructed as part of a 300 ft. wide Portland Cement Concrete (PCC) paved strip which will be the second part of the future Dual Taxilane / Taxiway System replacing existing Taxiways 'Q' and 'S', west of reconfigured Tom Bradley International Terminal (TBIT). The Taxilane 'T' centerline is located 818 feet west of the existing Taxiway 'Q' centerline. A 169-foot-Object Free Area (OFA) will be provided on the west side of the Taxilane 'T' centerline in accordance with the FAA approved Airport Layout Plan (ALP). This construction also includes the Taxilane "T" Service Road, the relocation of fuel lines and other utilities, all grading, airfield signage and lighting, construction of LADWP power ductbanks; and the LAWA power and communication ductbanks. This Scope of work also includes associated projects which consist of the Demo AA Low Bay Hanger, Relocate and Demo H2O Deluge System, Demo Existing Sky Chef airline catering facility, Demo AA (former TWA) Hangar, an Emission Reduction Credit and Site Restoration of Southwest Apron Remain Overnight (RON) parking area.

### **Planning and Programming Status**

Project Definition is complete.

### **Design Progress**

The design for the Southwest Apron Remain Overnight (RON) parking area was awarded to Post, Buckley, Schuh & Jernigan, Inc. (PBS&J) in September 2010. Task Order 1 was approved in January 2011.

The design contract for Taxilane T was awarded to Kimley Horn & Associates on November 15, 2010. Task Order 1 was finalized at the end of January 2011.

The design of the Demo AA Low Bay Hangar and deluge system will be completed at the end of January 2011 by AECOM, Inc.

### **Construction Progress**

No construction contracts awarded.

### **Budget Status**

This project is tracking on budget.

### **Schedule Status**

Notice to Proceed for Kimley-Horn and Associates was issued in December 30, 2010 for the design of Taxilane T.

---

## AIRSIDE ELEMENT - Taxi Lane 'T' (M306A) - Continued

### Issues

Delayed availability of AA Leaseholds may impact project schedule.

---

## AIRSIDE ELEMENT - Demolition of Existing Concourses (M210A)

### **Project Description**

Upon completion of the new Bradley West Concourses, this project includes demolition of the existing concourses with the exception of Gate 123, demolition of any existing utilities and restores the site to an appropriate state for Apron construction.

### **Planning and Programming Status**

Project Definition is complete.

### **Design Progress**

No design contract awarded.

### **Construction Progress**

No construction contract awarded. Currently evaluating the merits of adding this scope to the Walsh Austin Joint Venture contract.

### **Budget Status**

This project is tracking on budget.

### **Schedule Status**

This project is progressing on schedule.

### **Issues**

---

## **AIRSIDE ELEMENT - Pavement Management Program - VNY Taxi Lane A2 Rehabilitation and RSA Improvements (A010A)**

### **Project Description**

This project will rehabilitate the existing asphalt concrete pavement for Taxi Lane A2 and construct a dual taxi lane, among other improvements. Additionally, this project will improve airfield lighting and signage for Taxi Lane A2 and improvements on Runway Safety Area (RSA) for Runway 16L/34R.

### **Planning and Programming Status**

Project Definition is complete.

### **Design Progress**

Design is 100% complete.

### **Construction Progress**

Construction contract awarded to Griffith Company on August 2, 2010.  
Administrative Notice to Proceed was issued on September 7, 2010.

### **Budget Status**

This project is tracking on budget.

### **Schedule Status**

Construction Notice to Proceed was issued in November 8, 2010. The project's original completion date of February 2011 was extended to March 2011 due to rain delays.

### **Issues**

## **BRADLEY WEST ELEMENT - Bradley West Gates (M201A)**

### **Project Description**

The project consists of the construction of new double-loaded North and South Concourses at Tom Bradley International Terminal (TBIT). The configuration of the concourses will be based upon the approved aircraft parking layout consisting of nine (9) A380 gates and five (5) Airplane Design Group (ADG) V gates and three (3) narrow-body gates. In addition, the work will consist of constructing approximately 540,000 sq ft of space for passenger services (concessions, toilets etc.), building systems (mech/elect/plumbing), building maintenance, airline operations, retail/food service concessions, concessions storage areas, back of house secured circulation space and airline lounges. The project will also include Building Systems (pedestrian transportation systems, HVAC, electrical and plumbing, drainage, lighting), Telephone System, Life Safety Systems (PA and smoke/fire detection, alarm and sprinkler) and Terminal Systems such as Electronic Visual Information Display System (EVIDS), baggage conveyance, building management systems, access control, intrusion alarm, etc.

### **Planning and Programming Status**

Project Definition is complete.

### **Design Progress**

Design is 90% complete.

### **Construction Progress**

Heavy steel erection complete on North Concourse; Steel erection commenced South Concourse.  
Soil / Area remediation due to rain substantially complete.  
Slab on Grade / Slab on Metal Deck pours continue in the North Concourse.

MEP activities have commenced in the North Concourse.

Foundation footings in South Concourse continue.

Utility relocation/work continues in the North and South Utility Corridors.

### **Budget Status**

This project is anticipated to complete on budget (inclusive of contingency reserves).

Component Guaranteed Maximum Price 01 through 12 have been approved by the Board.

Buy out is 89% complete.



---

## BRADLEY WEST ELEMENT - Bradley West Gates (M201A) - Continued

### Schedule Status

Gate 134 Substantial Completion  
Target Date: 08/01/12      Forecast Date: 09/25/12

West Gates Substantial Completion  
Target Date: 12/12/12      Forecast Date: 12/12/12

East Gates (North and South) Substantial Completion  
Target Date: 10/19/13      Forecast Date: 11/26/13

### Issues

WAJV has not submitted a schedule update for the month of December 2010. The submittal requirement of five (5) days before the end of each month has been relaxed for this specific schedule submittal so that WAJV can work on the Bulletin 0 Time Impact Analysis (TIA). WAJV will resume the schedule update process once initial effort for the Bulletin 0 process is underway.

## **BRADLEY WEST ELEMENT - Bradley West Core Improvements (M203A)**

### **Project Description**

This project will provide improvements to the Federal Inspection Service (FIS) facilities in Tom Bradley International Terminal (TBIT) and allow for the development of new 693,000 sf improved departure level (post security) passenger amenities, including new restrooms, concessions, airline lounges, and administrative offices within TBIT's existing north and south concourses; renovates, improves and enlarges the space used by the FIS and the Customs and Border Patrol (CBP); constructs secure/sterile passenger corridors between TBIT and Terminals 3 and 4; and renovates and improves existing facilities throughout TBIT including re configuration of the security screening checkpoint.

### **Planning and Programming Status**

Project Definition is complete.

### **Design Progress**

Design is 80% complete.

### **Construction Progress**

Work on Junction Structures / TBIT Wall demolition / Core excavation continues  
Core Basement Wall pours have commenced

Wall / Spread footings in all areas continue

Early Steel erection has commenced

### **Budget Status**

This project is anticipated to complete on budget (inclusive of contingency reserves).

Component Guaranteed Maximum Price 01 through 13 have been approved by the board.

Buy out is 58% complete.

### **Schedule Status**

New Core Substantial Completion  
Target Date: 12/12/12 Current Forecast Date: 01/18/13

\*\*Current forecast date includes the results of recovery planning efforts.

---

## BRADLEY WEST ELEMENT - Bradley West Core Improvements (M203A) - Continued

### Issues

The following items are on the program critical path, and currently drive the Milestone #3 completion date. Completion of Junction Structure installation / TBIT Wall Demolition / Core Excavation (All related construction activities) Fabrication & Delivery of Core Steel. Remedial efforts have been in place, and include a 24-hour operation when conditions are allowable.

WAJV has not submitted a schedule update for the month of December 2010. The submittal requirement of five (5) days before the end of each month has been relaxed for this specific schedule submittal so that WAJV can work on the Core Bulletin 0 Time Impact Analysis (TIA). WAJV will resume the schedule update process once initial effort for the Core Bulletin 0 process is underway.

## **BRADLEY WEST ELEMENT - Construction Traffic Mitigations (M203B)**

### **Project Description**

The general scope of work involves improving roadway capacity at the two intersections identified by the Bradley West Project Environmental Impact Report as being affected by the Bradley West construction activities and enhancing safety at the future construction contractor parking area.

### **Planning and Programming Status**

Project Definition is complete.

### **Design Progress**

Design is 100% complete.

### **Construction Progress**

BOAC awarded construction contract DA-4478 to Griffith Company on June 28, 2010.

Administrative Notice to Proceed (NTP) was issued on July 29, 2010 and construction NTP issued September 7, 2010.

Overall construction is approximately 60% complete.

The widening for the first phase (Imperial Hwy. and Main St.) and the third phase (Pershing Dr. and Bradley West Dr.) were completed in January 2011.

### **Budget Status**

This project is tracking on budget.

### **Schedule Status**

The overall project is on schedule to be complete in May 2011.

### **Issues**

ADG continues to work with the contractor, Bureau of Street Lighting, Los Angeles Department of Transportation, and Los Angeles Department of Water and Power to facilitate installation of the permanent traffic signals and street lights and to complete the second phase (Imperial Hwy. and Pershing Dr.).

---

## **BRADLEY WEST ELEMENT - Art In Public Places (M308A)**

### **Project Description**

The program, part of the City of Los Angeles commitment to the community, commissions local artists to produce original artwork for public places. The City passed a law in 1989 allocating one percent of all capital improvement costs to commission art in public places. The Department of Cultural Affairs administers this program through its Public Art Division, aiming to utilize this one percent to contribute enduring, contemporary art experiences to public facilities in the City.

### **Planning and Programming Status**

Proposals from six nominated Los Angeles-based artists have been received and are being reviewed by the Art Oversight Committee (AOC).

### **Design Progress**

No design contract awarded.

### **Construction Progress**

No construction contract awarded.

### **Budget Status**

This project is tracking to the budget.

### **Schedule Status**

This project is anticipated to complete on schedule.

### **Issues**

## CUP REPLACEMENT ELEMENT - Central Utility Plant (C001A)

### **Project Description**

The project provides a replacement Central Utility Plant (CUP) to supply heating hot-water and chilled water to the Central Terminal Area (CTA); the required chillers, pumps, generators, boilers and piping to produce and distribute the hot and cold water; and gas turbine driven generators with heat recovery steam generators (co-generation).

The project also includes:

Temporary Power and Associated Relocations Project (TPAR): Construction of a new substation to feed power to the existing CUP and installation of replacement switchgear to allow demolition of the CUP Maintenance Shop Building. This work also includes installing new underground utilities to replace the existing utilities within the footprint of the new CUP.

Utility Distribution System: This project includes interconnection to existing piping as well as providing completely new services to Bradley West and the existing terminals and the replacement or bypassing of some existing piping.

Demolition: Demolition of the existing CUP, cooling towers, an electrical substation and existing maintenance buildings located at the footprint of the new CUP.

Facility Management and Control System (FMCS): FMCS to be located in the control room and related control equipment to be furnished for installation in the mechanical rooms of the terminals.

### **Planning and Programming Status**

Project Definition is complete.

### **Design Progress**

Design is complete for award to the design build contractor. Design-Builder is now proceeding to develop Construction Documents.

### **Construction Progress**

The Walsh-Austin Joint Venture (WAJV) is responsible for the construction of the Temporary Power and Associated Relocations Project (TPAR). TPAR construction is delayed until early March 2011 due to weather impacts and contractor delays in the completion of their work.

CUP Design Builder Clark/McCarthy Joint Venture (CMJV) was issued an NTP on January 24, 2011. CMJV's on-site investigation is anticipated to commence early February 2011.

CMJV has initiated their procurement of the CUP Interim Maintenance Building. Award anticipated early March 2011.

---

## **CUP REPLACEMENT ELEMENT - Central Utility Plant (C001A) - Continued**

### **Budget Status**

This project is tracking to budget.

### **Schedule Status**

CUP Design Builder Clark/McCarthy Joint Venture (CMJV) was issued NTP on January 24, 2011. CMJV design and construction schedule submittals are required 30 and 60 days respectively after NTP.

CUP Interim Maintenance Building (IMB) is on the project critical path. Facility fabrication, delivery and construction bid procurement is underway. CMJV schedule reflects award anticipated early March, delivery complete early May and construction complete late October, 2011.

### **Issues**

TPAR current construction delay and potential schedule impact is currently under- review.

---

## UTILITIES & INFRASTRUCTURE ELEMENT - Airport Response Coordination Center (ARCC) (U009A)

### **Project Description**

This project will provide a centralized response coordination center on the 4th floor of the existing Badging Building located at 7333 World Way West at Los Angeles International Airport (LAX). The project will improve efficiency and communication for day to day operations and response to incidents by collocating various shared operational functionalities into one consolidated location. The new Airport Response Coordination Center will co-locate Airfield Operations, Terminal Operations, Construction and Maintenance, non-emergency Airport Police functions, and traffic management staff into a joint use facility. This new office environment, will utilize information technology for audio, video, CCTV, voice, network, Cable TV connections, PCs, and associated video wall and peripherals to improve situational awareness and communication among various Divisions and staff at LAX.

### **Planning and Programming Status**

Project Definition is complete.

### **Design Progress**

Design is 100% complete.

### **Construction Progress**

The construction contract was awarded to Technion Contractors, Inc. (TCI) on May 17, 2010 and the Notice to Proceed for construction was issued to TCI on June 14, 2010.

The ARCC went operational on December 15, 2010.

The contractor is completing final punchlist work to obtain final building permit sign-off.

### **Budget Status**

This project is tracking on budget.

### **Schedule Status**

This project was substantially completed and the ARCC began live operations on December 15, 2010.

### **Issues**

Problems with existing backup power systems at the Admin West Data Center (AWDC) require major electrical equipment replacement for full IT system redundancy. TCI is currently procuring an Uninterrupted Power Supply (UPS) unit for AWDC to provide necessary IT system redundancy.



---

## **LANDSIDE ELEMENT - AOA Perimeter Fence (World Way West) Phase 3 (L003A)**

### **Project Description**

This project will enhance approximately 2.2 miles of fence from Taxiway AA to Coast Guard Road of LAX and will be constructed in the same manner as Phases 1 and 2. This project also provides security lighting and electrical duct banks along portions of World Way West from Taxiway AA to Coast Guard Road.

### **Planning and Programming Status**

Project Definition is complete.

### **Design Progress**

Design is 100% complete.

### **Construction Progress**

Construction contract awarded to Griffith Company December 8, 2008.

Notice to Proceed issued January 22, 2009.

Construction is 100% complete including final punch list items.

### **Budget Status**

This project has been completed under budget.

### **Schedule Status**

Contractor is performing final replacement/repair to a damaged tenant gate and has completed the remainder of the punch list.

Final Change Orders and Payment Request are being completed and should be processed by mid-February.

### **Issues**

LAWA and Griffith have completed all negotiations and the final Change Orders are being processed.

## LANDSIDE ELEMENT - Theme Building Restoration (L005A)

### **Project Description**

This project provides for the reconstruction of the upper and lower arches to restore the appearance and provide weather protection. The entire structure will be seismically retrofitted using FEMA 356/ASCE 41 as the design guideline to a Collapse Prevention level. This will be accomplished using a Tuned Mass Damper on top of the elevator core and bolting and lap splices for confinement at the basement, ground floor and plaza levels.

### **Planning and Programming Status**

Project Definition is complete.

### **Design Progress**

Design is 100% complete.

### **Construction Progress**

Construction contract awarded to Tower General Construction Group on July 7, 2008.

Notice to Proceed issued August 18, 2008.

Notice of Substantial Completion June 30, 2010.

Project is complete.

Notice of Final Acceptance Filed December 29, 2010.

### **Budget Status**

Phase I: Emergency Abatement for Upper Arch completed within budget.

Phase II: The Theme Building Restoration is tracking to the budget.

### **Schedule Status**

As of October 31, 2010, this project is complete.

### **Issues**

The negotiated excusable non-compensable time extension was approved and executed under Change Order No. 14. In addition to the time extension, LAWA received a \$96,000.00 credit from Tower General Contractors.

---

## **RESIDENTIAL/SOUNDPROOFING ELEMENT - Aircraft & Noise Monitoring & Management System (ANMMS)-LAX (S004A)**

### **Project Description**

LAWA installed a state of the art Aircraft and Noise Monitoring and Management System (ANMMS) in 1990. The monitors measure noise 24 hours a day, 365 days a year. ANMMS measures airport generated noise in the community, tracks and identifies aircraft within a certain radius of the airport, and is used to help LAWA produce maps showing the noise impact area, as required by the State of California. LAWA continually monitors its ANMMS to ensure the accuracy of noise data and related operations information, and to improve the access to and utilization of the various types of available data.

### **Planning and Programming Status**

Project Definition is complete.

### **Design Progress**

Design is 100% complete.

### **Construction Progress**

Construction contract awarded to Lochard Corporation on October 4, 2004.

### **Budget Status**

This project is anticipated to complete on budget.

### **Schedule Status**

The system has been accepted and punch list activities are ongoing.

### **Issues**

None.

---

## RESIDENTIAL/SOUNDPROOFING ELEMENT - Noise Mitigation/Soundproofing (City of LA) (S002A)

### **Project Description**

This project will provide soundproofing of approximately 9,400 eligible dwelling units making them land use compatible.

### **Planning and Programming Status**

Not applicable.

### **Design Progress**

Selection pending for acoustic design architect for remaining units.

### **Construction Progress**

Various Construction Contracts ongoing.

This component of the Noise Mitigation / Soundproofing Program is 88% complete.

### **Budget Status**

This project is trending to complete on budget.

### **Schedule Status**

This project is on track to be completed in 2012.

### **Issues**

## TERMINAL ELEMENT - Elevators and Escalators Replacement (T001A)

### **Project Description**

This project will upgrade / replace all aging elevators, escalators and moving walkways at LAX, which have exceeded their useful life expectancy. These units will be upgraded/replaced in staggered Priority Groups.

### **Planning and Programming Status**

Project Definition is complete.

### **Design Progress**

Priority I Procurement - Design is 100% complete.  
Priority I Site Mods - Design is 100% complete.  
Priority II-IV Procurement - Design is 100% complete.  
Priority II-IV Site Mods - Design is 100% complete.  
Priority II-IV GC MRL Elevators - Design is 48% complete.

### **Construction Progress**

Priority I Procurement - Contract awarded to Kone, Inc. on May 18, 2009 - Procurement is 100% complete.  
Priority I Site Mods - Construction contract awarded to W.E. O'Neil Construction Company on August 17, 2009 - Construction is 65% complete.  
Priority II - Procurement - NTP issued to Schindler Elevator Corporation on April 19, 2010. Fabrication has begun.  
Priority II-IV Site Mods - Bid window opened on December 21, 2010.  
Priority III-IV GC MRL Elevators - No construction contracts awarded. Bids due on February 3, 2011.

### **Budget Status**

Each active project remains on track to finish within the respective project budget.

### **Schedule Status**

The Priority 1 Units are currently running seventy-two working days behind schedule due to design deficiencies, incomplete as-built drawings, or a combination of both. Resequencing future work is underway and Milestone extensions are being issued to account for compensable delays.

### **Issues**

Sequence of work at Terminal 6 may cause delays to the current KONE contract - dependent on the Hensel-Phelps schedule.

---

## **TBIT RENOVATION ELEMENT - TBIT Interior Improvements and Baggage Screening Facilities (B001A)**

### **Project Description**

This project will renovate the interior public spaces (including the departure lobby; departure concourses; arrival concourses; bus hold room; meeter-greeter area; in-transit lounge; in-bound and outbound baggage system; upgrade the building's paging system, all IT Systems and upgrade the existing elevators, escalators, and moving walks) and construct the North New Large Aircraft Gates. The outbound baggage system will be pursuant to the requirements of the TSA and will include new "matrix" buildings to house the security screening equipment and TSA personnel.

### **Planning and Programming Status**

Project Definition is complete.

### **Design Progress**

Design is 100% complete.

### **Construction Progress**

Construction contract awarded to Clark/McCarthy Joint Venture September 8, 2006.  
Construction was substantially complete on February 7, 2010.  
The contract is in close-out phase.

### **Budget Status**

This project completed under budget.

### **Schedule Status**

The closeout phase is underway.

### **Issues**

---

## **TBIT RENOVATION ELEMENT - Passenger Boarding Bridges (PBB) Replacements & Extensions (B002A)**

### **Project Description**

This project will deliver and install 26 new passenger boarding bridges (PBBs) at LAX, 19 at Tom Bradley International Terminal, 4 at West Remote Boarding Facilities and 3 at Terminal 3. This project also constructs 6 extension PBBs at Ontario Terminals 2 and 4.

### **Planning and Programming Status**

Project Definition is complete.

### **Design Progress**

Design is 100% complete.

### **Construction Progress**

This project is complete.

### **Budget Status**

This project completed under budget.

### **Schedule Status**

This project is completed.

### **Issues**

---

## WORK IN PROGRESS OVERVIEW

### User's Guide - Work in Progress

This section lists the projects that are in various stages of pre-development. Typically, these projects represent efforts for which LAWA has committed funding for the design; not the construction. A project in this category will experience variability as the design is refined, until it is deemed operationally and economically viable and moved into an execution element.



---

## WORK IN PROGRESS - Interim Taxiway Safety Improvement Project (ITSIP) (A006B)

### **Project Description**

The Interim Taxiway Safety Improvement Project (ITSIP) relocates three high-speed exit taxiways between the North Airfield Runways. The relocated taxiways reduce the likelihood and severity of potential runway incursions without significant impacts to runway occupancy and operational efficiency. The construction elements include demolition of existing features, decommissioning of existing taxiways, construction of new taxiways involving concrete and asphalt pavement, pavement striping and marking, airfield lighting modifications and modifications to navigational equipment.

### **Issues**

The design was awarded to Post, Buckley, Schuh & Jernigan, Inc. (PBS&J) in September 2010. The scoping and cost validation work is underway.

---

## PROGRAM MASTER SCHEDULE OVERVIEW

### User's Guide - Schedule

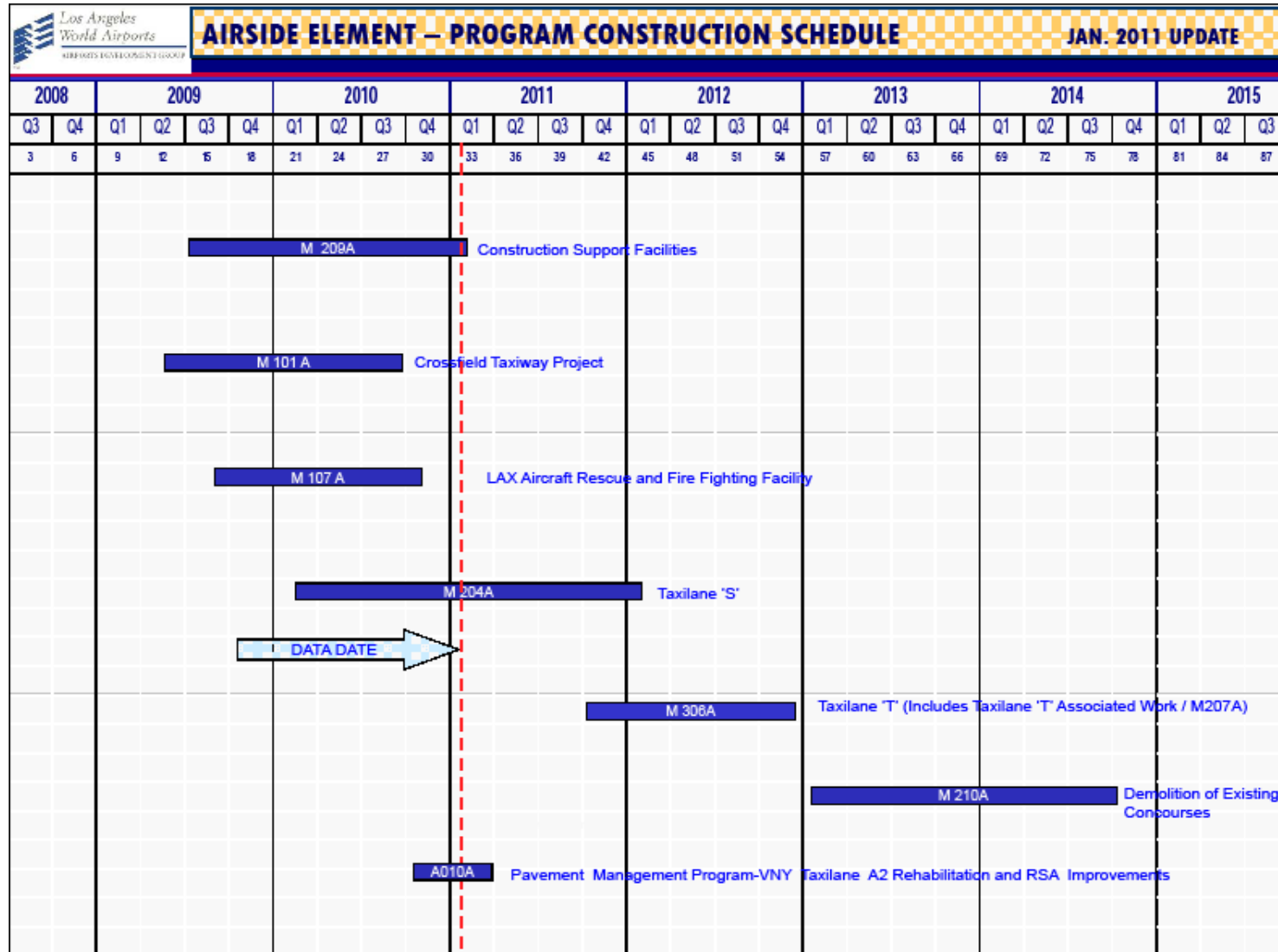
The information provided herein is designed to furnish users of the Airport Development Group (ADG) Program Construction Schedule Report with greater knowledge and a better understanding of the composition of the various components of the schedule report.

**Data Date** - Is a vertical line showing the current date of the report. Dates to the left side of the data date are known. Dates to the right side of the data date are projected.

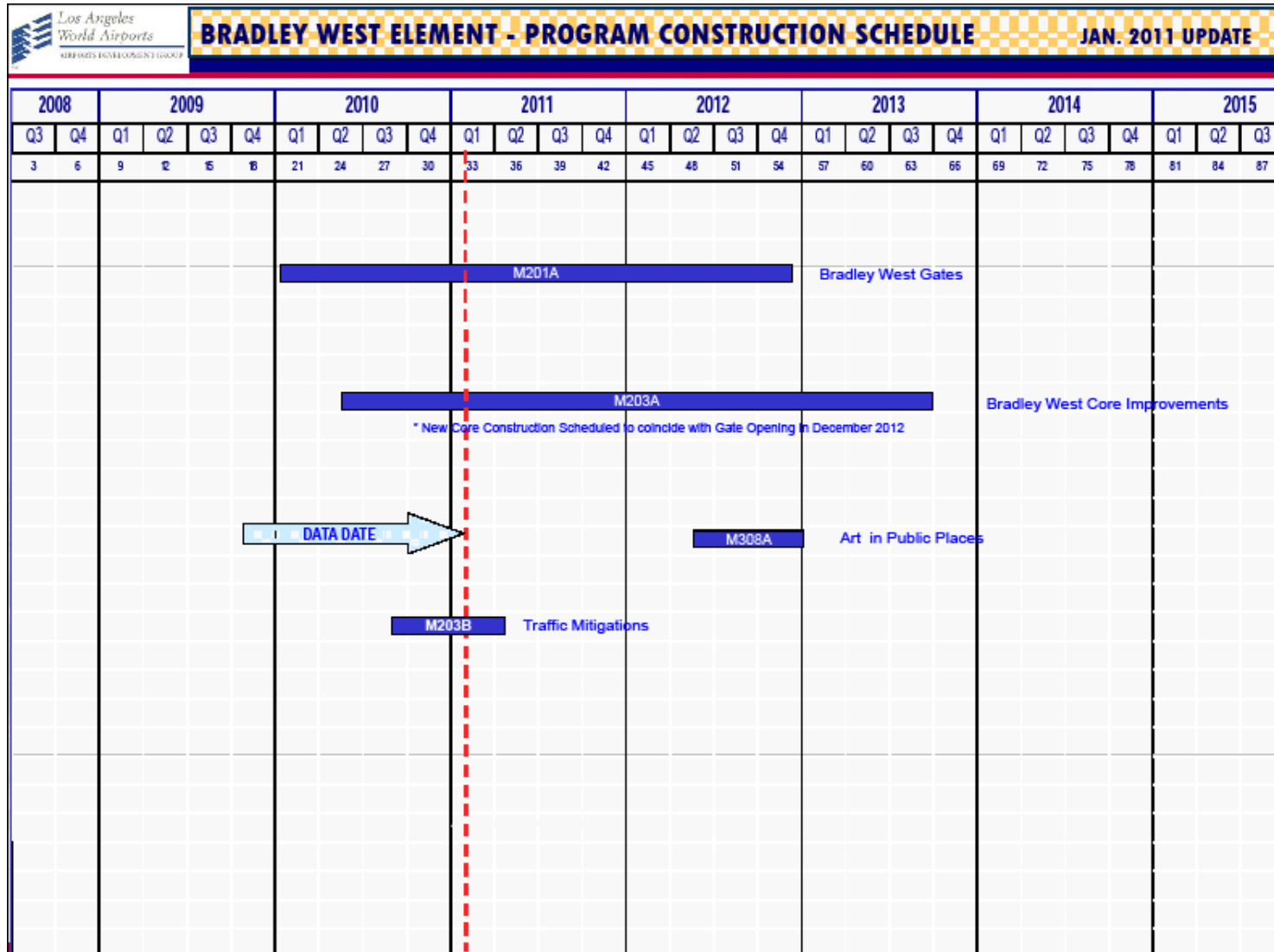
**Project Schedule Bar** - Is the blue bar which represents the construction phase for each project; with the exception of the Residential / Soundproofing projects which contains planning, design and construction phases.

**Project Number** - Is a unique identifier for each project that enables the reader to easily correlate scope, schedule and budget.

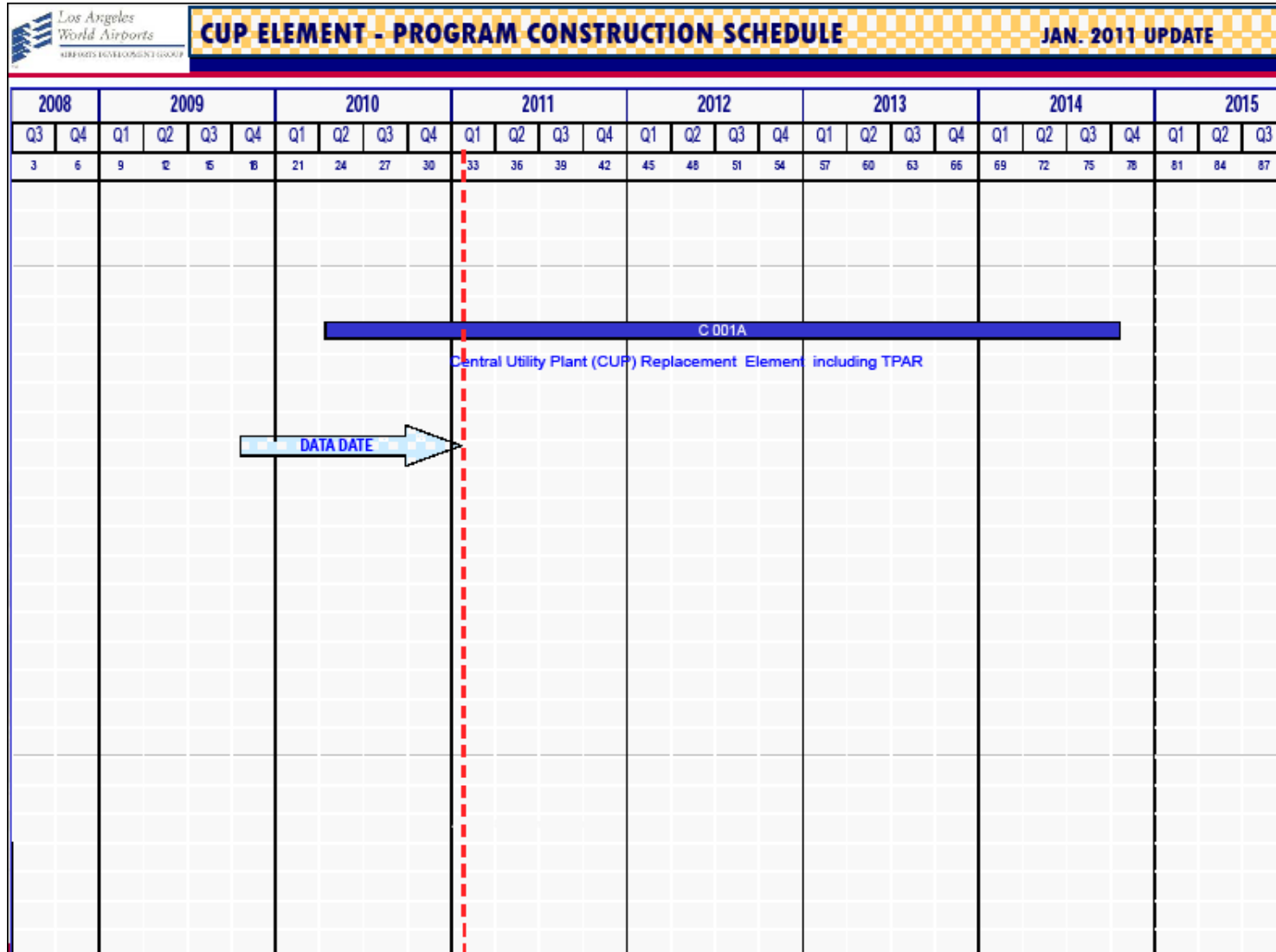
## PROGRAM MASTER SCHEDULE - Continued






## PROGRAM MASTER SCHEDULE - Continued



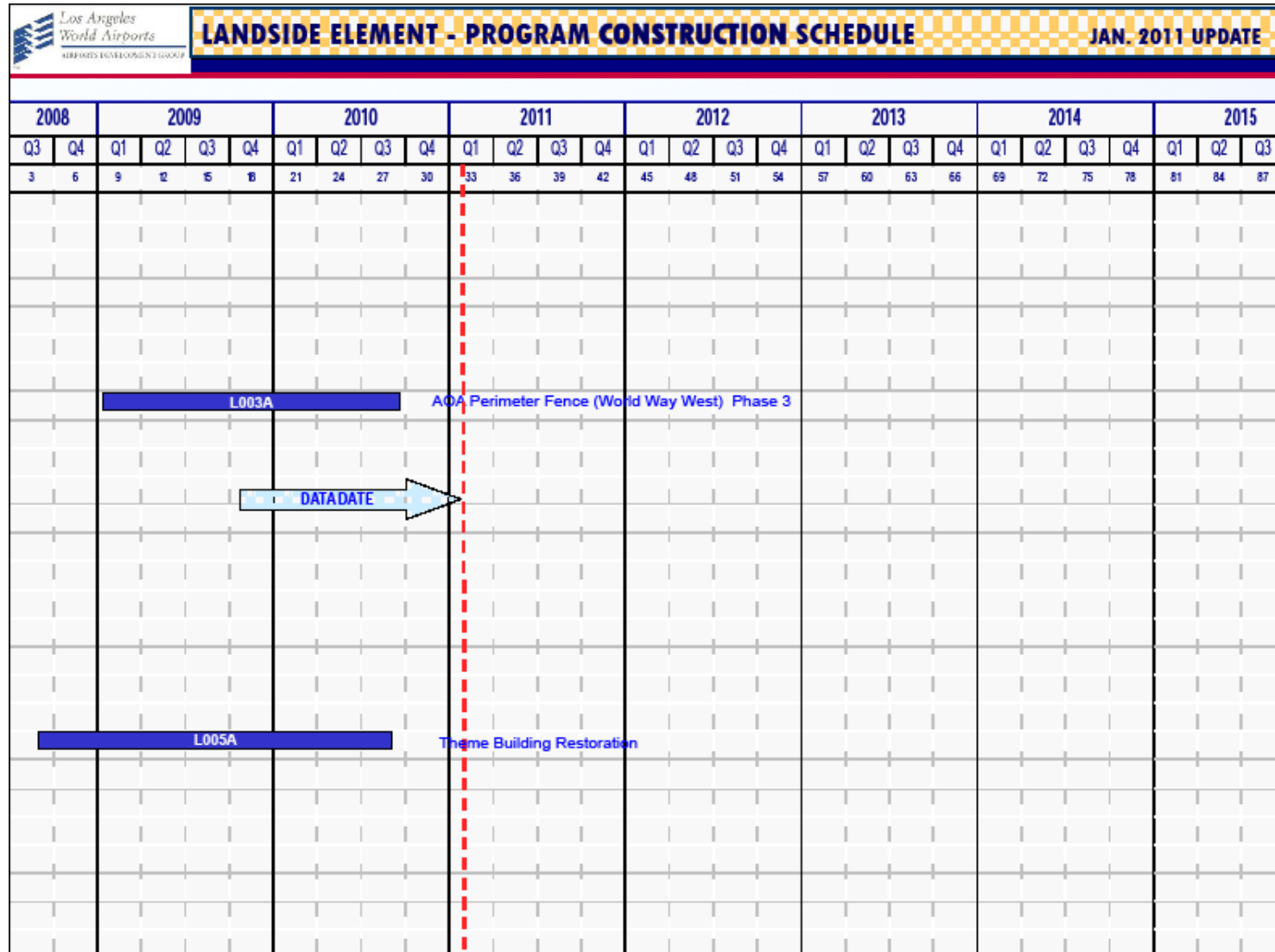
# PROGRAM MASTER SCHEDULE - Continued




# PROGRAM MASTER SCHEDULE - Continued

 <b>UTILITIES &amp; INFRASTRUCTURES ELEMENT - PROGRAM CONST. SCHEDULE - JAN. 2011 UPDATE</b>																													
2008			2009				2010				2011				2012				2013				2014				2015		
Q3	Q4		Q1	Q2	Q3	Q4	Q1	Q2	Q3	Q4	Q1	Q2	Q3	Q4	Q1	Q2	Q3	Q4	Q1	Q2	Q3	Q4	Q1	Q2	Q3	Q4	Q1	Q2	Q3
3	6		9	12	15	18	21	24	27	30	33	36	39	42	45	48	51	54	57	60	63	66	69	72	75	78	81	84	87
																													
											Airport Response Coordination Center (ARCC)																		

## PROGRAM MASTER SCHEDULE - Continued

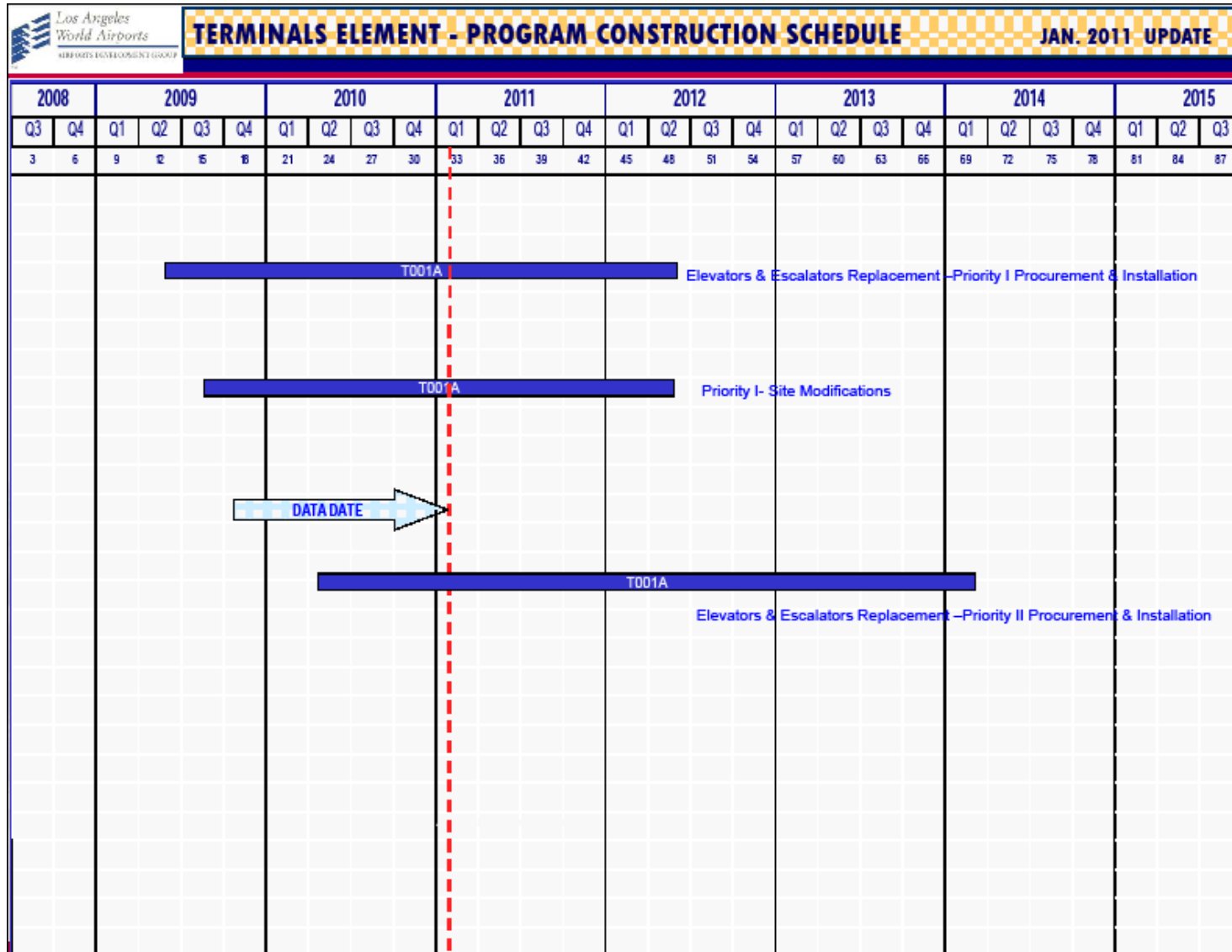


## PROGRAM MASTER SCHEDULE - Continued

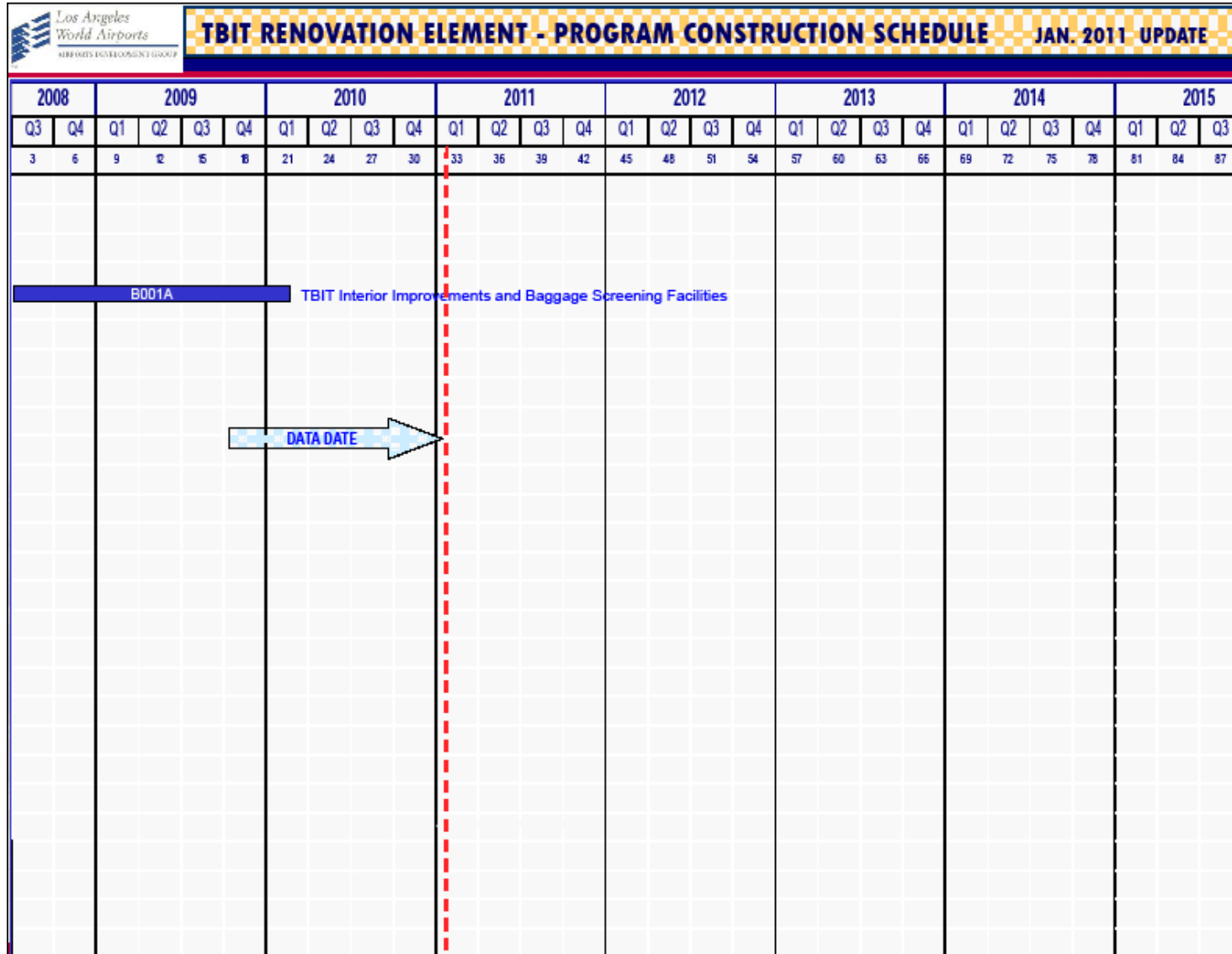
Los Angeles World Airports AIRPORTS DEVELOPMENT GROUP		<b>RESIDENTIAL/ SOUNDPROOFING ELEMENT- PROGRAM SCHEDULE</b>																												JAN. 2011 UPDATE							
2008		2009				2010				2011				2012				2013				2014				2015											
Q3	Q4	Q1	Q2	Q3	Q4	Q1	Q2	Q3	Q4	Q1	Q2	Q3	Q4	Q1	Q2	Q3	Q4	Q1	Q2	Q3	Q4	Q1	Q2	Q3	Q4	Q1	Q2	Q3									
3	6	9	12	15	18	21	24	27	30	33	36	39	42	45	48	51	54	57	60	63	66	69	72	75	78	81	84	87									
S002A										Noise Mitigation / Soundproofing ( City of LA )																											
S004A										Aircraft & Noise Monitoring Management System (ANMMS) - LAX																											
																																					



# PROGRAM MASTER SCHEDULE - Continued



## PROGRAM MASTER SCHEDULE - Continued



### User's Guide - Budget Reports

The information provided herein is designed to furnish users of the Airport Development Group (ADG) Budget Reports with greater knowledge and a better understanding of the composition of the various components of the budget report.

**Baseline Budget** - Is the estimated cost of the project as it was reported in the November 2009 report with the exception of the Crossfield Taxiway project which is from the February 2009 Operating Statement (OS) budget report.

**Current Budget** - Is the estimated cost of the project as it was planned plus or minus any processed revisions.

**Committed to Date** - Is the total contractual obligation to date for the project, e.g. awarded design contracts, awarded construction contracts, authorized task orders, etc.

**Incurred to Date** - Is the total of invoices received to date for the project.

**Estimate at Completion (EAC)** - Is the latest estimate of the total cost of the project.

**Variance** - Is the difference between Budget minus Estimate at Completion (EAC).

**Percent (%) Incurred** - Calculated as Incurred to Date divided by Estimate at Completion, this column provides a financial-oriented progress indicator.

**Percent (%) Contingency Used**: Calculated as the change in Contingency divided by Original Contingency, this column provides an indicator for project contingency-usage.

## PROGRAM COST SUMMARY REPORT

as of 12/31/2010

(dollars in thousands)								
Description	Baseline Budget	Current Budget	Committed to Date	Incurred to Date	Estimate at Completion	Variance (Budget-EAC)	% Incurred	% Cont Used
Airside Element	650,660	647,859	334,997	211,849	612,022	35,835	35%	55%
Bradley West Element	1,545,020	1,547,803	1,008,819	307,879	1,421,805	125,999	22%	0%
CUP Replacement Element	438,085	438,085	334,585	44,823	382,616	55,468	12%	0%
Utilities & Infrastructure Element	8,175	13,914	12,486	7,863	13,711	203	57%	60%
Landside Element	28,685	28,685	27,078	25,703	26,648	2,037	96%	31%
Residential/Soundproofing Element	183,233	163,233	151,040	143,163	163,233	0	88%	0%
Terminal Element	270,000	270,000	96,366	40,220	205,787	64,213	20%	8%
TBIT Renovation Element	755,343	755,343	737,914	735,043	738,396	16,946	100%	89%
<b>Subtotal</b>	<b>3,879,201</b>	<b>3,864,922</b>	<b>2,703,285</b>	<b>1,516,543</b>	<b>3,564,218</b>	<b>300,701</b>	<b>43%</b>	<b>31%</b>
Unallocated Contingency	N/A	270,317	0	0	N/A	N/A	N/A	N/A
<b>Subtotal</b>	<b>4,078,781</b>	<b>4,135,239</b>	<b>2,703,285</b>	<b>1,516,543</b>	<b>N/A</b>	<b>N/A</b>	<b>N/A</b>	<b>N/A</b>
Work in Progress	N/A	6,754	6,754	850	N/A	N/A	N/A	N/A
<b>Program Total</b>	<b>N/A</b>	<b>4,141,993</b>	<b>2,710,039</b>	<b>1,517,393</b>	<b>N/A</b>	<b>N/A</b>	<b>N/A</b>	<b>N/A</b>

Notes:

1. The current budget and estimate at completion excludes escalation

## AIRSIDE ELEMENT BUDGET REPORT as of 12/31/2010

(dollars in thousands)									
Project #	Description	Baseline Budget	Current Budget	Committed to Date	Incurred to Date	Estimate at Completion	Variance (Budget-EAC)	% Incurred	% Cont Used
M209A	Construction Support Facilities	14,790	8,425	7,059	5,670	7,799	626	73%	34%
M101A	Crossfield Taxiway Project	177,760	145,678	137,881	130,063	141,223	4,454	92%	90%
M107A	LAX Aircraft Rescue and Fire Fighting Facility	14,190	14,190	13,166	12,357	13,615	575	91%	68%
M205A	Bradley West - Aprons	111,870	111,870	27,214	13,196	102,820	9,050	13%	1%
M204A	Taxilane 'S'	174,980	150,918	134,688	43,264	152,993	(2,076)	28%	80%
M306A	Taxilane 'T'	96,500	156,208	8,683	4,824	144,898	11,310	3%	0%
M210A	Demolition of Existing Concourses	52,600	52,600	1,765	1,560	43,604	8,996	4%	0%
A010A	Pavement Management Program - VNY Taxilane A2 Rehabilitation and RSA Improvements	7,970	7,970	4,541	915	5,070	2,900	18%	0%
<b>Airside Element Total</b>		<b>650,660</b>	<b>647,859</b>	<b>334,997</b>	<b>211,849</b>	<b>612,022</b>	<b>35,835</b>	<b>35%</b>	<b>55%</b>

Notes:

1. The current budget and estimate at completion excludes escalation

## BRADLEY WEST ELEMENT BUDGET REPORT

as of 12/31/2010

(dollars in thousands)									
Project #	Description	Baseline Budget	Current Budget	Committed to Date	Incurred to Date	Estimate at Completion	Variance (Budget-EAC)	% Incurred	% Cont Used
M201A	Bradley West Gates	742,954	744,879	573,651	199,759	709,413	35,466	28%	0%
M203A	Bradley West Core Improvements	793,164	795,089	427,812	107,378	704,780	90,309	15%	0%
M203B	Construction Traffic Mitigations	3,542	2,475	1,996	742	2,252	224	33%	0%
M308A	Art In Public Places	5,360	5,360	5,360	0	5,360	0	0%	0%
<b>Bradley West Element Total</b>		<b>1,545,020</b>	<b>1,547,803</b>	<b>1,008,819</b>	<b>307,879</b>	<b>1,421,805</b>	<b>125,999</b>	<b>22%</b>	<b>0%</b>

Notes:

1. The current budget and estimate at completion excludes escalation

## CUP REPLACEMENT ELEMENT BUDGET REPORT

as of 12/31/2010

(dollars in thousands)									
Project #	Description	Baseline Budget	Current Budget	Committed to Date	Incurred to Date	Estimate at Completion	Variance (Budget-EAC)	% Incurred	% Cont Used
C001A	Central Utility Plant	438,085	438,085	334,585	44,823	382,616	55,468	12%	0%
<b>CUP Replacement Element Total</b>		<b>438,085</b>	<b>438,085</b>	<b>334,585</b>	<b>44,823</b>	<b>382,616</b>	<b>55,468</b>	<b>12%</b>	<b>0%</b>

Notes:

1. The current budget and estimate at completion excludes escalation

## UTILITIES & INFRASTRUCTURE ELEMENT BUDGET REPORT

as of 12/31/2010

(dollars in thousands)									
Project #	Description	Baseline Budget	Current Budget	Committed to Date	Incurred to Date	Estimate at Completion	Variance (Budget-EAC)	% Incurred	% Cont Used
U009A	Airport Response Coordination Center (ARCC)	8,175	13,914	12,486	7,863	13,711	203	57%	60%
<b>Utilities &amp; Infrastructure Element Total</b>		<b>8,175</b>	<b>13,914</b>	<b>12,486</b>	<b>7,863</b>	<b>13,711</b>	<b>203</b>	<b>57%</b>	<b>60%</b>

Notes:

1. The current budget and estimate at completion excludes escalation



## LANDSIDE ELEMENT BUDGET REPORT

as of 12/31/2010

(dollars in thousands)									
Project #	Description	Baseline Budget	Current Budget	Committed to Date	Incurred to Date	Estimate at Completion	Variance (Budget-EAC)	% Incurred	% Cont Used
L003A	AOA Perimeter Fence (World Way West) Phase 3	17,162	17,162	15,651	14,344	15,221	1,941	94%	31%
L005A	Theme Building Restoration	11,523	11,523	11,427	11,359	11,427	96	99%	100%
<b>Landside Element Total</b>		<b>28,685</b>	<b>28,685</b>	<b>27,078</b>	<b>25,703</b>	<b>26,648</b>	<b>2,037</b>	<b>96%</b>	<b>31%</b>

Notes:

1. The current budget and estimate at completion excludes escalation

## RESIDENTIAL/SOUNDPROOFING ELEMENT BUDGET REPORT

as of 12/31/2010

(dollars in thousands)									
Project #	Description	Baseline Budget	Current Budget	Committed to Date	Incurred to Date	Estimate at Completion	Variance (Budget-EAC)	% Incurred	% Cont Used
S004A	Aircraft & Noise Monitoring & Management System (ANMMS)-LAX	3,233	3,233	3,233	3,021	3,233	0	93%	0%
S002A	Noise Mitigation/Soundproofing (City of LA)	180,000	160,000	147,807	140,142	160,000	0	88%	0%
<b>Residential/Soundproofing Element Total</b>		<b>183,233</b>	<b>163,233</b>	<b>151,040</b>	<b>143,163</b>	<b>163,233</b>	<b>0</b>	<b>88%</b>	<b>0%</b>

Notes:

1. The current budget and estimate at completion excludes escalation

## TERMINAL ELEMENT BUDGET REPORT

as of 12/31/2010

(dollars in thousands)									
Project #	Description	Baseline Budget	Current Budget	Committed to Date	Incurred to Date	Estimate at Completion	Variance (Budget-EAC)	% Incurred	% Cont Used
T001A	Elevators and Escalators Replacement	270,000	270,000	96,366	40,220	205,787	64,213	20%	8%
<b>Terminal Element Total</b>		<b>270,000</b>	<b>270,000</b>	<b>96,366</b>	<b>40,220</b>	<b>205,787</b>	<b>64,213</b>	<b>20%</b>	<b>8%</b>

Notes:

1. The current budget and estimate at completion excludes escalation

## TBIT RENOVATION ELEMENT BUDGET REPORT

as of 12/31/2010

(dollars in thousands)									
Project #	Description	Baseline Budget	Current Budget	Committed to Date	Incurred to Date	Estimate at Completion	Variance (Budget-EAC)	% Incurred	% Cont Used
B001A	TBIT Interior Improvements and Baggage Screening Facilities	750,174	750,174	733,470	730,933	733,952	16,221	100%	89%
B002A	Passenger Boarding Bridges (PBB) Replacements & Extensions	5,169	5,169	4,444	4,110	4,444	725	92%	0%
<b>TBIT Renovation Element Total</b>		<b>755,343</b>	<b>755,343</b>	<b>737,914</b>	<b>735,043</b>	<b>738,396</b>	<b>16,946</b>	<b>100%</b>	<b>89%</b>

Notes:

1. The current budget and estimate at completion excludes escalation
2. These Passenger Boarding Bridges are outside of TBIT

## WORK IN PROGRESS BUDGET REPORT as of 12/31/2010

(dollars in thousands)									
Project #	Description	Baseline Budget	Current Budget	Committed to Date	Incurred to Date	Estimate at Completion	Variance (Budget-EAC)	% Incurred	% Cont Used
A006B	Interim Taxiway Safety Improvement Project (ITSIP)	N/A	6,754	6,754	850	N/A	N/A	N/A	N/A
<b>Work in Progress Element Total</b>		N/A	<b>6,754</b>	<b>6,754</b>	<b>850</b>	N/A	N/A	N/A	N/A

Notes:

1. The current budget and estimate at completion excludes escalation

---

## PROGRAM CASH FLOW OVERVIEW

### User's Guide - Cash Flow

The information provided herein is designed to furnish users of the Airport Development Group (ADG) Cash Flow Reports with greater knowledge and a better understanding of the cash flow report.

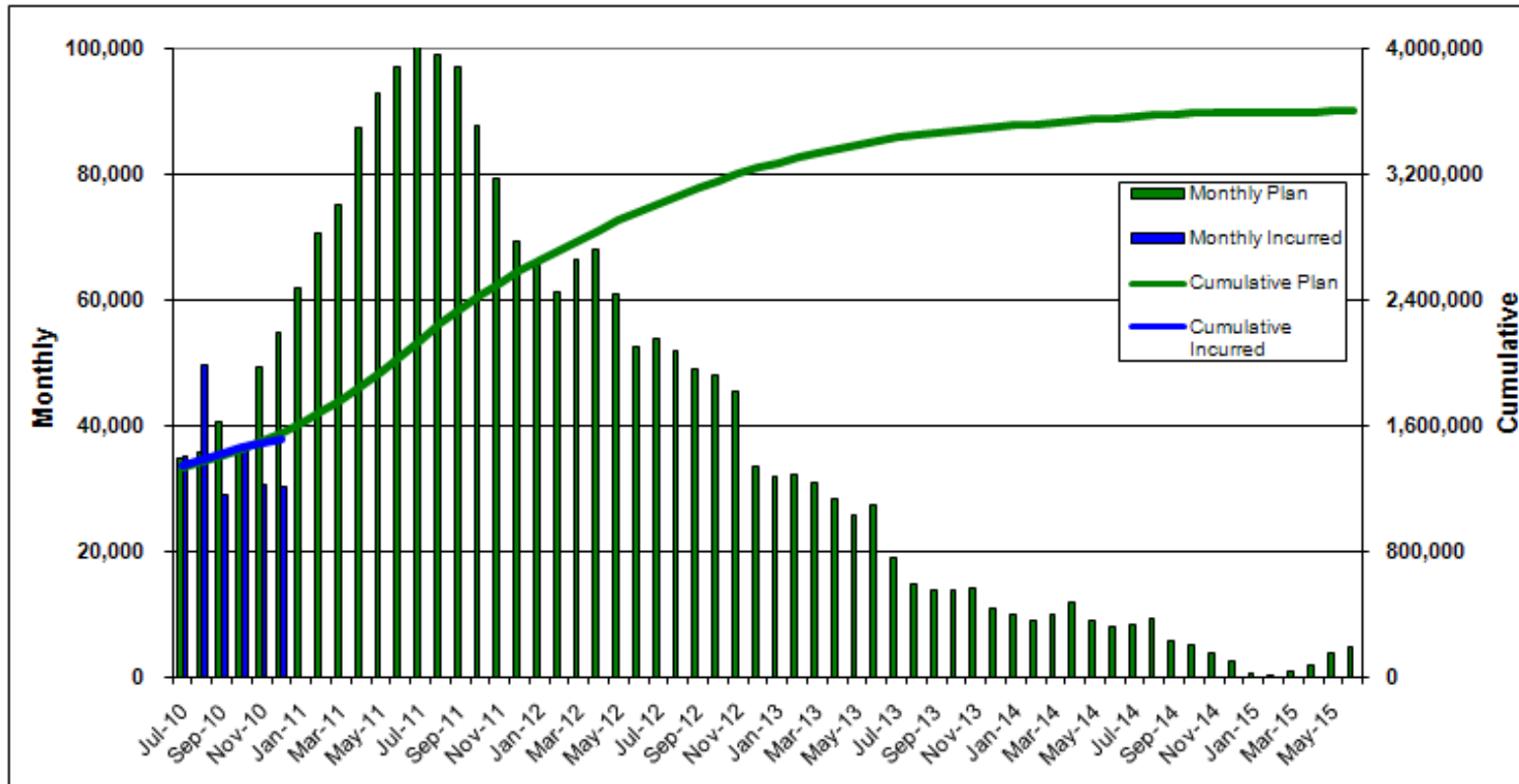
Monthly Plan - Is the estimated cost of the work anticipated for a given month.

Monthly Incurred - Is the cost of the work actually completed and invoiced for a given month.

Cumulative Plan - Represents the summation of the Monthly Plan amounts, to a given point in time, and provides the user with an overall forecast.

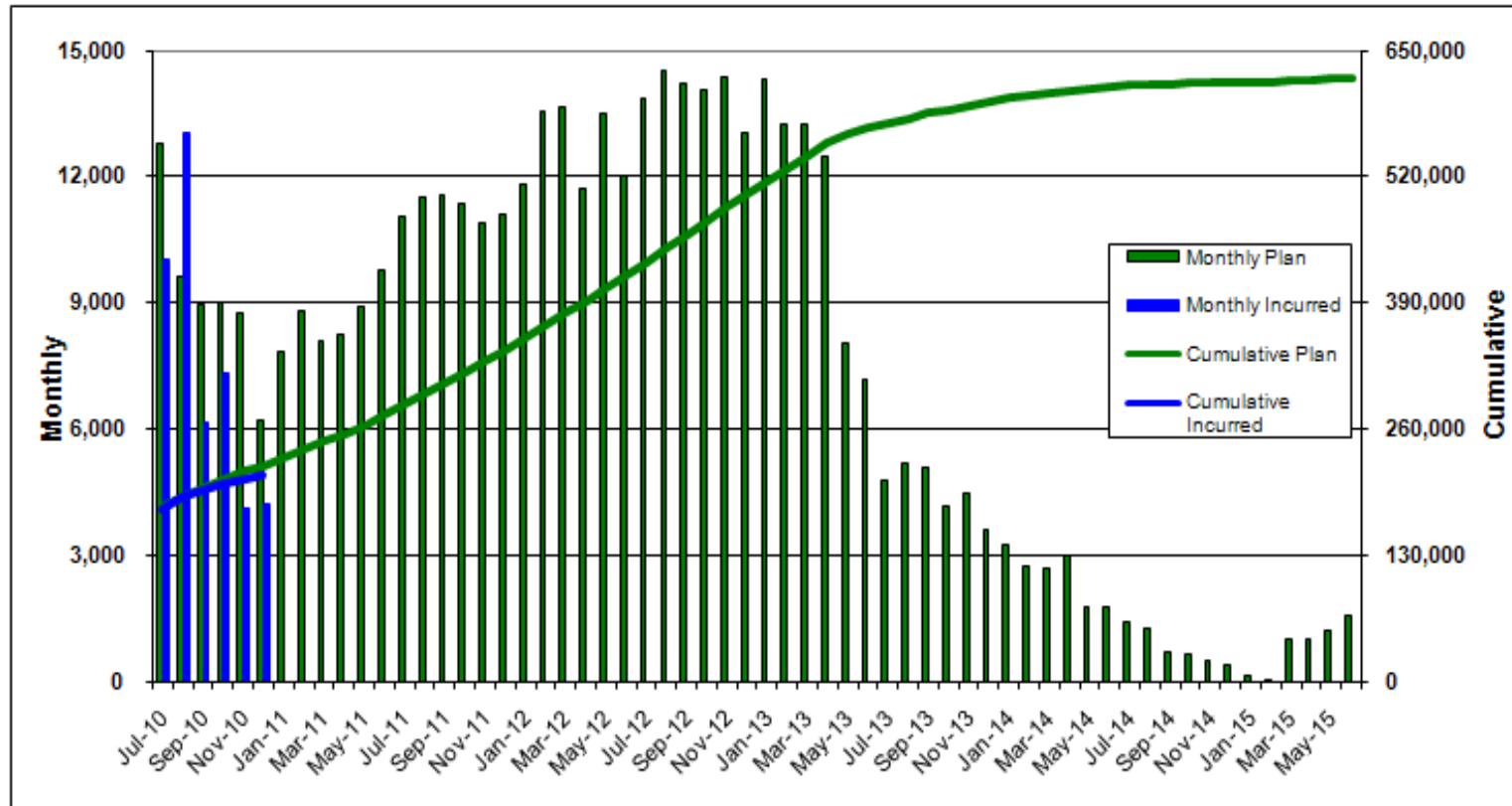
Cumulative Incurred - Represents the summation of the Monthly Incurred amounts, to a given point in time, and provides the user with the total amount invoiced.

## PROGRAM CASH FLOW as of 12/31/2010



- Notes:
1. Unallocated Contingency is not included.
  2. Escalation is not included.

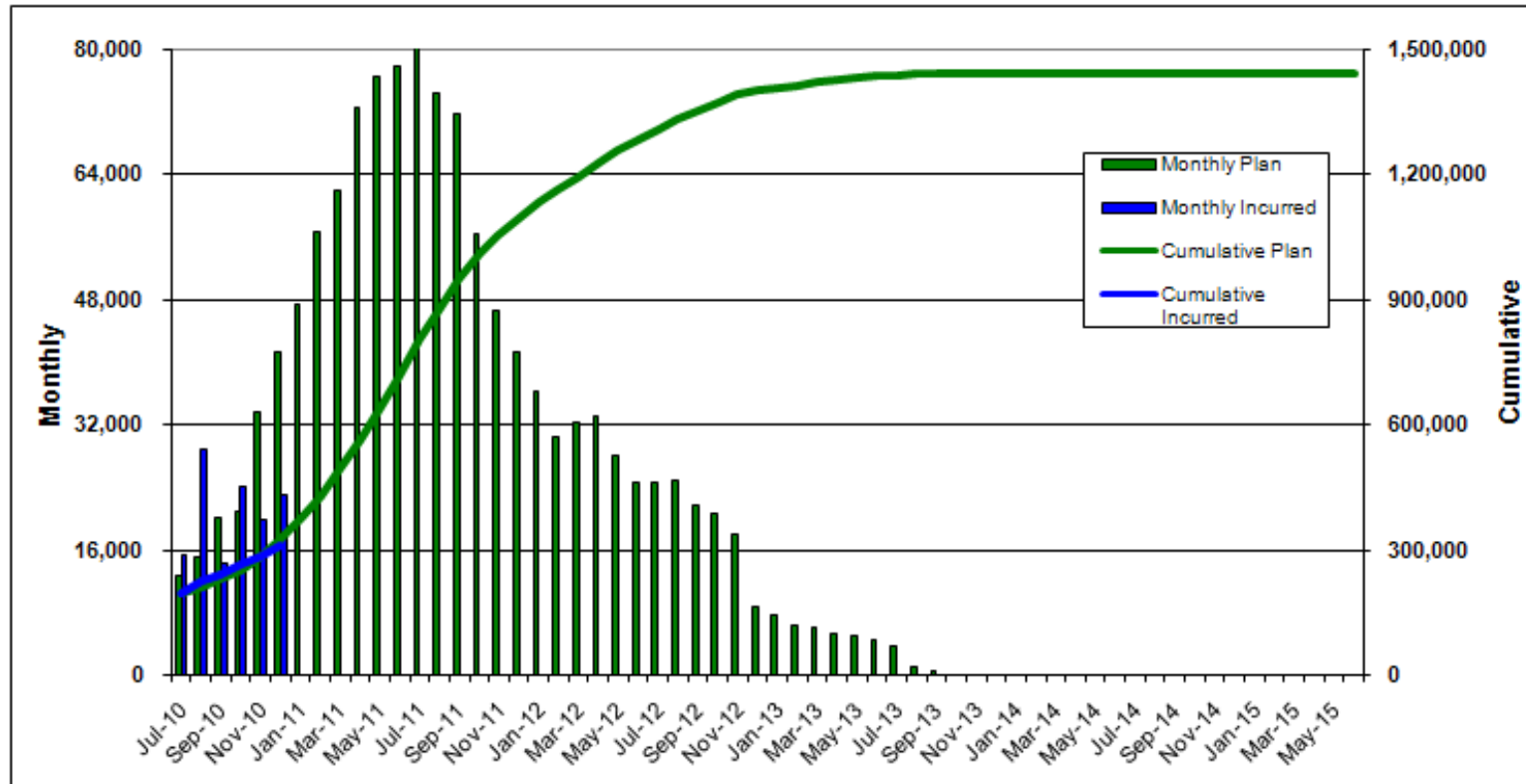
## AIRSIDE ELEMENT CASH FLOW as of 12/31/2010



- Notes:
1. Unallocated Contingency is not included.
  2. Escalation is not included.



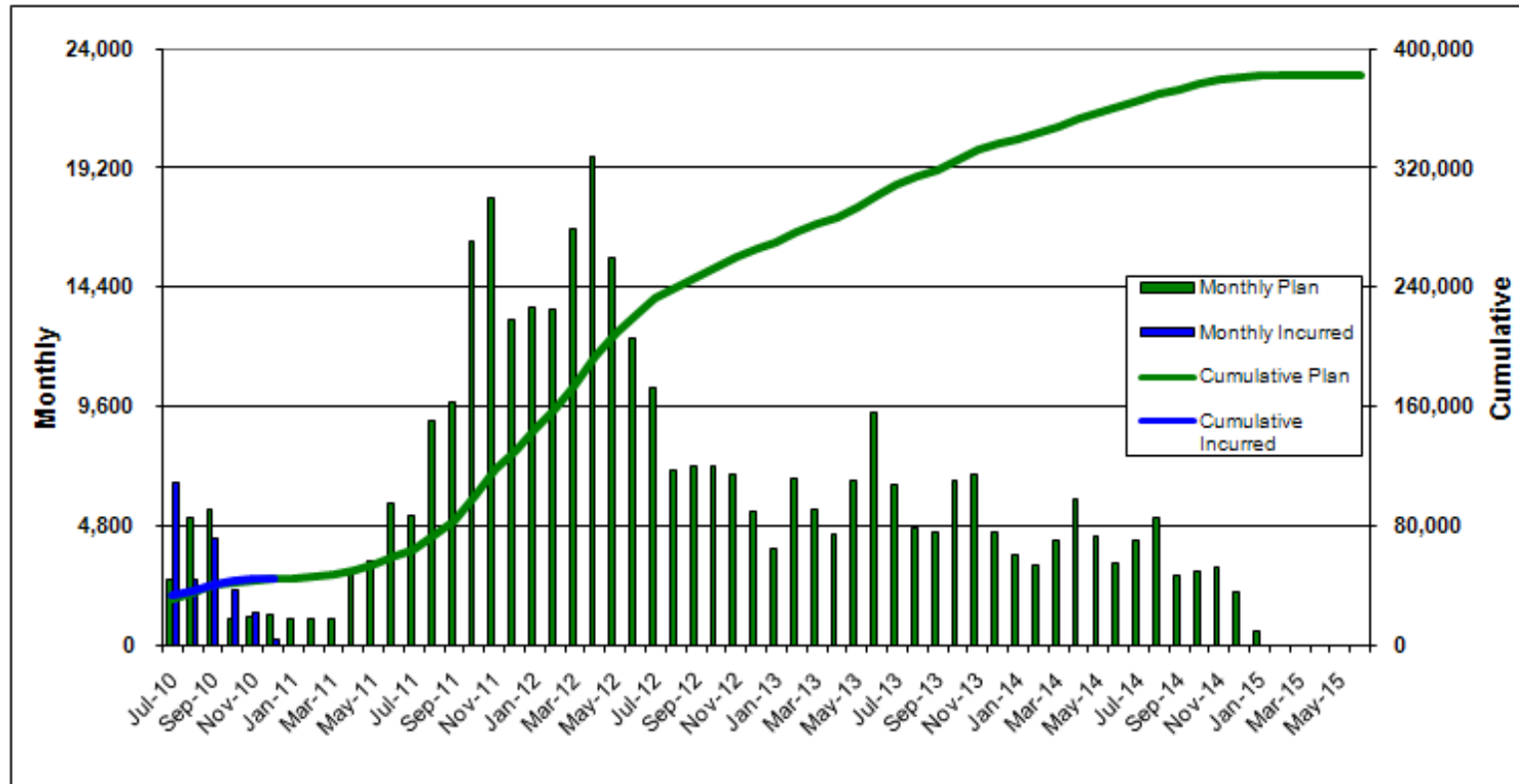
## BRADLEY WEST ELEMENT CASH FLOW as of 12/31/2010



- Notes:
1. Unallocated Contingency is not included.
  2. Escalation is not included.

## CUP REPLACEMENT CASH FLOW

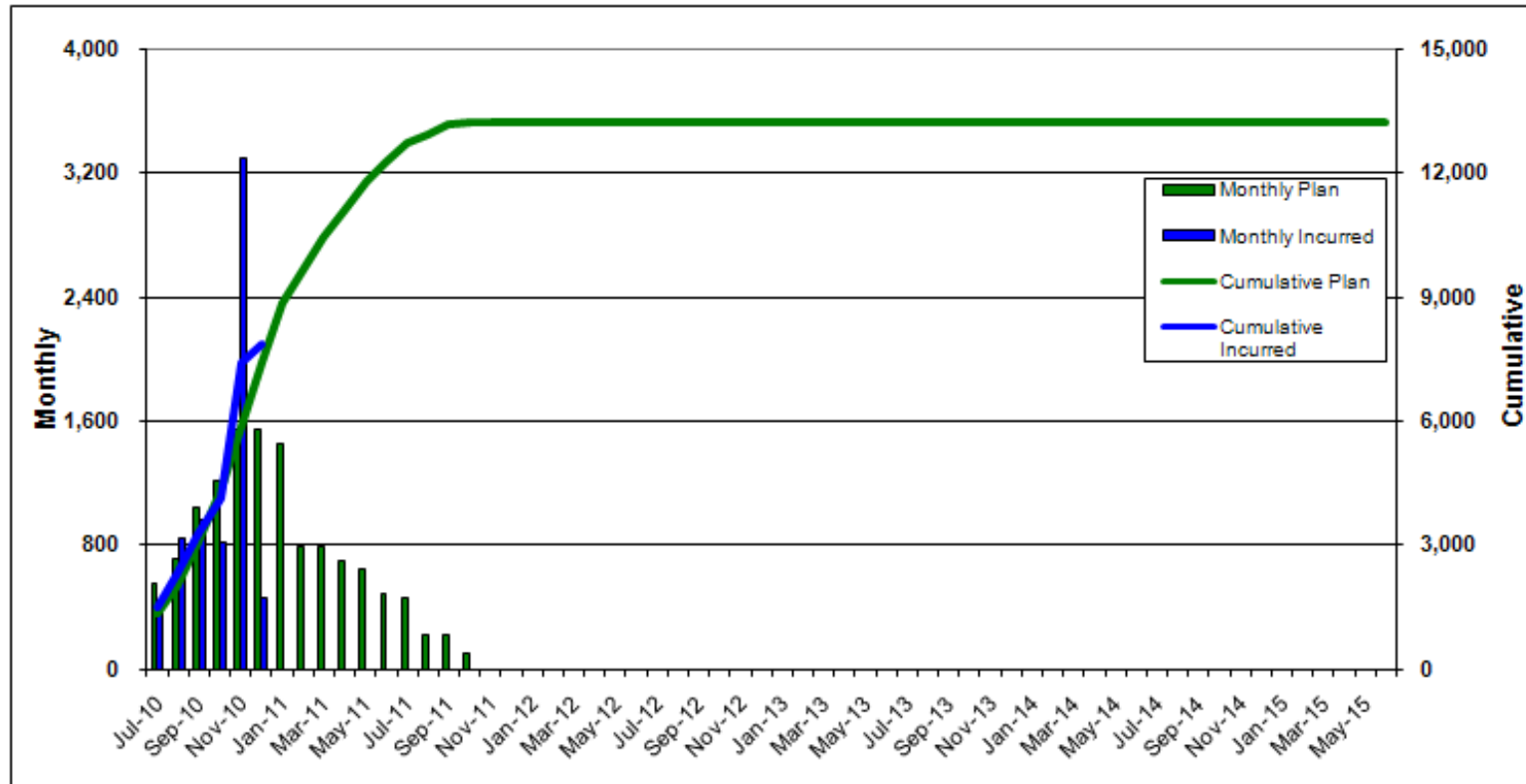
as of 12/31/2010



- Notes:
1. Unallocated Contingency is not included.
  2. Escalation is not included.

## UTILITIES & INFRASTRUCTURE ELEMENT CASH FLOW

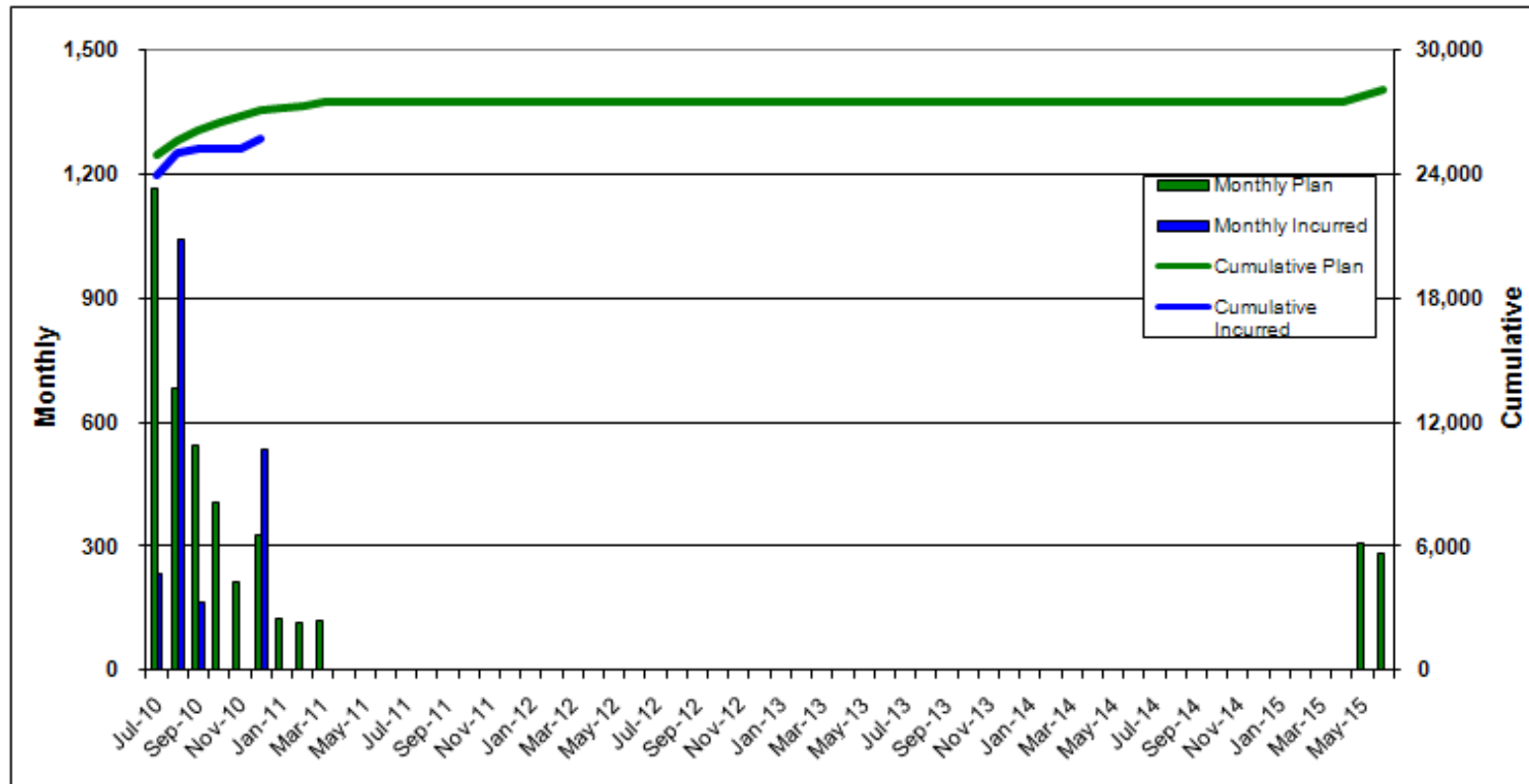
as of 12/31/2010



Notes:

1. Unallocated Contingency is not included.
2. Escalation is not included.

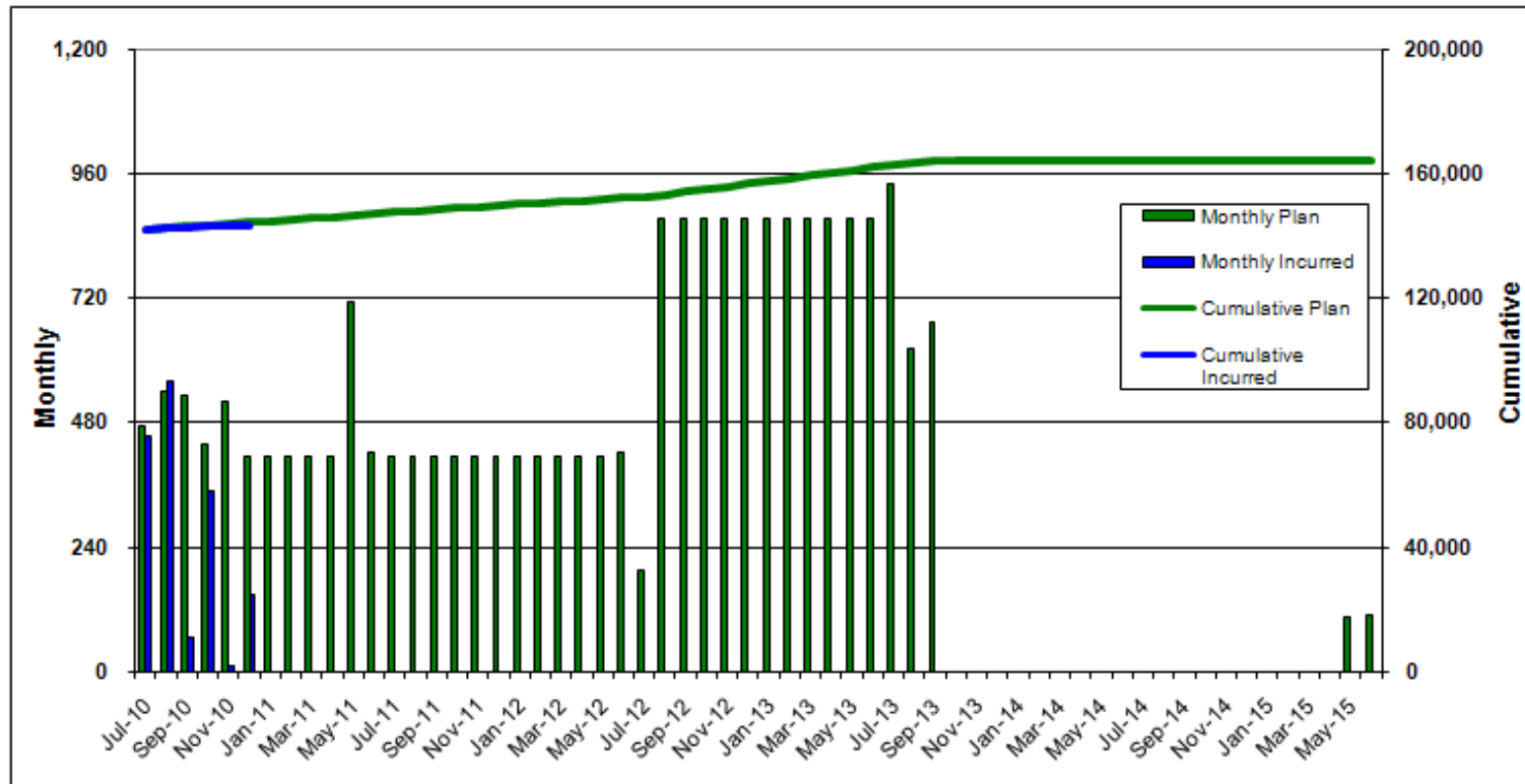
## LANDSIDE ELEMENT CASH FLOW as of 12/31/2010



- Notes:
1. Unallocated Contingency is not included.
  2. Escalation is not included.

## RESIDENTIAL/SOUNDPROOFING ELEMENT CASH FLOW

as of 12/31/2010

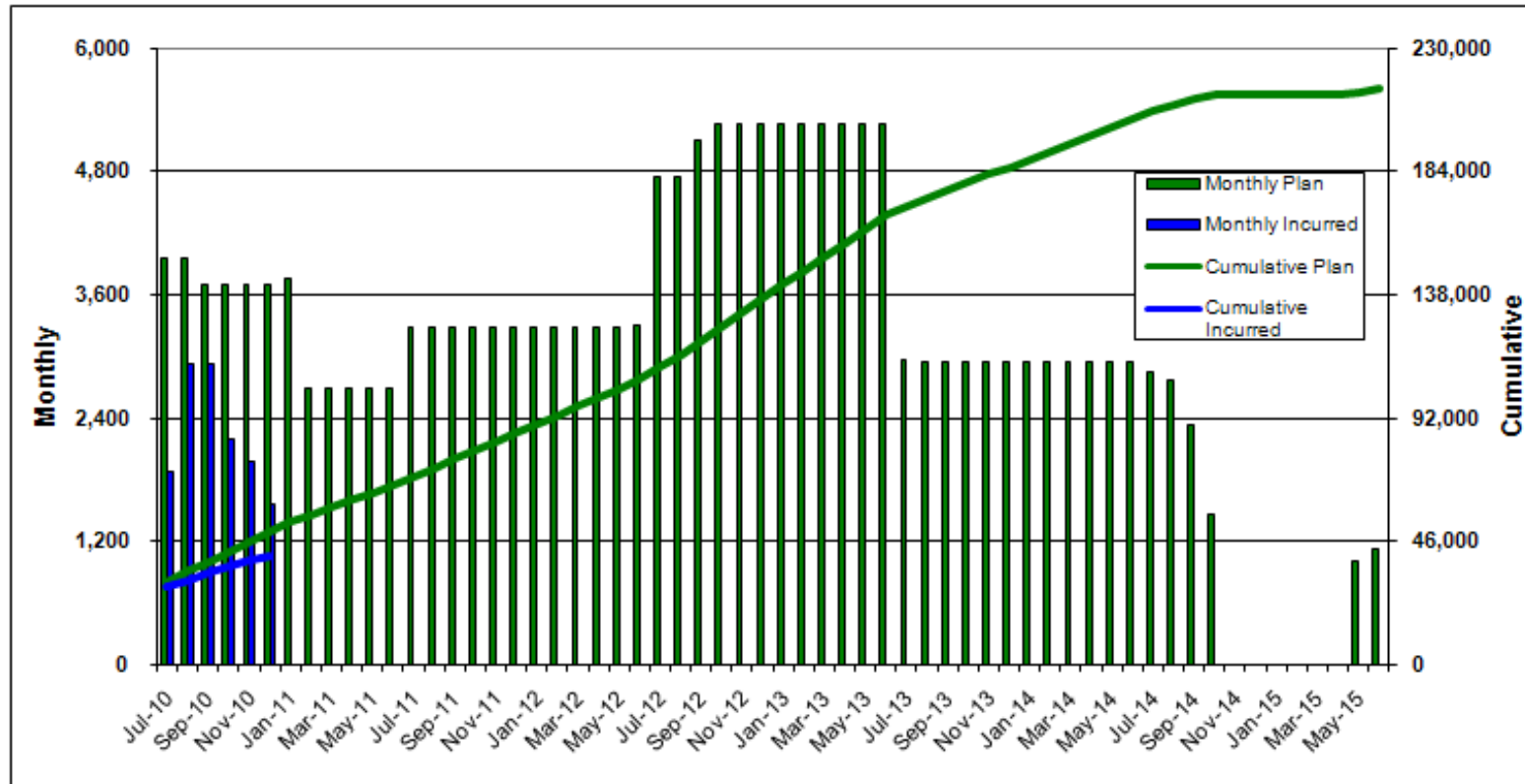


Notes:

1. Unallocated Contingency is not included.
2. Escalation is not included.

## TERMINALS ELEMENT CASH FLOW

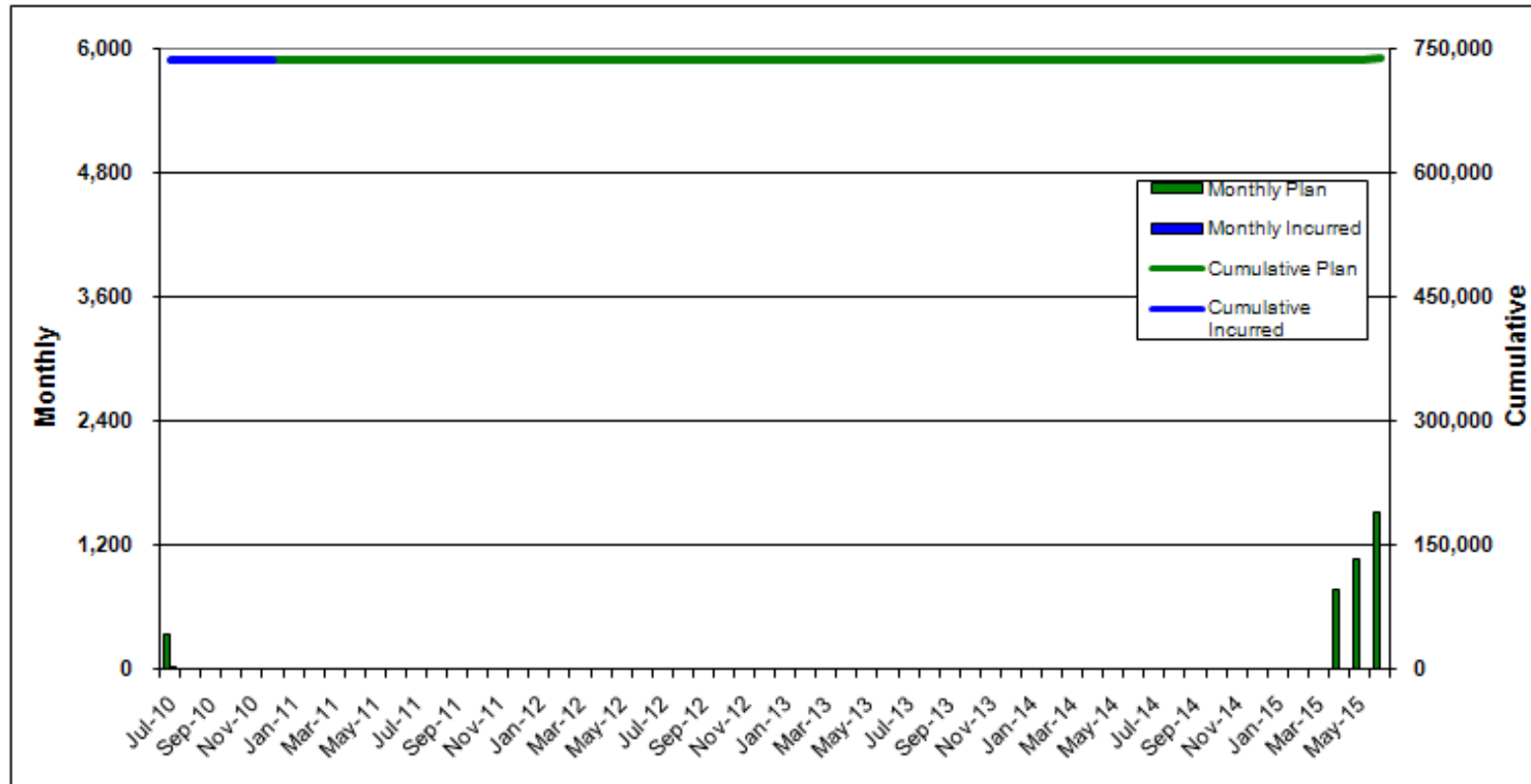
as of 12/31/2010



- Notes:
1. Unallocated Contingency is not included.
  2. Escalation is not included.

## TBIT RENOVATION ELEMENT CASH FLOW

as of 12/31/2010



Notes:

1. Unallocated Contingency is not included.
2. Escalation is not included.

### **User's Guide - Change Order**

The information provided herein is designed to furnish users of the Airport Development Group (ADG) Change Order Reports with greater knowledge and a better understanding of the composition of the various components of the change order report.

Change Orders - Process by which an adjustment is made to the total contract capacity.

CGMP Revision - Process by which the value of a CGMP is adjusted within the original total contract capacity. This process is employed by the Bradley West Element - Gates and Core projects in the administration of the Construction Management at Risk (CMAR) contracts.



## CHANGE ORDERS as of 1/31/2011

Element	Project	Contract	Change Order No	< \$150K	\$150K - \$1Mil	> \$1Mil	Notes
<b>Airside Element</b>							
<b>M107A - LAX AIRCRAFT RESCUE AND FIRE FIGHTING FACILITY</b>							
	DA-4354		0008	\$16,570			Existing Electrical Cord Reel Outlets & Turnout Locker Furring, Sprinkler Drain Outlet and Extractor Modifications
	DA-4354		0009	\$102,075			Make-up Air for Apparatus Bay, Fuel Management & Monitoring System, Gong Light Requirements
	DA-4354		0010	\$46,640			Sheet Metal Lining in Equipment Room 221, Air Compressor Model and Base Changes, Communication and CCTV Requirements
	DA-4354		0011	\$72,801			Boiler Piping Modifications, Added Boiler Pump Power, Emergency Generator Conduit Methane Seal
	DA-4354		0012	\$52,807			ITA Storage Container, Miscellaneous Equipment Changes, Remote Control Transmitter, Vehicle Lift Requirements and Roof Edge Bent Plate, LEED Renewable Energy Certificate
	DA-4354		0013	\$72,767			Waterproofing Termination at Walls, Appliance Revision, SWPPP Permit Renewal, Sectional Overhead Doors
	DA-4354		0014	\$97,641			Revised Fire Water Connection, Existing Underground Utilities, Soffit in Apparatus Room Walkway, Gas and Electrical Outlets to Trellis Area, Paint Coating Thickness for AC-1, Site Retaining Wall Step Footing
	DA-4354		0015	\$96,477			Domestic & Fire Water Piping Installation at Entrance Driveway, Hot-and-Cold Water Bibs in Apparatus Room, Burst System, Office Metal Panel Corner Condition, Parapet Height Change & Coping Detail, Building Plaque, East Elevation Tube Steel Assembly Revisions, Kitchen Casework Modification
<b>M204A - TAXILANE 'S'</b>							
	DA-4398		0013			\$1,500,000	Phase 3A Deep Utility Revisions

## CHANGE ORDERS - Continued as of 1/31/2011

Element	Project	Contract	Change Order No	< \$150K	\$150K - \$1Mil	> \$1Mil	Notes
<b>Bradley West Element</b>							
<b>DA-4337 - BRADLEY WEST GATES (DA-4337)</b>							
	DA-4337/CGMP02		0014	\$53,887			East Egress Revision at Gate 119, Fee CGMP02, City Revenue Tax CGMP02
	DA-4337/CGMP02		0016	\$32,575			IWBT Trash and Recycle Bin, IWBT RFI 1629 Additional Drains at Low Roof, IWBT RFI 1793 - Access to Flush Valves at Toilets and Urinals, Fee CGMP02, City Tax
	DA-4337/CGMP02		0017	\$7,930			CD 0030 IWBT Podium Conduits, Fee CGMP02, City Tax
	DA-4337/CGMP02		0018	\$19,244			Redesign of Connector Misc Metal - ISEC, IWBT Misc. Additional Door Hardware, Fee CGMP02, City Revenue Tax CGMP02
	DA-4337/CGMP02		0021	\$46,563			ISEC - Interior CD 0038 IWBT Additional Plywood, IWBT Loading Dock Revisions, Storm Drain Highline Pump Maintenance Credit, WAJV Fee - WAJV is authorized the cost of associated fee as outlined in the contract. This fee covers the contractor's profit, home office expenses and overhead, general and administrative overhead and any other general expenses., Gross Receipts Tax - WAJV is authorized costs for the required Gross Receipts Tax as applicable., East Egress - RFI 1306 - Abandonment of existing West Egress doors
	DA-4337/CGMP02		0022	\$724			Griffith - Paving - CD 0135 Elect PIV Monitoring - Equipment Only, WAJV Fee - WAJV is authorized the cost of associated fee as outlined in the contract. This fee covers the contractor's profit, home office expenses and overhead, general and administrative overhead and any other general expenses., Gross Receipts Tax - WAJV is authorized costs for the required Gross Receipts Tax as applicable.
	DA-4337/CGMP04		0007	(\$110,421)			Wire Mesh Size in Gates Structural Concrete Decks, WAJV Fee - WAJV is authorized the cost of associated fee as outlined in the contract. This fee covers the contractor's profit, home office expenses and overhead, general and administrative overhead and any other general expenses., Gross Receipts Tax - WAJV is authorized costs for the required Gross Receipts Tax as applicable.
	DA-4337/CGMP04		0008	\$2,070			RFI 1464 - Added Reinforcing Steel, CGMP Fee, Tax
	DA-4337/CGMP04		0009	\$3,757			CGMP04 Fee, CGMP04 City Tax, JT Wimsatt - RFI 2155 Overpour Details From RFI 1679 - JTW109R1, RFI 1740 - Entrance Alcove Location
	DA-4337/CGMP04		0010		\$314,493		BWG - Revised South Basement Concrete Deck Thickness and Reinforcing Steel Concrete BP-05, CMAR Fee, CGMP04 City Tax
	DA-4337/CGMP04		0011		\$222,283		BWG - N11 Line Footing Pedestal Size Increase Concrete BP-05, JT Wimsatt - JAMA Structural Observation Report 8/6/10, JT Wimsatt - Concrete BP-05, Wall Sleeves at all Basement Walls Concrete BP-05, RFI 1801 Mechanical Heat Exchange Room Leave Out, CGMP04 Fee, CGMP04 City Tax

### Bradley West Element

#### DA-4337 - BRADLEY WEST GATES (DA-4337)

DA-4337/CGMP04	0012	\$91,794		JT Wimsatt - Additional Formwork to Expedite the North Basement, CGMP04 Fee, CGMP04 City Tax
DA-4337/CGMP05	0006		\$665,645	Southwest Steel - BWG Compiled Bulletin 0 dated 04/02/2010 (Misc. Metals), CMAR Fee, City Tax
DA-4337/CGMP07	0003		\$190,905	Desert Plumbing & CD 0015 Bulletin 0 dated 20100402 (Plumbing - Desert)dated 20100402 (Plumbing - Desert)- BWGA, CMAR Fee, City Tax
DA-4337/CGMP07	0005	\$20,401		BWG RFI 2738 Pump Skid Epoxy Paint (WAL 082) - HVAC - BWGA, CMAR Fee, City Tax
DA-4337/CGMP09	0001	(\$237,862)		WAJV - Fee, O.C. Plastering - RFI 2779 Densglass Removal at Exterior Soffits, WAJV - City Tax

#### DA-4382 - BRADLEY WEST CORE (DA-4382)

DA-4382/CGMP03	0004	(\$2,690)		10 Inch Domestic Water Line Tie-In, CMAR Fee, City Tax
DA-4382/CGMP04	0013	\$10,586		CMAR Fee, City Tax, WE ONeil - Enabling Temporary Emergency Egress: Move Furniture and Install Plan Table at Trailer C
DA-4382/CGMP04	0014	\$2,913		WAJV Fee - WAJV is authorized the cost of associated fee as outlined in the contract. This fee covers the contractor's profit, home office expenses and overhead, general and administrative overhead and any other general expenses., Gross Receipts Tax - WAJV is authorized costs for the required Gross Receipts Tax as applicable., Stop Work Order - Temporary Core Egress - Stair #28
DA-4382/CGMP05	0003		\$151,715	Design Package #2, Bulletin 2, (PVC Roof - Troye, WAJV Fee, City Tax
DA-4382/CGMP05	0004		\$644,857	CC-B0 Core Compiled Bulletin 0 Metal Roof, WAJV Fee, City Tax

## CHANGE ORDERS - Continued as of 1/31/2011

Element	Project	Contract	Change Order No	< \$150K	\$150K - \$1Mil	> \$1Mil	Notes
<b>CUP Replacement Element</b>							
<b>Utilities &amp; Infrastructure Element</b>							
<b>Landside Element</b>							
<b>Residential/Soundproofing Element</b>							
<b>Terminal Element</b>							
<b>T001A - ELEVATORS AND ESCALATORS REPLACEMENT</b>							
	DA-4371		0003	\$0			Time Extension to cover delays due to unforeseen site conditions. 105 Days.
<b>TBIT Renovation Element</b>							

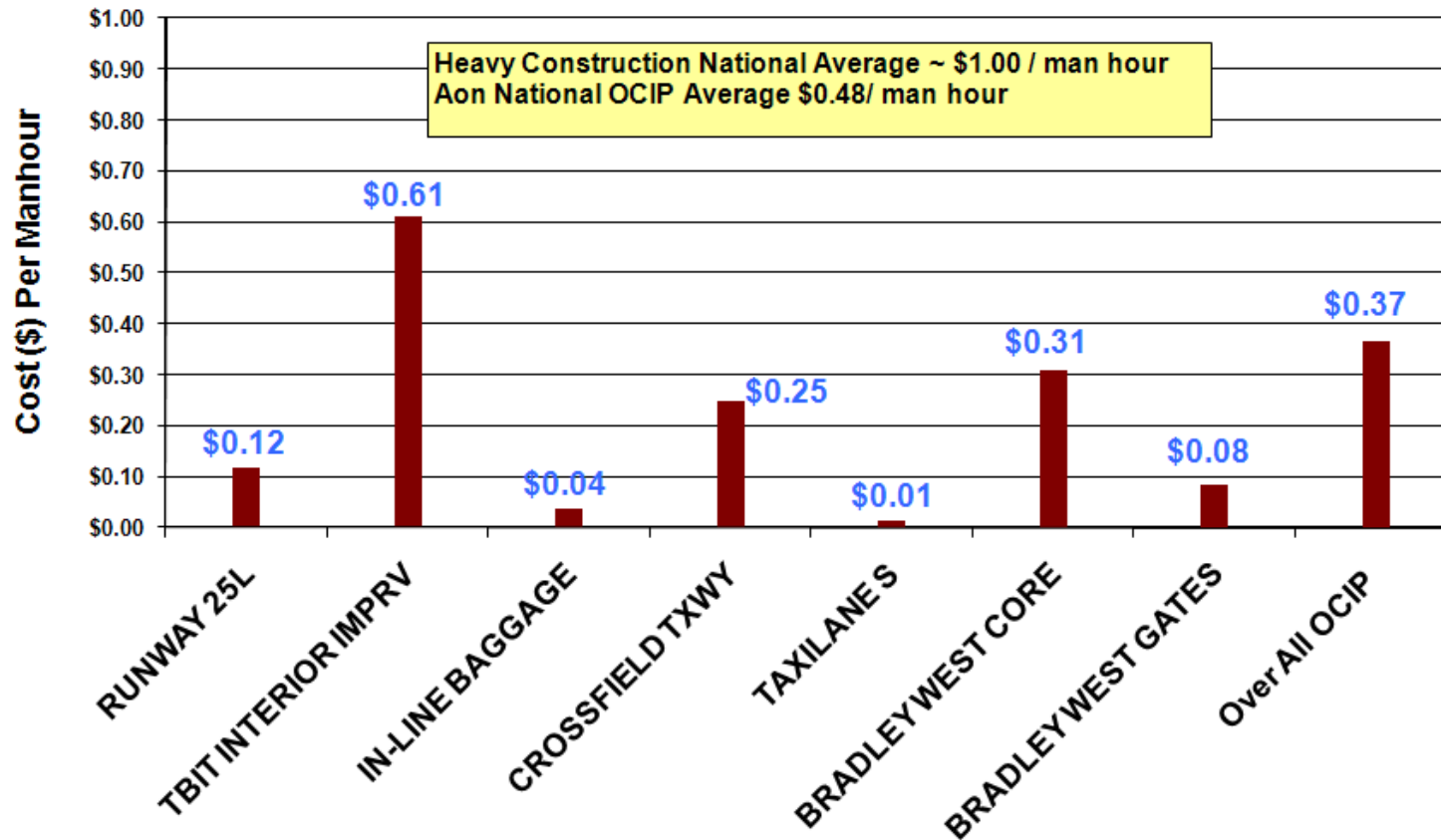
### Bradley West- Gates

CHANGE TYPE	EXECUTED CHANGES (CUMMULATIVE \$)	APPROVED CHANGES (CUMMULATIVE \$)	SUBTOTAL	% OF CONTRACT VALUE
DESIGN EVOLUTION	\$5,187,709.00	\$7,261,647.00	\$12,449,356.00	2.28%
DOCUMENT CORRECTION	\$186,124.00	\$115,768.00	\$301,892.00	0.06%
FIELD CONDITIONS	\$220,906.00	\$164,347.00	\$385,253.00	0.07%
OWNER BETTERMENT	\$2,837,478.00	(\$28,318.00)	\$2,809,160.00	0.51%
CODE REQUIREMENT	\$135,114.00	\$72,601.00	\$207,715.00	0.04%
<b>TOTAL</b>	<b>\$8,567,331.00</b>	<b>\$7,586,045.00</b>	<b>\$16,153,376.00</b>	<b>2.96%</b>

### Bradley West- CORE

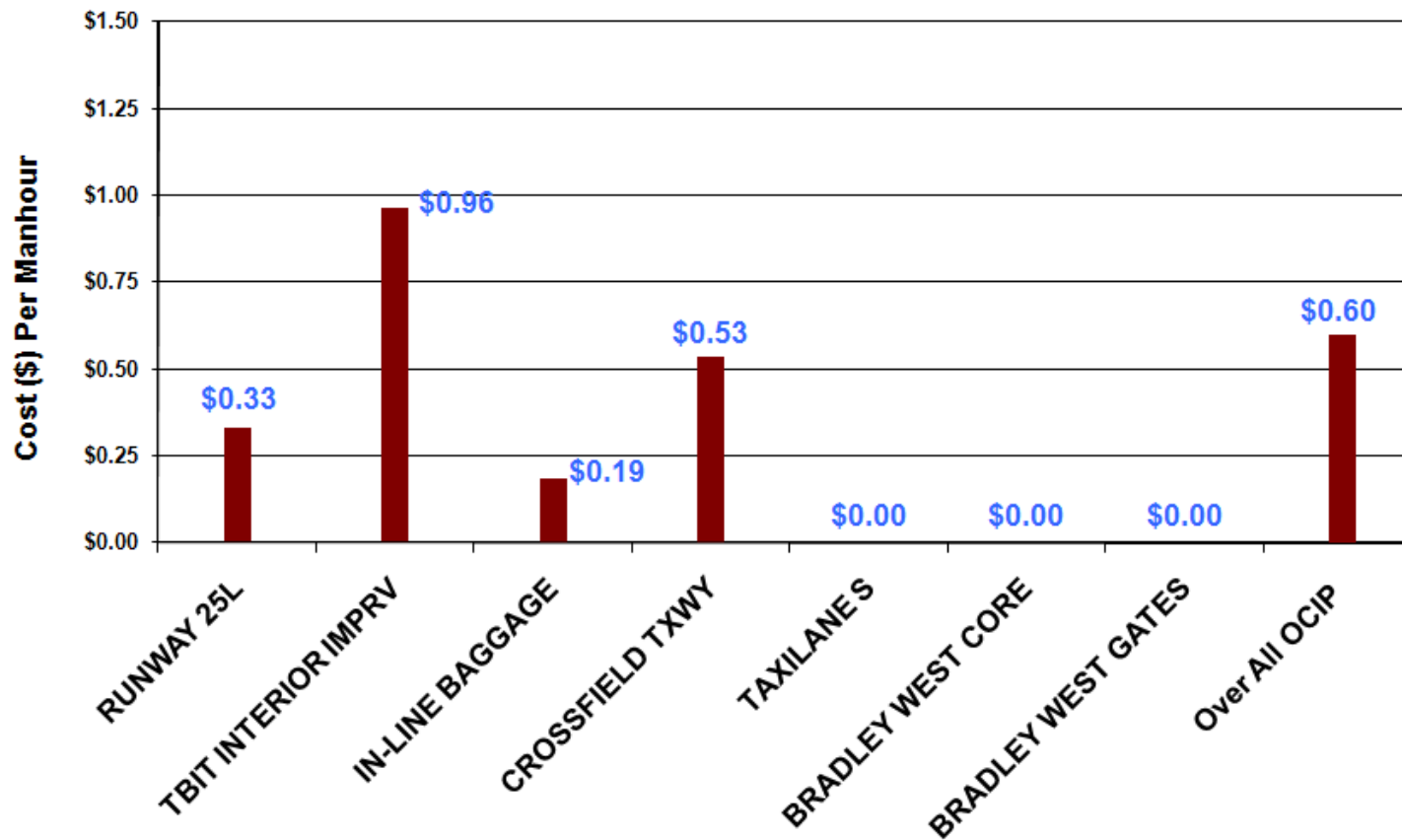
CHANGE TYPE	EXECUTED CHANGES (CUMMULATIVE \$)	APPROVED CHANGES (CUMMULATIVE \$)	SUBTOTAL	% OF CONTRACT VALUE
DESIGN EVOLUTION	\$3,529,130.00	\$2,641,333.00	\$6,170,463.00	1.06%
DOCUMENT CORRECTION	(\$58,798.00)	\$0.00	(\$58,798.00)	(\$0.00)
FIELD CONDITIONS	\$451,560.00	\$971,532.00	\$1,423,092.00	0.24%
OWNER BETTERMENT	\$3,794,270.00	\$7,523.00	\$3,801,793.00	0.65%
CODE REQUIREMENT	\$105,819.00	\$0.00	\$105,819.00	0.02%
<b>TOTAL</b>	<b>\$7,821,981.00</b>	<b>\$3,620,388.00</b>	<b>\$11,442,369.00</b>	<b>1.96%</b>

**LAWA OCIP Workers Compensation Loss Performance  
- as of December 31, 2010 -**



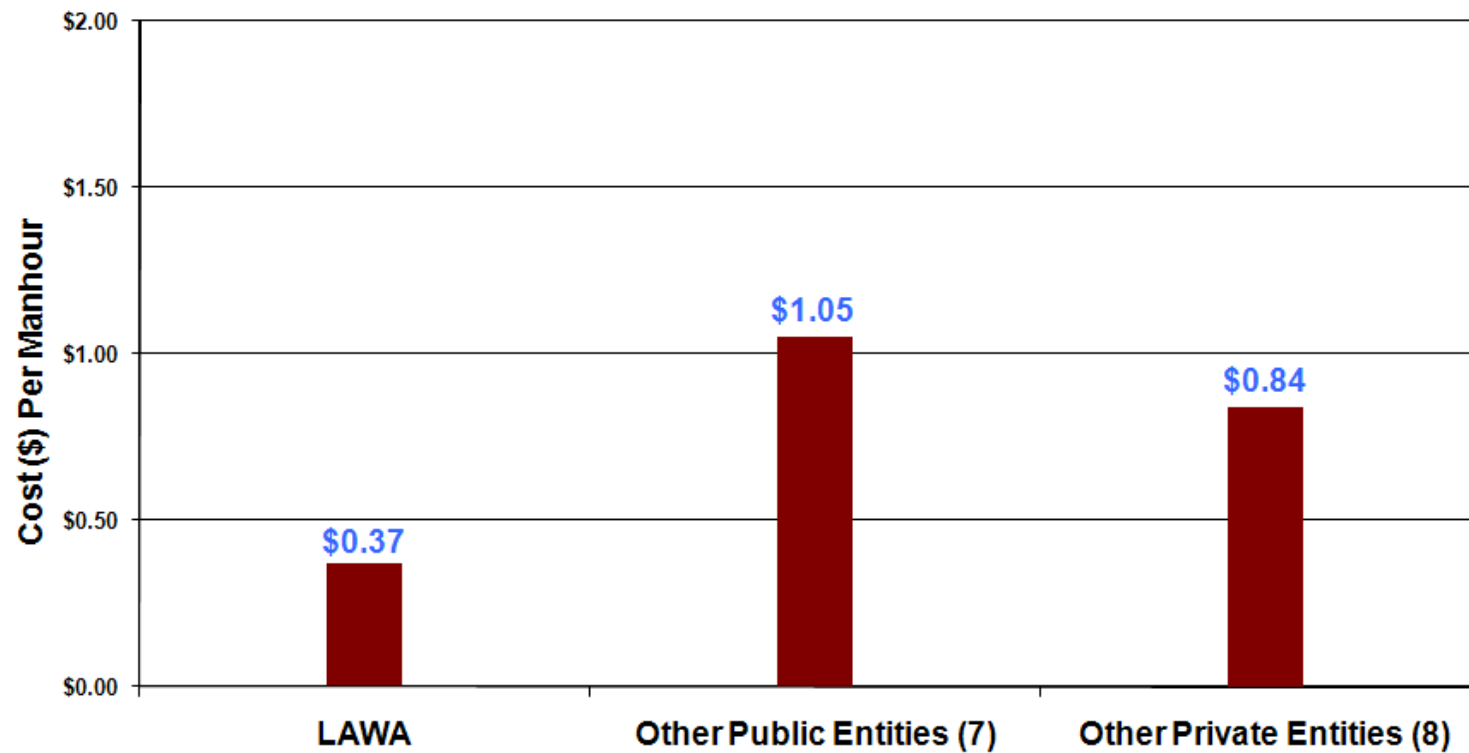
**OCIP - Continued**  
 as of 12/31/2010

**LAWA OCIP General Liability Loss Performance**  
 - as of December 31, 2010 -





**Current Large OCIP Projects  
Comparison of Workers Comp Costs Per Manhour**



## MWBE/DBE

# Subcontractor Utilization Summary Report as of 12/31/2010

Firm	Contract No.	DBE or M/WBE Contract	Proposed Level of Participation	Achieved Participation to Date*				Remarks
				M/WBE	DBE			
AECOM Technical Services, Inc.	DA-4260	DBE	12.00 %	N/A %	19.51 %			
CH2M Hill	DA-4414	M/WBE	22.00 %	35.85 %	N/A %			
Fentress Architects	DA-4274	DBE	9.30 %	15.66 %	6.97 %			
Flatiron West, Inc.	DA-4398	DBE	1.00 %	0.09 %	18.11 %			
Griffith Company	DA-4315	M/WBE	9.60 %	9.95 %	N/A %			
Griffith Company	DA-4338	M/WBE	6.60 %	2.44 %	N/A %			
Griffith Company	DA-4478	M/WBE	23.70 %	29.55 %	N/A %			
Griffith Company	DA-4498	DBE	0.35 %	N/A %	0.00 %			
Hatch Mott MacDonald, LLC	DA-4275	DBE	11.63 %	N/A %	21.57 %			
Hellmuth, Obata + Kassabaum,	DA-4313	M/WBE	25.00 %	38.63 %	N/A %			
Jacobs Project Management Co.	DA-4417	M/WBE	25.00 %	0.00 %	N/A %			
Paragon Project Resources, Inc.	DA-4332	M/WBE	16.00 %	5.48 %	N/A %			
Parsons Transportation Group,	DA-4415	M/WBE	23.00 %	51.41 %	N/A %			
Pasley Management Group	DA-4324	M/WBE	10.00 %	16.03 %	N/A %			
R & L Brosamer	DA-4331	M/W/DBE	15.40 %	7.61 %	3.26 %			Combined = MBE+WBE+DBE = 10.87%
Technion Contractors	DA-4462	M/WBE	0.16 %	0.14 %	N/A %			
Tobo Construction	DA-4354	DBE	0.00 %	14.59 %	2.33 %			
Vanir Construction Management,	DA-4416	M/WBE	20.00 %	18.44 %	N/A %			
W.E. O'Neil	DA-4371	M/WBE	6.80 %	10.42 %	N/A %			
Walsh Austin Joint Venture - Pre-Construction (Gates)	DA-4337	M/WBE	20.00 %	31.40 %	N/A %			
Walsh Austin Joint Venture - Construction (Gates)	DA-4337	M/WBE	14.00 %	12.93 %	N/A %			
Walsh Austin Joint Venture - Pre-Construction (Core)	DA-4382	M/WBE	20.00 %	26.46 %	N/A %			
Walsh Austin Joint Venture - Construction (Core)	DA-4382	M/WBE	14.00 %	14.77 %	N/A %			
<b>Total Participation:</b>	<b>N/A</b>	<b>N/A</b>	<b>N/A</b>	<b>10.86%</b>	<b>6.04%</b>			
<b>Total Combined Participation:</b>	<b>N/A</b>	<b>N/A</b>	<b>N/A</b>	<b>16.90%</b>				

\*Achieved Participation to Date includes progress in the pledged program and progress outside of the pledge.

