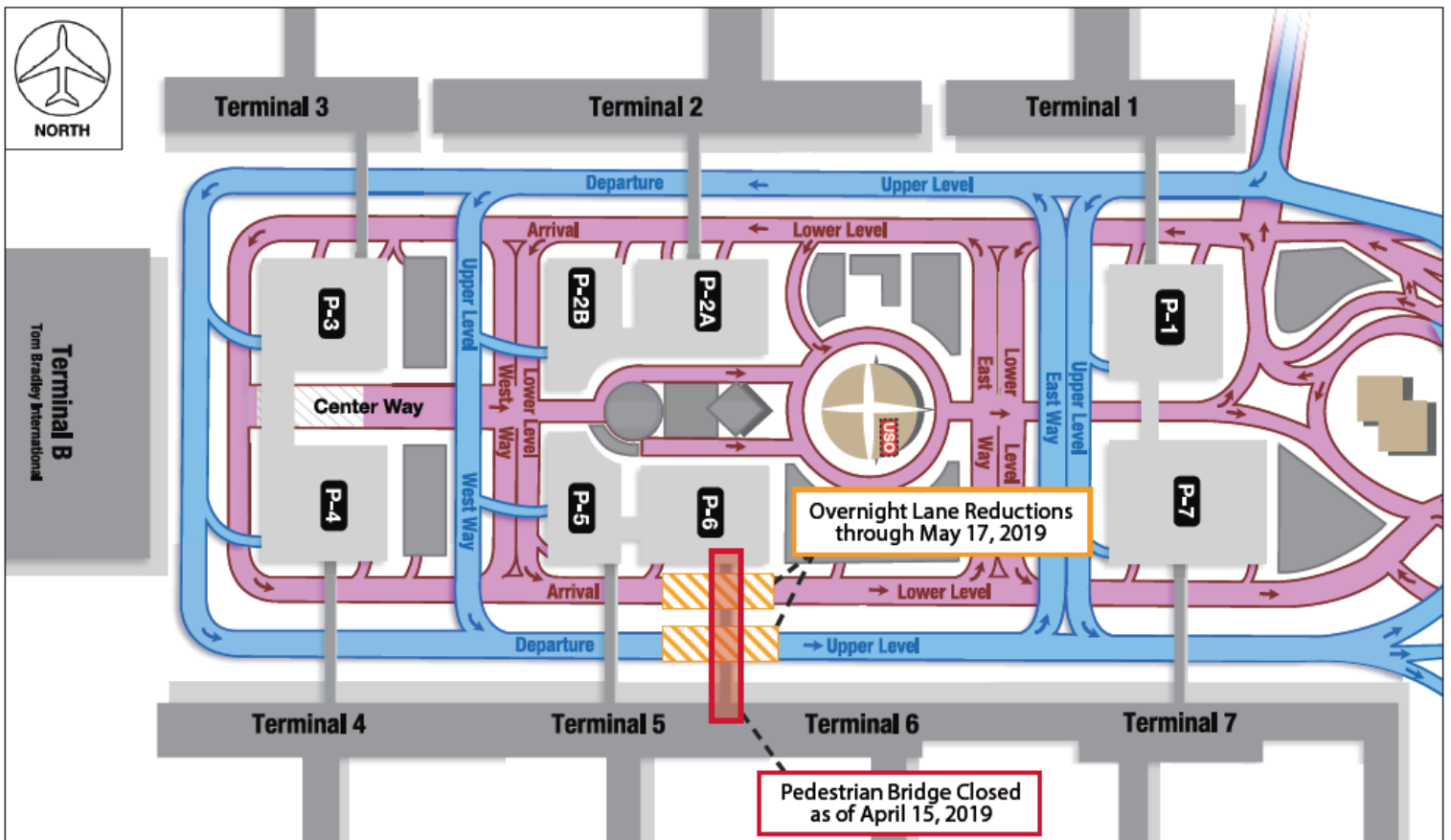


Construction Hot Topics

Week of April 15 – 19, 2019

1. Terminal 6 / Parking Structure 6: Pedestrian Bridge Closure

- The Pedestrian Bridge between Terminal 6 and Parking Structure 6 permanently closes the night of Monday, April 15 in preparation for its demolition in mid-May 2019
- Nightly lane restrictions on both Arrivals and Departures Levels roadways will occur through mid-May in preparation for the demolition
- Watch Construction Hot Topics for updates on this project



Pedestrian Bridge Demolition at Terminal 6

Construction Hot Topics

Week of April 15 – 19, 2019

2. Terminals 2 / 3: New Construction Barricades; Elevator / Escalator Closures

- Barricades are being built nightly between Terminals 2 and 3 for construction of the new Head House as part of the Delta Sky Way Project; the connecting area between the two terminals is now closed to the travelling public
- Elevators and escalators at this connector area are also closed ; detour signage is in place
- The Delta Sky Way Project (Phase 1) is scheduled to be complete in 2021



*Terminal 2: Escalator 10 Closed
(Along with Escalator 2 at Terminal 2 and Escalator 1 at Terminal 3)*

Construction Hot Topics

Week of April 15 – 19, 2019

3. UPDATE - Terminal 4: Construction Barricades

- Construction barricades at Terminal 4, Baggage Claim expand nightly this week for work related to American Airlines' Terminal 4 Bag Claim Modifications Project
- The Info Booth at this area will be relocated the night of May 16; it is scheduled to be re-opened and operational the morning of May 17
- New barricades will receive finishes as work progresses, followed by "Arriving Soon" graphics
- Baggage Claim #2 remains closed and Claim #1 will close in mid-May when barricades extend



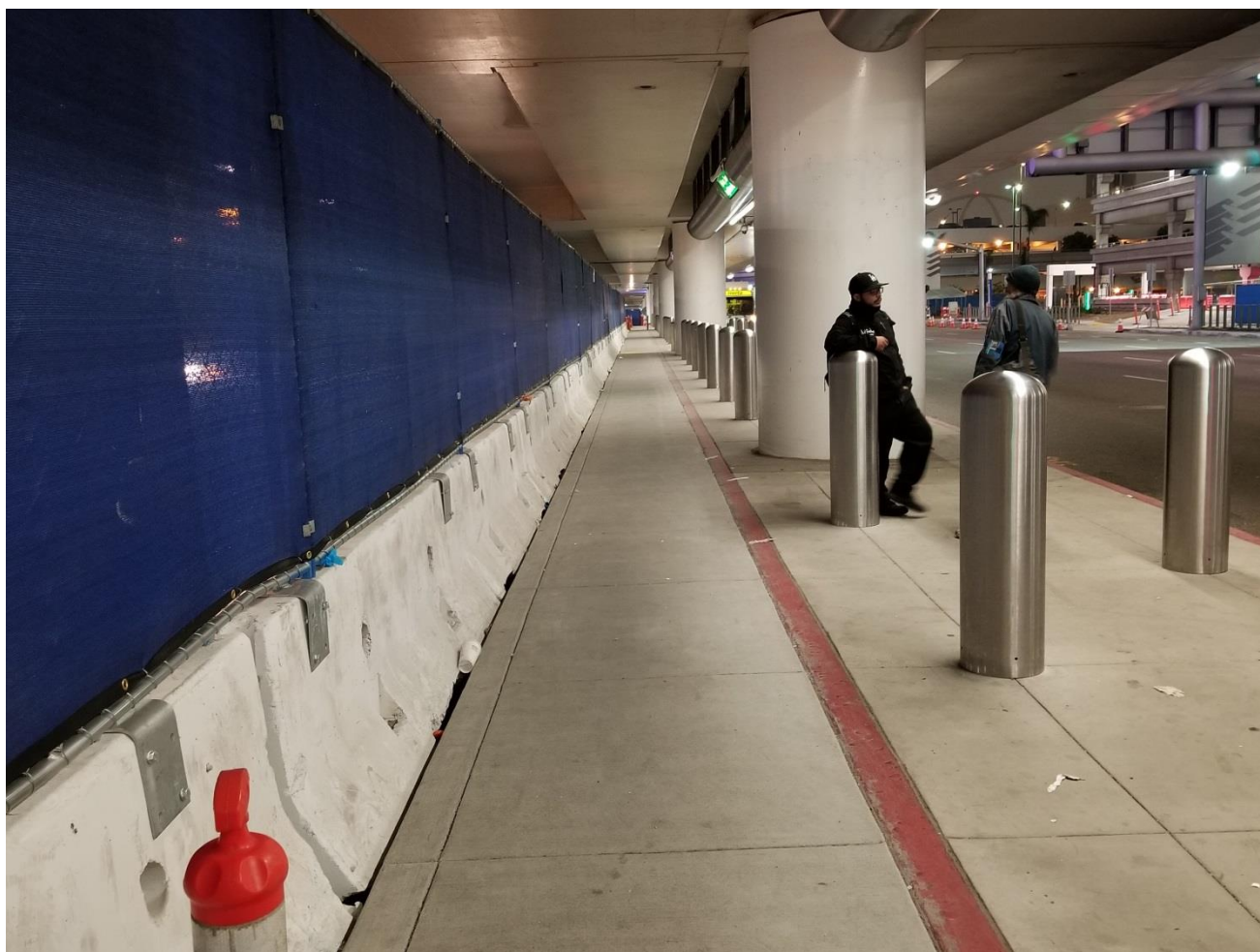
Terminal 4, Arrivals Level

Construction Hot Topics

Week of April 15 – 19, 2019

4. Terminal 3: Rental Car Shuttle Zone Re-Opened

- The Rental Car Shuttle zone at Terminal 3, which was closed last week as work occurred to widen the median island, is now re-opened
- All Arrivals Level inner lanes between Columns 3C and 3H remain closed through early August 2019 for underground utility work related to the Delta Sky Way Project



*Arrivals Level Terminal 3:
Widened Rental Car Shuttle Stop Curb*