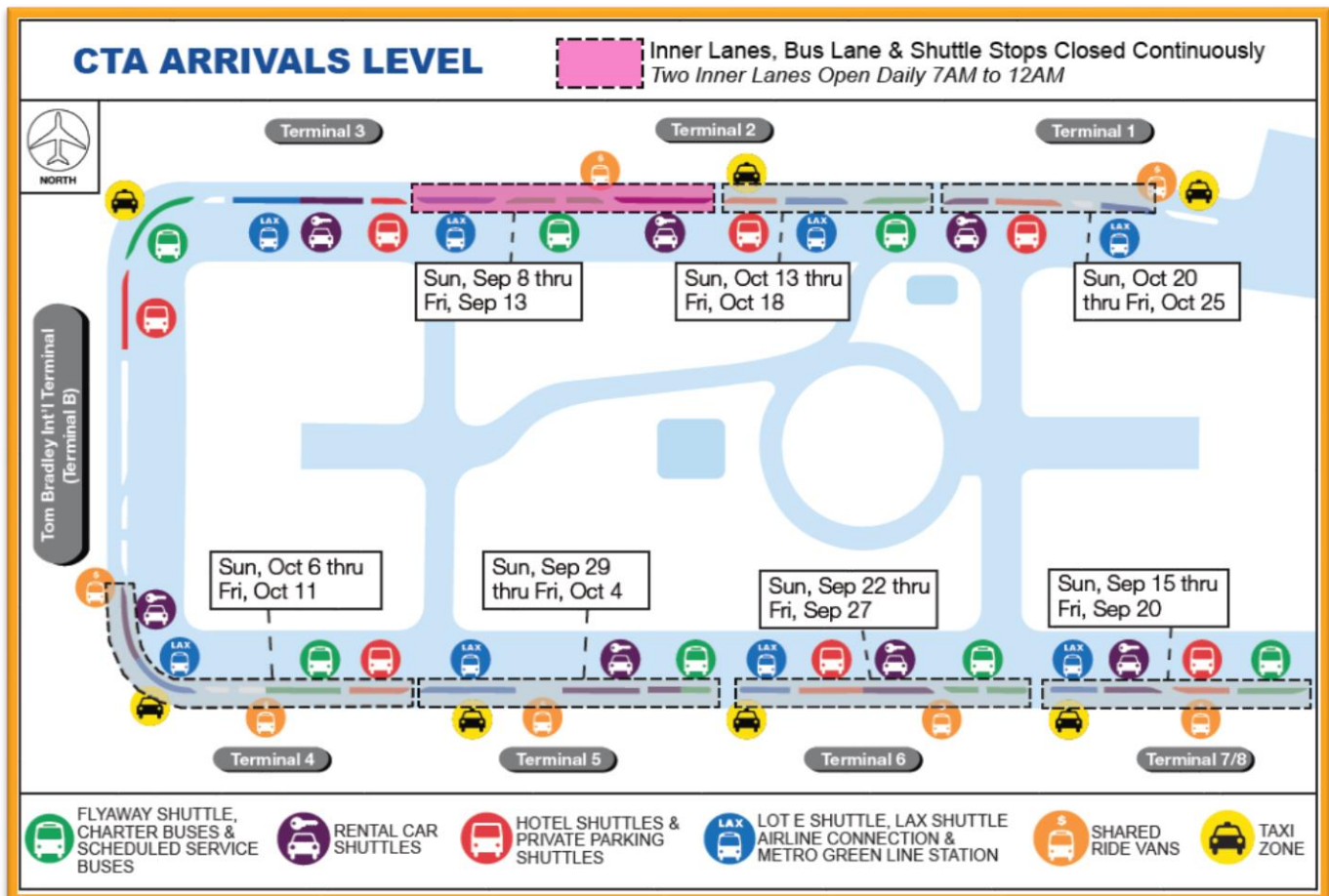


# Construction Hot Topics

Week of September 9, 2019

## 1. CTA Arrivals Level Shuttle Stop Curb Extension

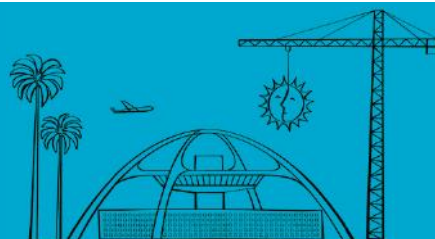
- The Interim Ground Access project (LAX-It Lot) will restrict portions of the Arrivals Level Inner Lanes, Bus Lane and shuttle stops through Friday, October 25 to widen the curb at the shuttle stop islands
- Work will be performed in seven phases with the first phase occurring this week at Terminal 2
- Traffic is maintained and signage will be posted guiding pedestrians to the next available shuttle stop as necessary



CTA Arrivals Level:  
Shuttle Stop Curb Extension Phasing

Change is in the Air(port).

**LAX** WAY BETTER. REALLY.

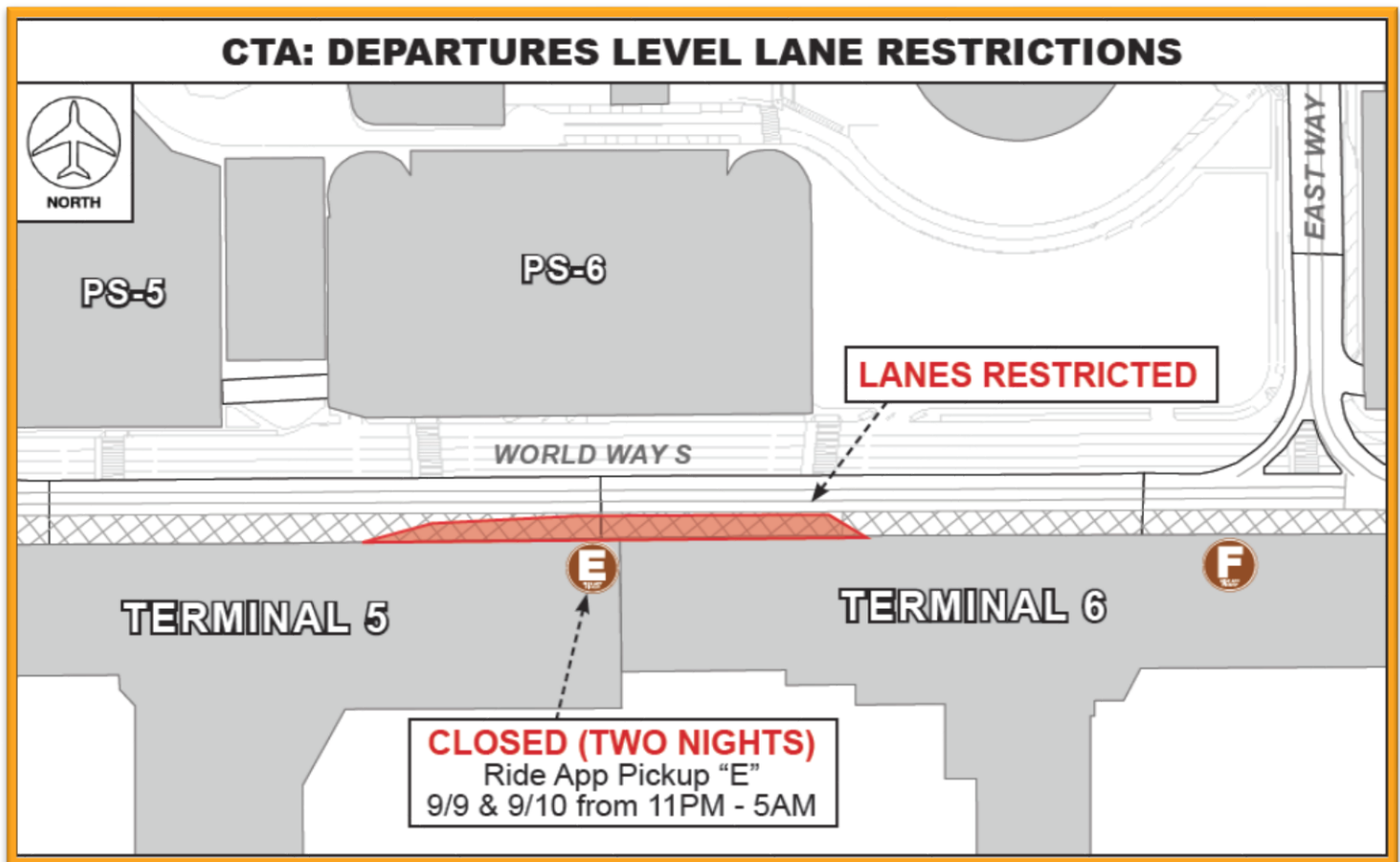


# Construction Hot Topics

Week of September 9, 2019

## 2. Terminal 5.5 Departures Level Canopy Demolition

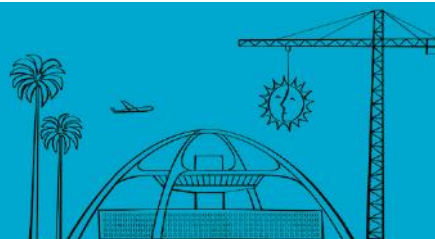
- Both drop off lanes and the sidewalk between Terminals 5 and 6 (Departures) are closed continuously through November 15 while the canopy is demolished for future Terminal Cores and Automated People Mover construction
- Pedestrian Detours: Daily (6am – 10pm) routed outside via outermost drop off lane or inside via terminal; Nightly (10pm – 6am) routed inside via terminal only
- Ride App Pickup “E” will be closed Monday, September 9 and Tuesday, September 10 from 11PM to 5AM; pickup “D” and “F” remain available



Terminal 5 Departures Level:  
Drop Off Lane & Sidewalk Restrictions

Change is in the Air(port).

**LAX** WAY BETTER. REALLY.



# Construction Hot Topics

Week of September 9, 2019

## 3. Terminal 5.5 Arrivals Level Construction Barricades

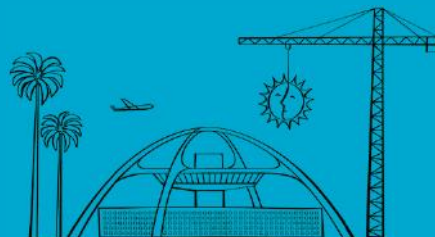
- The sidewalk between Terminals 5 and 6 (Arrivals) is closed continuously through November 15 for Terminal Cores and Automated People Mover construction
- Construction barricades are being built this week; pedestrians are routed inside via the terminal
- At night (10pm – 6am) the innermost Inner Lane is closed; traffic, crosswalks and shuttle stops are maintained at all times



*Terminal 5 Arrivals Level:  
Sidewalk Restrictions & Construction Barricades*

Change is in the Air(port).

**LAX** WAY BETTER. REALLY.





# Construction Hot Topics

Week of September 9, 2019

## 4. Terminal 5: Ticket Counter Construction

- Construction barricades are being built following the successful relocation of Jet Blue, Allegiant Air and Sun Country airlines ticket counter for future Terminal 5.5 Core construction
- Barricades are scheduled to be completed this week, after which they'll receive "Arriving Soon" graphics

*Terminal 5 Ticketing:  
Construction Barricades*



## 5. Terminal 1: TSA Checkpoint Restrictions

- TSA Checkpoint Lanes 6 and 7 in Terminal 1 will be closed nightly (12pm – 6am) through September 27 for facility upgrades including new CT X-ray machine upgrades
- Passengers may utilize all remaining TSA checkpoints for security screening

*Terminal 1, TSA Checkpoint*

Change is in the Air(port).

**LAX** WAY BETTER. REALLY.

