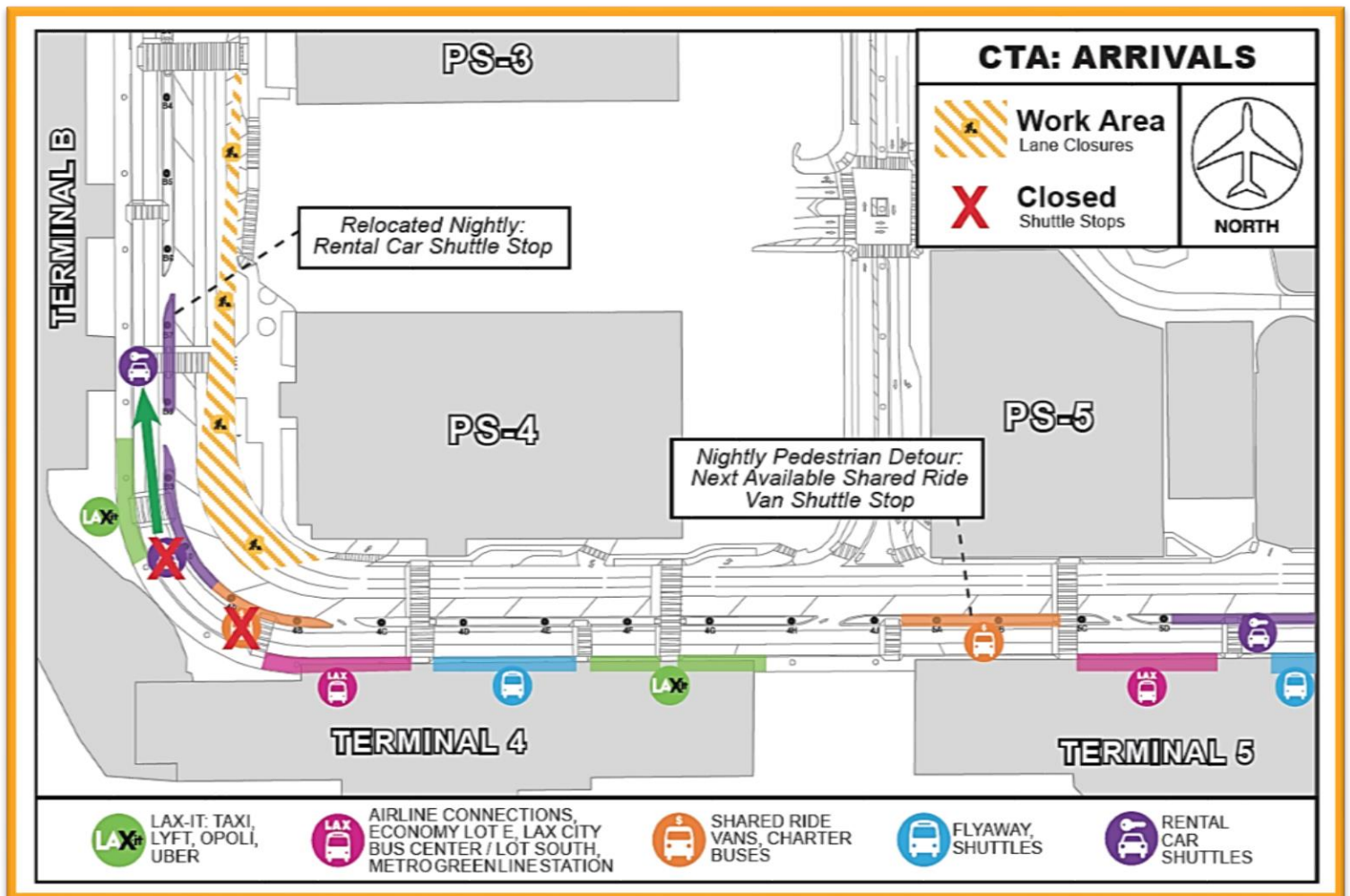


Construction Hot Topics

Week of October 5, 2020

1. EXTENDED Terminal B / 4: Arrivals Lane Restrictions & Shuttle Impacts

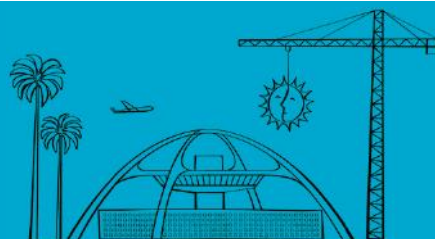
- The Automated People Mover (APM) project will restrict three Arrivals Level Outer Lanes at the South Knuckle nightly (12AM to 7AM) through October 7 (extended from September 30)
- The Rental Car Shuttle Stop between Terminal B and Terminal 4 will be relocated nightly to Terminal B with signage in place
- The Shared Ride Van Shuttle Stop between Terminal B and Terminal 4 will be closed nightly with signage in place directing guests to the next available stop at Terminal 5



Arrivals Level South Knuckle Restrictions extended through 10/7/20

Change is in the Air(port).

LAX WAY BETTER. REALLY.

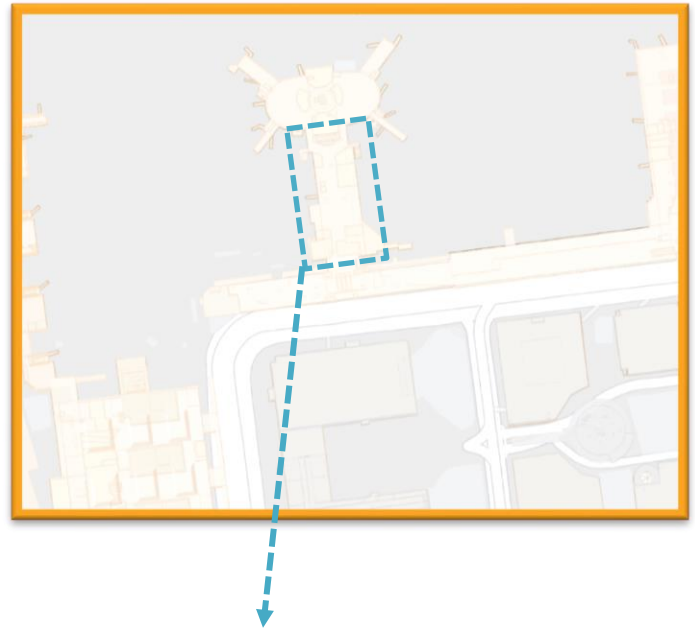


Construction Hot Topics

Week of October 5, 2020

2. Terminal 3: Construction Update

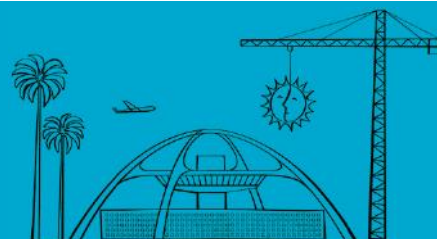
- Construction of the new Terminal 3 continues with steel erection as part of the Delta Sky Way program
- Pictured below, progress is visible airside on the new building where the old Terminal 3 concourse hall to the satellite building once stood
- As construction on Terminal 3 continues, it will remain closed to the public



Terminal 3 Construction Progress

Change is in the Air(port).

LAX WAY BETTER. REALLY.

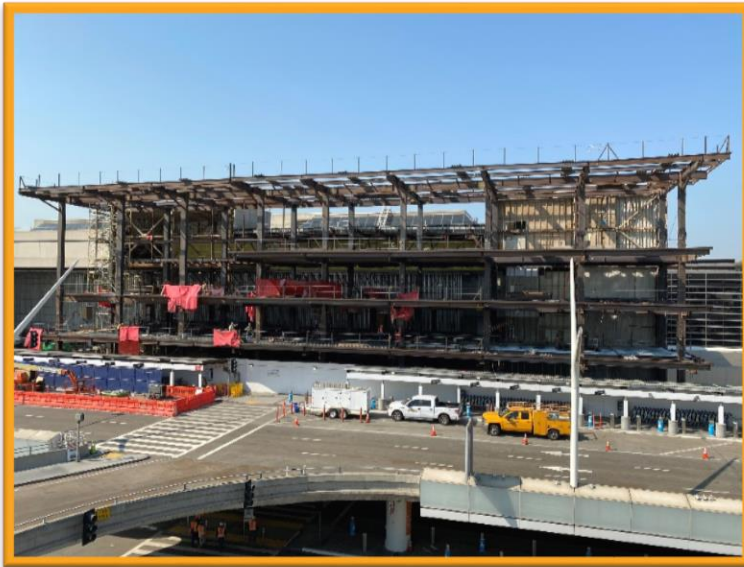


Construction Hot Topics

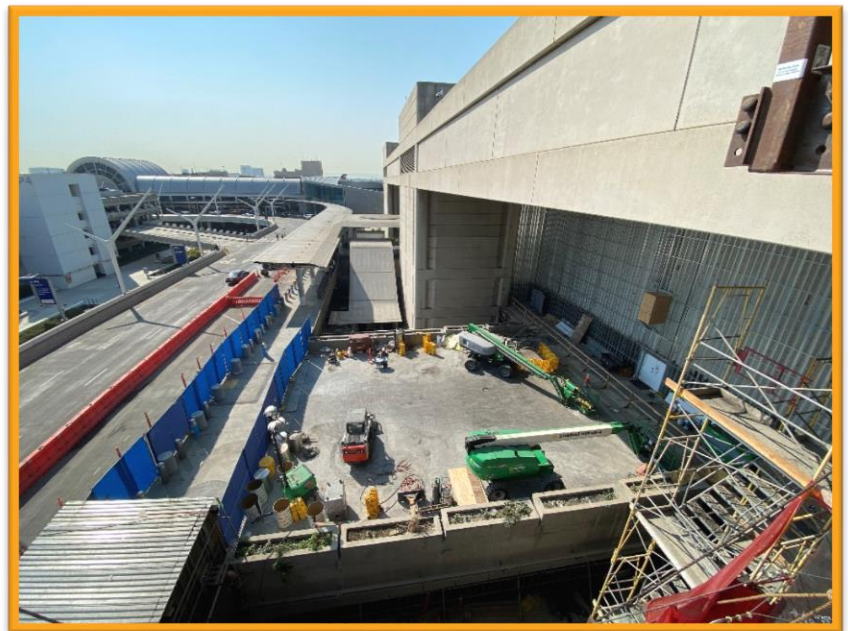
Week of October 5, 2020

3. TBIT Core: Construction Update

- The TBIT Core project continues with demolition and structural steel erection at the face of Tom Bradley International Terminal
- Lane restrictions are in place on Departures Level drop-off lanes to facilitate construction of a temporary pedestrian walkway to detour guests around construction; a temporary pedestrian walkway is in use on the Arrivals Level for the same reason
- Upon completion, the future TBIT Core will feature elevators and escalators, interior modifications including restrooms, concessions and office space, as well as a connecting pedestrian bridge to the APM's future West CTA Station between Parking Structure 3 and 4



*TBIT Core Construction
Progress Photos
October 2020*



Change is in the Air(port).

LAX WAY BETTER. REALLY.

