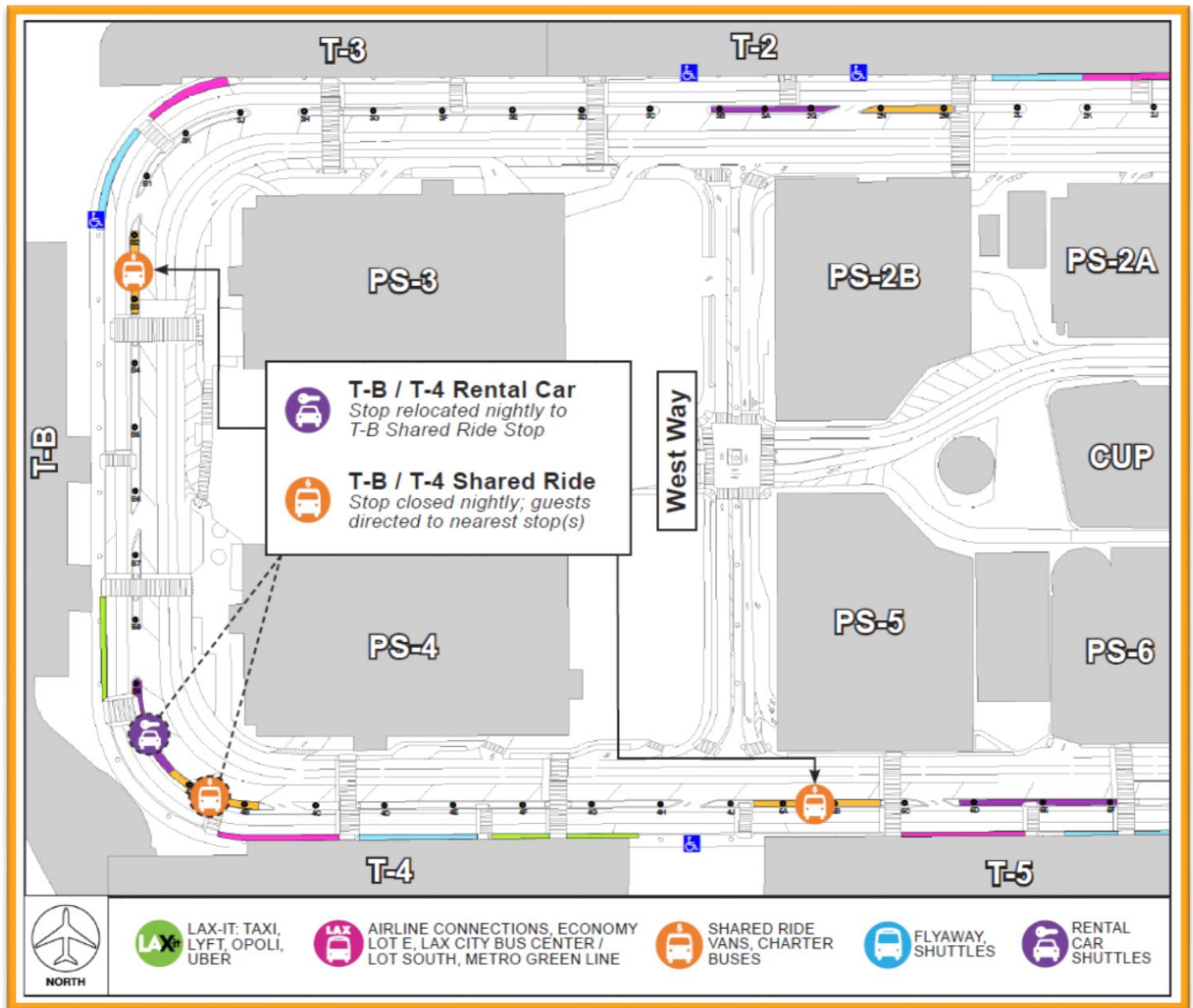


Construction Hot Topics

Week of September 27, 2021

1. Arrivals Level Lane & Shuttle Stop Restrictions: South Knuckle

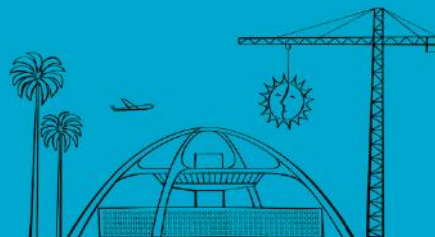
- To facilitate utility work by SoCalGas, portions of Arrivals Level lanes between Terminal B and Terminal 4 will be restricted nightly (1:30AM to 7AM) from September 27 through October 4
- The South Knuckle Rental Car Stop will be temporarily relocated to Terminal B (co-located with existing Shared Ride Stop)
- The South Knuckle Shared Ride Van Stop will be closed with guests directed to the next available stop (Terminal B or Terminal 5)



SoCalGas Lane & Shuttle Restrictions at South Knuckle 9/27 – 10/4

Change is in the Air(port).

LAX WAY BETTER. REALLY.



Construction Hot Topics

Week of September 27, 2021

2. Terminal 2.5 Pedestrian Bridge Progress

- Construction of the new Pedestrian Bridge at Terminal 2.5 made great progress last week with the successful installation of steel trusses between Terminal 2 and the APM's future Center CTA Station (between Parking Structure 2A and 2B)
- While this marks a major milestone in construction of the Pedestrian Bridge, additional nightly lane closures will be needed for additional work including removal of the Shoring Tower (yellow structure in photo below) in late October
- Watch Construction Hot Topics for updates on future lane closures and impacts



Structural components of the T2.5 Pedestrian Bridge have been installed over both level roadways

Change is in the Air(port).

LAX WAY BETTER. REALLY.

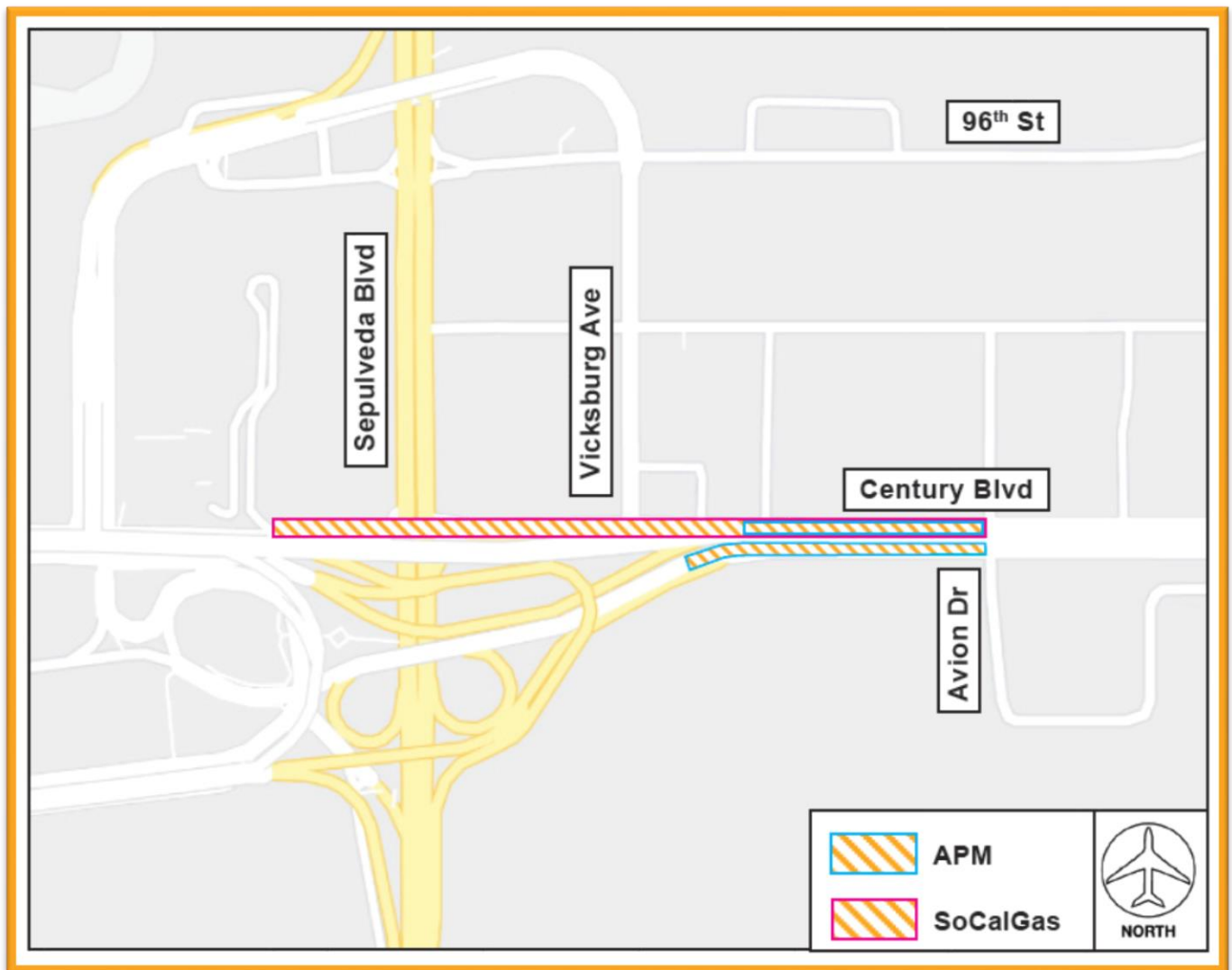


Construction Hot Topics

Week of September 27, 2021

3. Century Boulevard: Impacts to Airport Entrance

- Guideway construction by the Automated People Mover and utility work by SoCalGas will impact portions of Century Boulevard leading to the Airport Entrance through October 2021 (APM) and December 2021 (SoCalGas)
- APM construction, which includes constructing the train's guideway over Century Boulevard, will take single-lane closures daily Monday through Friday or multi-lane closures nightly Monday through Friday or daily on Saturdays between Avion Drive and Sepulveda Boulevard
- SoCalGas work will impact westbound Century Boulevard only from Avion Drive to just west of Sepulveda Boulevard
- Traffic will be maintained at all times with signage and flaggers in place



Century Boulevard Construction Impacts from APM & SoCalGas

Change is in the Air(port).

LAX WAY BETTER. REALLY.

