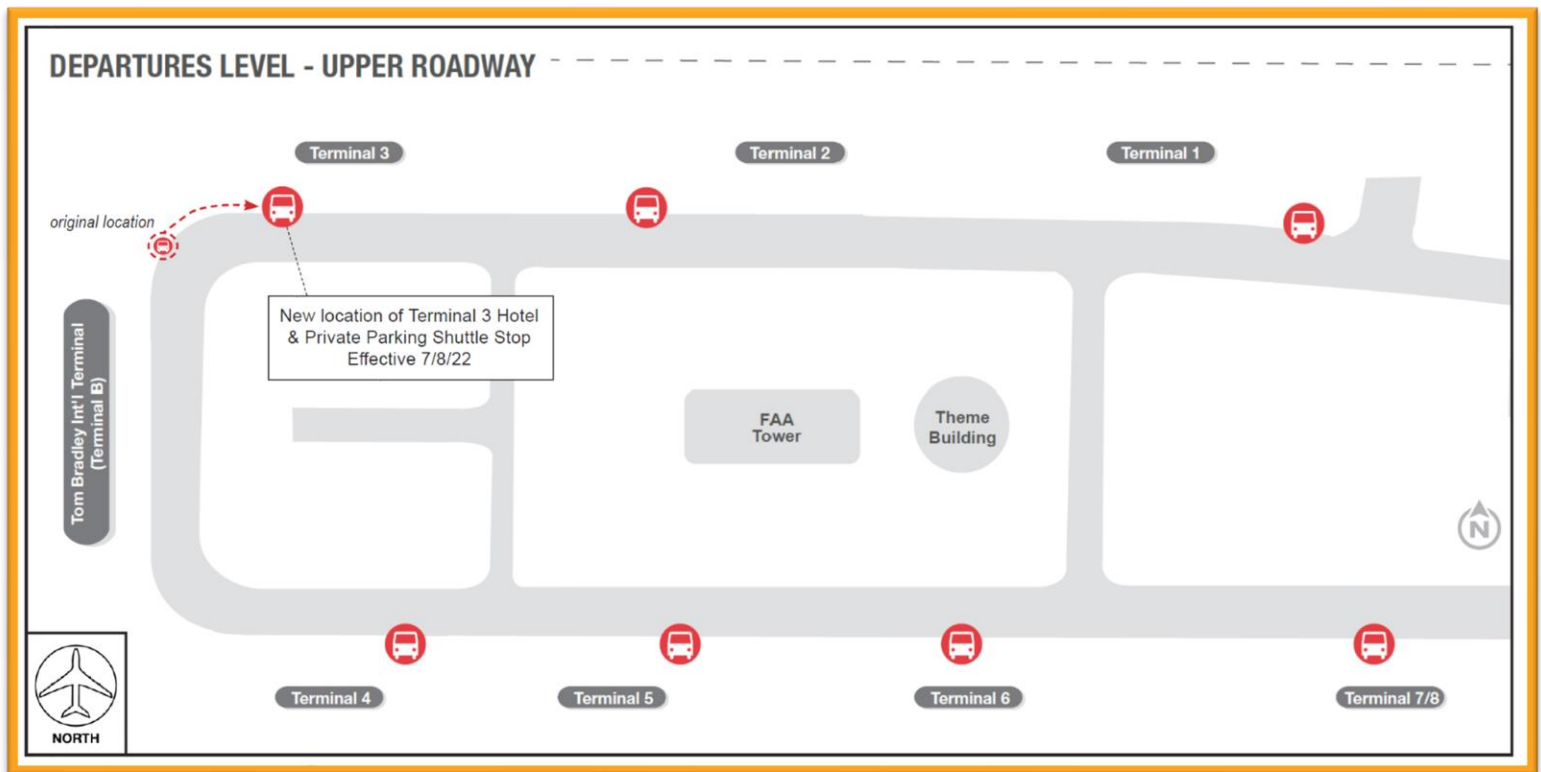


Construction Hot Topics

Week of July 11, 2022

1. North Knuckle: Hotel & Private Parking Shuttle Stop Relocation

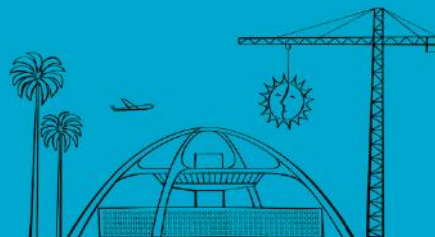
- The Hotel & Private Parking Shuttle Stop, previously located on the Departures Level at the North Knuckle (the area between Terminal 3 and Terminal B) has been relocated closer to Terminal 3 per the map below
- Signage has been updated to reflect this change
- The current LAX Ground Transportation Waiting Areas map can be accessed online at [FlyLAX.com](https://www.flylax.com)



The Departures Level Hotel & Private Parking Shuttle Stop at the North Knuckle has relocated closer to Terminal 3

Change is in the Air(port).

LAX WAY BETTER. REALLY.



Construction Hot Topics

Week of July 11, 2022

2. Terminal B: Construction Update

- Construction continues as part of the Terminal B Vertical Core & APM Interface project
- A portion of the terminal's north end is now open following the completion of a phase of construction; the recently opened area features escalators and elevators to all three levels of the international terminal, as well as a new path to access Baggage Claim 31
- With construction now heavily focused on the south end of the terminal, pictured below, the south entrances are currently closed to the public; the bike rack previously located at the terminal's south end is not located in Parking Structure 4
- Lane restrictions of Departures Level drop-off lanes are in place to facilitate construction; pedestrian sidewalk access is maintained, along with passenger drop-off at the terminal's north end



Lane restrictions are in place on the Departures Level at the south end of Terminal B, near the South Knuckle and Terminal 4

Change is in the Air(port).

LAX WAY BETTER. REALLY.

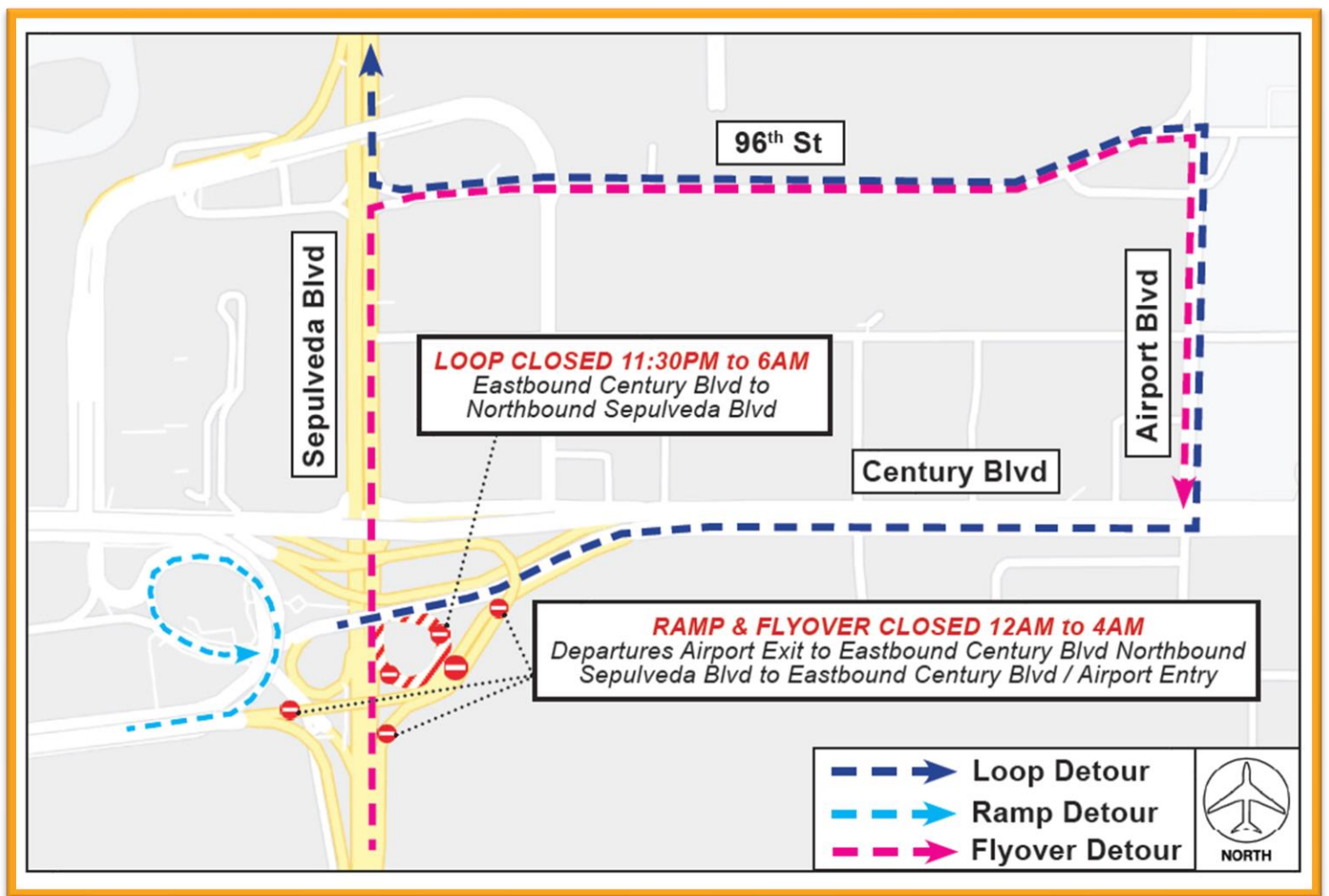


Construction Hot Topics

Week of July 11, 2022

3. LAX East Loop, Ramp & Flyover Scheduled Impacts

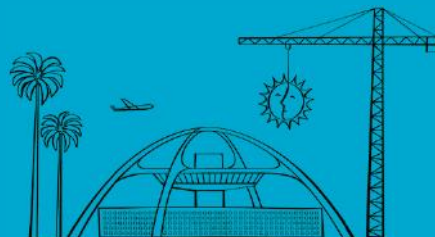
- To perform work for the Automated People Mover project, there will be nightly closures of the following areas starting this week on July 11 through next week on July 20
 - *Eastbound Century Boulevard to northbound Sepulveda Boulevard Loop: 11:30PM to 6AM*
 - *Departures Level Airport Exit to eastbound Century Boulevard Ramp / Northbound Sepulveda Boulevard to Eastbound Century Boulevard / Airport Entry Flyover: 12AM to 4AM*
- Motorists may use Century Boulevard, Airport Boulevard and 96th Street for Loop & Flyover detours, and Departures Level Circle Way to Arrivals Level Center Way for Ramp detours
- Signage is in place



Nightly Impacts to the East Loop, LAX Ramp & Flyover 7/11 – 7/20

Change is in the Air(port).

LAX WAY BETTER. REALLY.



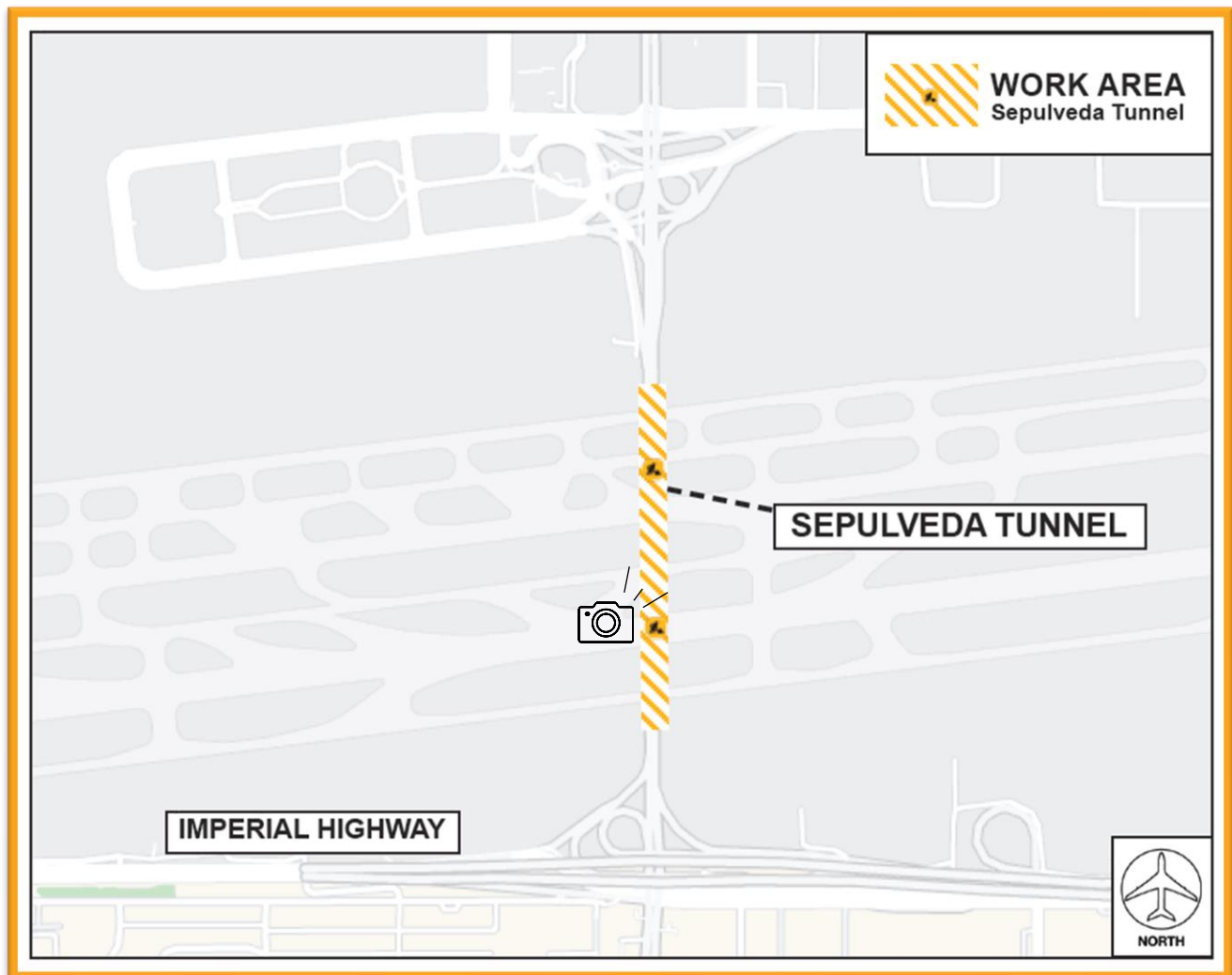
Construction Hot Topics

Week of July 11, 2022

4. Sepulveda Boulevard Tunnel Cleaning

- The Sepulveda Tunnel will experience nightly (11pm – 5am) lane restrictions this week, July 11 – 15, for cleaning by the City of Los Angeles Bureau of Street Services
- Two lanes on either northbound or southbound Sepulveda Boulevard will be closed each night through Friday; one lane will be maintained at all times

Sepulveda Boulevard Tunnel Cleaning by BSS 7/11 – 7/15



Change is in the Air(port).

LAX WAY BETTER. REALLY.

