

Novel Coronavirus (2019-nCoV) Update

February 12, 2020

Coronavirus

- Large family of viruses, some causing illness in people and others circulating among animals.
- Associated with the common cold, pneumonia, and severe acute respiratory syndrome (SARS).
- Can also affect the gut.
- Spread by contact with respiratory droplets.
- Named for the spikes on their membranes which resemble the sun's corona.



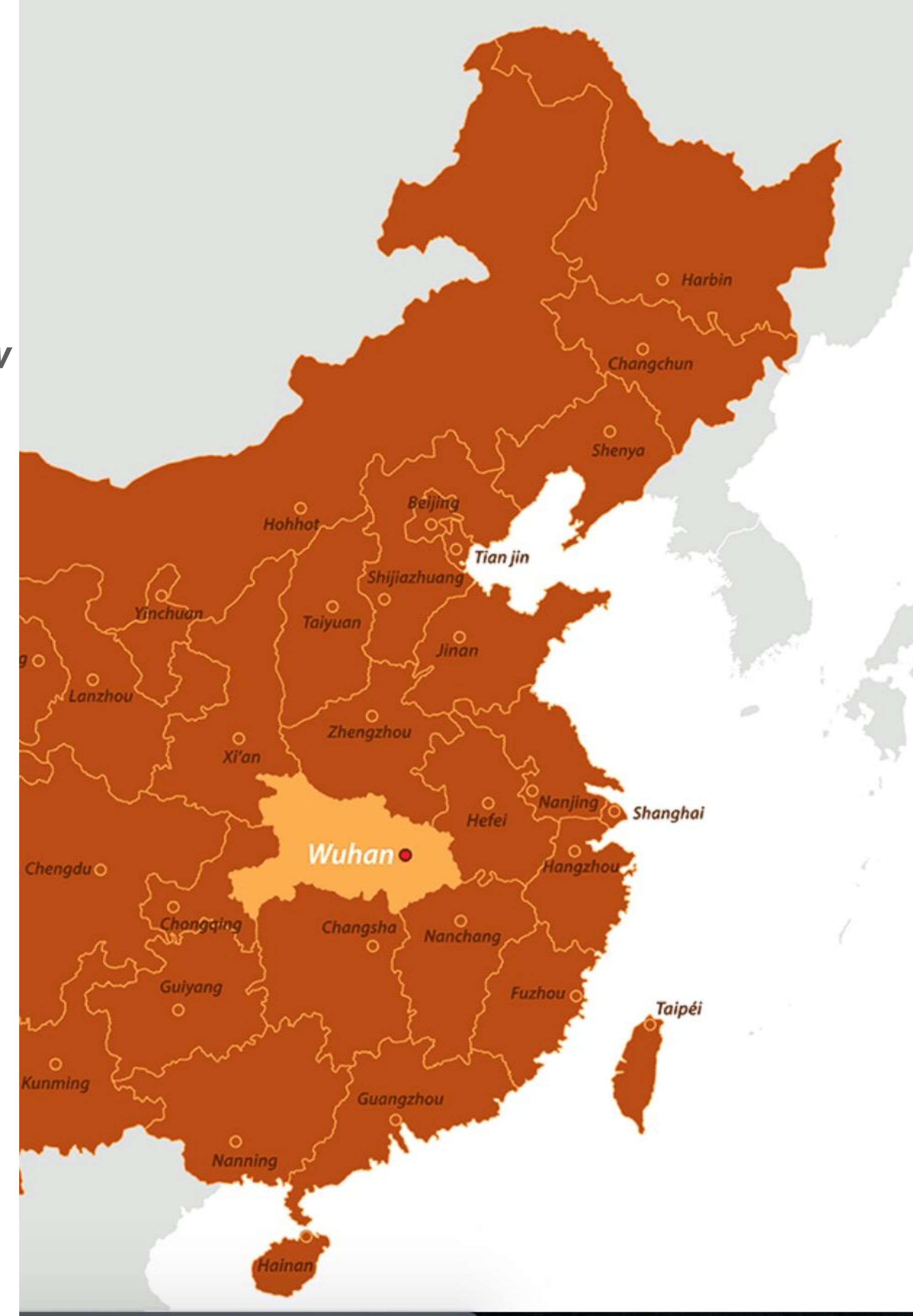
About the current strain

- A new strain of coronavirus has been found—called a novel coronavirus (2019-nCoV)--which began in Wuhan City, Hubei Province, China.
- Human to human transmission has been confirmed by the Centers for Disease Control and Prevention (CDC). Most cases are between people who are in constant contact with one another.
- No vaccine is currently available therefore medical care professionals are treating the patient's symptoms. Investigations are ongoing to learn more.



Situation Overview

- *The Centers for Disease Control and Prevention (CDC) considers the immediate risk of 2019-nCoV infection to the American public to be low based on available information.*
- The CDC and Customs and Border Protection (CBP) are the lead agencies with LA County Health as the agency of authority if someone is transported to a local hospital or requires follow up.
- LAWA serves in a support role by providing our partners with screening rooms, badges, operational guidance, and coordination.
- *The CDC has confirmed two cases of nCOV in Southern California.*





Total Confirmed

45,206

Confirmed Cases by Country/Region

- 44,687 Mainland China
- 175 Others
- 50 Hong Kong
- 47 Singapore
- 33 Thailand
- 28 South Korea
- 28 Japan
- 18 Malaysia
- 18 Taiwan
- 16 Germany
- 15 Australia
- 15 Vietnam
- 13 US
- 11 France
- 10 Macau
- 8 United Arab Emirates
- 8 UK
- 7 Canada
- 3 Italy

Country/Region City, St/Prov

Last Updated at (M/D/YYYY)

2/12/2020, 9:03:03 AM



Visualization: JHU CSSE. Automation Support: [Esri Living Atlas team](#).
 Data sources: [WHO](#), [CDC](#), [ECDC](#), [NHC](#) and [DXY](#). Read more in this [blog](#). [Contact US](#).
 GitHub: [Here](#). Google Sheet: [Here](#). Time series table: [Here](#). Feature layer: [Here](#).
 Point level: City level - US, Canada and Australia; Province level - China; Country level - other countries.
 Time Zones: lower-left corner indicator - your local time; lower-right corner plot - UTC.

Total Deaths

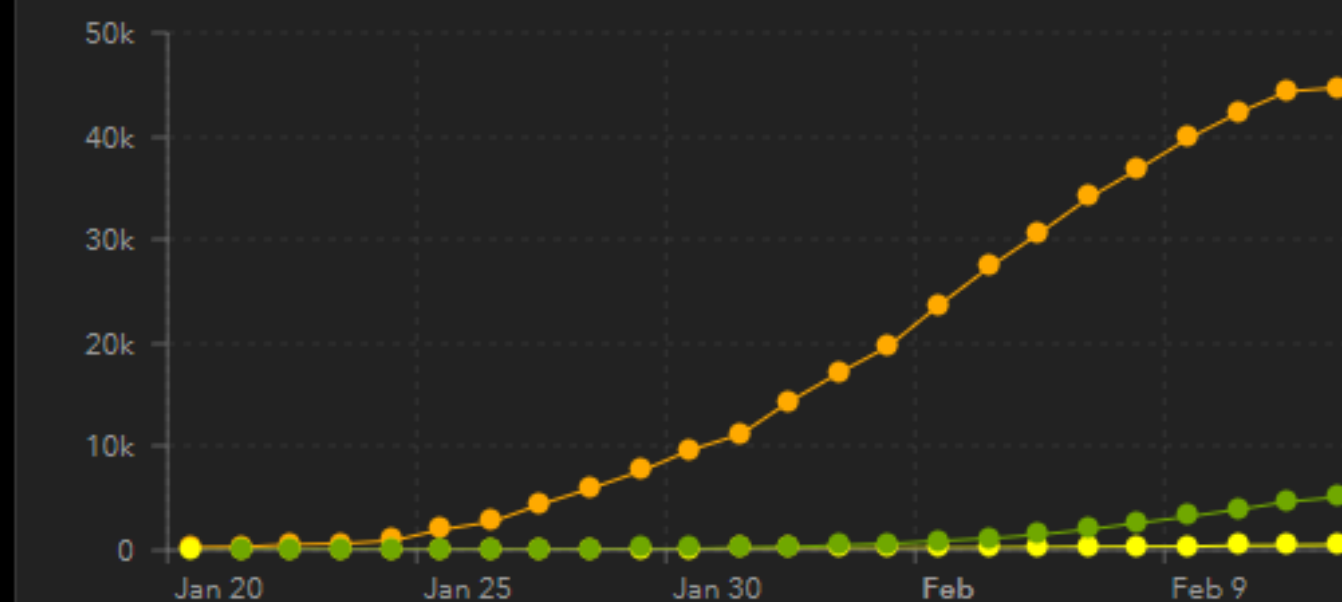
1,118

- 1,068 deaths **Hubei** Mainland China
- 1 deaths **Guangdong** Mainland China
- 8 deaths **Henan** Mainland China
- 2 deaths **Hunan** Mainland China
- 4 deaths **Anhui** Mainland China
- 1 deaths **Jiangxi** Mainland China
- 3 deaths **Chongqing** Mainland China
- 2 deaths **Shandong** Mainland China
- 1 deaths **Sichuan** Mainland China
- 8 deaths **Heilongjiang** Mainland China

Total Recovered

5,123

- 2,686 recovered **Hubei** Mainland China
- 321 recovered **Zhejiang** Mainland China
- 304 recovered **Hunan** Mainland China
- 275 recovered **Guangdong** Mainland China
- 246 recovered **Henan** Mainland China
- 152 recovered **Jiangxi** Mainland China
- 127 recovered **Anhui** Mainland China
- 125 recovered **Jiangsu** Mainland China
- 92 recovered **Shandong** Mainland China
- 92 recovered **Sichuan** Mainland China

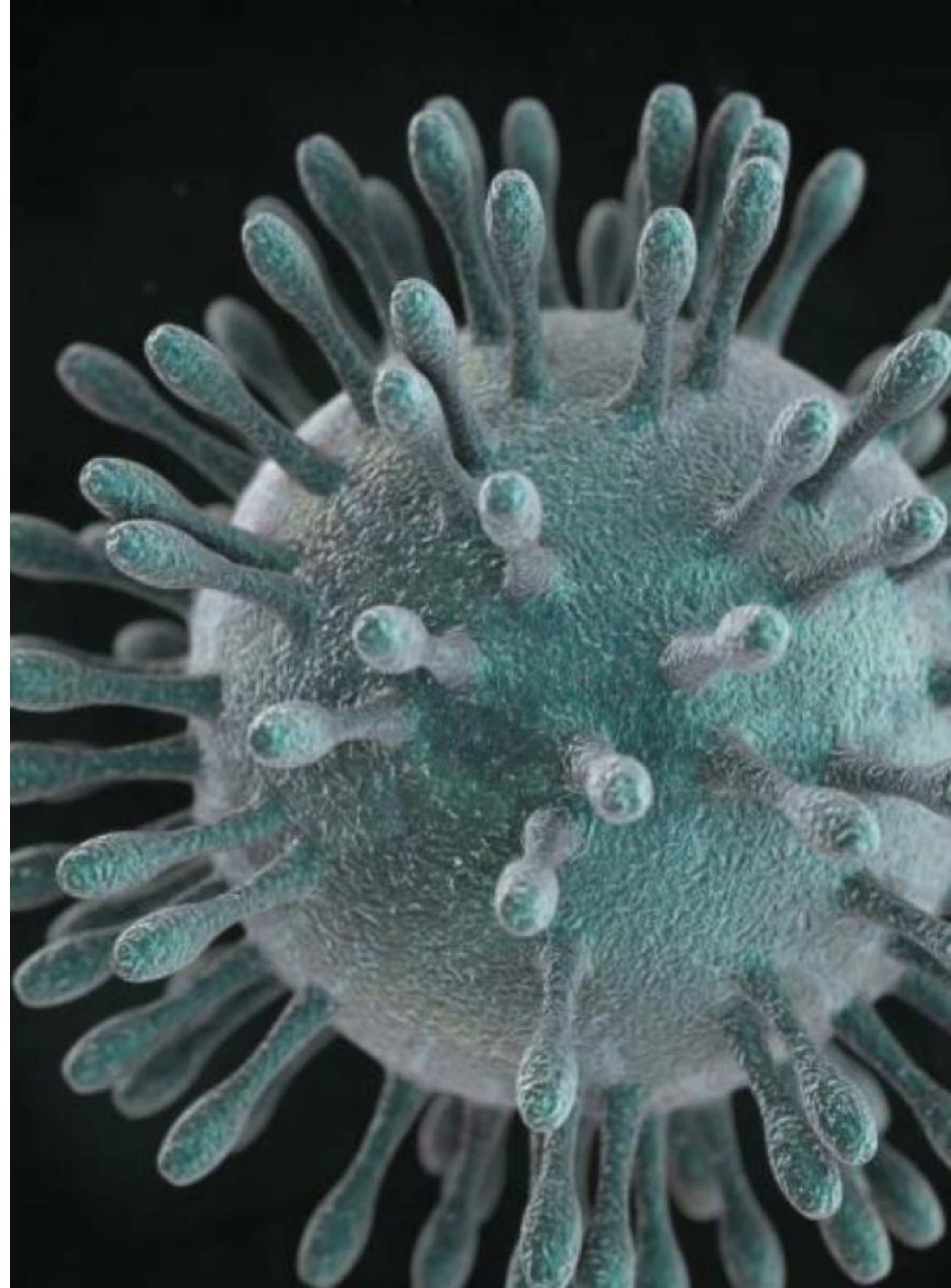


● Mainland China Confirmed
 ● Other Locations Confirmed
 ● Total Recovered

Actual Logarithmic

Screening Airports

- LAX
- Atlanta
- DFW
- Detroit
- Newark
- Honolulu
- JFK
- Chicago O'Hare
- Seattle
- SFO
- Washington Dulles



What is happening at LAX?

- LAX has been identified as a screening site because the airport receives over 22,000 passengers annually from Wuhan via indirect flights. CDC provides all passengers from China with an information card.
- Screening protocols have been defined under the jurisdiction of CDC with the assistance of Los Angeles County Department of Health Services (LACDHS)
- Screening at foreign airports:
 - Foreign Nationals in mainland China in past 14 days, cannot board flight to US
 - US Citizen with symptoms, cannot board flight to US
 - US Citizen in mainland China in past 14 days, must fly to 11 approved airports
- Screening at LAX:
 - Not been in Hubei Province in past 14 days and non-symptomatic: May leave LAX
 - Been in Hubei Province and non-symptomatic: Quarantined
 - Symptomatic: Hospitalized



HEALTH ALERT: *Travelers from China*

There is an outbreak of respiratory illness in China caused by a new coronavirus.

Watch your health for 14 days after leaving China

If you develop a fever, cough, or have difficulty breathing, seek medical care right away.

- CALL AHEAD BEFORE GOING TO SEE A DOCTOR OR EMERGENCY ROOM
- TELL THEM YOUR SYMPTOMS AND THAT YOU WERE IN CHINA
- GIVE THEM THIS CARD.

Triage Staff

- Use standard precautions
- Use eye protection
- Notify infection control department



健康预警：来自中国的旅客请注意

近期，在中国爆发了由新型冠状病毒所引起的呼吸系统疾病。

请在离开中国后的14天内密切关注您的身体健康。如果您出现发烧，咳嗽，或呼吸困难的症状，请立即与医生联系。

- 请在前往医生办公室或急诊室之前先电话咨询。
- 告知医生您的症状，并让医生知道您曾去过中国。
- 请把此卡片交给医生。

分诊人员/临床医生：

- 请采取标准预防，接触隔离，空气传播预防，以及眼部防护措施。
- 请立即通知传染病防控机构和您所在州/地方的卫生部门。



详细信息请参见：www.cdc.gov/nCoV

What is happening at LAX?

- Approximately 1,000 daily screenings
- More than 100 Media inquiries
 - Includes CNN, Washington Post, NY Times, Fox News, LA Times, Australia media
 - PR team working with PIOs of other agencies for virtual Joint Information Center (JIC)
 - PR team participating in calls with PIOs from other 10 screening airports to share best practices



LAWA Protective Measures

- Proactive outreach to staff, badge holders, and the public to inform them on the virus, what is happening at LAWA, and what they can do to protect themselves (which is consistent with common cold measures).
- Approximately 100 additional hand sanitizer machines and information posters have been placed throughout the terminals.
- GEMS have been provided FAQs to help address passenger inquiries.
- LA County Health is providing regular briefings to our badge holders.
- Out of extreme precaution, LAWA has ordered latex gloves, eye goggles, and N95 masks, should the CDC recommend we use these items.



LAX